



Texas Crop Progress and Condition

Southern Plains Regional Field Office
Post Office Box 70 Austin, Texas 78767
(800) 626-3142 · FAX (855) 270-2725 · www.nass.usda.gov/tx

Issue: TX-CW1318

Weekly Summary for May 14-May 20

Released: May 21, 2018

Weather conditions were mostly dry and warm through the early part of the week, however thunderstorms arrived late week, bringing much needed precipitation. Most of the state received between 0.2 and 1.5 inches of rain. Areas of South Central Texas, the Edwards Plateau, the Cross Timbers, the Upper Coast and Low Plains averaged between 2 and 3 inches of rain, with isolated areas getting upwards of 5 inches. However, the Trans-Pecos received little to no precipitation during the week. There were 6.2 days suitable for fieldwork.

Small Grains: Winter wheat in the Northern High Plains was being cut for hay or grazed. In some areas of the Northern Plains, producers are hoping to salvage enough of the wheat crop for use as next year's seed. Producers in the Blacklands and the Edwards Plateau had begun harvesting wheat, while wheat and oats harvest continued in South and South Central Texas.

Row Crops: Corn and cotton planting continued in the High Plains. Cotton was irrigated in the Upper Coast, South Texas and the Lower Valley. Wireworms became a concern in early emerged cotton and corn fields in the Southern High Plains. Corn and sorghum continued to progress in the Blacklands. Corn in South Central Texas was starting to tassel, but was also showing signs of stress due to lack of moisture.

Fruit, Vegetable and Specialty Crops: Peach and pecan crops were still not fully recovered from late frost in the Cross Timbers. Pecan producers in the Cross Timbers and the Trans-Pecos were applying insecticide to control pecan nut casebearer. Onion, red potato and chipper potato harvests continued in South Texas. Sugarcane harvest concluded in the Lower Valley.

Livestock, Range and Pasture: The Mallard fire in the Northern High Plains was completely contained after two weeks. Several head of cattle were lost along with damage to fences and rangeland. Cattle condition was mostly rated fair to good across the state. Cattle producers continued to provide supplemental feed in the Northern Plains, the Edwards Plateau, South Texas and the Lower Valley. Horn flies and ear ticks started causing problems to the livestock in the Blacklands. Pasture and range condition was mostly rated fair to good.

 <p>2017 CENSUS OF AGRICULTURE YOUR VOICE. YOUR FUTURE. YOUR OPPORTUNITY.</p>  <p>United States Department of Agriculture National Agricultural Statistics Service</p>		<p>Last Chance to Be Counted. Respond Today!</p> <p>Respond Online. www.agcounts.usda.gov</p> <p>For assistance completing the census, call toll-free (888) 424-7828.</p> <p>www.agcensus.usda.gov</p>
--	---	---

Crop Progress

Stage	Percent of Acreage			
	Current Week	Previous Week	Previous Year	5 Year Average
Corn				
Planted	88	82	86	84
Emerged	81	70	75	73
Silked	24	18	19	15
Cotton				
Planted	43	28	39	33
Squaring	8	2	8	5
Peanuts				
Planted	60	35	56	44
Rice				
Planted	99	90	86	92
Emerged	87	82	83	86
Sorghum				
Planted	90	85	81	76
Headed	20	15	32	20
Soybeans				
Planted	75	64	83	71
Emerged	63	50	71	56
Sunflowers				
Planted	34	25	50	45
Winter Wheat				
Headed	93	81	97	91
Harvested	12	7	18	7
Oats				
Harvested	30	10	39	16

Crop Condition

Crop	Percent of Acreage					Index ¹	
	Excellent	Good	Fair	Poor	Very Poor	2018	2017
Corn	4	55	35	5	1	76	81
Rice	7	43	49	1	0	76	82
Sorghum	2	33	24	36	5	56	81
Wheat	2	14	22	29	33	37	65
Oats	3	27	38	14	18	55	65
Range and Pasture	5	25	39	21	10	--	--

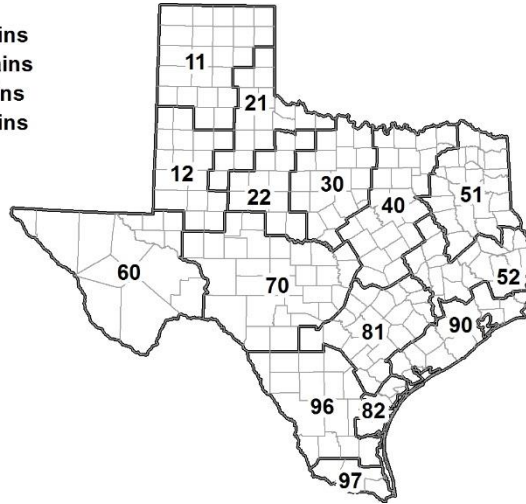
¹ The formula for the condition index is $I = (5V + 25P + 60F + 90G + 110E)/100$ where I = crop condition index and V, P, F, G, E = percentage of crop rated very poor, poor, fair, good, excellent.

Soil Moisture and Days Suitable by District

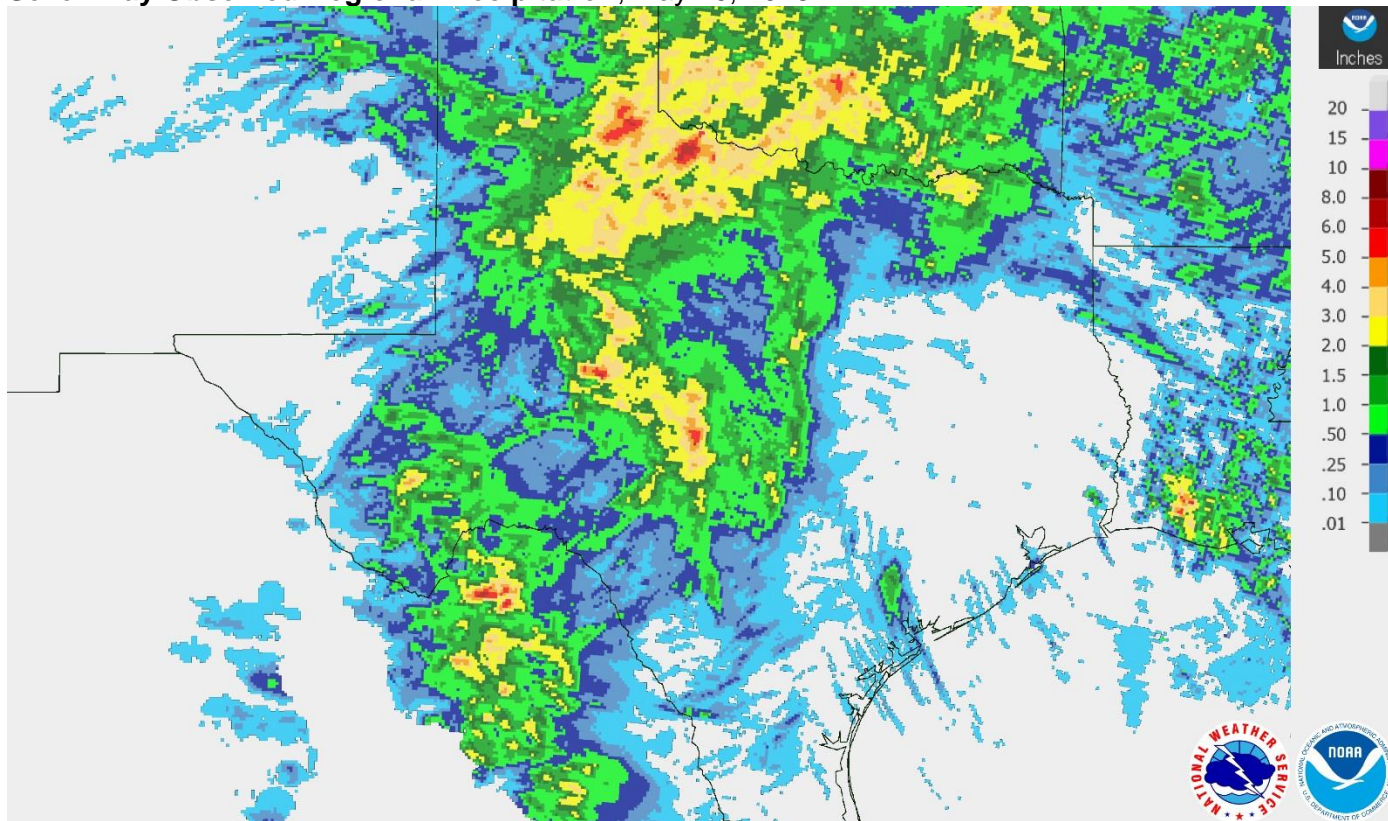
District	Topsoil Moisture Condition by District				Subsoil Moisture Condition by District				Days Suitable for Fieldwork
	Percentage of Acreage				Percentage of Acreage				
	Very Short	Short	Adequate	Surplus	Very Short	Short	Adequate	Surplus	
11	55	24	21	0	39	41	20	0	6.5
12	67	18	14	1	65	25	9	1	6.5
21	15	45	40	0	27	57	16	0	5.7
22	2	46	49	3	5	58	35	2	4.9
30	5	30	56	9	7	35	54	4	5.7
40	5	22	70	3	4	29	65	2	6.2
51	2	44	51	3	3	43	51	3	6.9
52	3	39	58	0	3	40	57	0	6.2
60	67	1	32	0	30	38	32	0	6.8
70	14	30	55	1	19	30	50	1	4.8
81	4	53	43	0	1	55	44	0	6.7
82	49	37	14	0	14	60	26	0	6.5
90	23	57	20	0	10	41	49	0	6.8
96	23	39	38	0	21	37	42	0	6.7
97	73	25	2	0	26	66	8	0	7.0
State	32	31	36	1	26	40	33	1	6.2

Texas Agricultural Districts

- 11 Northern High Plains
- 12 Southern High Plains
- 21 Northern Low Plains
- 22 Southern Low Plains
- 30 Cross Timbers
- 40 Blacklands
- 51 North East
- 52 South East
- 60 Trans-Pecos
- 70 Edwards Plateau
- 81 South Central
- 82 Coastal Bend
- 90 Upper Coast
- 96 South
- 97 Lower Valley

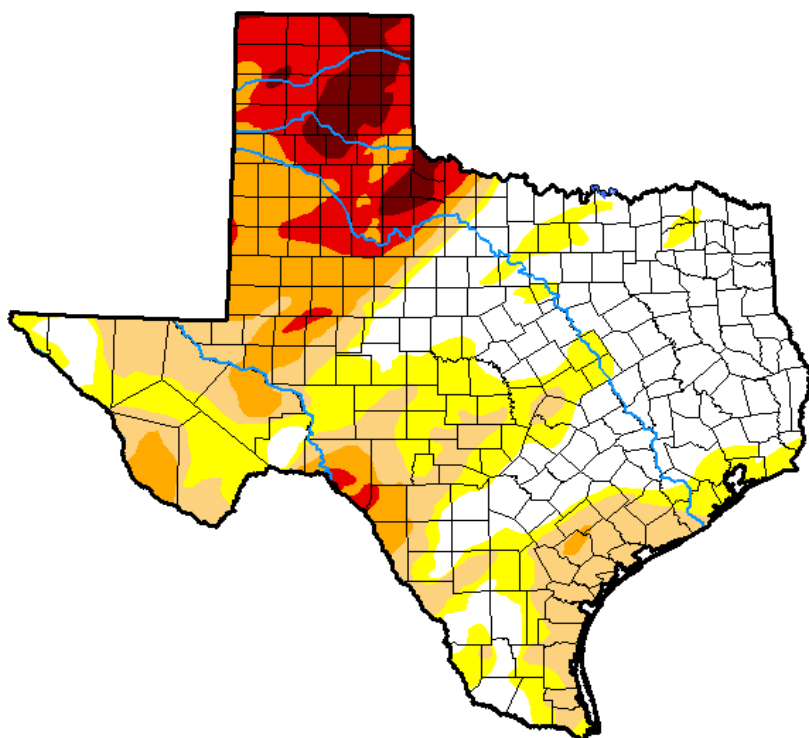


Seven Day Observed Regional Precipitation, May 20, 2018.



Source: National Weather Service, www.nws.noaa.gov.

Drought Monitor, Valid May 15, 2018.



Drought Conditions (Percent Area)

	None	D0-D4	D1-D4	D2-D4	D3-D4	D4
Current	36.32	63.68	43.39	25.33	12.98	4.02
Last Week 05-08-2018	39.78	60.22	38.80	22.30	12.97	4.61
3 Months Ago 02-13-2018	10.26	89.74	71.22	37.56	13.07	0.00
Start of Calendar Year 01-02-2018	33.37	66.63	33.56	5.94	0.11	0.00
Start of Water Year 09-26-2017	70.54	29.46	4.17	0.04	0.00	0.00
One Year Ago 05-16-2017	65.58	34.42	6.15	1.20	0.00	0.00

Intensity:

- D0 Abnormally Dry
- D1 Moderate Drought
- D2 Severe Drought
- D3 Extreme Drought
- D4 Exceptional Drought

The Drought Monitor focuses on broad-scale conditions. Local conditions may vary. See accompanying text summary for forecast statements.

Author:

Eric Luebehusen
U.S. Department of Agriculture



Source: National Drought Mitigation Center, a partnership with USDA, U.S. Department of Commerce/NOAA, <http://droughtmonitor.unl.edu>.

Texas Crop Progress and Condition (21 May 2018)

USDA, National Agricultural Statistics Service, Southern Plains Regional Field Office