



# Texas Crop Progress and Condition

Southern Plains Regional Field Office  
Post Office Box 70 Austin, Texas 78767  
(800) 626-3142 · FAX (855) 270-2725 · www.nass.usda.gov/tx

**Issue: TX-CW1418**

**Weekly Summary for May 21-May 27**

**Released: May 29, 2018**

Triple digit temperatures were experienced in many areas of Texas last week. Areas of South East Texas, the Upper Coast, South central Texas and the Trans-Pecos, recorded from trace amounts of precipitation with isolated areas reporting up to 5 inches. However, most totals ranged from less than an inch up to 2.5 inches. Hail damage was reported in isolated areas in the Northern High Plains. There were 6.4 days suitable for fieldwork.

**Small Grains:** Winter wheat in the Northern Plains was in need of additional moisture. Wheat harvest was getting underway in the Southern Low Plains, the Cross Timbers and the Blacklands. Meanwhile harvest continued to progress in East Texas, the Edwards Plateau, and South Texas. Oats harvest was in full swing in the Blacklands.

**Row Crops:** Cotton planting was ongoing in the Northern Plains. Cotton was emerging in the Blacklands and starting to square in South Texas. Cotton, corn and sorghum were showing signs of drought stress in the Upper Coast. Corn in the Blacklands was entering the silking stage. Peanut planting continued in South Texas.

**Fruit, Vegetable and Specialty Crops:** Peas and melons were making good progress, while-vegetable crops, blackberries, blueberries, and peaches were being harvested in North East Texas. Pecan trees were irrigated in the Trans-Pecos. Producers in South Texas and North East Texas were harvesting onions. Vegetable and watermelon harvest continued in the Lower Valley.

**Livestock, Range and Pasture:** Livestock conditions were rated mostly good to fair across the state. Supplemental feeding was decreasing in the Northern Plains, but increased in South Texas. Pasture and range condition was mostly rated fair to good. High risk of fire persisted in the Trans-Pecos.

**Crop Progress**

Stage	Percent of Acreage			
	Current Week	Previous Week	Previous Year	5 Year Average
<b>Corn</b>				
Planted	90	88	95	91
Emerged	83	81	85	81
Silked	29	24	29	24
<b>Cotton</b>				
Planted	51	43	51	47
Squaring	11	8	11	6
<b>Peanuts</b>				
Planted	70	60	70	65
<b>Rice</b>				
Emerged	89	87	86	90
<b>Sorghum</b>				
Planted	92	90	86	79
Headed	30	20	38	27
<b>Soybeans</b>				
Planted	80	75	88	77
Emerged	66	63	77	63
Blooming	3	3		
<b>Sunflowers</b>				
Planted	37	34	N/A	N/A
<b>Winter Wheat</b>				
Headed	94	93	100	95
Harvested	20	12	22	13
<b>Oats</b>				
Harvested	40	30	47	25

(NA) Not available.

### Crop Condition

Crop	Percent of Acreage					Index <sup>1</sup>	
	Excellent	Good	Fair	Poor	Very Poor	2018	2017
Corn	4	53	31	7	5	73	81
Rice	21	60	15	4	0	87	82
Sorghum	1	20	30	36	13	47	81
Soybeans	5	28	48	14	5	63	N/A
Wheat	2	16	28	27	27	42	65
Oats	9	43	30	13	5	70	65
Range and Pasture	2	25	42	22	9	--	--

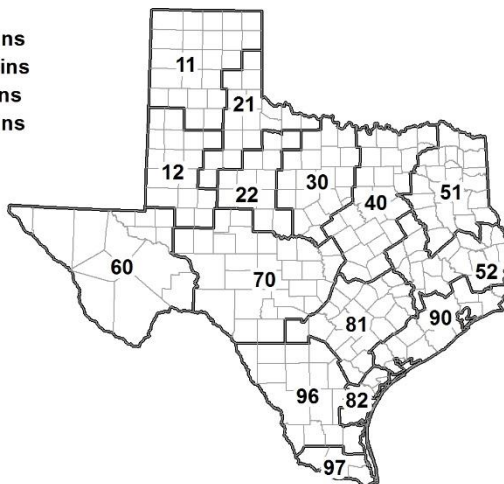
<sup>1</sup> The formula for the condition index is  $I = (5V + 25P + 60F + 90G + 110E)/100$  where I = crop condition index and V, P, F, G, E = percentage of crop rated very poor, poor, fair, good, excellent. (N/A) Not available.

### Soil Moisture and Days Suitable by District

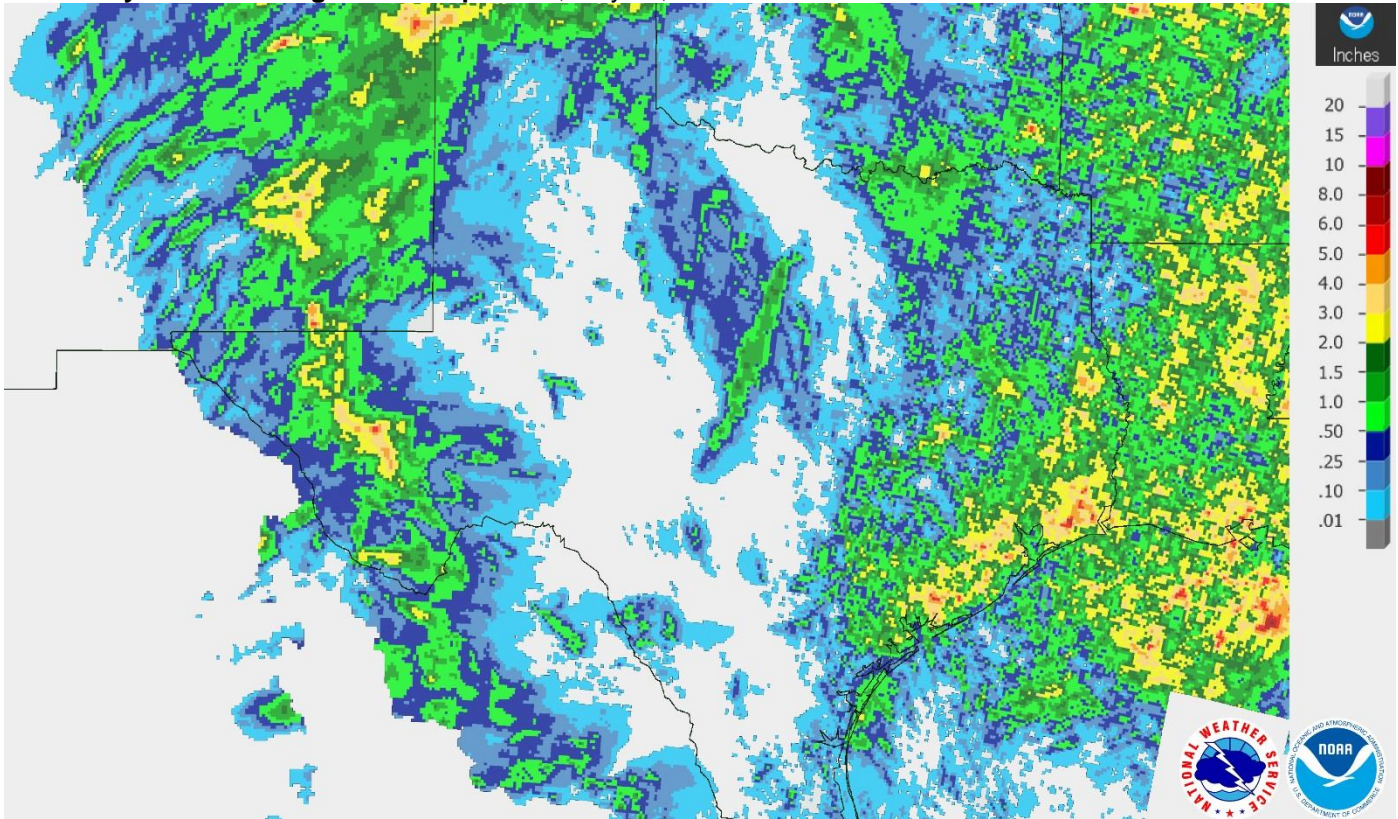
District	Topsoil Moisture Condition by District				Subsoil Moisture Condition by District				Days Suitable for Fieldwork
	Percentage of Acreage				Percentage of Acreage				
	Very Short	Short	Adequate	Surplus	Very Short	Short	Adequate	Surplus	
11	29	27	44	0	22	44	34	0	6.6
12	73	27	0	0	74	21	5	0	7.0
21	7	40	49	4	7	49	44	0	6.0
22	8	58	31	3	5	54	41	0	6.2
30	4	39	51	6	5	41	50	4	5.8
40	15	22	61	2	16	21	63	0	6.1
51	13	43	42	2	13	45	40	2	6.6
52	11	45	44	0	7	40	53	0	6.3
60	64	5	31	0	31	38	31	0	6.7
70	11	53	35	1	15	31	53	1	6.7
81	6	59	33	2	1	61	36	2	6.0
82	0	0	100	0	30	50	20	0	7.0
90	8	27	60	5	8	33	59	0	5.4
96	23	52	25	0	19	54	27	0	6.8
97	90	10	0	0	0	100	0	0	7.0
State	28	33	37	2	24	40	36	0	6.4

### Texas Agricultural Districts

- 11 Northern High Plains
- 12 Southern High Plains
- 21 Northern Low Plains
- 22 Southern Low Plains
- 30 Cross Timbers
- 40 Blacklands
- 51 North East
- 52 South East
- 60 Trans-Pecos
- 70 Edwards Plateau
- 81 South Central
- 82 Coastal Bend
- 90 Upper Coast
- 96 South
- 97 Lower Valley

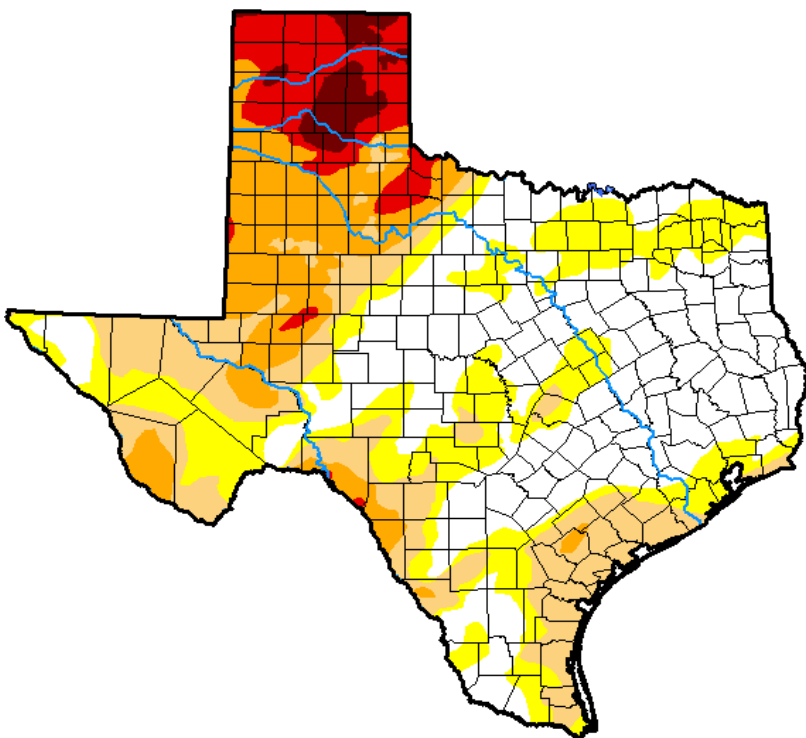


**Seven Day Observed Regional Precipitation, May 28, 2018.**



Source: National Weather Service, [www.nws.noaa.gov](http://www.nws.noaa.gov).

**Drought Monitor, Valid May 22, 2018.**



*Drought Conditions (Percent Area)*

	None	D0-D4	D1-D4	D2-D4	D3-D4	D4
<b>Current</b>	37.32	62.68	40.53	22.46	9.20	2.54
<b>Last Week</b> <i>05-15-2018</i>	36.32	63.68	43.39	25.33	12.98	4.02
<b>3 Months Ago</b> <i>02-20-2018</i>	11.90	88.10	70.76	37.56	11.13	0.00
<b>Start of Calendar Year</b> <i>01-02-2018</i>	33.37	66.63	33.56	5.94	0.11	0.00
<b>Start of Water Year</b> <i>09-26-2017</i>	70.54	29.46	4.17	0.04	0.00	0.00
<b>One Year Ago</b> <i>05-23-2017</i>	77.70	22.30	2.41	0.19	0.00	0.00

Intensity:

- D0 Abnormally Dry
- D1 Moderate Drought
- D2 Severe Drought
- D3 Extreme Drought
- D4 Exceptional Drought

*The Drought Monitor focuses on broad-scale conditions. Local conditions may vary. See accompanying text summary for forecast statements.*

Author:

Eric Luebehusen  
U.S. Department of Agriculture



Source: National Drought Mitigation Center, a partnership with USDA, U.S. Department of Commerce/NOAA, <http://droughtmonitor.unl.edu>.

2017 CENSUS OF AGRICULTURE

YOUR VOICE. YOUR FUTURE. YOUR OPPORTUNITY.



United States Department of Agriculture  
National Agricultural Statistics Service



**Last Chance to Be Counted.  
Respond Today!**

Respond Online. [www.agcounts.usda.gov](http://www.agcounts.usda.gov)

*For assistance completing the census,  
call toll-free (888) 424-7828.*

[www.agcensus.usda.gov](http://www.agcensus.usda.gov)