



Texas Crop Progress and Condition

Southern Plains Regional Field Office
Post Office Box 70 Austin, Texas 78767
(800) 626-3142 · FAX (855) 270-2725 · www.nass.usda.gov/tx

Issue: TX-CW1518

Weekly Summary for May 28-June 3

Released: June 4, 2018

The week was mostly hot and dry across the state. Precipitation ranged from trace amounts to 1.5 inches in the Tans-Pecos, the Southern Plains and areas of the Upper Coast, South Central Texas and the Cross Timbers. Isolated areas received upwards of 2 inches of rain. No measurable rainfall was reported in the rest of the state. There were 6.7 days suitable for fieldwork.

Small Grains: Wheat harvest continued in the Low Plains, the Cross Timbers, the Blacklands and South Central Texas. Hot temperatures were rapidly ripening wheat in the Northern High Plains and the Edwards Plateau. Oats harvest was in full swing in the Blacklands.

Row Crops: Cotton planting was underway in the Plains. Producers were trying to get their cotton planted before the June 5 insurance deadline. However, without moisture, emergence of dryland cotton will be delayed in the High Plains. Cotton irrigation was active where available. Hot weather in the Upper Coast increased populations of spider mites and fleahoppers in cotton. Crops in the Blacklands, East Texas, South Central Texas and the Upper Coast were in need of moisture. Peanuts continued to be planted in South Texas. Sorghum made good progress in South Texas. Sorghum and Sunflower harvest was expected to start soon in the Lower Valley.

Fruit, Vegetable and Specialty Crops: Pecan trees in the Blacklands were making nutlets. Producers in North East Texas were harvesting fruits and vegetables. Onions were being harvested in South Texas and the Lower Valley. Watermelon harvest continued in the Lower Valley.

Livestock, Range and Pasture: Livestock conditions were rated mostly good to fair across the state. Use of supplemental feeding increased in South Texas and the Lower Valley. Pasture and range condition decreased from last week and was mostly rated fair to poor.

 <p>2017 CENSUS OF AGRICULTURE YOUR VOICE. YOUR FUTURE. YOUR OPPORTUNITY. USDA AGRICULTURE COUNTS United States Department of Agriculture National Agricultural Statistics Service</p>		<p>Last Chance to Be Counted. Respond Today!</p> <p>Respond Online. www.agcounts.usda.gov For assistance completing the census, call toll-free (888) 424-7828. www.agcensus.usda.gov</p>
---	---	---

Crop Condition

Crop	Percent of Acreage					Index ¹	
	Excellent	Good	Fair	Poor	Very Poor	2018	2017
Corn	1	45	40	7	7	68	82
Cotton	1	27	49	22	1	60	74
Peanuts	0	1	91	0	8	56	84
Rice	10	55	30	5	0	80	79
Sorghum	0	20	38	30	12	49	80
Soybeans	2	43	46	7	2	70	82
Wheat	2	14	26	28	30	39	64
Oats	5	43	30	9	13	65	65
Range and Pasture	2	20	41	25	12	--	--

¹ The formula for the condition index is $I = (5V + 25P + 60F + 90G + 110E)/100$ where I = crop condition index and V, P, F, G, E = percentage of crop rated very poor, poor, fair, good, excellent.

Crop Progress

Stage	Percent of Acreage			
	Current Week	Previous Week	Previous Year	5 Year Average
Corn				
Planted	96	90	98	95
Emerged	91	83	89	90
Silked	39	29	37	34
Cotton				
Planted	70	51	70	67
Squaring	12	11	13	8
Peanuts				
Planted	90	70	88	85
Rice				
Emerged	95	89	98	95
Headed	1	N/A	N/A	N/A
Sorghum				
Planted	95	92	91	83
Headed	41	30	43	33
Coloring	8	N/A	11	9
Soybeans				
Planted	85	80	92	85
Emerged	73	66	79	72
Blooming	6	3	4	3
Sunflowers				
Planted	57	37	64	73
Winter Wheat				
Headed	96	94	100	98
Harvested	35	20	53	24
Oats				
Harvested	55	40	74	39

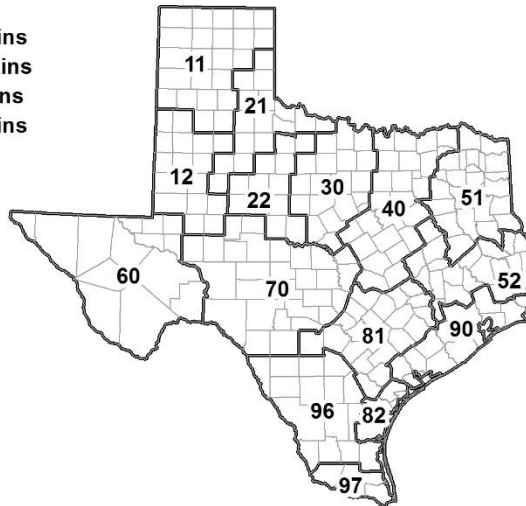
(N/A) Not available

Soil Moisture and Days Suitable by District

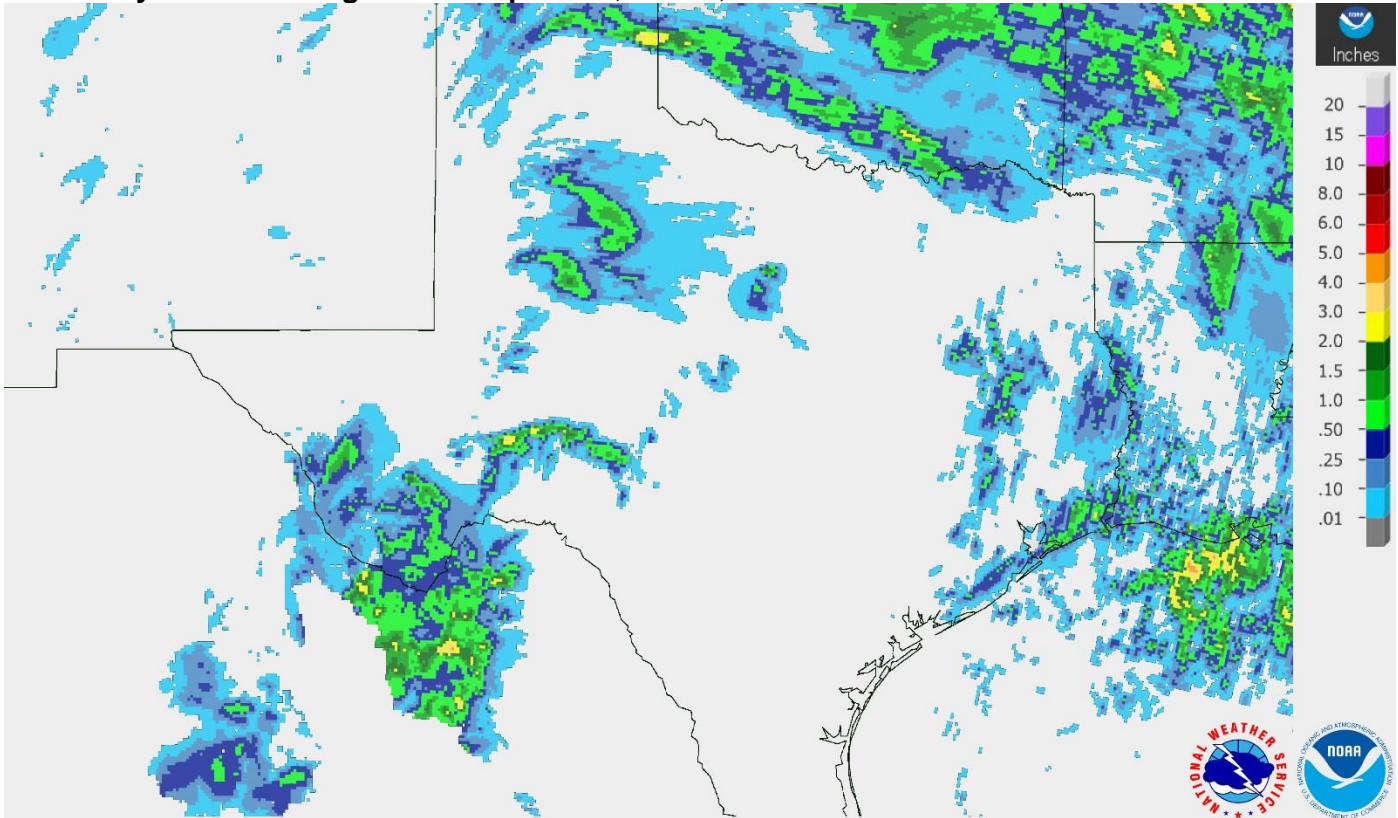
District	Topsoil Moisture Condition by District				Subsoil Moisture Condition by District				Days Suitable for Fieldwork
	Percentage of Acreage				Percentage of Acreage				
	Very Short	Short	Adequate	Surplus	Very Short	Short	Adequate	Surplus	
11	28	39	33	0	24	48	28	0	6.5
12	70	24	3	3	71	19	8	2	6.4
21	15	66	19	0	12	60	28	0	6.8
22	2	64	33	1	2	54	44	0	6.7
30	15	60	25	0	10	52	38	0	6.1
40	29	37	24	10	18	42	39	1	6.9
51	22	45	33	0	25	40	34	1	6.9
52	6	37	52	5	6	35	54	5	6.6
60	61	8	31	0	31	38	31	0	6.7
70	25	53	21	1	24	34	41	1	6.8
81	15	78	7	0	6	79	15	0	6.8
82	0	100	0	0	40	60	0	0	7.0
90	32	38	30	0	8	35	57	0	6.7
96	41	47	12	0	44	42	14	0	6.8
97	85	13	2	0	26	66	8	0	7.0
State	33	44	21	2	27	44	28	1	6.7

Texas Agricultural Districts

- 11 Northern High Plains
- 12 Southern High Plains
- 21 Northern Low Plains
- 22 Southern Low Plains
- 30 Cross Timbers
- 40 Blacklands
- 51 North East
- 52 South East
- 60 Trans-Pecos
- 70 Edwards Plateau
- 81 South Central
- 82 Coastal Bend
- 90 Upper Coast
- 96 South
- 97 Lower Valley

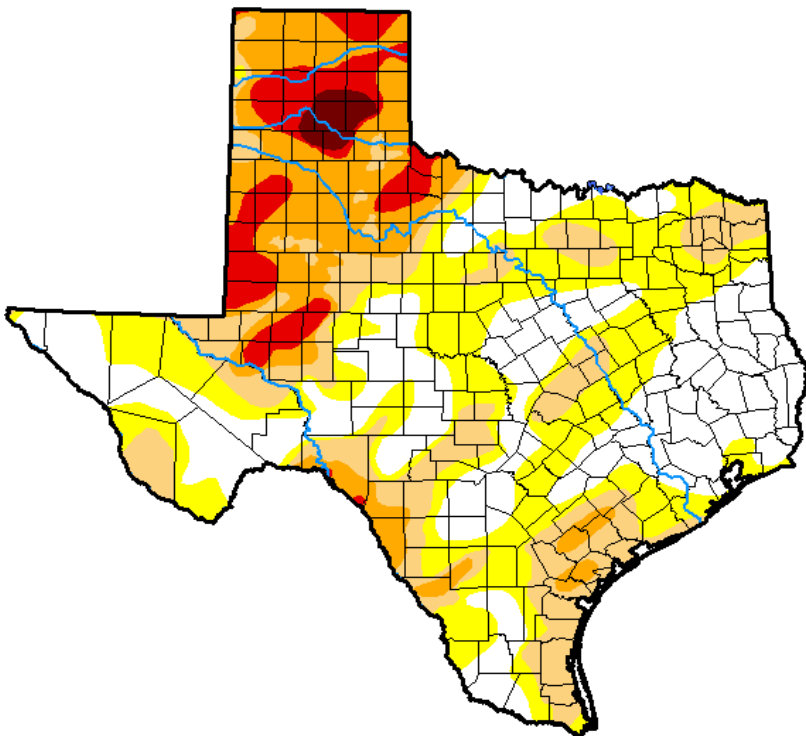


Seven Day Observed Regional Precipitation, June 3, 2018.



Source: National Weather Service, www.nws.noaa.gov.

Drought Monitor, Valid May 29, 2018.



Drought Conditions (Percent Area)

	None	D0-D4	D1-D4	D2-D4	D3-D4	D4
Current	31.26	68.74	40.06	21.93	7.82	1.17
Last Week <i>05-22-2018</i>	37.32	62.68	40.53	22.46	9.20	2.54
3 Months Ago <i>02-27-2018</i>	22.75	77.25	55.19	22.04	11.47	0.00
Start of Calendar Year <i>01-02-2018</i>	33.37	66.63	33.56	5.94	0.11	0.00
Start of Water Year <i>09-26-2017</i>	70.54	29.46	4.17	0.04	0.00	0.00
One Year Ago <i>05-30-2017</i>	65.50	34.50	3.70	0.00	0.00	0.00

Intensity:

- D0 Abnormally Dry
- D1 Moderate Drought
- D2 Severe Drought
- D3 Extreme Drought
- D4 Exceptional Drought

The Drought Monitor focuses on broad-scale conditions. Local conditions may vary. See accompanying text summary for forecast statements.

Author:

Anthony Artusa
NOAA/NWS/NCEP/CPC



Source: National Drought Mitigation Center, a partnership with USDA, U.S. Department of Commerce/NOAA, <http://droughtmonitor.unl.edu>.