



United States Department of Agriculture  
National Agricultural Statistics Service



# Texas Crop Progress and Condition

Southern Plains Regional Field Office  
Post Office Box 70 Austin, Texas 78767  
(800) 626-3142 · FAX (855) 270-2725 · [www.nass.usda.gov/tx](http://www.nass.usda.gov/tx)

Issue: TX-CW1618

Weekly Summary for June 4-June 10

Released: June 11, 2018

Hot, dry weather prevailed across much of the state last week with a few areas receiving timely rains. The Low Plains, the Cross Timbers, the Blacklands, and East Texas received precipitation ranging between 0.5 and 2.0 inches, with isolated areas getting upwards of 6 inches. There were 6.4 days suitable for fieldwork.

**Small Grains:** Winter wheat in the Northern High Plains ripened quickly. Wheat producers in the Northern Plains were expecting harvest to begin soon. Wheat harvest was winding down in the Cross Timbers and the Blacklands.

**Row Crops:** Hail and high winds damaged young cotton plants in the Edwards Plateau. Cotton was blooming in the Upper Coast. Corn in the Edwards Plateau was tasseling, while approaching maturity in South Texas. Corn and sorghum were in need of moisture in the Blacklands, North East Texas, South Central Texas and the Upper Coast. Dryland sorghum planting had begun in the Northern High Plains. Sorghum harvest was underway in the Lower Valley, but sunflower harvest was winding down. Planting of peanuts continued in South Texas.

**Fruit, Vegetable and Specialty Crops:** Melons in the Southern High Plains were struggling, while melons in South Texas were making progress. Melon harvest in the Lower Valley was winding down. Fruits and vegetables were being harvested in North East Texas. Citrus harvest has been completed for the season.

**Livestock, Range and Pasture:** Livestock conditions were rated mostly good to fair across the state. Supplemental feeding continued in the Northern Low Plains, South Texas, and the Lower Valley. Increased insect populations were reported in the Blacklands and North East Texas. Livestock water sources were getting critically low in areas of the Southern Low Plains and the Edwards Plateau. Pasture and range condition was mostly rated fair to poor.



**2017 CENSUS OF AGRICULTURE**  
YOUR VOICE. YOUR FUTURE. YOUR OPPORTUNITY.

USDA AGRICULTURE COUNTS

United States Department of Agriculture  
National Agricultural Statistics Service

**Last Chance to Be Counted.  
Respond Today!**

Respond Online. [www.agcounts.usda.gov](http://www.agcounts.usda.gov)

For assistance completing the census,  
call toll-free (888) 424-7828.

[www.agcensus.usda.gov](http://www.agcensus.usda.gov)

### Crop Condition

Crop	Percent of Acreage					Index <sup>1</sup>	
	Excellent	Good	Fair	Poor	Very Poor	2018	2017
Corn	1	45	35	10	9	66	84
Cotton	0	26	43	27	4	56	79
Peanuts	1	10	82	1	6	60	84
Rice	7	50	35	5	3	75	82
Sorghum	1	23	39	25	12	52	81
Soybeans	2	42	44	8	4	69	83
Wheat	2	13	24	27	34	37	66
Oats	7	43	29	8	13	66	68
Range and Pasture	2	16	39	29	14	--	--

<sup>1</sup> The formula for the condition index is  $I = (5V + 25P + 60F + 90G + 110E)/100$  where I = crop condition index and V, P, F, G, E = percentage of crop rated very poor, poor, fair, good, excellent.

### Crop Progress

Stage	Percent of Acreage			
	Current Week	Previous Week	Previous Year	5 Year Average
<b>Corn</b>				
Emerged	95	91	95	95
Silked	50	39	50	45
<b>Cotton</b>				
Planted	88	70	87	84
Squaring	14	12	14	10
Setting Bolls	2	N/A	3	2
<b>Peanuts</b>				
Planted	93	90	94	92
<b>Rice</b>				
Headed	5	1	1	2
<b>Sorghum</b>				
Headed	50	41	48	39
Coloring	20	8	23	16
<b>Soybeans</b>				
Planted	90	85	95	90
Emerged	75	73	85	84
Blooming	14	6	18	11
<b>Sunflowers</b>				
Planted	70	57	69	81
<b>Winter Wheat</b>				
Harvested	58	35	70	40
<b>Oats</b>				
Harvested	74	55	81	55

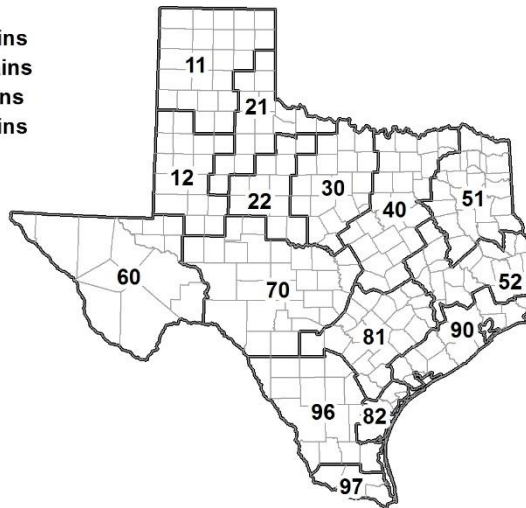
(N/A) Not available.

### Soil Moisture and Days Suitable by District

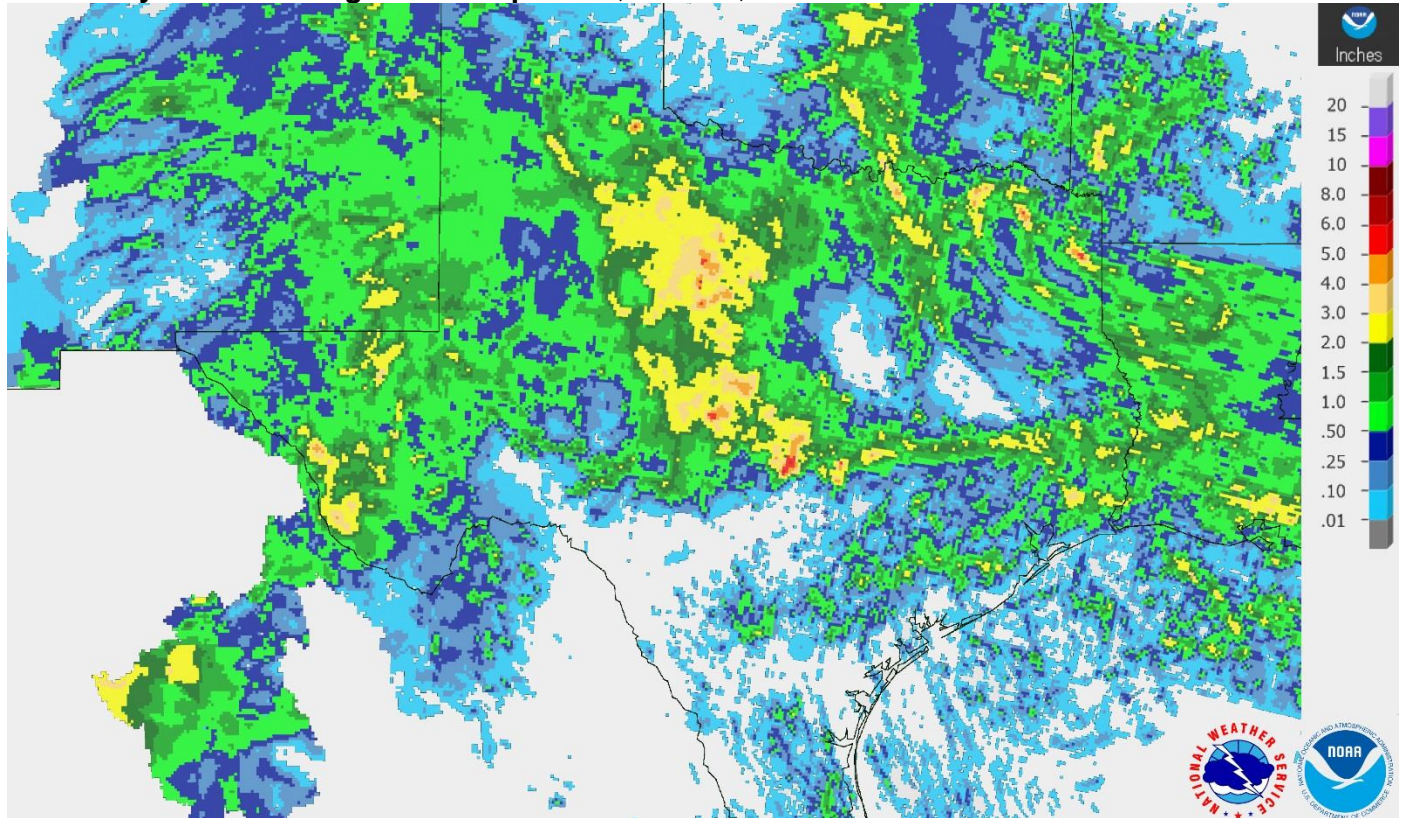
District	Topsoil Moisture Condition by District				Subsoil Moisture Condition by District				Days Suitable for Fieldwork
	Percentage of Acreage				Percentage of Acreage				
	Very Short	Short	Adequate	Surplus	Very Short	Short	Adequate	Surplus	
11	32	51	17	0	34	47	19	0	7.0
12	65	22	8	5	66	21	12	1	6.4
21	12	52	35	1	10	61	29	0	6.7
22	13	34	46	7	11	45	42	2	5.0
30	11	58	29	2	7	56	36	1	5.8
40	36	26	38	0	24	33	43	0	5.8
51	22	42	35	1	22	41	36	1	6.7
52	8	50	41	1	7	48	45	0	6.4
60	48	1	51	0	43	6	51	0	6.6
70	27	57	16	0	29	28	43	0	6.2
81	34	61	5	0	25	65	10	0	6.7
82	91	8	1	0	66	33	1	0	7.0
90	73	22	5	0	22	47	31	0	7.0
96	58	40	2	0	60	37	3	0	7.0
97	87	11	2	0	87	11	2	0	7.0
State	39	38	21	2	35	40	25	0	6.4

### Texas Agricultural Districts

- 11 Northern High Plains
- 12 Southern High Plains
- 21 Northern Low Plains
- 22 Southern Low Plains
- 30 Cross Timbers
- 40 Blacklands
- 51 North East
- 52 South East
- 60 Trans-Pecos
- 70 Edwards Plateau
- 81 South Central
- 82 Coastal Bend
- 90 Upper Coast
- 96 South
- 97 Lower Valley

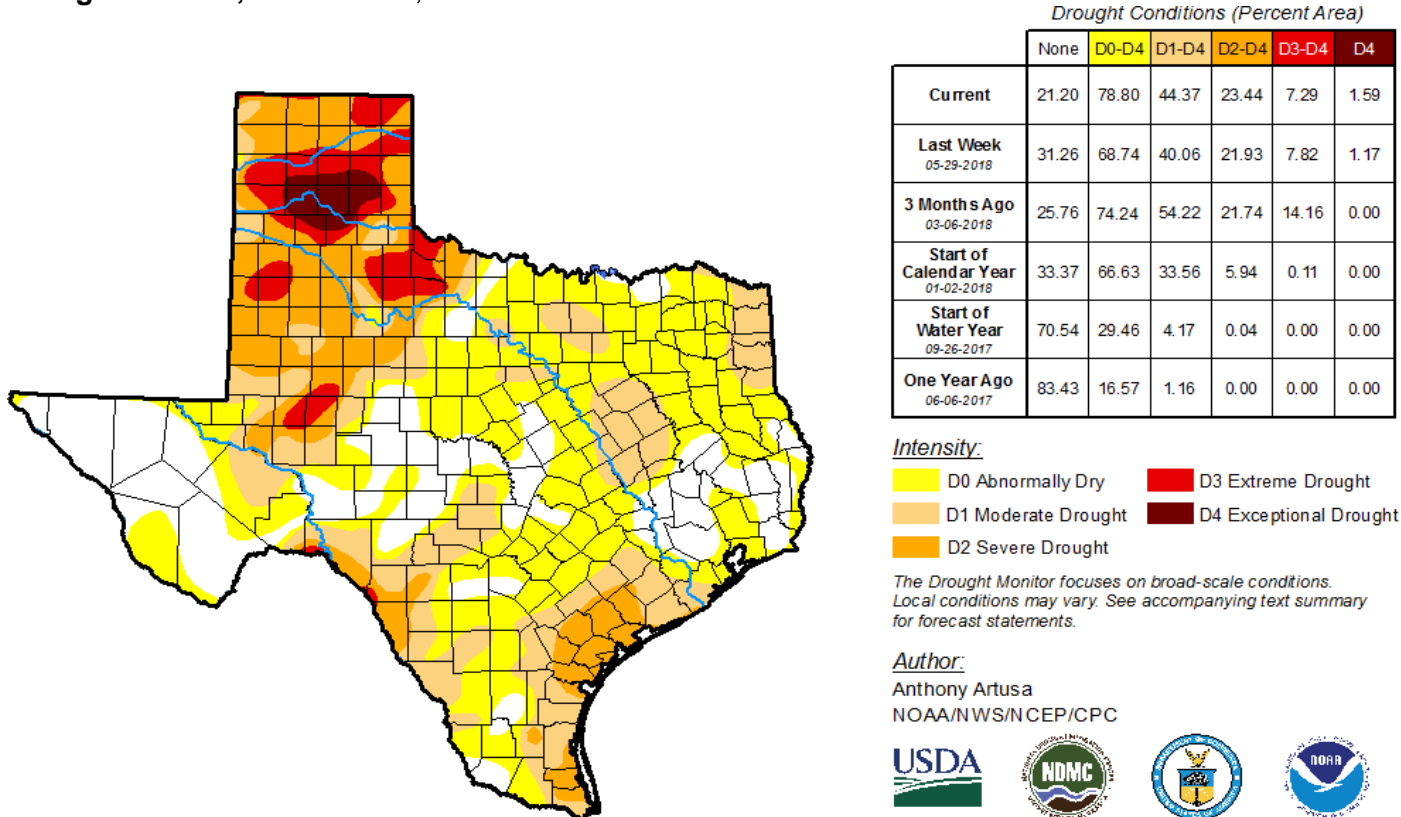


**Seven Day Observed Regional Precipitation, June 10, 2018.**



Source: National Weather Service, [www.nws.noaa.gov](http://www.nws.noaa.gov).

**Drought Monitor, Valid June 5, 2018.**



Source: National Drought Mitigation Center, a partnership with USDA, U.S. Department of Commerce/NOAA, <http://droughtmonitor.unl.edu>.