



# Texas Crop Progress and Condition

Southern Plains Regional Field Office  
Post Office Box 70 Austin, Texas 78767  
(800) 626-3142 · FAX (855) 270-2725 · www.nass.usda.gov/tx

Issue: TX-CW1718

Weekly Summary for June 11 - 17

Released: June 18, 2018

Hot, dry and windy conditions prevailed across much of the state last week. The precipitation was mostly reported in areas of the Trans-Pecos, the Plains and the Upper Coast, ranging from 0.5 to 2 inches of rain, with isolated areas in the Trans-Pecos getting upwards of 3.6 inches. There were 6.6 days suitable for fieldwork.

**Small Grains:** Winter wheat harvest started in the Northern High Plains, continued in the Low Plains and was winding down in the Blacklands. Wheat and oats harvest in the Edwards Plateau, South Texas and the Lower Valley has been completed.

**Row Crops:** Cotton was making good progress in the Northern Low Plains. In some areas of the Southern High Plains dryland cotton had not emerged due to the lack of moisture. Producers continued to plant cotton in the Southern Low Plains. Cotton in South Texas was in the squaring stage. Irrigation for cotton was very active in the Lower Valley and the Trans-Pecos. Dry conditions continued to affect both cotton and corn in the Blacklands. Windy conditions damaged corn fields in South East Texas. Sorghum and sunflowers were being planted in the Northern High Plains. Sorghum harvest was ongoing in the Coastal Bend and the Lower Valley.

**Fruit, Vegetable and Specialty Crops:** Peaches were being harvested in the Cross Timbers. Pecan scab ranged from light to moderate in North East Texas, but so far no aphids have been reported. Producers in North East Texas continued harvesting fruits and vegetables. Potato harvest was winding down in South Texas.

**Livestock, Range and Pasture:** Livestock conditions remained mostly good to fair across the state. Use of supplemental feeding increased in the Upper Coast, South Texas, and the Lower Valley. Pasture and range condition was rated 68 percent fair to good.

## Crop Progress

Stage	Percent of Acreage			
	Current Week	Previous Week	Previous Year	5 Year Average
<b>Corn</b>				
Silked	52	50	53	48
Dough	17	N/A	15	15
Dented	5	N/A	3	4
<b>Cotton</b>				
Planted	95	88	91	92
Squaring	18	14	17	13
Setting Bolls	8	2	6	4
<b>Peanuts</b>				
Planted	96	93	98	96
Pegging			1	3
<b>Rice</b>				
Headed	14	5	9	7
<b>Sorghum</b>				
Headed	55	50	52	45
Coloring	29	20	31	25
Mature	10	N/A	6	6
<b>Soybeans</b>				
Planted	95	90	99	93
Emerged	86	75	89	88
Blooming	25	14	39	21
<b>Sunflowers</b>				
Planted	80	70	79	87
Harvested	18	N/A	28	22
<b>Winter Wheat</b>				
Harvested	65	58	74	55
<b>Oats</b>				
Harvested	78	74	84	73

(N/A) Not available.

### Crop Condition

Crop	Percent of Acreage					Index <sup>1</sup>	
	Excellent	Good	Fair	Poor	Very Poor	2018	2017
Corn	1	38	38	12	11	62	84
Cotton	1	18	42	31	8	51	73
Peanuts	2	19	77	1	1	66	74
Rice	8	55	34	2	1	79	93
Sorghum	1	28	36	27	8	55	78
Soybeans	2	36	48	9	5	66	85
Wheat	2	17	31	21	29	43	64
Oats	14	44	26	4	12	72	64
Range and Pasture	2	16	40	28	14	--	--

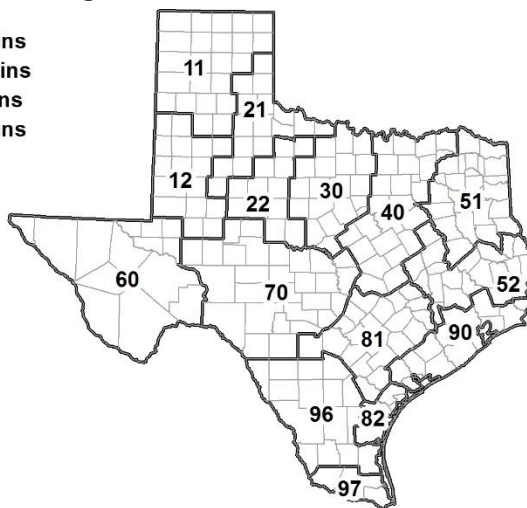
<sup>1</sup> The formula for the condition index is  $I = (5V + 25P + 60F + 90G + 110E)/100$  where I = crop condition index and V, P, F, G, E = percentage of crop rated very poor, poor, fair, good, excellent.

### Soil Moisture and Days Suitable by District

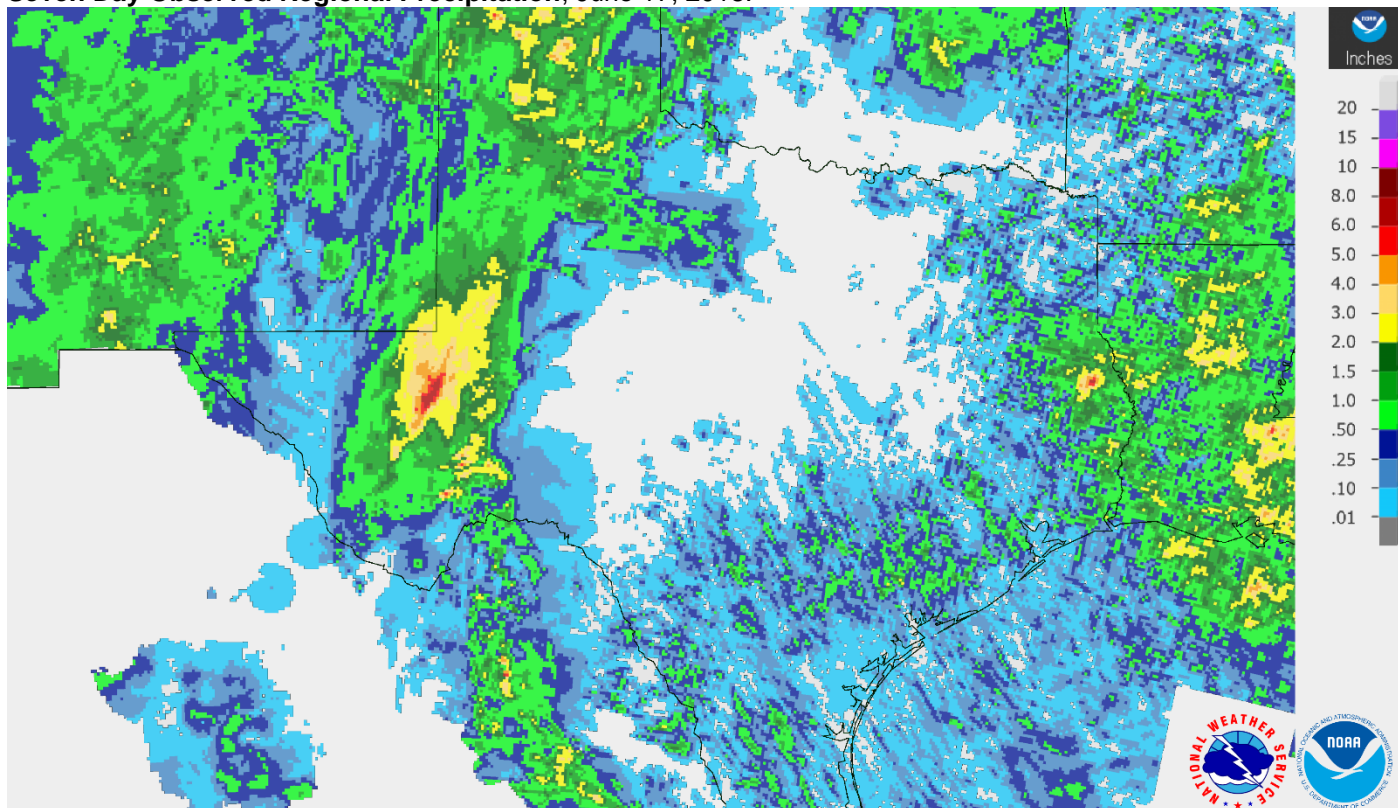
District	Topsoil Moisture Condition by District				Subsoil Moisture Condition by District				Days Suitable for Fieldwork
	Percentage of Acreage				Percentage of Acreage				
	Very Short	Short	Adequate	Surplus	Very Short	Short	Adequate	Surplus	
11	17	57	26	0	20	52	28	0	6.7
12	50	8	34	8	56	10	30	4	5.9
21	15	42	38	5	9	57	30	4	6.4
22	27	50	23	0	24	36	37	3	6.1
30	23	57	19	1	9	69	22	0	6.2
40	34	33	32	1	29	39	32	0	6.8
51	25	48	27	0	26	44	30	0	6.9
52	10	53	32	5	8	52	35	5	6.6
60	47	2	51	0	43	7	50	0	6.6
70	28	63	9	0	22	40	38	0	6.9
81	38	55	7	0	35	57	8	0	6.9
82	52	38	10	0	46	44	10	0	7.0
90	44	40	16	0	36	45	19	0	7.0
96	57	40	3	0	57	38	5	0	6.8
97	87	11	2	0	87	11	2	0	7.0
State	34	39	25	2	32	40	27	1	6.6

### Texas Agricultural Districts

- 11 Northern High Plains
- 12 Southern High Plains
- 21 Northern Low Plains
- 22 Southern Low Plains
- 30 Cross Timbers
- 40 Blacklands
- 51 North East
- 52 South East
- 60 Trans-Pecos
- 70 Edwards Plateau
- 81 South Central
- 82 Coastal Bend
- 90 Upper Coast
- 96 South
- 97 Lower Valley

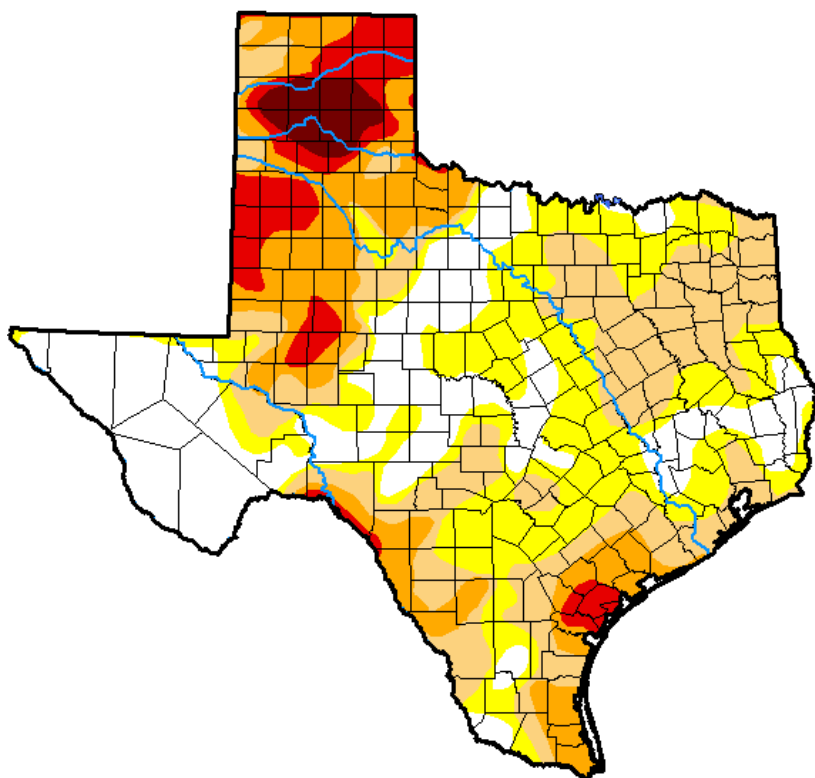


**Seven Day Observed Regional Precipitation, June 17, 2018.**



Source: National Weather Service, [www.nws.noaa.gov](http://www.nws.noaa.gov).

**Drought Monitor, Valid June 12, 2018.**



*Drought Conditions (Percent Area)*

	None	D0-D4	D1-D4	D2-D4	D3-D4	D4
<b>Current</b>	24.52	75.48	49.81	25.03	9.74	2.43
<b>Last Week</b> <i>06-05-2018</i>	21.20	78.80	44.37	23.44	7.29	1.59
<b>3 Months Ago</b> <i>03-13-2018</i>	24.83	75.17	54.19	22.29	14.19	0.00
<b>Start of Calendar Year</b> <i>01-02-2018</i>	33.37	66.63	33.56	5.94	0.11	0.00
<b>Start of Water Year</b> <i>09-26-2017</i>	70.54	29.46	4.17	0.04	0.00	0.00
<b>One Year Ago</b> <i>06-13-2017</i>	78.23	21.77	2.47	0.00	0.00	0.00

Intensity:

- D0 Abnormally Dry
- D1 Moderate Drought
- D2 Severe Drought
- D3 Extreme Drought
- D4 Exceptional Drought

*The Drought Monitor focuses on broad-scale conditions. Local conditions may vary. See accompanying text summary for forecast statements.*

Author:

Brian Fuchs  
National Drought Mitigation Center



Source: National Drought Mitigation Center, a partnership with USDA, U.S. Department of Commerce/NOAA, <http://droughtmonitor.unl.edu>.

**2017 CENSUS OF AGRICULTURE**

YOUR VOICE. YOUR FUTURE. YOUR OPPORTUNITY.



United States Department of Agriculture  
National Agricultural Statistics Service



**Last Chance to Be Counted.  
Respond Today!**

**Respond Online.** [www.agcounts.usda.gov](http://www.agcounts.usda.gov)

*For assistance completing the census,  
call toll-free (888) 424-7828.*

**[www.agcensus.usda.gov](http://www.agcensus.usda.gov)**