



# Texas Crop Progress and Condition

Southern Plains Regional Field Office  
Post Office Box 70 Austin, Texas 78767  
(800) 626-3142 · FAX (855) 270-2725 · [www.nass.usda.gov/tx](http://www.nass.usda.gov/tx)

**Issue: TX-CW2018**

**Weekly Summary for July 2-July 8**

**Released: July 9, 2018**

Warm weather affected most of the state during the past week, but rainfalls across the Gulf coast helped to cool down temperatures. Precipitation in the Upper Coast ranged from 2 to 6 inches, with isolated areas getting upwards of 10 inches. Rainfall in the Coastal Bend, the Lower Valley, South Texas, South Central Texas, the Edwards Plateau and the Trans-Pecos ranged from 0.5 to 2 inches, with isolated areas receiving upwards of 5 inches. There were 6.2 days suitable for fieldwork.

**Small Grains:** Wheat and oats harvest was nearly complete across the state. A few isolated areas in the Northern Plains were not finished harvesting.

**Row Crops:** Even with recent rainfalls, dryland cotton continued to struggle in the Plains and the Edwards Plateau. Cotton begun to bloom in the Blacklands. Cotton in South Texas was setting bolls, while bolls were opening in the Coastal Bend. Corn harvest began in South Texas and continued in the Lower Valley. Spider mite populations were becoming a problem in corn and sorghum in the Southern High Plains. Corn and sorghum harvest was underway in the Lower Valley, while rainfall in the Coastal Bend and South Texas slowed sorghum harvest. Grain sorghum in some areas of the Blacklands was being cut for hay due to poor yield potential.

**Fruit, Vegetable and Specialty Crops:** Watermelon harvest continued in South Texas and the Southern High Plains. Pecan producers continued to apply irrigation.

**Livestock, Range and Pasture:** Livestock conditions were mostly fair to good across the state. Supplemental feeding of livestock was reported in areas of the Cross Timbers, the Blacklands, North East Texas and South Texas. Low pond water levels were causing problem for livestock producers in North East Texas. Producers in areas of the Cross Timbers began to cull herds due to a lack of suitable forage. Pasture and range condition was rated 60 percent fair to poor.

### Crop Progress

Stage	Percent of Acreage			
	Current Week	Previous Week	Previous Year	5 Year Average
<b>Corn</b>				
Silked	68	59	65	68
Dough	54	49	52	50
Dented	48	30	44	38
Mature	17	N/A	14	13
<b>Cotton</b>				
Squaring	51	31	52	44
Setting Bolls	18	13	18	12
Bolls Opening	3	N/A	3	1
<b>Peanuts</b>				
Pegging	20	10	24	25
<b>Rice</b>				
Headed	66	51	68	52
<b>Sorghum</b>				
Headed	62	60	70	61
Coloring	56	50	54	47
Mature	40	33	39	32
Harvested for Grain	17	9	22	14
<b>Soybeans</b>				
Blooming	62	47	59	50
Setting Pods	30	N/A	14	9
<b>Sunflowers</b>				
Planted	100	90	94	95
Harvested	35	30	44	N/A
<b>Winter Wheat</b>				
Harvested	86	80	96	92
<b>Oats</b>				
Harvested	96	93	99	96

(NA) Not available.

### Crop Condition

Crop	Percent of Acreage					Index <sup>1</sup>	
	Excellent	Good	Fair	Poor	Very Poor	2018	2017
Corn	2	36	37	15	10	61	81
Cotton	2	19	37	29	13	49	71
Peanuts	0	39	60	1	0	71	--
Rice	9	50	39	2	0	79	80
Sorghum	3	23	40	25	9	53	80
Soybeans	10	18	55	13	4	64	79
Wheat	2	17	31	21	29	43	66
Oats	14	44	26	4	12	72	--
Range and Pasture	6	19	34	26	15	--	--

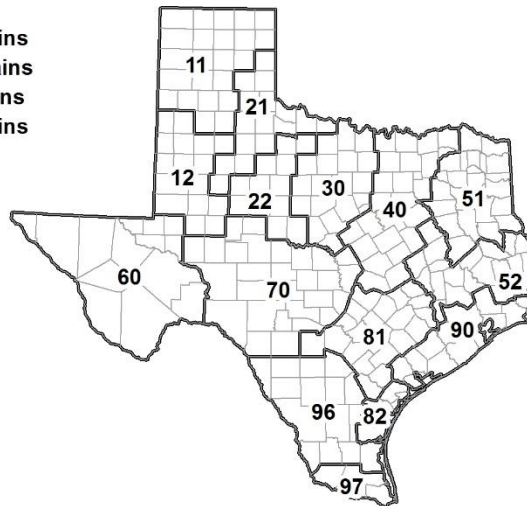
<sup>1</sup> The formula for the condition index is  $I = (5V + 25P + 60F + 90G + 110E)/100$  where I = crop condition index and V, P, F, G, E = percentage of crop rated very poor, poor, fair, good, excellent.

### Soil Moisture and Days Suitable by District

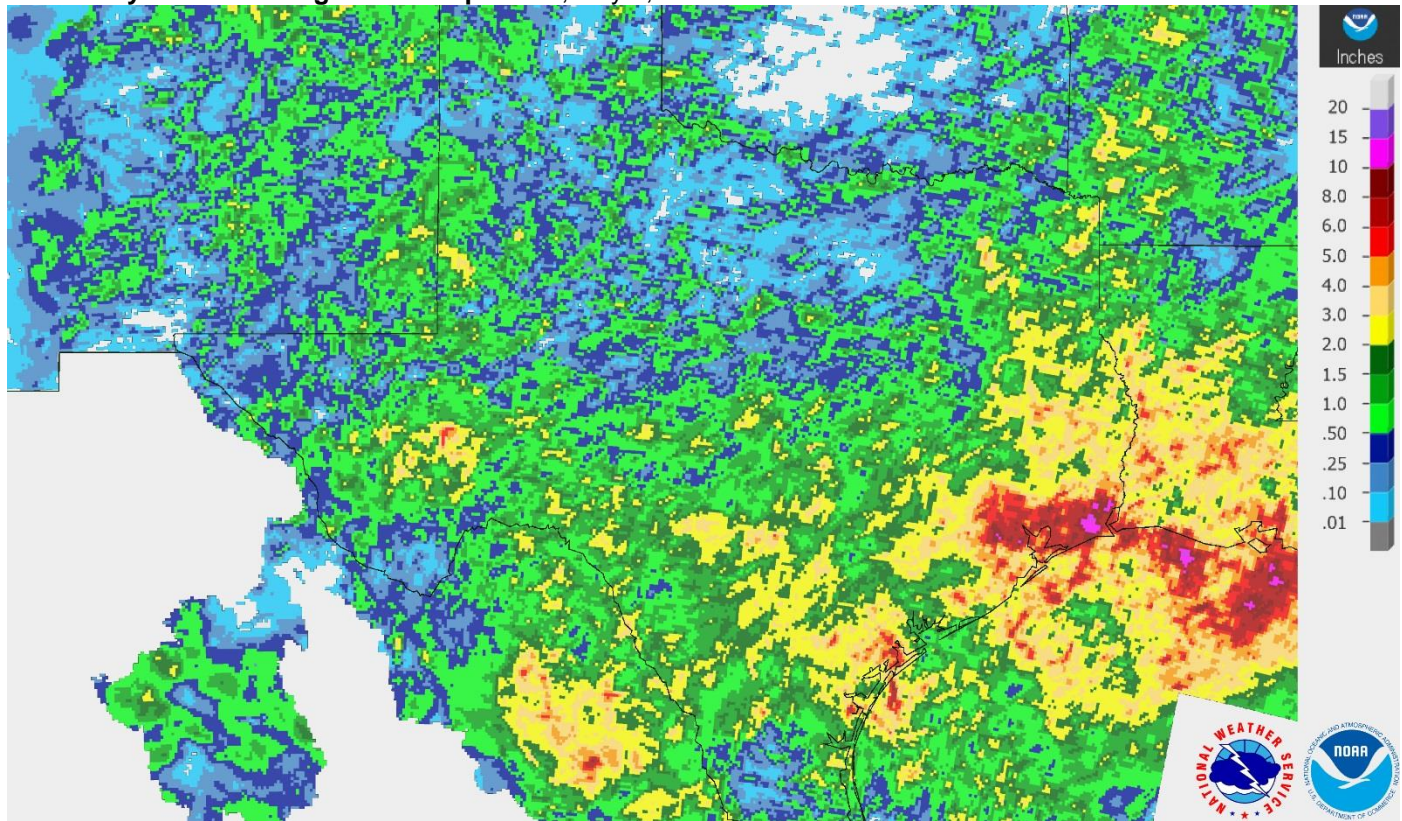
District	Topsoil Moisture Condition by District				Subsoil Moisture Condition by District				Days Suitable for Fieldwork
	Percentage of Acreage				Percentage of Acreage				
	Very Short	Short	Adequate	Surplus	Very Short	Short	Adequate	Surplus	
11	23	42	35	0	17	51	32	0	6.7
12	34	24	37	5	52	26	20	2	6.3
21	39	45	16	0	24	58	18	0	6.5
22	49	35	12	4	45	45	10	0	6.3
30	64	25	11	0	38	51	11	0	6.6
40	47	33	20	0	39	41	20	0	6.4
51	18	53	29	0	26	54	20	0	7.0
52	1	25	65	9	1	27	66	6	5.7
60	73	13	14	0	66	26	8	0	6.6
70	51	35	13	1	40	40	20	0	6.6
81	0	42	53	5	6	47	45	2	5.9
82	0	12	75	13	13	33	46	8	5.3
90	0	4	77	19	0	22	56	22	3.0
96	8	27	60	5	27	29	42	2	6.3
97	15	52	21	12	15	31	42	12	7.0
State	30	33	33	4	29	42	27	2	6.2

### Texas Agricultural Districts

- 11 Northern High Plains
- 12 Southern High Plains
- 21 Northern Low Plains
- 22 Southern Low Plains
- 30 Cross Timbers
- 40 Blacklands
- 51 North East
- 52 South East
- 60 Trans-Pecos
- 70 Edwards Plateau
- 81 South Central
- 82 Coastal Bend
- 90 Upper Coast
- 96 South
- 97 Lower Valley

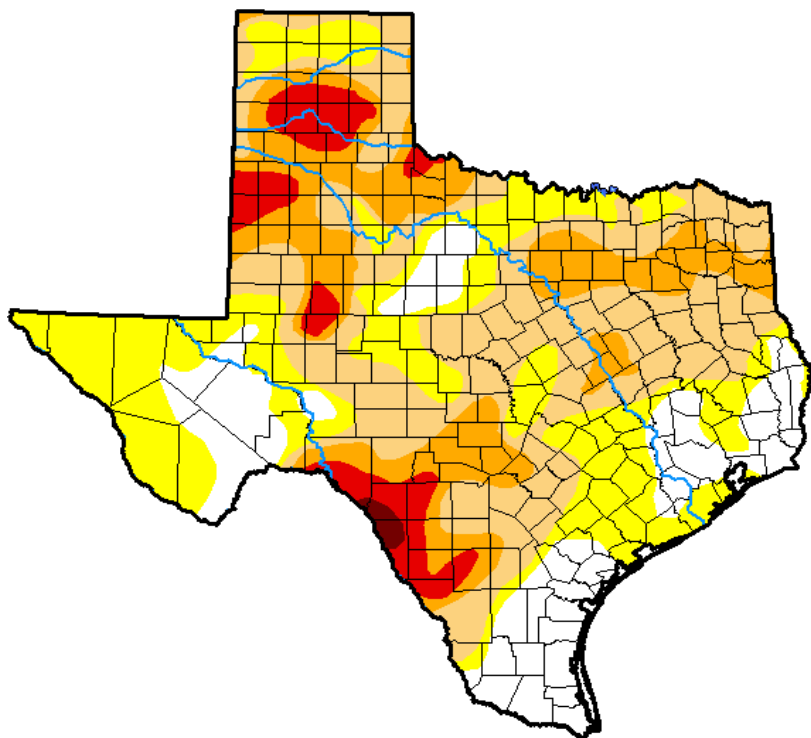


**Seven Day Observed Regional Precipitation, July 8, 2018.**



Source: National Weather Service, [www.nws.noaa.gov](http://www.nws.noaa.gov).

**Drought Monitor, Valid July 3, 2018.**



*Drought Conditions (Percent Area)*

	None	D0-D4	D1-D4	D2-D4	D3-D4	D4
<b>Current</b>	17.38	82.62	55.30	24.06	6.84	0.46
<b>Last Week</b> <i>06-26-2018</i>	27.33	72.67	47.80	17.91	5.07	0.00
<b>3 Months Ago</b> <i>04-03-2018</i>	33.29	66.71	49.43	21.57	13.21	1.47
<b>Start of Calendar Year</b> <i>01-02-2018</i>	33.37	66.63	33.56	5.94	0.11	0.00
<b>Start of Water Year</b> <i>09-26-2017</i>	70.54	29.46	4.17	0.04	0.00	0.00
<b>One Year Ago</b> <i>07-04-2017</i>	73.51	26.49	6.01	0.92	0.00	0.00

Intensity:

- D0 Abnormally Dry
- D1 Moderate Drought
- D2 Severe Drought
- D3 Extreme Drought
- D4 Exceptional Drought

*The Drought Monitor focuses on broad-scale conditions. Local conditions may vary. See accompanying text summary for forecast statements.*

Author:

Richard Tinker  
CPC/NOAA/NWS/NCEP



Source: National Drought Mitigation Center, a partnership with USDA, U.S. Department of Commerce/NOAA, <http://droughtmonitor.unl.edu>.

**Texas Crop Progress and Condition (9 July 2018)**

USDA, National Agricultural Statistics Service, Southern Plains Regional Field Office