



# Texas Crop Progress and Condition

Southern Plains Regional Field Office  
Post Office Box 70 Austin, Texas 78767  
(800) 626-3142 · FAX (855) 270-2725 · www.nass.usda.gov/tx

Issue: TX-CW2218

Weekly Summary for July 16 - July 22

Released: July 23, 2018

Hot, dry conditions were reported across virtually the entire state this past week, with most areas experiencing triple digit temperatures. Only areas of the High Plains, East Texas and the Trans-Pecos reported precipitation, however the rainfall received was generally less than half of an inch. The rest of the state reported little to no precipitation. There were 6.6 days suitable for fieldwork.

**Row Crops:** Cotton irrigation was active where available. Dryland cotton was struggling with the heat and lack of moisture. Boll worms were detected in North East Texas, while producers in the Upper Coast were spraying worms and stinkbugs. Cotton harvest started in the Lower Valley. Corn and sorghum harvest continued in the Blacklands, South Central Texas, the Upper Coast, South Texas and the Lower Valley. Sorghum continued to mature in the Northern Low Plains. Some sorghum and soybean fields in North East Texas failed due to the drought. Peanuts in South Texas were in the pegging stage.

**Fruit, Vegetable and Specialty Crops:** Producers were irrigating pecan trees in the Edwards Plateau. Vegetable growers irrigated crops in South East Texas.

**Livestock, Range and Pasture:** Livestock conditions continued to be rated mostly fair to good across the state. Supplemental feeding of livestock was reported in the Northern Low Plains, the Blacklands, the Edwards Plateau, South Texas and the Lower Valley. Low stock water tank levels were reported in the Southern Low Plains, the Blacklands and the Edwards Plateau. Pasture and range condition was rated 62 percent fair to poor.

Crop Progress

Stage	Percent of Acreage			
	Current Week	Previous Week	Previous Year	5 Year Average
<b>Corn</b>				
Silked	85	76	73	83
Dough	65	56	57	60
Dented	56	51	55	52
Mature	37	27	38	37
<b>Cotton</b>				
Squaring	71	66	69	75
Setting Bolls	29	23	25	25
Bolls Opening	10	7	7	6
<b>Peanuts</b>				
Pegging	56	42	39	53
<b>Rice</b>				
Headed	87	78	88	81
<b>Sorghum</b>				
Headed	75	70	78	79
Coloring	66	60	58	61
Mature	56	53	49	49
Harvested	44	35	37	29
<b>Soybeans</b>				
Blooming	71	67	69	67
Setting Pods	37	34	37	35
<b>Sunflowers</b>				
Harvested	44	42	N/A	N/A

(NA) Not available.

### Crop Condition

Crop	Percent of Acreage					Index <sup>1</sup>	
	Excellent	Good	Fair	Poor	Very Poor	2018	2017
Corn	2	30	36	20	12	56	86
Cotton	2	18	31	27	22	45	69
Peanuts	0	53	46	1	0	76	76
Rice	3	39	53	5	0	71	79
Sorghum	3	22	40	24	11	54	80
Soybeans	8	12	63	9	8	60	76
Oats	14	44	26	4	12	72	68
Range and Pasture	2	19	37	25	17	--	--

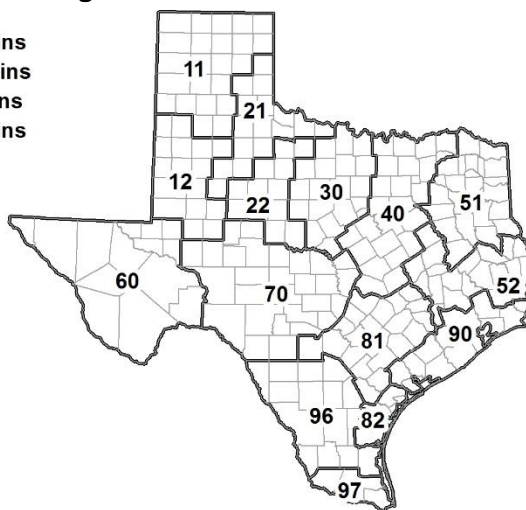
<sup>1</sup> The formula for the condition index is  $I = (5V + 25P + 60F + 90G + 110E)/100$  where I = crop condition index and V, P, F, G, E = percentage of crop rated very poor, poor, fair, good, excellent.

### Soil Moisture and Days Suitable by District

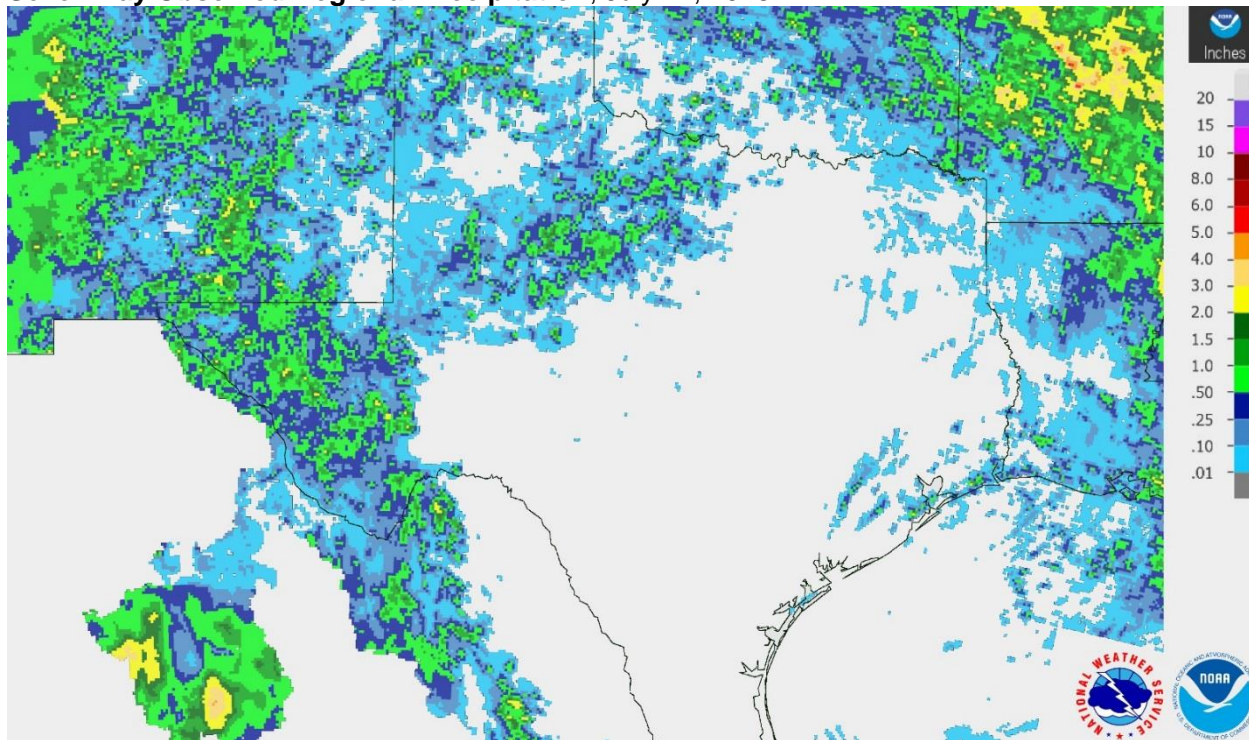
District	Topsoil Moisture Condition by District				Subsoil Moisture Condition by District				Days Suitable for Fieldwork
	Percentage of Acreage				Percentage of Acreage				
	Very Short	Short	Adequate	Surplus	Very Short	Short	Adequate	Surplus	
11	31	33	36	0	21	43	36	0	6.6
12	33	45	22	0	66	34	0	0	6.4
21	51	33	16	0	43	44	13	0	6.9
22	53	44	3	0	52	41	7	0	6.5
30	54	35	11	0	50	34	16	0	6.3
40	66	19	15	0	67	19	14	0	6.6
51	24	60	16	0	26	52	22	0	7.0
52	1	55	44	0	1	52	47	0	7.0
60	35	24	41	0	19	40	41	0	6.8
70	71	18	11	0	50	41	9	0	6.9
81	7	68	25	0	5	68	27	0	6.7
82	50	50	0	0	10	30	60	0	7.0
90	1	25	73	1	0	26	71	3	6.6
96	24	37	39	0	35	22	43	0	6.8
97	15	54	31	0	15	54	31	0	7.0
State	37	38	25	0	39	38	23	0	6.6

### Texas Agricultural Districts

- 11 Northern High Plains
- 12 Southern High Plains
- 21 Northern Low Plains
- 22 Southern Low Plains
- 30 Cross Timbers
- 40 Blacklands
- 51 North East
- 52 South East
- 60 Trans-Pecos
- 70 Edwards Plateau
- 81 South Central
- 82 Coastal Bend
- 90 Upper Coast
- 96 South
- 97 Lower Valley

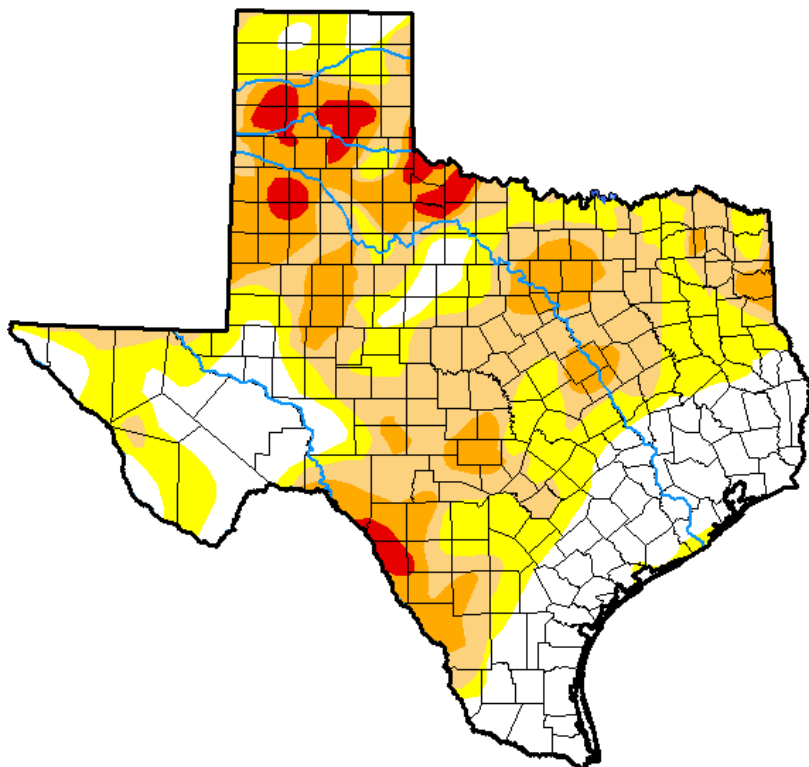


**Seven Day Observed Regional Precipitation, July 22, 2018.**



Source: National Weather Service, [www.nws.noaa.gov](http://www.nws.noaa.gov).

**Drought Monitor, Valid July 17, 2018.**



*Drought Conditions (Percent Area)*

	None	D0-D4	D1-D4	D2-D4	D3-D4	D4
<b>Current</b>	27.67	72.33	45.81	18.78	3.38	0.00
<b>Last Week</b> <i>07-10-2018</i>	24.87	75.13	49.41	19.07	4.95	0.00
<b>3 Months Ago</b> <i>04-17-2018</i>	35.09	64.91	49.47	23.58	13.70	4.37
<b>Start of Calendar Year</b> <i>01-02-2018</i>	33.37	66.63	33.56	5.94	0.11	0.00
<b>Start of Water Year</b> <i>09-26-2017</i>	70.54	29.46	4.17	0.04	0.00	0.00
<b>One Year Ago</b> <i>07-18-2017</i>	74.42	25.58	7.85	0.46	0.00	0.00

Intensity:

- D0 Abnormally Dry
- D1 Moderate Drought
- D2 Severe Drought
- D3 Extreme Drought
- D4 Exceptional Drought

*The Drought Monitor focuses on broad-scale conditions. Local conditions may vary. See accompanying text summary for forecast statements.*

Author:

Curtis Riganti  
National Drought Mitigation Center



Source: National Drought Mitigation Center, a partnership with USDA, U.S. Department of Commerce/NOAA, <http://droughtmonitor.unl.edu>.