



Texas Crop Progress and Condition

Southern Plains Regional Field Office
Post Office Box 70 Austin, Texas 78767
(800) 626-3142 · FAX (855) 270-2725 · www.nass.usda.gov/tx

Issue: TX-CW2318

Weekly Summary for July 23 – 29

Released: July 30, 2018

Hot, dry conditions persisted across many areas of the state last week. Areas of the High Plains and the Northern Low Plains reported precipitation ranging between 0.5 and 1.0 inch, with isolated areas getting upwards of 3 inches. The rest of the state reported little to no precipitation. There were 6.6 days suitable for fieldwork.

Row Crops: Cotton was blooming in the Southern Low Plains, but showed drought related stress. Aphids and beet armyworms were reported in cotton in the Southern High Plains. Cotton harvest was underway in areas of the Coastal Bend and South Texas. Spider mites were reported in corn and sorghum in the Southern High Plains. Corn, sorghum and sunflowers were being harvested in the Cross Timbers, although some corn was being baled for cattle feed. Corn and sorghum harvest continued in East Texas, and South Central Texas, while nearing completion in the Coastal Bend, the Upper Coast and South Texas.

Fruit, Vegetable and Specialty Crops: Watermelon harvest slowed down in the Southern High Plains and North East Texas. The peach harvest was coming to an end in North East Texas. Pecan nut casebearer populations were increasing in the Trans-Pecos.

Livestock, Range and Pasture: Livestock conditions continued to be rated mostly fair to good across the state. Supplemental feeding of livestock was reported in the Low Plains, the Cross Timbers, the Blacklands and South Texas. Cattle in the Northern Low Plains were being treated for ear mites and flies. Producers in areas of the Southern Low Plains, the Cross Timbers and the Blacklands began to cull and sell herds due to a lack of suitable forage. Pasture and range condition was rated 69 percent fair to poor.

Crop Progress

Stage	Percent of Acreage			
	Current Week	Previous Week	Previous Year	5 Year Average
Corn				
Silked	89	85	92	92
Dough	71	65	61	68
Dented	60	56	57	59
Mature	46	37	48	44
Harvested	16	N/A	19	7
Cotton				
Squaring	84	71	81	85
Setting Bolls	35	29	32	35
Bolls Opening	11	10	11	8
Peanuts				
Pegging	65	56	53	65
Rice				
Headed	94	87	93	89
Harvested	6	0	9	5
Sorghum				
Headed	80	75	83	84
Coloring	71	66	60	65
Mature	58	56	52	55
Harvested	48	44	45	35
Soybeans				
Blooming	83	71	85	79
Setting Pods	52	37	49	49
Dropping Leaves	4	N/A	5	2
Sunflowers				
Harvested	46	44	4	6

(NA) Not available.

Crop Condition

Crop	Percent of Acreage					Index ¹	
	Excellent	Good	Fair	Poor	Very Poor	2018	2017
Corn	6	30	33	16	15	58	82
Cotton	5	19	29	29	18	48	66
Peanuts	0	45	54	1	0	73	70
Rice	3	39	53	5	0	71	82
Sorghum	12	21	34	22	11	59	80
Soybeans	11	13	62	9	5	64	73
Oats	14	44	26	4	12	72	68
Range and Pasture	1	12	37	32	18	--	--

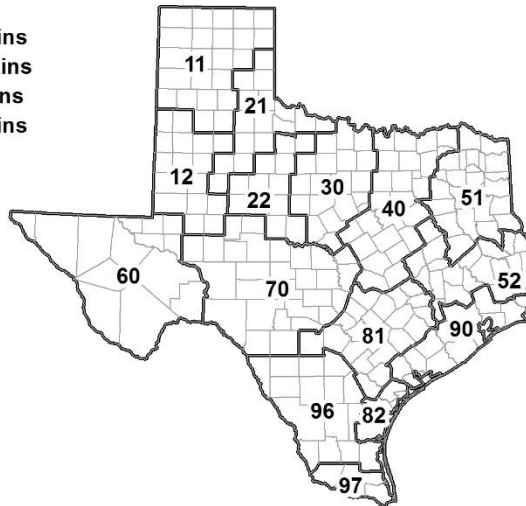
¹ The formula for the condition index is $I = (5V + 25P + 60F + 90G + 110E)/100$ where I = crop condition index and V, P, F, G, E = percentage of crop rated very poor, poor, fair, good, excellent.

Soil Moisture and Days Suitable by District

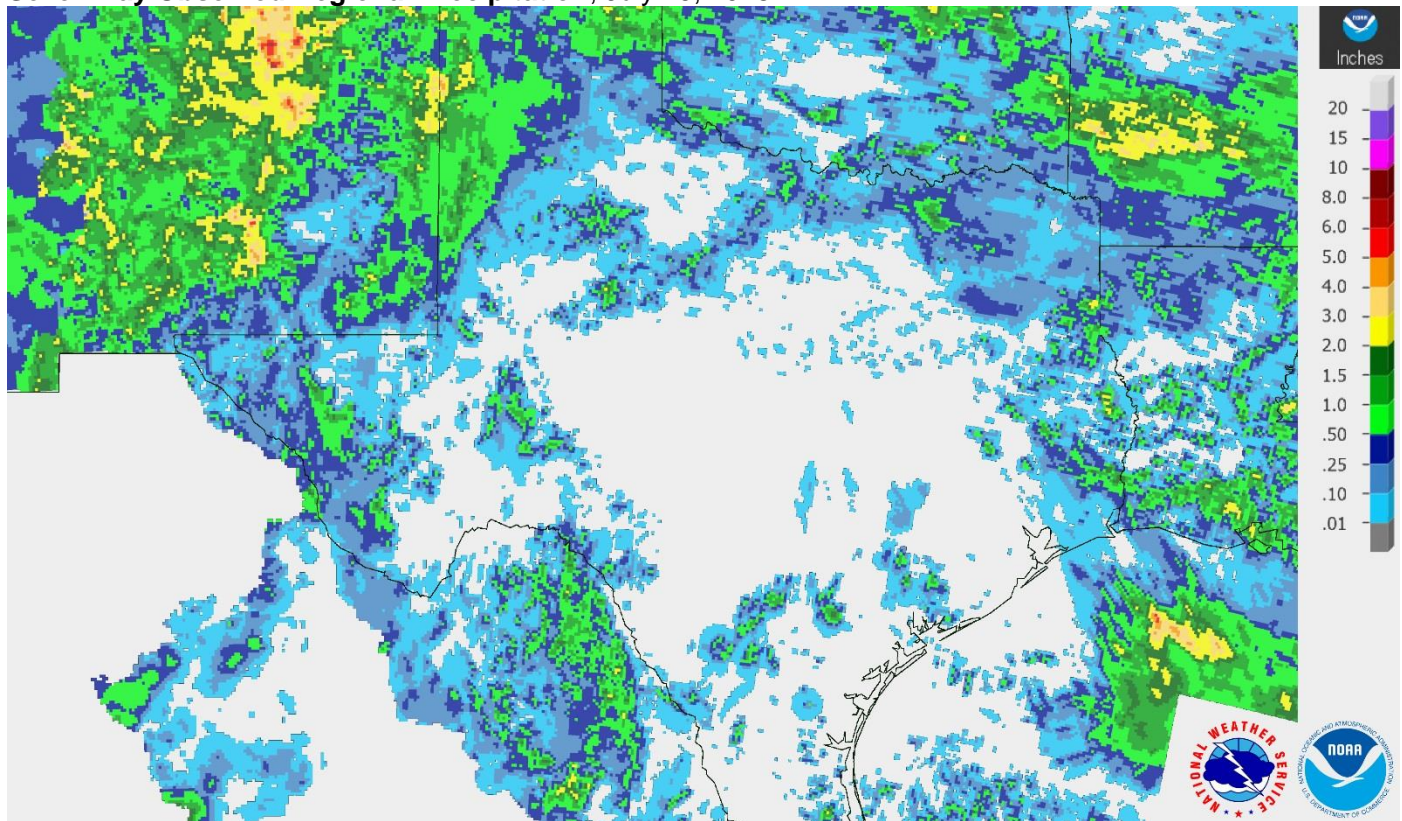
District	Topsoil Moisture Condition by District				Subsoil Moisture Condition by District				Days Suitable for Fieldwork
	Percentage of Acreage				Percentage of Acreage				
	Very Short	Short	Adequate	Surplus	Very Short	Short	Adequate	Surplus	
11	20	36	44	0	20	45	35	0	6.3
12	19	40	40	1	50	33	16	1	6.5
21	59	27	14	0	50	33	17	0	6.8
22	70	29	1	0	64	35	1	0	6.6
30	60	31	9	0	47	40	13	0	6.3
40	49	35	16	0	49	33	18	0	6.5
51	36	57	7	0	38	51	11	0	7.0
52	14	57	24	5	13	58	24	5	6.9
60	28	19	53	0	15	42	43	0	6.8
70	63	33	4	0	41	54	5	0	6.9
81	28	62	10	0	21	67	12	0	6.8
82	68	3	29	0	20	37	43	0	7.0
90	1	43	56	0	1	37	61	1	7.0
96	42	39	19	0	46	28	26	0	6.8
97	20	70	10	0	20	70	10	0	7.0
State	35	39	26	0	36	42	22	0	6.6

Texas Agricultural Districts

- 11 Northern High Plains
- 12 Southern High Plains
- 21 Northern Low Plains
- 22 Southern Low Plains
- 30 Cross Timbers
- 40 Blacklands
- 51 North East
- 52 South East
- 60 Trans-Pecos
- 70 Edwards Plateau
- 81 South Central
- 82 Coastal Bend
- 90 Upper Coast
- 96 South
- 97 Lower Valley

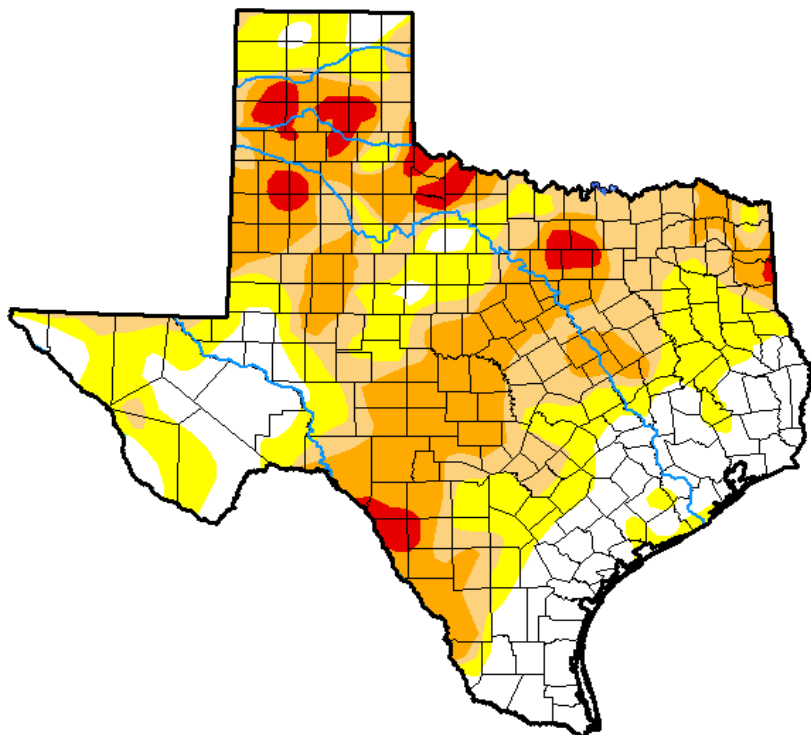


Seven Day Observed Regional Precipitation, July 29, 2018.



Source: National Weather Service, www.nws.noaa.gov.

Drought Monitor, Valid July 24, 2018.



Drought Conditions (Percent Area)

	None	D0-D4	D1-D4	D2-D4	D3-D4	D4
Current	24.54	75.46	50.13	28.15	4.32	0.00
Last Week <i>07-17-2018</i>	27.67	72.33	45.81	18.78	3.38	0.00
3 Months Ago <i>04-24-2018</i>	33.36	66.64	53.23	26.26	14.54	3.88
Start of Calendar Year <i>01-02-2018</i>	33.37	66.63	33.56	5.94	0.11	0.00
Start of Water Year <i>09-26-2017</i>	70.54	29.46	4.17	0.04	0.00	0.00
One Year Ago <i>07-25-2017</i>	75.04	24.96	8.99	1.26	0.00	0.00

Intensity:

- D0 Abnormally Dry
- D1 Moderate Drought
- D2 Severe Drought
- D3 Extreme Drought
- D4 Exceptional Drought

The Drought Monitor focuses on broad-scale conditions. Local conditions may vary. See accompanying text summary for forecast statements.

Author:

Chris Fenimore
NCEI/NESDIS/NOAA



Source: National Drought Mitigation Center, a partnership with USDA, U.S. Department of Commerce/NOAA, <http://droughtmonitor.unl.edu>.

Texas Crop Progress and Condition (30 July 2018)

USDA, National Agricultural Statistics Service, Southern Plains Regional Field Office