



# Texas Crop Progress and Condition

Southern Plains Regional Field Office  
Post Office Box 70 Austin, Texas 78767  
(800) 626-3142 · FAX (855) 270-2725 · [www.nass.usda.gov/tx](http://www.nass.usda.gov/tx)

**Issue: TX-CW2418**

**Weekly Summary for July 30-August 5**

**Released: August 6, 2018**

Hot conditions continued across the state last week. High temperatures in the triple digits were experienced in many areas of the state. Areas of the Upper Coast, the Coastal Bend and South East Texas received between 0.5 and 2.0 inches of rain, with isolated areas getting upwards of 5.0 inches. Also, areas of the Trans-Pecos, the Edwards Plateau and the Southern Low Plains received precipitation ranging from 0.5 to 1.0 inch. There were 6.6 days suitable for fieldwork.

**Small Grains:** Small grain producers in the High Plains, the Cross Timbers and the Blacklands were preparing their fields for fall seeding.

**Row Crops:** Dryland cotton in the Plains remained in mostly poor condition, while irrigated cotton was progressing well and setting bolls. Cotton harvest continued in the Coastal Bend, South Texas and the Lower Valley. Cotton producers were spraying defoliant in areas of the Blacklands and the Upper Coast. Corn and sorghum harvest got underway in South East Texas and continued in the Blacklands, South Central Texas, the Upper Coast and South Texas. Rice harvest was in full swing in South Central Texas and the Upper Coast.

**Fruit, Vegetable and Specialty Crops:** Cantaloupes, watermelons, and pecans were being irrigated in South Texas. Reports were received of pecan nut casebearer causing harm to pecan trees in the Trans-Pecos.

**Livestock, Range and Pasture:** Cattle and pasture conditions declined in the Plains as livestock producers looked to reduce their herds. Supplemental feeding of livestock was reported in the Plains, the Cross Timbers, the Blacklands, South Central and South Texas. Second shearing of sheep and goats was underway in the Edwards Plateau. Pasture and range condition was rated 76 percent poor to fair.

### Crop Progress

Stage	Percent of Acreage			
	Current Week	Previous Week	Previous Year	5 Year Average
<b>Corn</b>				
Silked	92	89	98	97
Dough	86	71	65	77
Dented	70	60	58	61
Mature	51	46	51	49
Harvested	30	16	30	19
<b>Cotton</b>				
Squaring	90	84	89	93
Setting Bolls	47	35	43	52
Bolls Opening	14	11	12	10
Harvested	2	N/A	1	0
<b>Peanuts</b>				
Pegging	72	65	63	79
<b>Rice</b>				
Headed	99	94	98	95
Harvested	23	6	34	18
<b>Sorghum</b>				
Headed	86	80	85	85
Coloring	76	71	61	70
Mature	60	58	54	61
Harvested	57	48	49	41
<b>Soybeans</b>				
Blooming	95	83	89	84
Setting Pods	65	52	73	63
Harvested	14	4	14	7
<b>Sunflowers</b>				
Harvested	48	46	18	12

(NA) Not available.

### Crop Condition

Crop	Percent of Acreage					Index <sup>1</sup>	
	Excellent	Good	Fair	Poor	Very Poor	2018	2017
Corn	5	26	37	20	12	57	83
Cotton	3	18	30	31	18	46	68
Peanuts	0	45	52	3	0	72	79
Rice	3	38	55	4	0	72	82
Sorghum	6	19	37	26	12	53	81
Soybeans	8	12	64	10	6	61	76
Range and Pasture	1	10	30	36	23	--	--

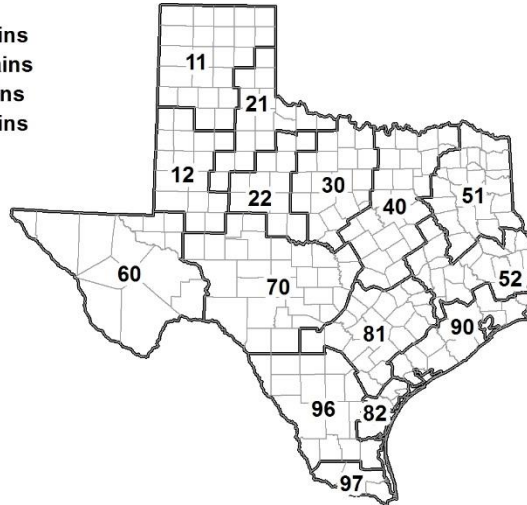
<sup>1</sup> The formula for the condition index is  $I = (5V + 25P + 60F + 90G + 110E)/100$  where I = crop condition index and V, P, F, G, E = percentage of crop rated very poor, poor, fair, good, excellent.

### Soil Moisture and Days Suitable by District

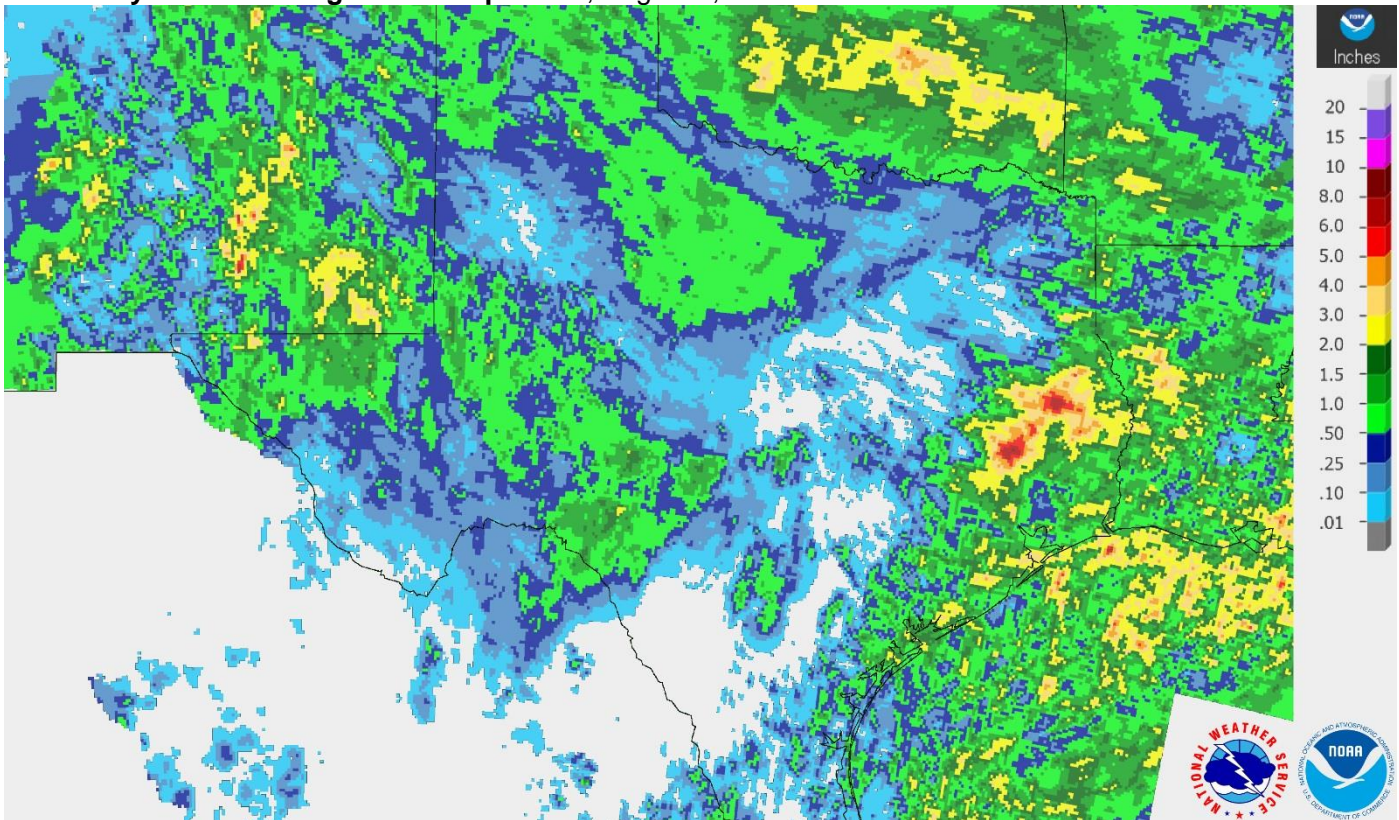
District	Topsoil Moisture Condition by District				Subsoil Moisture Condition by District				Days Suitable for Fieldwork
	Percentage of Acreage				Percentage of Acreage				
	Very Short	Short	Adequate	Surplus	Very Short	Short	Adequate	Surplus	
11	31	44	25	0	22	57	21	0	6.8
12	15	52	33	0	44	47	7	2	6.6
21	54	26	20	0	53	31	16	0	6.9
22	65	35	0	0	52	45	3	0	6.2
30	61	30	9	0	47	40	13	0	6.0
40	65	27	8	0	59	32	9	0	6.5
51	44	46	10	0	48	39	13	0	7.0
52	18	48	29	5	16	54	27	3	6.6
60	25	21	54	0	15	47	38	0	6.8
70	82	15	3	0	55	41	4	0	6.7
81	38	54	8	0	24	65	11	0	6.5
82	22	32	41	5	25	51	19	5	7.0
90	4	33	62	1	3	33	64	0	6.1
96	41	45	14	0	48	30	22	0	7.0
97	21	48	31	0	21	48	31	0	7.0
State	39	39	22	0	38	44	17	1	6.6

### Texas Agricultural Districts

- 11 Northern High Plains
- 12 Southern High Plains
- 21 Northern Low Plains
- 22 Southern Low Plains
- 30 Cross Timbers
- 40 Blacklands
- 51 North East
- 52 South East
- 60 Trans-Pecos
- 70 Edwards Plateau
- 81 South Central
- 82 Coastal Bend
- 90 Upper Coast
- 96 South
- 97 Lower Valley

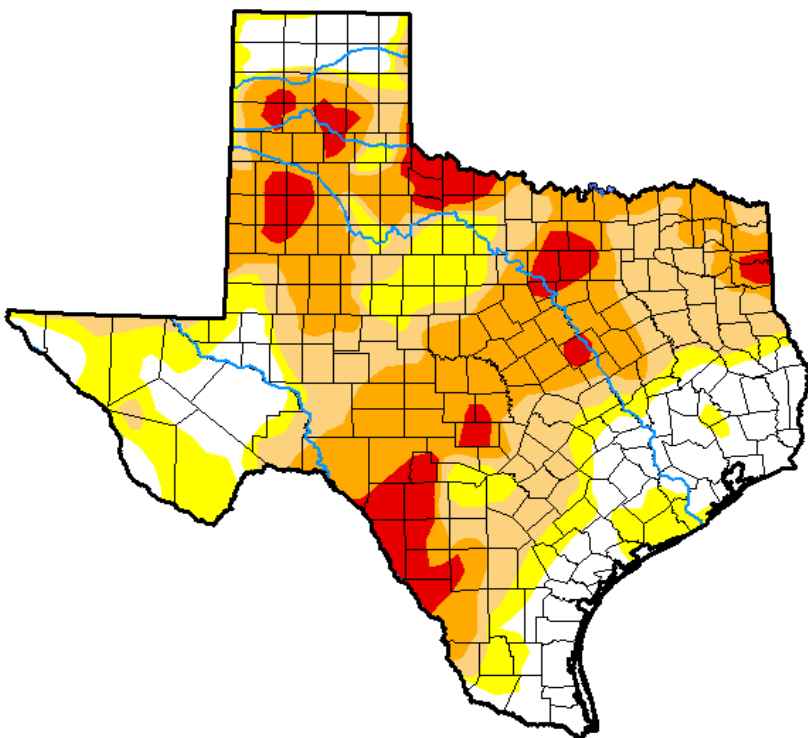


**Seven Day Observed Regional Precipitation, August 5, 2018.**



Source: National Weather Service, [www.nws.noaa.gov](http://www.nws.noaa.gov).

**Drought Monitor, Valid July 31, 2018.**



*Drought Conditions (Percent Area)*

	None	D0-D4	D1-D4	D2-D4	D3-D4	D4
<b>Current</b>	21.82	78.18	59.26	35.93	8.48	0.00
<b>Last Week</b> <i>07-24-2018</i>	24.54	75.46	50.13	28.15	4.32	0.00
<b>3 Months Ago</b> <i>05-01-2018</i>	33.60	66.40	49.36	25.50	13.94	4.31
<b>Start of Calendar Year</b> <i>01-02-2018</i>	33.37	66.63	33.56	5.94	0.11	0.00
<b>Start of Water Year</b> <i>09-26-2017</i>	70.54	29.46	4.17	0.04	0.00	0.00
<b>One Year Ago</b> <i>08-01-2017</i>	73.48	26.52	9.90	0.73	0.00	0.00

Intensity:

- D0 Abnormally Dry
- D1 Moderate Drought
- D2 Severe Drought
- D3 Extreme Drought
- D4 Exceptional Drought

*The Drought Monitor focuses on broad-scale conditions. Local conditions may vary. See accompanying text summary for forecast statements.*

Author:

Chris Fenimore  
NCEI/NESDIS/NOAA



Source: National Drought Mitigation Center, a partnership with USDA, U.S. Department of Commerce/NOAA, <http://droughtmonitor.unl.edu>.

**Texas Crop Progress and Condition (6 August 2018)**

USDA, National Agricultural Statistics Service, Southern Plains Regional Field Office