



## Texas Crop Progress and Condition

---

Southern Plains Regional Field Office  
Post Office Box 70 Austin, Texas 78767  
(800) 626-3142 · FAX (855) 270-2725 · [www.nass.usda.gov/tx](http://www.nass.usda.gov/tx)

---

**Issue: TX-CW2718**

**Weekly Summary for August 20- 26**

**Released: August 27, 2018**

---

Average temperatures across the state were slightly higher this week than the previous week. Bands of rain brought from trace amounts up to 2 inches of precipitation to South East Texas, the Upper Coast, parts of Central Texas the Trans-Pecos, the High Plains and the Northern Low Plains. There were 6.6 days suitable for fieldwork.

**Small Grains:** Field preparations continued for the 2019 wheat and oat crops. Early winter wheat seeding was underway in areas of the Northern High Plains.

**Row Crops:** Cotton was setting bolls in the Northern Low Plains, however flea hopper presence was reported in irrigated fields. Cotton harvest was underway in the Blacklands, East Texas, South Central Texas, the Upper Coast, South Texas and the Lower Valley. Producers in the Northern High Plains were using pesticides on sorghum to control populations of sugarcane aphids and head worms. Rice harvest was nearing completion in South Central Texas. Soybeans harvest continued in the Upper Coast.

**Fruit, Vegetable and Specialty Crops:** Pecan leaf scorch was showing up in some orchards of North East Texas. The pecan crop was in need of water in areas of the Trans-Pecos. Cantaloupes and watermelons were progressing well in South Texas. Producers in South Texas and the Lower Valley were preparing vegetable land for planting.

**Livestock, Range and Pasture:** Supplemental feeding of livestock persisted in the Northern Low Plains, the Blacklands, North East Texas, South Central Texas, South Texas and the Lower Valley. Stock tanks were nearing critically low levels in several areas of the state. Pasture and range condition was rated 67 percent poor to fair.

### Crop Progress

Stage	Percent of Acreage			
	Current Week	Previous Week	Previous Year	5 Year Average
<b>Corn</b>				
Dough	95	93	95	93
Dented	88	82	81	75
Mature	61	58	63	62
Harvested	52	51	54	51
<b>Cotton</b>				
Setting Bolls	88	82	90	89
Bolls Opening	20	19	17	18
Harvested	9	8	12	6
<b>Peanuts</b>				
Pegging	97	90	98	99
Mature	7	5	5	2
<b>Rice</b>				
Harvested	74	60	85	70
<b>Sorghum</b>				
Headed	95	90	94	93
Coloring	82	80	80	79
Mature	71	65	71	71
Harvested	62	60	58	56
<b>Soybeans</b>				
Setting Pods	85	80	92	84
Dropping Leaves	38	30	44	40
Harvested	10	5	4	10
<b>Sunflowers</b>				
Harvested	59	57	35	31

### Crop Condition

Crop	Percent of Acreage					Index <sup>1</sup>	
	Excellent	Good	Fair	Poor	Very Poor	2018	2017
Corn	2	27	35	24	12	54	87
Cotton	6	21	27	26	20	49	75
Peanuts	1	54	44	1	0	76	82
Rice	5	44	50	1	0	75	84
Sorghum	5	18	39	26	12	52	85
Soybeans	9	15	58	10	8	61	84
Range and Pasture	1	11	33	34	21	--	--

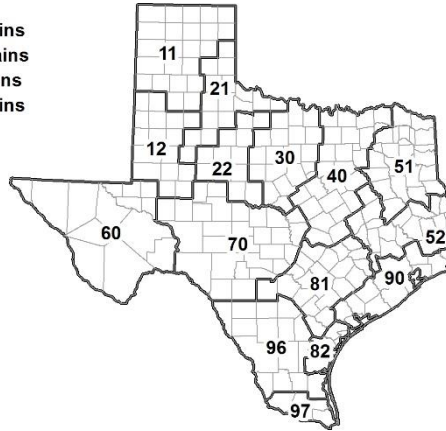
<sup>1</sup> The formula for the condition index is  $I = (5V + 25P + 60F + 90G + 110E)/100$  where I = crop condition index and V, P, F, G, E = percentage of crop rated very poor, poor, fair, good, excellent.

### Soil Moisture and Days Suitable by District

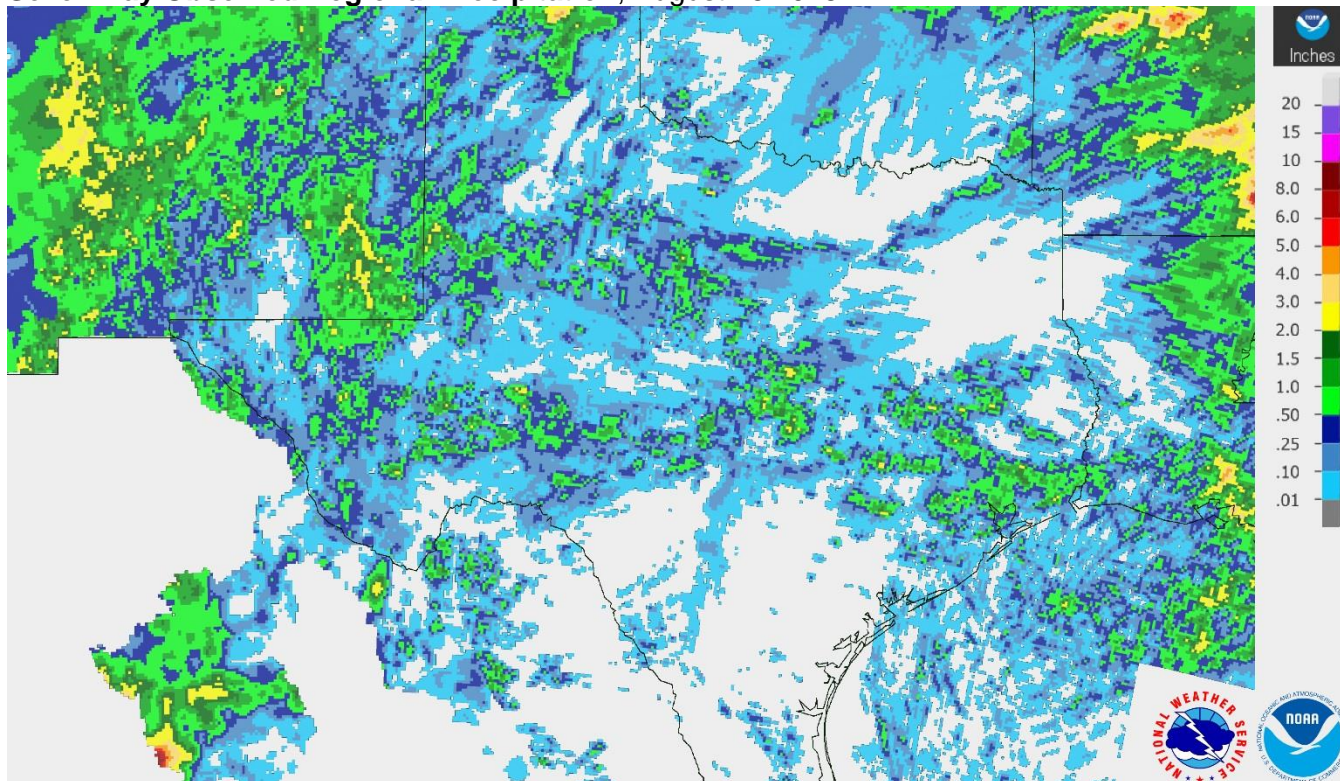
District	Topsoil Moisture Condition by District				Subsoil Moisture Condition by District				Days Suitable for Fieldwork
	Percentage of Acreage				Percentage of Acreage				
	Very Short	Short	Adequate	Surplus	Very Short	Short	Adequate	Surplus	
11	18	37	45	0	19	45	36	0	6.6
12	11	46	42	1	19	55	26	0	6.8
21	43	26	31	0	45	28	27	0	6.6
22	31	51	18	0	42	42	16	0	6.1
30	20	46	34	0	32	42	26	0	6.1
40	32	35	32	1	24	44	30	2	6.4
51	37	47	16	0	32	48	20	0	7.0
52	23	45	27	5	23	46	28	3	7.0
60	18	24	58	0	26	15	59	0	6.6
70	15	50	34	1	19	37	44	0	5.9
81	44	48	8	0	38	53	9	0	6.8
82	53	5	40	2	39	32	24	5	7.0
90	10	52	38	0	10	50	40	0	6.7
96	45	48	7	0	35	44	21	0	6.8
97	37	59	4	0	26	41	33	0	7.0
State	25	42	33	0	26	45	29	0	6.6

### Texas Agricultural Districts

- 11 Northern High Plains
- 12 Southern High Plains
- 21 Northern Low Plains
- 22 Southern Low Plains
- 30 Cross Timbers
- 40 Blacklands
- 51 North East
- 52 South East
- 60 Trans-Pecos
- 70 Edwards Plateau
- 81 South Central
- 82 Coastal Bend
- 90 Upper Coast
- 96 South
- 97 Lower Valley

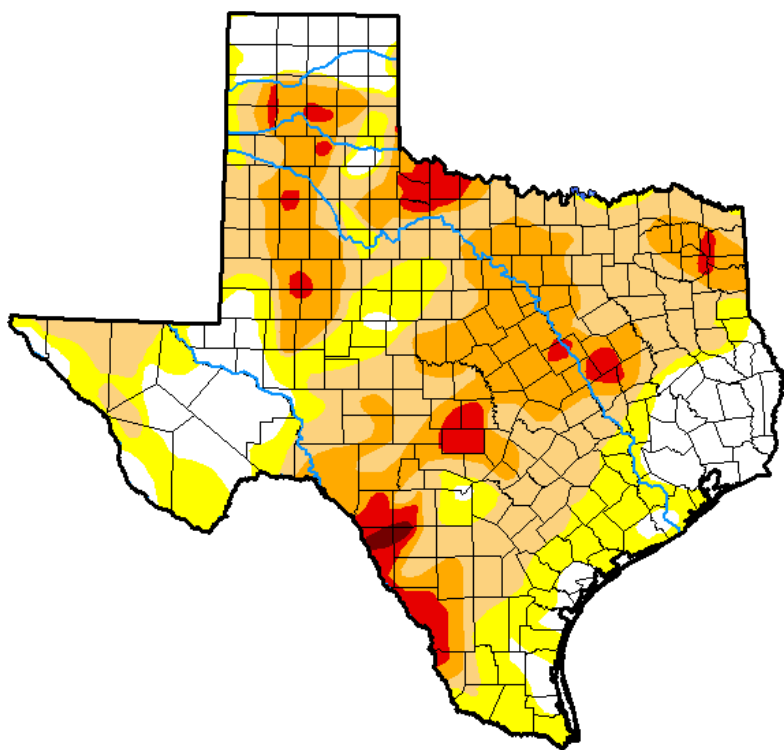


**Seven Day Observed Regional Precipitation, August 26 2018.**



Source: National Weather Service, [www.nws.noaa.gov](http://www.nws.noaa.gov).

**Drought Monitor, Valid August 21, 2018.**



*Drought Conditions (Percent Area)*

	None	D0-D4	D1-D4	D2-D4	D3-D4	D4
<b>Current</b>	18.99	81.01	59.88	28.00	5.22	0.30
<b>Last Week</b> <i>08-14-2018</i>	22.28	77.72	59.18	32.14	6.22	0.35
<b>3 Months Ago</b> <i>05-22-2018</i>	37.32	62.68	40.53	22.46	9.20	2.54
<b>Start of Calendar Year</b> <i>01-02-2018</i>	33.37	66.63	33.56	5.94	0.11	0.00
<b>Start of Water Year</b> <i>09-26-2017</i>	70.54	29.46	4.17	0.04	0.00	0.00
<b>One Year Ago</b> <i>08-22-2017</i>	86.44	13.56	2.47	0.00	0.00	0.00

Intensity:

- D0 Abnormally Dry
- D1 Moderate Drought
- D2 Severe Drought
- D3 Extreme Drought
- D4 Exceptional Drought

*The Drought Monitor focuses on broad-scale conditions. Local conditions may vary. See accompanying text summary for forecast statements.*

Author:

Jessica Blunden  
NCEI/NOAA



Source: National Drought Mitigation Center, a partnership with USDA, U.S. Department of Commerce/NOAA, <http://droughtmonitor.unl.edu>.

**Texas Crop Progress and Condition (August 2018)**

USDA, National Agricultural Statistics Service, Southern Plains Regional Field Office