



Texas Crop Progress and Condition

Southern Plains Regional Field Office
Post Office Box 70 Austin, Texas 78767
(800) 626-3142 · FAX (855) 270-2725 · www.nass.usda.gov/tx

Issue: TX-CW2818 Weekly Summary for August 27-September 2 Released: September 4, 2018

Most areas of the state experienced warmer temperatures last week, with the exception of the Upper Coast, where precipitation ranged from 1 inch up to 5 inches with isolated areas receiving upwards of 10 inches. Isolated areas of the Edwards Plateau, South Central Texas and South Texas also received upwards of 5 inches of rain. There were 6.5 days suitable for fieldwork.

Small Grains: Winter wheat seeding was underway in areas of the Plains, the Cross Timbers and the Edwards Plateau.

Row Crops: Cotton harvest was in full swing in the Blacklands, South Central Texas, the Upper Coast, South Texas and the Lower Valley. Bollworms were spotted in cotton fields in the Southern High Plains and flea hoppers were seen in the Northern Low Plains. Corn harvest started in areas of the Northern High Plains and was nearing completion in the Blacklands. Sugarcane aphids were very active in sorghum fields in the Northern High Plains. Rains slowed rice harvest in the Upper Coast.

Fruit, Vegetable and Specialty Crops: Vegetable planting was underway in the Lower Valley. Producers in South Texas were irrigating cantaloupes and watermelons. Pecan growers were concerned with insect populations in areas of the Trans-Pecos.

Livestock, Range and Pasture: Producers continued to provide supplemental feed to help herds maintain good body condition in dry areas however, hay supplies were scarce in areas of the Blacklands. Stock tanks remained at low levels in several areas of the state. Pasture and range condition was rated 67 percent poor to fair.

Crop Progress

Stage	Percent of Acreage			
	Current Week	Previous Week	Previous Year	5 Year Average
Corn				
Dented	90	88	86	81
Mature	68	61	66	64
Harvested	53	52	57	56
Cotton				
Setting Bolls	96	88	94	94
Bolls Opening	23	20	20	23
Harvested	11	9	15	8
Peanuts				
Mature	8	7	8	6
Rice				
Harvested	86	74	90	81
Sorghum				
Coloring	84	82	82	81
Mature	74	71	72	73
Harvested	65	62	61	58
Soybeans				
Setting Pods	90	85	95	90
Dropping Leaves	47	38	49	48
Harvested	28	10	26	26
Sunflowers				
Harvested	60	59	43	37

Crop Condition

Crop	Percent of Acreage					Index ¹	
	Excellent	Good	Fair	Poor	Very Poor	2018	2017
Corn	2	27	35	24	12	54	87
Cotton	5	16	26	28	25	44	75
Peanuts	1	54	41	4	0	75	82
Rice	5	44	50	1	0	75	84
Sorghum	5	18	39	26	12	52	85
Soybeans	10	7	62	14	7	58	81
Range and Pasture	1	13	33	34	19	--	--

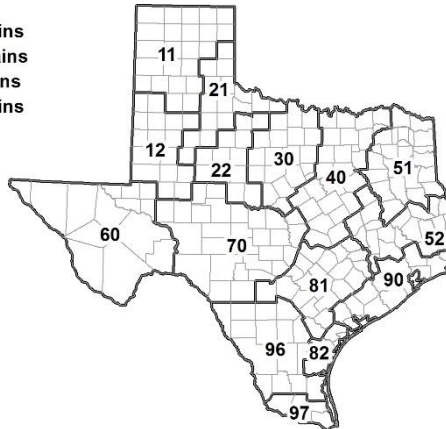
¹ The formula for the condition index is $I = (5V + 25P + 60F + 90G + 110E)/100$ where I = crop condition index and V, P, F, G, E = percentage of crop rated very poor, poor, fair, good, excellent.

Soil Moisture and Days Suitable by District

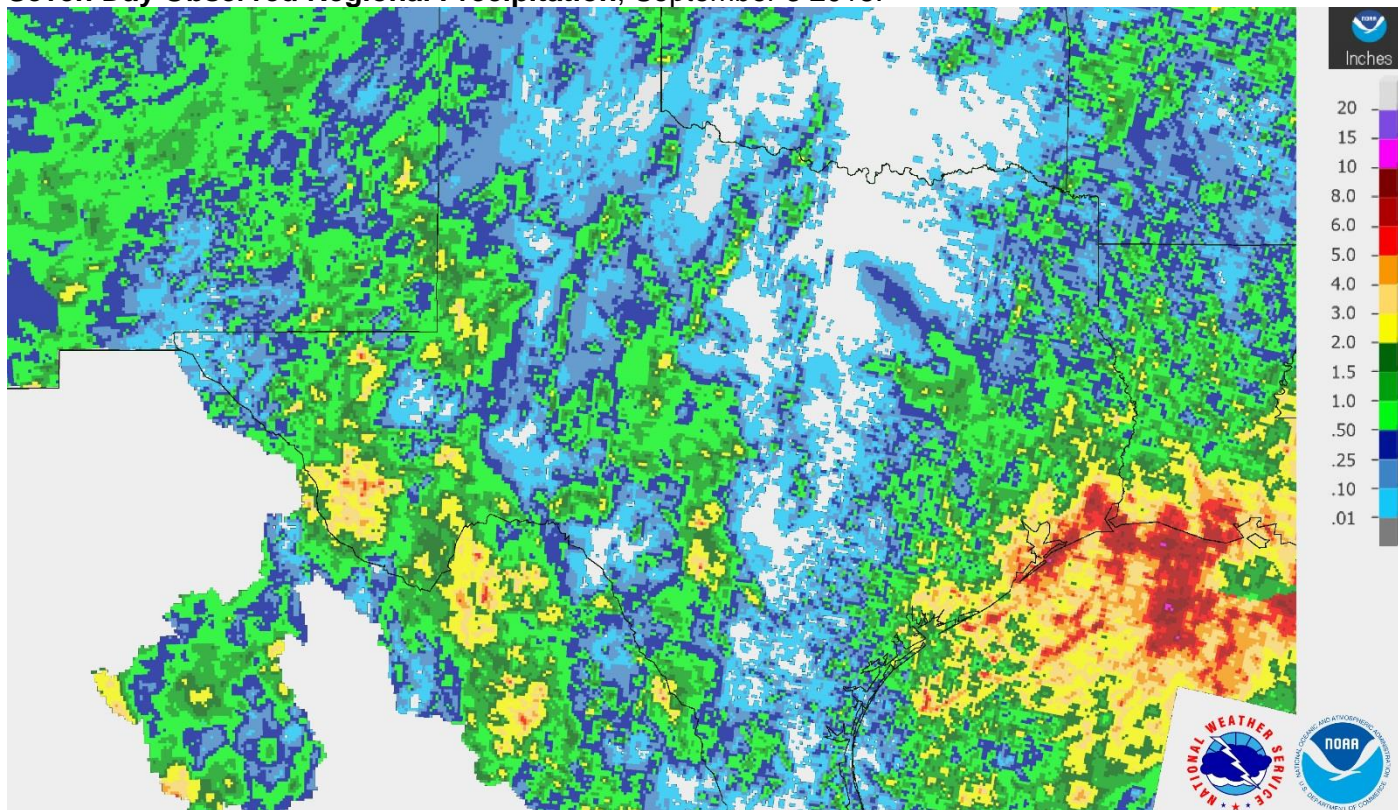
District	Topsoil Moisture Condition by District				Subsoil Moisture Condition by District				Days Suitable for Fieldwork
	Percentage of Acreage				Percentage of Acreage				
	Very Short	Short	Adequate	Surplus	Very Short	Short	Adequate	Surplus	
11	28	27	45	0	30	35	35	0	6.8
12	19	53	26	2	19	60	19	2	6.1
21	41	43	16	0	41	33	26	0	6.9
22	36	32	27	5	18	47	35	0	6.1
30	23	47	30	0	32	47	21	0	6.1
40	24	39	36	1	22	47	30	1	6.6
51	30	47	23	0	30	48	22	0	6.7
52	8	45	39	8	13	43	40	4	6.8
60	15	39	46	0	19	30	51	0	6.7
70	23	55	21	1	24	40	35	1	7.0
81	42	39	19	0	37	44	19	0	6.8
82	17	35	48	0	17	41	42	0	7.0
90	9	51	37	3	10	51	36	3	5.5
96	38	41	21	0	40	47	13	0	6.8
97	4	94	2	0	4	70	26	0	7.0
State	25	43	31	1	25	45	29	1	6.5

Texas Agricultural Districts

- 11 Northern High Plains
- 12 Southern High Plains
- 21 Northern Low Plains
- 22 Southern Low Plains
- 30 Cross Timbers
- 40 Blacklands
- 51 North East
- 52 South East
- 60 Trans-Pecos
- 70 Edwards Plateau
- 81 South Central
- 82 Coastal Bend
- 90 Upper Coast
- 96 South
- 97 Lower Valley

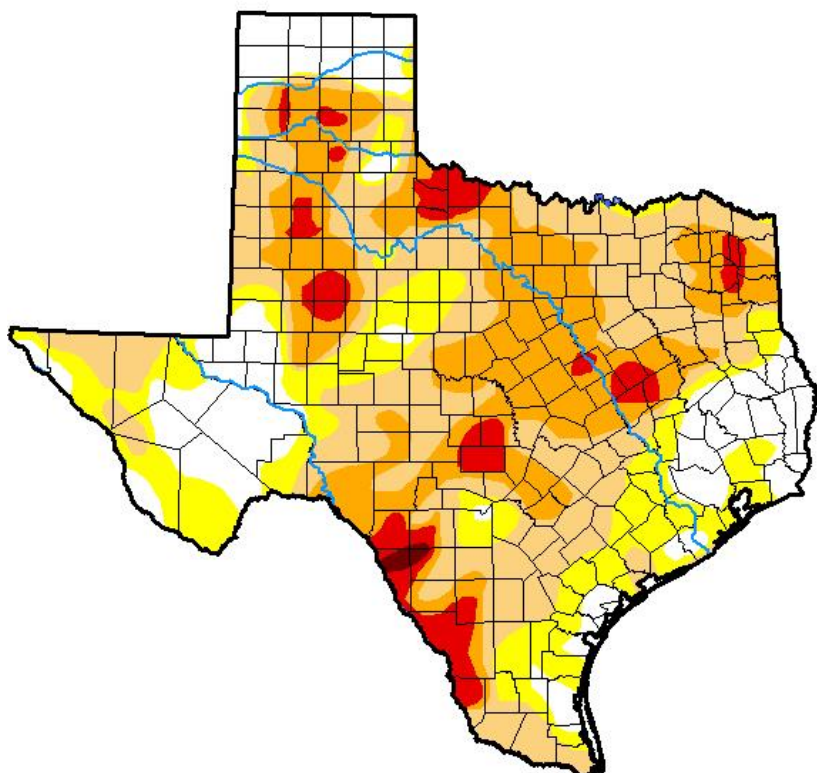


Seven Day Observed Regional Precipitation, September 3 2018.



Source: National Weather Service, www.nws.noaa.gov.

Drought Monitor, Valid August 28, 2018.



Drought Conditions (Percent Area)

	None	D0-D4	D1-D4	D2-D4	D3-D4	D4
Current	18.56	81.44	62.34	30.69	6.78	0.30
Last Week <i>08-21-2018</i>	18.99	81.01	59.88	28.00	5.22	0.30
3 Months Ago <i>05-29-2018</i>	31.26	68.74	40.06	21.93	7.82	1.17
Start of Calendar Year <i>01-02-2018</i>	33.37	66.63	33.56	5.94	0.11	0.00
Start of Water Year <i>09-26-2017</i>	70.54	29.46	4.17	0.04	0.00	0.00
One Year Ago <i>08-29-2017</i>	96.14	3.86	0.87	0.00	0.00	0.00

Intensity:

- D0 Abnormally Dry
- D1 Moderate Drought
- D2 Severe Drought
- D3 Extreme Drought
- D4 Exceptional Drought

The Drought Monitor focuses on broad-scale conditions. Local conditions may vary. See accompanying text summary for forecast statements.

Author:

Jessica Blunden
NCEI/NOAA



Source: National Drought Mitigation Center, a partnership with USDA, U.S. Department of Commerce/NOAA, <http://droughtmonitor.unl.edu>.

Texas Crop Progress and Condition (4 September 2018)

USDA, National Agricultural Statistics Service, Southern Plains Regional Field Office