



Texas Crop Progress and Condition

Southern Plains Regional Field Office
Post Office Box 70 Austin, Texas 78767
(800) 626-3142 · FAX (855) 270-2725 · www.nass.usda.gov/tx

Issue: TX-CW3118

Weekly Summary for September 17-23

Released: September 24, 2018

A cold front hit the state this past week, bringing between 2 and 8 inches of rain to the Blacklands. Precipitation in the rest of the state ranged from trace amounts up to 3 inches, with isolated areas in the Cross Timbers, East Texas, South East Texas and the Edwards Plateau getting upwards of 5 inches. There were 5.2 days suitable for fieldwork.

Small Grains: Winter wheat seeding continued in the Low Plains, while wheat producers in the Cross Timbers were waiting for dryer conditions to start seeding. Torrential rains in the Blacklands may necessitate re-seeding of small grain fields in areas with the highest impact from the heavy rainfall.

Row Crops: Cotton bolls were opening in the Northern High Plains and defoliation was taking place in the Southern Low Plains. Wet weather halted row crops harvest in many areas of the state. Headworm populations were nearing critical levels in sorghum fields in areas of the Northern High Plains.

Fruit, Vegetable and Specialty Crops: Some producers in South Central Texas had begun harvesting pecans, however, due to the late rains many varieties were experiencing damage from scab infestations. Producers in South Texas and the Lower Valley were waiting for more favorable conditions to continue planting spinach, cabbage, and other vegetables.

Livestock, Range and Pasture: Livestock and cattle were mostly in good body condition across the state. Very little feed supplementation was reported last week. Thanks to recent rains, stock tanks levels had improved in many parts of the state. Pasture and range condition was rated 69 percent fair to good. Increased armyworm activity was reported in pastures and small grain fields across many areas of the state.

Crop Progress

Stage	Percent of Acreage			
	Current Week	Previous Week	Previous Year	5 Year Average
Corn				
Mature	81	80	82	78
Harvested	67	66	68	65
Cotton				
Bolls Opening	45	37	43	46
Harvested	23	22	21	14
Peanuts				
Mature	22	19	19	19
Harvested	1	0	4	4
Rice				
Harvested	97	94	98	98
Sorghum				
Mature	82	80	77	79
Harvested	74	70	72	67
Soybeans				
Dropping Leaves	79	70	75	74
Harvested	52	45	50	49
Sunflowers				
Harvested	66	63	50	52
Winter Wheat				
Planted	30	13	30	27

Crop Condition

Crop	Percent of Acreage					Index ¹	
	Excellent	Good	Fair	Poor	Very Poor	2018	2017
Corn	2	27	35	24	12	54	87
Cotton	6	17	32	33	12	50	74
Peanuts	0	55	44	1	0	76	81
Rice	5	44	50	1	0	75	84
Sorghum	5	18	39	26	12	52	85
Soybeans	9	18	58	12	3	64	81
Range and Pasture	8	33	36	17	6	--	--

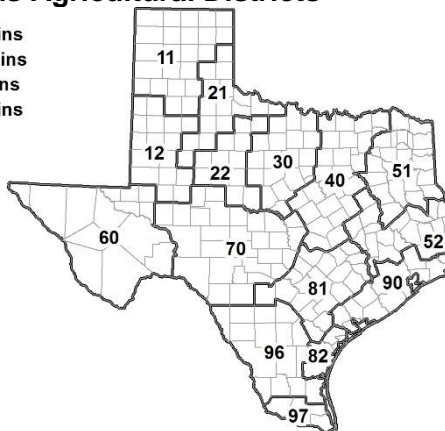
¹ The formula for the condition index is $I = (5V + 25P + 60F + 90G + 110E)/100$ where I = crop condition index and V, P, F, G, E = percentage of crop rated very poor, poor, fair, good, excellent.

Soil Moisture and Days Suitable by District

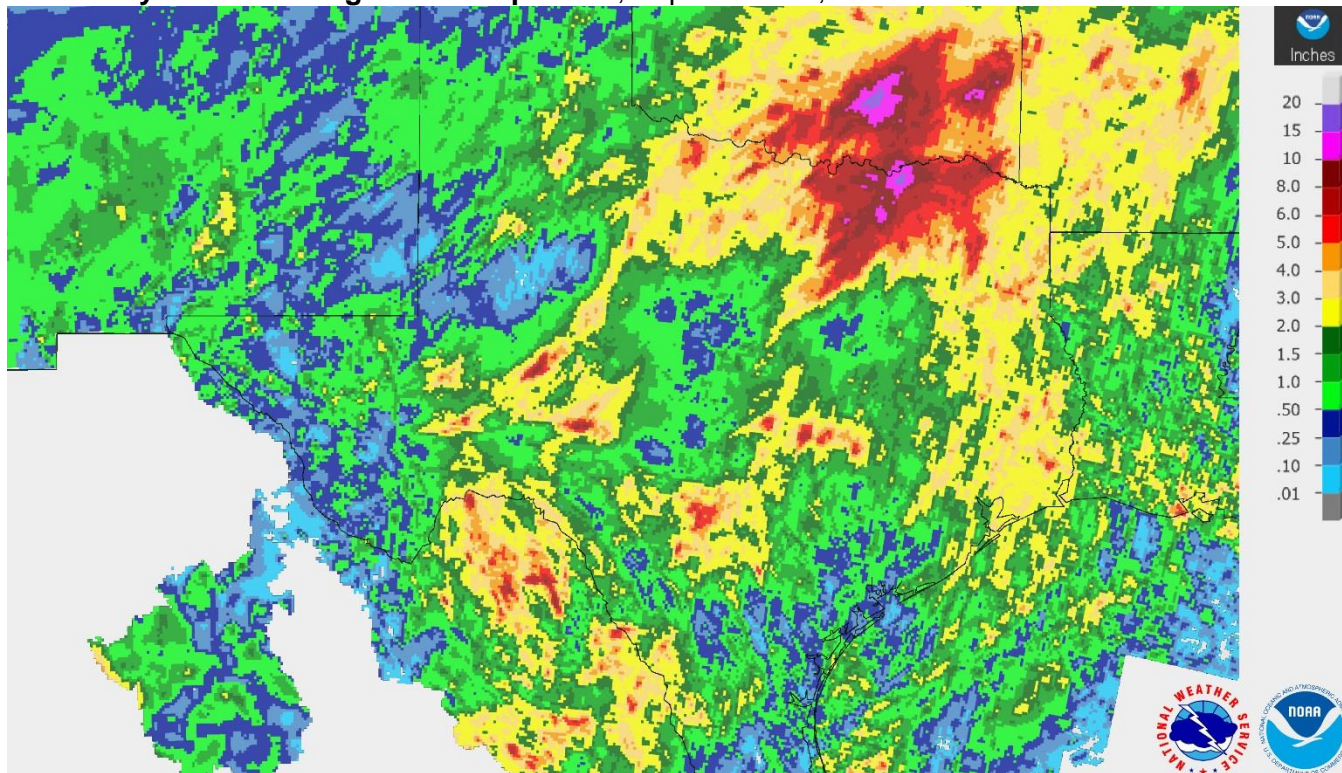
District	Topsoil Moisture Condition by District				Subsoil Moisture Condition by District				Days Suitable for Fieldwork
	Percentage of Acreage				Percentage of Acreage				
	Very Short	Short	Adequate	Surplus	Very Short	Short	Adequate	Surplus	
11	17	42	40	1	16	46	37	1	6.2
12	9	24	62	5	10	38	52	0	5.5
21	2	17	66	15	2	27	64	7	6.1
22	0	6	68	26	0	18	60	22	4.1
30	2	11	78	9	5	24	67	4	5.1
40	9	10	57	24	10	16	54	20	4.3
51	0	21	60	19	4	27	56	13	5.8
52	1	7	46	46	2	7	48	43	4.6
60	7	48	45	0	13	39	48	0	6.7
70	4	6	47	43	8	6	49	37	3.7
81	1	6	77	16	0	15	68	17	4.8
82	0	0	0	100	0	0	0	100	7.0
90	0	1	35	64	1	33	33	33	2.8
96	0	2	85	13	3	15	74	8	3.5
97	5	19	76	0	5	15	76	4	7.0
State	7	19	56	18	8	28	50	14	5.2

Texas Agricultural Districts

- 11 Northern High Plains
- 12 Southern High Plains
- 21 Northern Low Plains
- 22 Southern Low Plains
- 30 Cross Timbers
- 40 Blacklands
- 51 North East
- 52 South East
- 60 Trans-Pecos
- 70 Edwards Plateau
- 81 South Central
- 82 Coastal Bend
- 90 Upper Coast
- 96 South
- 97 Lower Valley

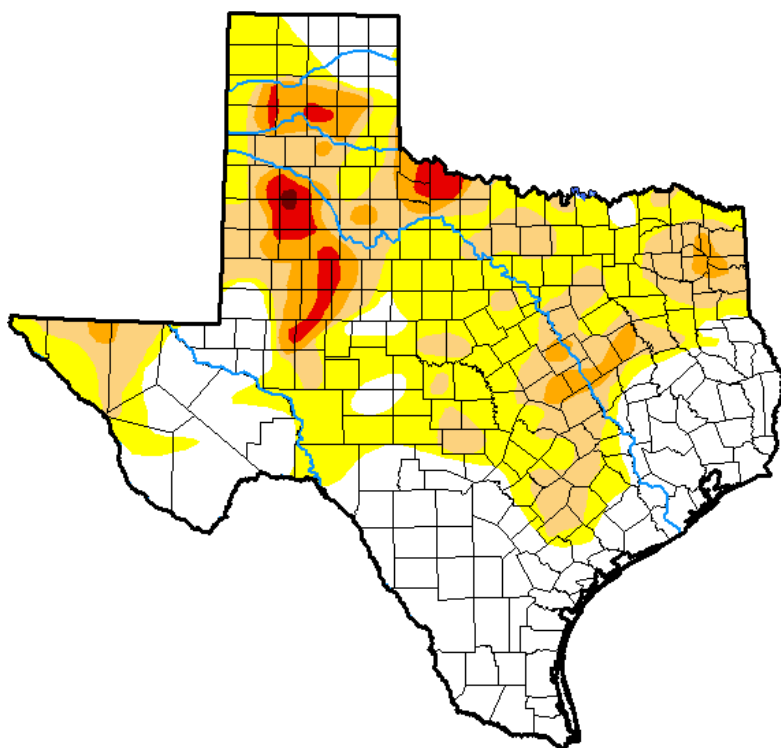


Seven Day Observed Regional Precipitation, September 23, 2018.



Source: National Weather Service, www.nws.noaa.gov.

Drought Monitor, Valid September 18, 2018.



Drought Conditions (Percent Area)

	None	D0-D4	D1-D4	D2-D4	D3-D4	D4
Current	39.87	60.13	28.85	9.26	2.43	0.10
Last Week <i>09-11-2018</i>	32.07	67.93	31.13	9.81	2.43	0.10
3 Months Ago <i>06-19-2018</i>	25.97	74.03	47.12	18.88	3.78	0.64
Start of Calendar Year <i>01-02-2018</i>	33.37	66.63	33.56	5.94	0.11	0.00
Start of Water Year <i>09-26-2017</i>	70.54	29.46	4.17	0.04	0.00	0.00
One Year Ago <i>09-19-2017</i>	79.27	20.73	3.27	0.35	0.00	0.00

Intensity:

- D0 Abnormally Dry
- D1 Moderate Drought
- D2 Severe Drought
- D3 Extreme Drought
- D4 Exceptional Drought

The Drought Monitor focuses on broad-scale conditions. Local conditions may vary. See accompanying text summary for forecast statements.

Author:

Jessica Blunden
NCEI/NOAA



Source: National Drought Mitigation Center, a partnership with USDA, U.S. Department of Commerce/NOAA, <http://droughtmonitor.unl.edu>.

Texas Crop Progress and Condition (24 September 2018)

USDA, National Agricultural Statistics Service, Southern Plains Regional Field Office