



# Texas Crop Progress and Condition

Southern Plains Regional Field Office  
Post Office Box 70 Austin, Texas 78767  
(800) 626-3142 · FAX (855) 270-2725 · [www.nass.usda.gov/tx](http://www.nass.usda.gov/tx)

**Issue: TX-CW3218**

**Weekly Summary for September 24-30**

**Released: October 1, 2018**

Mild temperatures were experienced across most of the state. Most of the precipitation was concentrated in the Gulf Coast where precipitation ranged from 0.5 to 3.0 inches, with isolated areas getting upwards of 6 inches. The Northern Low Plains, the Southern Plains, the Cross Timbers and areas of the Blacklands and North East Texas received between 0.5 and 1.0 inch of rain, while the rest of the state only received trace amounts. There were 5.0 days suitable for fieldwork.

**Small Grains:** Small grain seeding continued in areas of the Northern High Plains, the Edwards Plateau, South Central Texas and South Texas. Army worms damaged newly emerged wheat in several areas.

**Row Crops:** Some producers were harvesting cotton in the Blacklands and South Texas, while moisture levels were still too high to harvest in South East Texas, the Upper Coast and the Lower Valley. Bolls were opening in the Edwards Plateau and producers were applying defoliant in the Trans-Pecos and the Cross Timbers. Corn and soybean harvest continued in the Northern High Plains. Upper Coast rice harvest was stalled due to wet conditions.

**Fruit, Vegetable and Specialty Crops:** Harvest of early pecan varieties was underway in the Cross Timbers, and continued in the Edwards Plateau. Harvest of watermelons, cantaloupes, spinach and cabbage resumed in South Texas. Producers were planting vegetables in the Lower Valley.

**Livestock, Range and Pasture:** Livestock and cattle were mostly in good body condition across the state. Recent rainfalls have improved pasture conditions across the state, however, army worms continued to spread and cause damage to hay fields and pastures. Pasture and range condition was rated 71 percent fair to good.

### Crop Condition

Crop	Percent of Acreage					Index <sup>1</sup>	
	Excellent	Good	Fair	Poor	Very Poor	2018	2017
Corn	2	27	35	24	12	54	87
Cotton	6	22	34	28	10	54	70
Peanuts	1	54	44	1	0	76	83
Sorghum	5	18	39	26	12	52	85
Soybeans	9	18	58	12	3	64	76
Range and Pasture	10	37	34	14	5	--	--

<sup>1</sup> The formula for the condition index is  $I = (5V + 25P + 60F + 90G + 110E)/100$  where I = crop condition index and V, P, F, G, E = percentage of crop rated very poor, poor, fair, good, excellent.

### Crop Progress

Stage	Percent of Acreage			
	Current Week	Previous Week	Previous Year	5 Year Average
<b>Corn</b>				
Mature	85	81	88	83
Harvested	70	67	74	68
<b>Cotton</b>				
Bolls Opening	56	45	54	56
Harvested	25	23	22	17
<b>Peanuts</b>				
Mature	30	22	23	23
Harvested	4	1	5	8
<b>Sorghum</b>				
Mature	84	82	80	82
Harvested	76	74	73	70
<b>Soybeans</b>				
Dropping Leaves	80	79	83	80
Harvested	69	52	54	54
<b>Sunflowers</b>				
Harvested	67	66	54	57
<b>Winter Wheat</b>				
Planted	42	30	39	38
Emerged	4	N/A	13	14

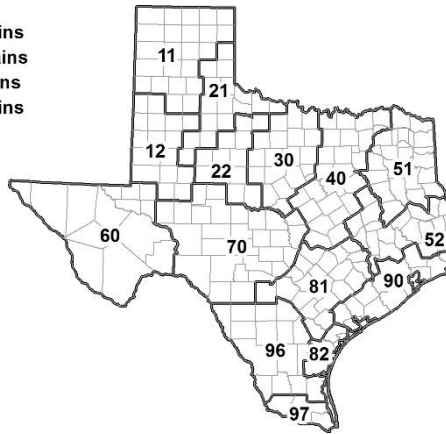
N/A Not available

**Soil Moisture and Days Suitable by District**

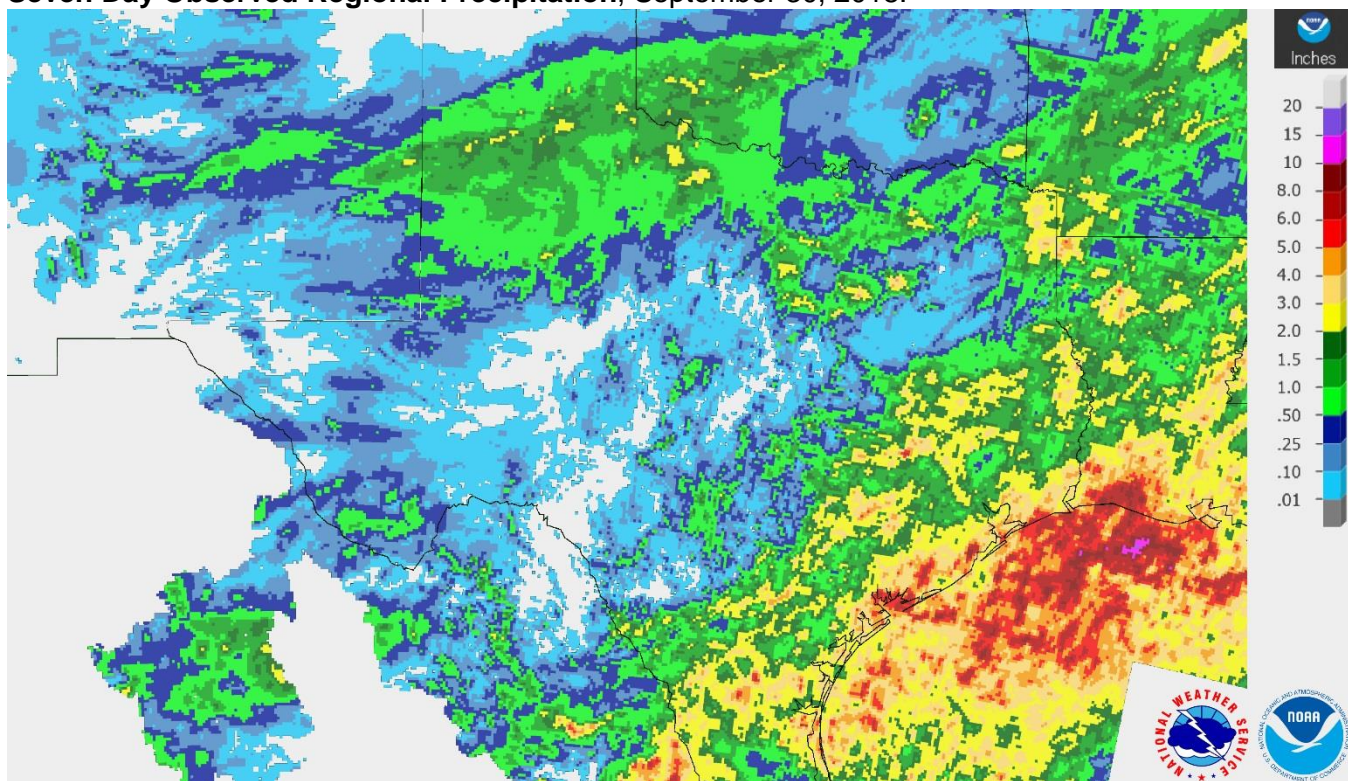
District	Topsoil Moisture Condition by District				Subsoil Moisture Condition by District				Days Suitable for Fieldwork
	Percentage of Acreage				Percentage of Acreage				
	Very Short	Short	Adequate	Surplus	Very Short	Short	Adequate	Surplus	
11	15	33	51	1	16	44	39	1	6.0
12	1	7	88	4	2	32	66	0	4.9
21	2	10	83	5	1	22	73	4	5.3
22	0	6	83	11	0	14	74	12	5.0
30	2	11	80	7	4	22	71	3	4.7
40	6	8	64	22	9	12	62	17	4.2
51	0	6	82	12	0	8	74	18	6.1
52	0	5	53	42	1	6	54	39	4.4
60	6	38	56	0	10	31	59	0	6.8
70	4	10	54	32	8	10	52	30	5.3
81	0	2	88	10	4	7	80	9	4.8
82	0	0	16	84	0	0	10	90	2.9
90	0	2	26	72	0	30	32	38	2.9
96	0	1	89	10	1	9	82	8	4.5
97	0	17	83	0	0	17	79	4	6.6
State	4	13	68	15	6	24	58	12	5.0

**Texas Agricultural Districts**

- 11 Northern High Plains
- 12 Southern High Plains
- 21 Northern Low Plains
- 22 Southern Low Plains
- 30 Cross Timbers
- 40 Blacklands
- 51 North East
- 52 South East
- 60 Trans-Pecos
- 70 Edwards Plateau
- 81 South Central
- 82 Coastal Bend
- 90 Upper Coast
- 96 South
- 97 Lower Valley

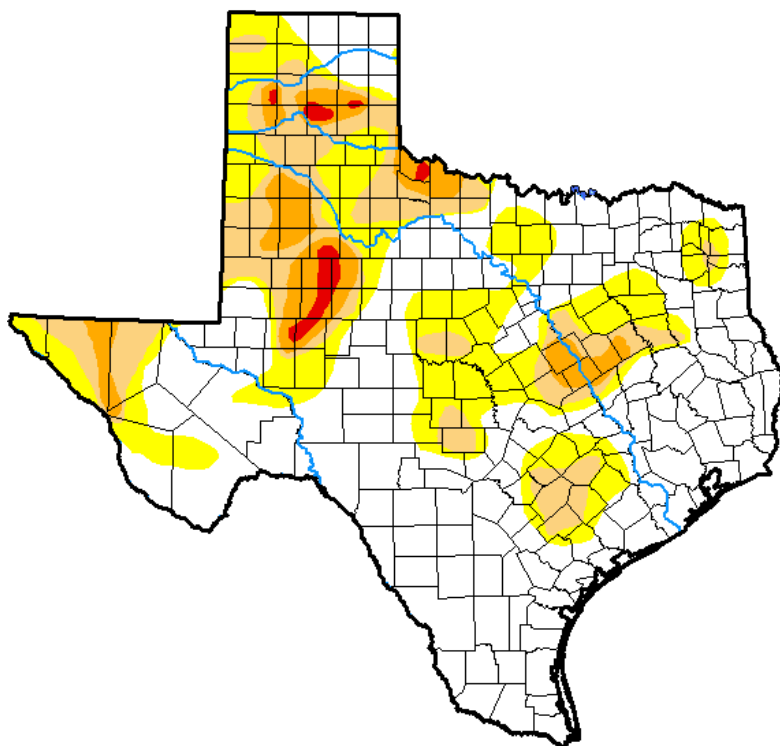


## Seven Day Observed Regional Precipitation, September 30, 2018.



Source: National Weather Service, [www.nws.noaa.gov](http://www.nws.noaa.gov).

## Drought Monitor, Valid September 25, 2018.



Drought Conditions (Percent Area)

	None	D0-D4	D1-D4	D2-D4	D3-D4	D4
<b>Current</b>	57.46	42.54	20.19	7.03	0.96	0.00
<b>Last Week</b> <i>09-18-2018</i>	39.87	60.13	28.85	9.26	2.43	0.10
<b>3 Months Ago</b> <i>06-26-2018</i>	27.33	72.67	47.80	17.91	5.07	0.00
<b>Start of Calendar Year</b> <i>01-02-2018</i>	33.37	66.63	33.56	5.94	0.11	0.00
<b>Start of Water Year</b> <i>09-26-2017</i>	70.54	29.46	4.17	0.04	0.00	0.00
<b>One Year Ago</b> <i>09-26-2017</i>	70.54	29.46	4.17	0.04	0.00	0.00

**Intensity:**

- D0 Abnormally Dry
- D1 Moderate Drought
- D2 Severe Drought
- D3 Extreme Drought
- D4 Exceptional Drought

The Drought Monitor focuses on broad-scale conditions. Local conditions may vary. See accompanying text summary for forecast statements.

**Author:**

Jessica Blunden  
NCEI/NOAA



Source: National Drought Mitigation Center, a partnership with USDA, U.S. Department of Commerce/NOAA, <http://droughtmonitor.unl.edu>.

## Texas Crop Progress and Condition (1 October 2018)

USDA, National Agricultural Statistics Service, Southern Plains Regional Field Office