



## Texas Crop Progress and Condition

Southern Plains Regional Field Office  
Post Office Box 70 Austin, Texas 78767  
(800) 626-3142 · FAX (855) 270-2725 · [www.nass.usda.gov/tx](http://www.nass.usda.gov/tx)

**Issue: TX-CW3318**

**Weekly Summary for October 1- 7**

**Released: October 9, 2018**

Warmer average temperatures were experienced across the state this week. Precipitation in the Plains, the Cross Timbers, the Edwards Plateau and the Trans-Pecos ranged from 0.5 to 5 inches. Rainfall through the remainder of the state ranged from trace amounts to 2 inches. There were 5.4 days suitable for fieldwork.

**Small Grains:** Small grain seeding was underway in the Northern Plains, the Southern Low Plains, the Cross Timbers, the Blacklands, South Central Texas, South Texas and areas of the Edwards Plateau, where moisture allowed. Armyworms continued to cause problems in many areas of the state.

**Row Crops:** Cotton harvest was ongoing in the Cross Timbers, the Blacklands, the Edwards Plateau, the Upper Coast and South Texas. A second defoliation might be needed in South Texas after fields began to green up following the heavy rains. Corn, soybean and sorghum harvest continued in the Northern Low Plains. Rice harvest resumed in the Upper Coast.

**Fruit, Vegetable and Specialty Crops:** Pecan producers in the Trans-Pecos and the Edwards Plateau applied water for the last time in the season, while pecan harvest was underway in South Central Texas. Spinach, cabbage, onion and carrot planting was ongoing in South Texas. Winter vegetable harvest was active in the Lower Valley.

**Livestock, Range and Pasture:** Most livestock and cattle remained in good body condition across the state. A small lice outbreak was reported in the Northern Low Plains. Pasture and range condition continued improving and was rated 72 percent good to fair.

### Crop Condition

Crop	Percent of Acreage					Index <sup>1</sup>	
	Excellent	Good	Fair	Poor	Very Poor	2018	2017
Corn	2	27	35	24	12	54	87
Cotton	6	22	34	28	10	54	72
Peanuts	1	48	45	6	0	73	82
Sorghum	5	18	39	26	12	52	85
Soybeans	9	18	58	12	3	64	76
Range and Pasture	14	40	32	11	3	--	--

<sup>1</sup> The formula for the condition index is  $I = (5V + 25P + 60F + 90G + 110E)/100$  where I = crop condition index and V, P, F, G, E = percentage of crop rated very poor, poor, fair, good, excellent.

### Crop Progress

Stage	Percent of Acreage			
	Current Week	Previous Week	Previous Year	5 Year Average
<b>Corn</b>				
Mature	87	85	91	87
Harvested	72	70	76	71
<b>Cotton</b>				
Bolls Opening	70	56	59	65
Harvested	28	25	26	20
<b>Peanuts</b>				
Mature	35	30	(NA)	(NA)
Harvested	9	4	11	15
<b>Sorghum</b>				
Mature	85	84	82	85
Harvested	77	76	74	72
<b>Soybeans</b>				
Dropping Leaves	84	80	88	85
Harvested	70	69	64	61
<b>Sunflowers</b>				
Harvested	68	67	58	61
<b>Winter Wheat</b>				
Planted	54	42	52	49
Emerged	20	4	28	25

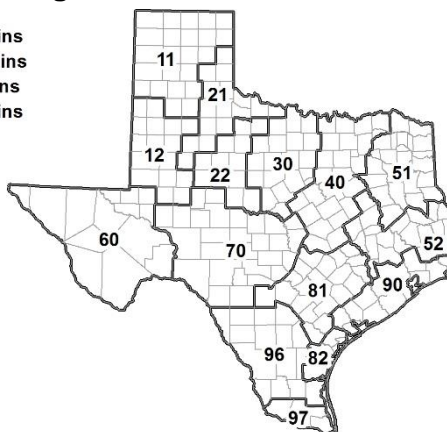
(NA) Not available.

### Soil Moisture and Days Suitable by District

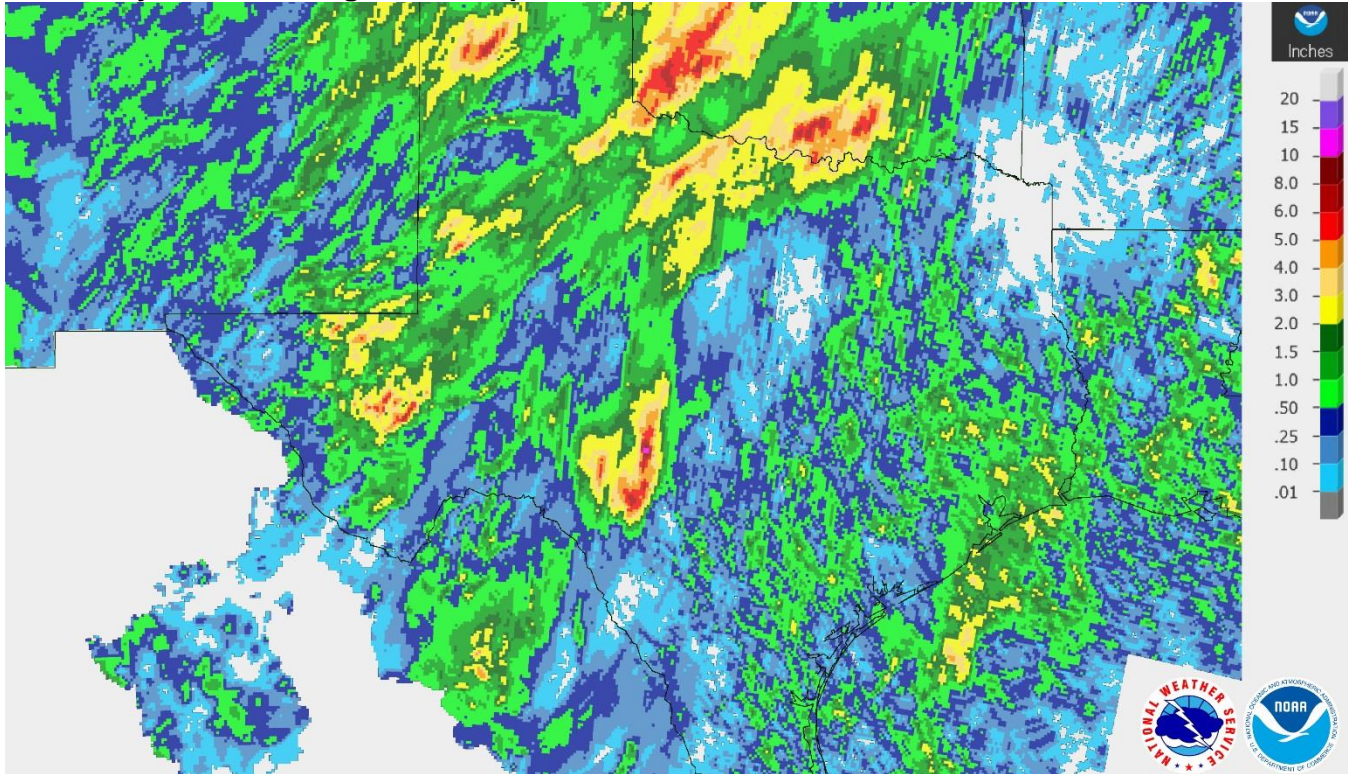
District	Topsoil Moisture Condition by District				Subsoil Moisture Condition by District				Days Suitable for Fieldwork
	Percentage of Acreage				Percentage of Acreage				
	Very Short	Short	Adequate	Surplus	Very Short	Short	Adequate	Surplus	
11	13	24	52	11	12	33	54	1	5.8
12	1	14	78	7	4	27	65	4	5.3
21	1	7	90	2	0	18	80	2	6.2
22	0	3	73	24	0	5	77	18	5.2
30	3	14	74	9	4	27	67	2	6.0
40	3	5	73	19	3	7	76	14	4.6
51	1	14	73	12	1	18	71	10	6.6
52	0	8	53	39	1	8	55	36	4.8
60	6	34	60	0	10	27	63	0	6.8
70	2	9	68	21	5	9	66	20	6.3
81	0	2	90	8	2	5	87	6	4.8
82	0	0	39	61	0	0	35	65	4.7
90	0	2	30	68	0	34	33	33	3.0
96	0	6	89	5	1	8	86	5	5.8
97	0	17	83	0	0	17	83	0	7.0
State	4	12	68	16	4	20	66	10	5.4

### Texas Agricultural Districts

- 11 Northern High Plains
- 12 Southern High Plains
- 21 Northern Low Plains
- 22 Southern Low Plains
- 30 Cross Timbers
- 40 Blacklands
- 51 North East
- 52 South East
- 60 Trans-Pecos
- 70 Edwards Plateau
- 81 South Central
- 82 Coastal Bend
- 90 Upper Coast
- 96 South
- 97 Lower Valley

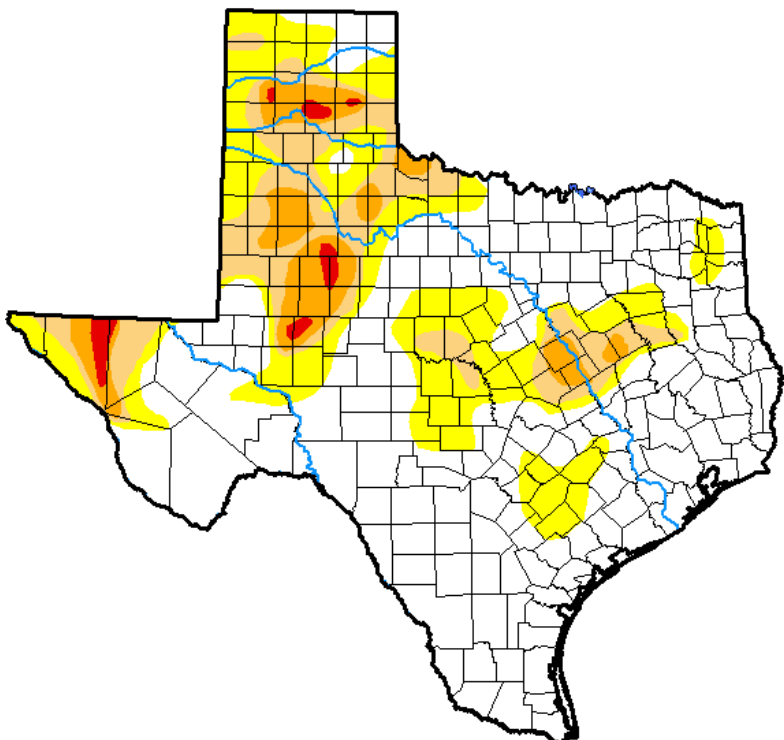


**Seven Day Observed Regional Precipitation, October 8, 2018.**



Source: National Weather Service, [www.nws.noaa.gov](http://www.nws.noaa.gov).

**Drought Monitor, Valid October 2, 2018.**



*Drought Conditions (Percent Area)*

	None	D0-D4	D1-D4	D2-D4	D3-D4	D4
<b>Current</b>	61.59	38.41	18.01	7.04	1.04	0.00
<b>Last Week</b> <i>09-25-2018</i>	57.46	42.54	20.19	7.03	0.96	0.00
<b>3 Months Ago</b> <i>07-03-2018</i>	17.38	82.62	55.30	24.06	6.84	0.46
<b>Start of Calendar Year</b> <i>01-02-2018</i>	33.37	66.63	33.56	5.94	0.11	0.00
<b>Start of Water Year</b> <i>09-25-2018</i>	57.46	42.54	20.19	7.03	0.96	0.00
<b>One Year Ago</b> <i>10-03-2017</i>	86.76	13.24	2.20	0.00	0.00	0.00

Intensity:

- D0 Abnormally Dry
- D1 Moderate Drought
- D2 Severe Drought
- D3 Extreme Drought
- D4 Exceptional Drought

*The Drought Monitor focuses on broad-scale conditions. Local conditions may vary. See accompanying text summary for forecast statements.*

Author:

David Miskus  
NOAA/NWS/NCEP/CPC



Source: National Drought Mitigation Center, a partnership with USDA, U.S. Department of Commerce/NOAA, <http://droughtmonitor.unl.edu>.

**Texas Crop Progress and Condition (9 October 2018)**

USDA, National Agricultural Statistics Service, Southern Plains Regional Field Office