



Texas Crop Progress and Condition

Southern Plains Regional Field Office
Post Office Box 70 Austin, Texas 78767
(800) 626-3142 · FAX (855) 270-2725 · www.nass.usda.gov/tx

Issue: TX-CW3418

Weekly Summary for October 8 - 14

Released: October 15, 2018

Late in the week a cold front hit Texas, bringing below freezing temperatures to areas of the Northern High Plains. Precipitation levels varied across the state. The highest rainfall totals were reported in East Texas, the Blacklands, the Cross Timbers, South Central Texas and the Edwards Plateau, ranging between 2 and 8 inches, with isolated areas reporting upwards of 10 inches. There were 4.0 days suitable for fieldwork.

Small Grains: Recent rains delayed winter wheat seedings in many parts of the state. Early planted small grains were progressing very well in the Southern High Plains. Armyworms continued to be an issue across the state.

Row Crops: Cool weather in the Northern High Plains had cotton producers concerned with a possible drop in lint quality. Cotton harvest was ongoing in areas of South Texas and the Upper Coast, but remained stalled in many other areas of the state due to excess rainfall. Peanut harvest progressed in South Texas.

Fruit, Vegetable and Specialty Crops: Walnut caterpillar infestations were affecting pecans in the Cross Timbers, while harvest had been halted by the weather. Pecan harvest was underway in the Trans-Pecos, South Central Texas and South Texas. Spinach, cabbage and onion planting continued, while watermelon and cantaloupe harvest neared completion in South Texas. Sugarcane and citrus harvest was underway in the Lower Valley.

Livestock, Range and Pasture: Most livestock and cattle remained in good body condition across the state. Ranchers began treating livestock for stomach worms in the Edwards Plateau. Pasture and range condition improved and was rated 73 percent good to fair.

Crop Condition

| Crop | Percent of Acreage | | | | | Index ¹ | |
|-------------------|--------------------|------|------|------|-----------|--------------------|------|
| | Excellent | Good | Fair | Poor | Very Poor | 2018 | 2017 |
| Corn | 2 | 27 | 35 | 24 | 12 | 54 | 87 |
| Cotton | 2 | 25 | 36 | 26 | 11 | 53 | 73 |
| Peanuts | 1 | 55 | 43 | 1 | 0 | 77 | 79 |
| Sorghum | 5 | 18 | 39 | 26 | 12 | 52 | 85 |
| Soybeans | 9 | 18 | 58 | 12 | 3 | 64 | 76 |
| Range and Pasture | 15 | 44 | 29 | 9 | 3 | -- | -- |

¹ The formula for the condition index is $I = (5V + 25P + 60F + 90G + 110E)/100$ where I = crop condition index and V, P, F, G, E = percentage of crop rated very poor, poor, fair, good, excellent.

Crop Progress

| Stage | Percent of Acreage | | | |
|---------------------|--------------------|---------------|---------------|----------------|
| | Current Week | Previous Week | Previous Year | 5 Year Average |
| Corn | | | | |
| Mature | 91 | 87 | 94 | 90 |
| Harvested | 76 | 72 | 79 | 75 |
| Cotton | | | | |
| Bolls Opening | 79 | 70 | 71 | 75 |
| Harvested | 30 | 28 | 30 | 22 |
| Peanuts | | | | |
| Harvested | 50 | 35 | 44 | 42 |
| Harvested | 14 | 9 | 15 | 24 |
| Sorghum | | | | |
| Mature | 88 | 85 | 88 | 88 |
| Harvested | 80 | 77 | 78 | 74 |
| Soybeans | | | | |
| Dropping Leaves | 89 | 84 | 90 | 89 |
| Harvested | 72 | 70 | 69 | 68 |
| Sunflowers | | | | |
| Harvested | 70 | 68 | 64 | 66 |
| Winter Wheat | | | | |
| Planted | 60 | 54 | 64 | 61 |
| Emerged | 35 | 20 | 34 | 34 |
| Oats | | | | |
| Planted | 52 | (NA) | 53 | 51 |
| Emerged | 25 | (NA) | 23 | 20 |

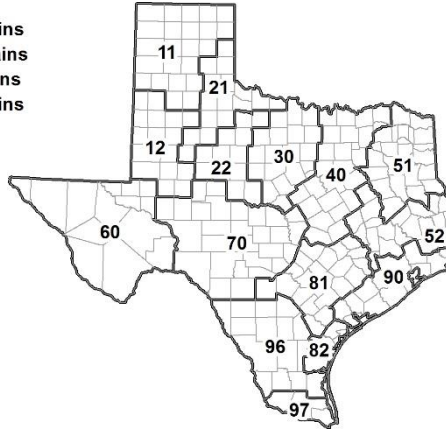
(NA) Not available.

Soil Moisture and Days Suitable by District

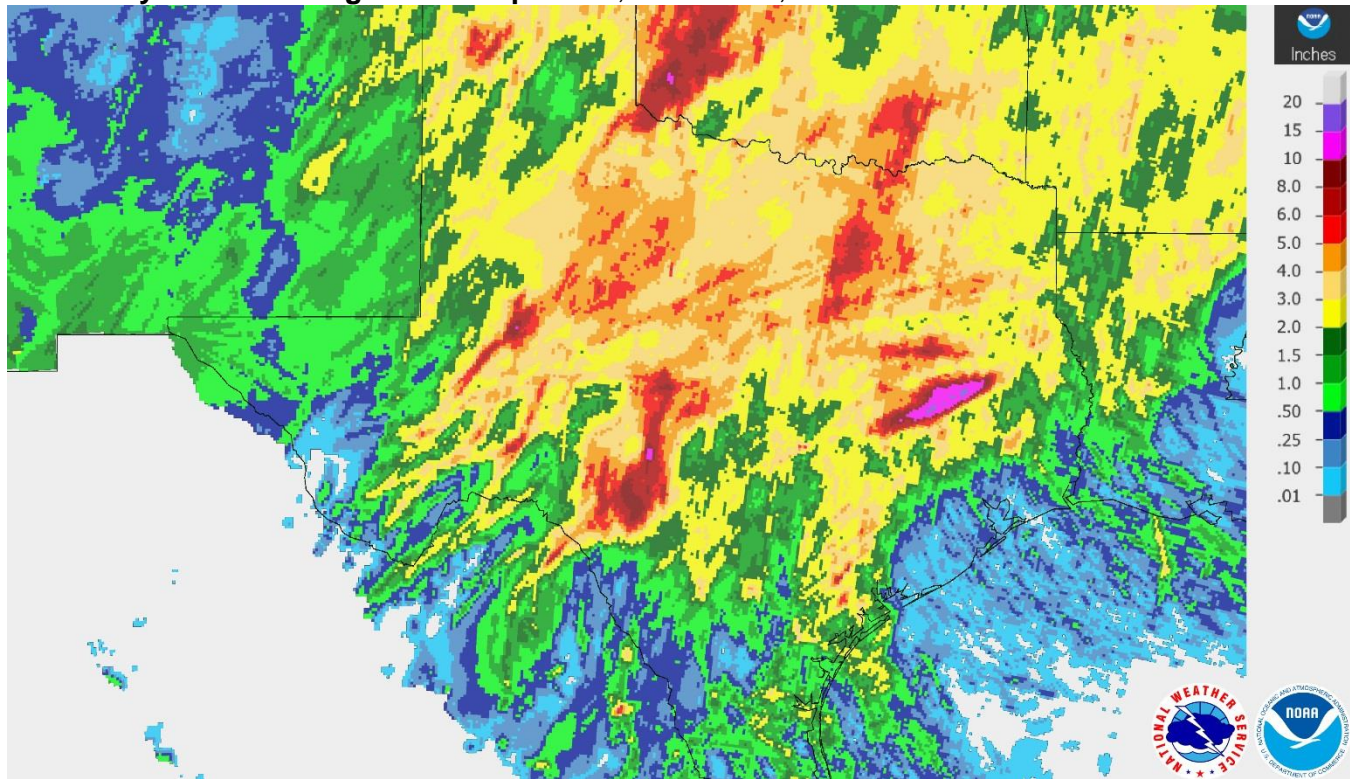
| District | Topsoil Moisture Condition by District | | | | Subsoil Moisture Condition by District | | | | Days Suitable for Fieldwork |
|----------|--|-------|----------|---------|--|-------|----------|---------|-----------------------------|
| | Percentage of Acreage | | | | Percentage of Acreage | | | | |
| | Very Short | Short | Adequate | Surplus | Very Short | Short | Adequate | Surplus | |
| 11 | 0 | 13 | 68 | 19 | 1 | 24 | 71 | 4 | 3.3 |
| 12 | 0 | 0 | 76 | 24 | 0 | 25 | 75 | 0 | 3.9 |
| 21 | 0 | 2 | 92 | 6 | 0 | 6 | 89 | 5 | 4.0 |
| 22 | 0 | 3 | 43 | 54 | 0 | 3 | 51 | 46 | 2.0 |
| 30 | 0 | 5 | 73 | 22 | 0 | 8 | 74 | 18 | 3.3 |
| 40 | 1 | 3 | 48 | 48 | 0 | 3 | 49 | 48 | 3.2 |
| 51 | 0 | 10 | 66 | 24 | 0 | 11 | 68 | 21 | 6.1 |
| 52 | 0 | 5 | 49 | 46 | 1 | 6 | 55 | 38 | 5.8 |
| 60 | 5 | 35 | 60 | 0 | 10 | 27 | 63 | 0 | 6.3 |
| 70 | 0 | 5 | 70 | 25 | 3 | 6 | 67 | 24 | 4.3 |
| 81 | 0 | 1 | 86 | 13 | 4 | 3 | 85 | 8 | 3.8 |
| 82 | 0 | 0 | 37 | 63 | 0 | 0 | 46 | 54 | 3.8 |
| 90 | 0 | 2 | 27 | 71 | 0 | 1 | 66 | 33 | 5.8 |
| 96 | 0 | 9 | 74 | 17 | 0 | 10 | 82 | 8 | 5.1 |
| 97 | 0 | 8 | 92 | 0 | 0 | 5 | 95 | 0 | 7.0 |
| State | 0 | 6 | 65 | 29 | 1 | 12 | 69 | 18 | 4.0 |

Texas Agricultural Districts

- 11 Northern High Plains
- 12 Southern High Plains
- 21 Northern Low Plains
- 22 Southern Low Plains
- 30 Cross Timbers
- 40 Blacklands
- 51 North East
- 52 South East
- 60 Trans-Pecos
- 70 Edwards Plateau
- 81 South Central
- 82 Coastal Bend
- 90 Upper Coast
- 96 South
- 97 Lower Valley

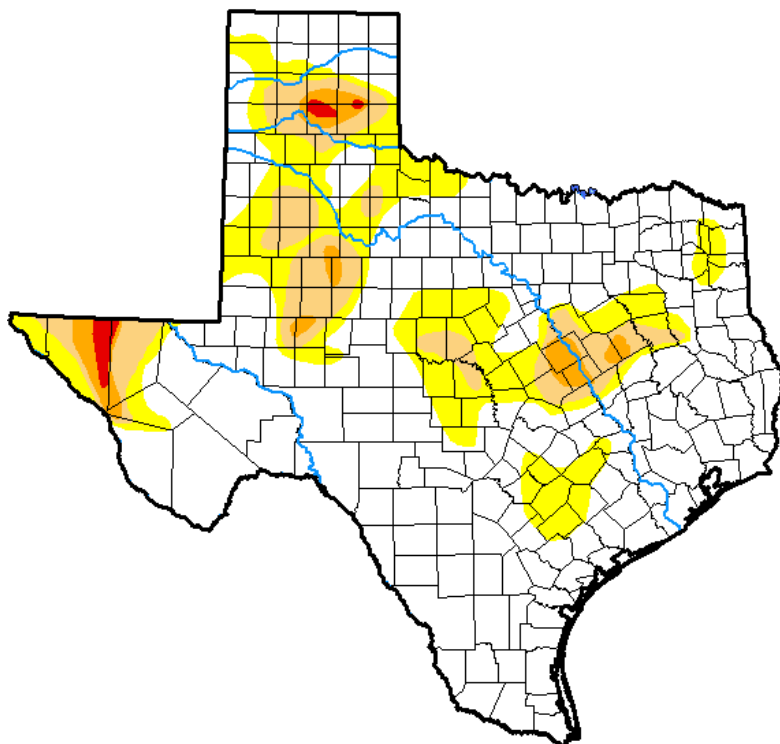


Seven Day Observed Regional Precipitation, October 14, 2018.



Source: National Weather Service, www.nws.noaa.gov.

Drought Monitor, Valid October 9, 2018.



Drought Conditions (Percent Area)

| | None | D0-D4 | D1-D4 | D2-D4 | D3-D4 | D4 |
|--|-------|-------|-------|-------|-------|------|
| Current | 69.42 | 30.58 | 11.67 | 3.04 | 0.59 | 0.00 |
| Last Week <i>10-02-2018</i> | 61.59 | 38.41 | 18.01 | 7.04 | 1.04 | 0.00 |
| 3 Months Ago <i>07-10-2018</i> | 24.87 | 75.13 | 49.41 | 19.07 | 4.95 | 0.00 |
| Start of Calendar Year <i>01-02-2018</i> | 33.37 | 66.63 | 33.56 | 5.94 | 0.11 | 0.00 |
| Start of Water Year <i>09-25-2018</i> | 57.46 | 42.54 | 20.19 | 7.03 | 0.96 | 0.00 |
| One Year Ago <i>10-10-2017</i> | 87.34 | 12.66 | 3.31 | 0.00 | 0.00 | 0.00 |

Intensity:

- D0 Abnormally Dry
- D1 Moderate Drought
- D2 Severe Drought
- D3 Extreme Drought
- D4 Exceptional Drought

The Drought Monitor focuses on broad-scale conditions. Local conditions may vary. See accompanying text summary for forecast statements.

Author:

Richard Tinker
CPC/NOAA/NWS/NCEP



Source: National Drought Mitigation Center, a partnership with USDA, U.S. Department of Commerce/NOAA, <http://droughtmonitor.unl.edu>.