



United States Department of Agriculture
National Agricultural Statistics Service



Texas Crop Progress and Condition

Southern Plains Regional Field Office
Post Office Box 70 Austin, Texas 78767
(800) 626-3142 · FAX (855) 270-2725 · www.nass.usda.gov/tx

Issue: TX-CW3518

Weekly Summary for October 15-21

Released: October 22, 2018

Cool and wet weather was experienced across the state. Freezing temperatures were reported in the Northern High Plains. Rainfall received in areas of the Edwards Plateau, South Central Texas, the Blacklands and East Texas, ranged between 3 and 8 inches. The rest of the state received between 0.5 and 3 inches of rain. There were 2.5 days suitable for fieldwork.

Small Grains: Wet conditions across many areas of the state kept small grains producers from seeding remaining fields. Producers in areas of the Low Plains, the Cross Timbers and the Blacklands considered replanting winter wheat due to excess moisture.

Row Crops: Cotton conditions in the High Plains were declining. Producers across the state were waiting for dryer conditions to begin harvest. Peanut harvest in the Northern Low Plains and the Cross Timbers, as well as soybean harvest in the Blacklands have been halted due to the rainy conditions.

Fruit, Vegetable and Specialty Crops: Lack of accessibility and fungi pressure threatened late season vegetable production in the Edwards Plateau. Planting of vegetables continued in South Texas and the Lower Valley where weather conditions allowed. Sugarcane and citrus harvest was underway in the Lower Valley.

Livestock, Range and Pasture: Cold and wet weather decreased health conditions of cattle in the Northern Low Plains and the Cross Timbers. Parasites were reported in the Edwards Plateau. Pasture and range condition was rated 73 percent good to fair.

Crop Condition

Crop	Percent of Acreage					Index ¹	
	Excellent	Good	Fair	Poor	Very Poor	2018	2017
Corn	2	27	35	24	12	54	87
Cotton	6	20	33	25	16	51	70
Peanuts	1	62	36	1	0	79	80
Sorghum	5	18	39	26	12	52	85
Soybeans	9	18	58	12	3	64	76
Winter Wheat	8	36	31	16	9	64	69
Range and Pasture	14	44	29	10	3	--	--

¹ The formula for the condition index is $I = (5V + 25P + 60F + 90G + 110E)/100$ where I = crop condition index and V, P, F, G, E = percentage of crop rated very poor, poor, fair, good, excellent.

Crop Progress

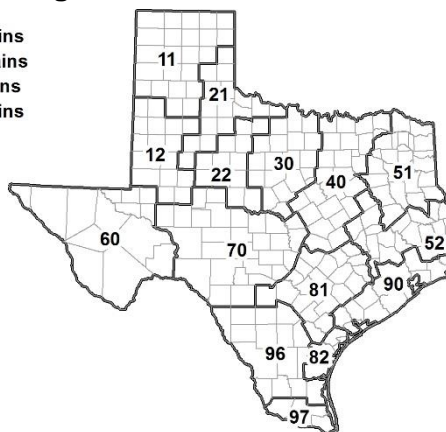
Stage	Percent of Acreage			
	Current Week	Previous Week	Previous Year	5 Year Average
Corn				
Mature	95	91	98	95
Harvested	79	76	83	79
Cotton				
Bolls Opening	83	79	79	84
Harvested	35	30	31	26
Peanuts				
Mature	54	50	49	47
Harvested	21	14	28	36
Sorghum				
Mature	91	88	92	91
Harvested	82	80	80	77
Soybeans				
Dropping Leaves	93	89	91	93
Harvested	79	72	81	75
Sunflowers				
Harvested	72	70	68	70
Winter Wheat				
Planted	63	60	69	69
Emerged	45	35	50	45
Oats				
Planted	64	52	72	66
Emerged	45	25	46	32

Soil Moisture and Days Suitable by District

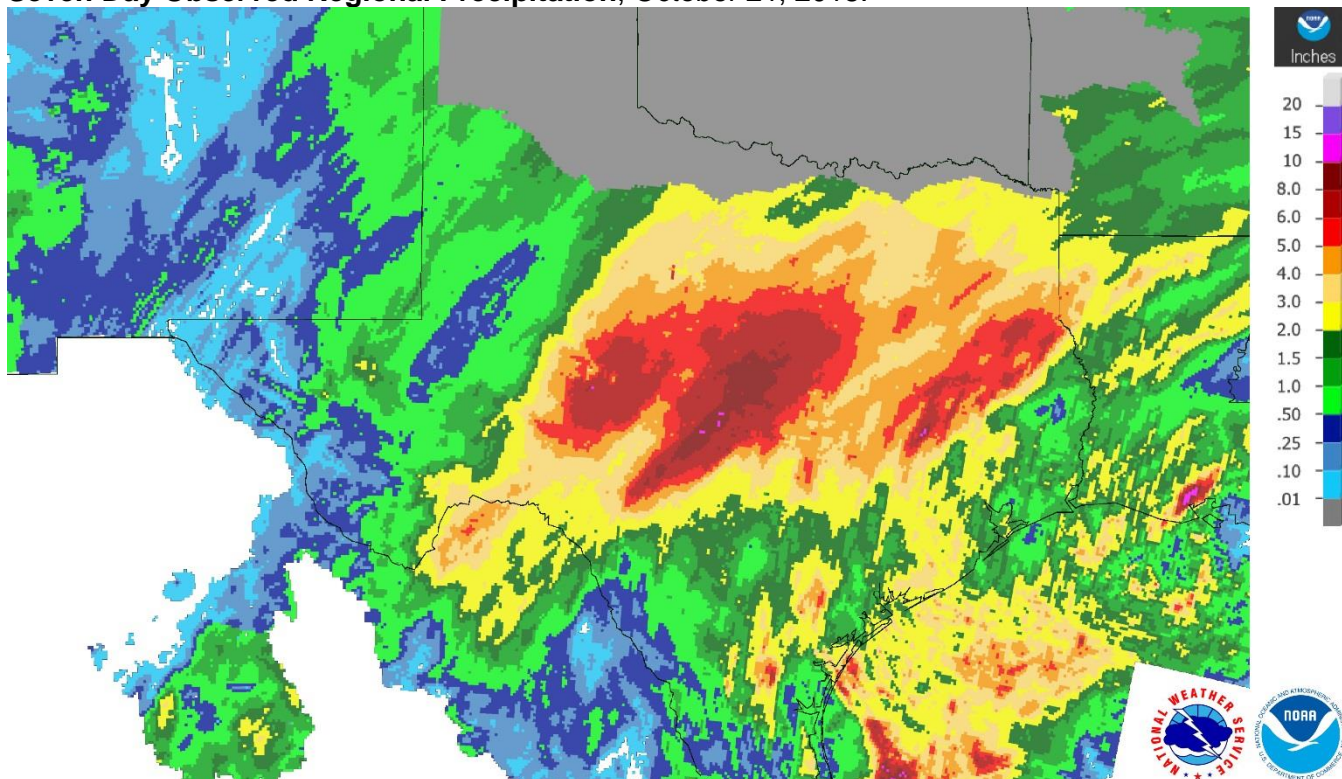
District	Topsoil Moisture Condition by District				Subsoil Moisture Condition by District				Days Suitable for Fieldwork
	Percentage of Acreage				Percentage of Acreage				
	Very Short	Short	Adequate	Surplus	Very Short	Short	Adequate	Surplus	
11	0	6	74	20	0	11	85	4	3.1
12	0	2	50	48	0	5	80	15	2.1
21	0	0	76	24	0	3	77	20	1.5
22	0	0	34	66	0	0	57	43	2.5
30	0	0	45	55	0	1	57	42	0.7
40	0	1	38	61	1	2	36	61	0.6
51	0	2	48	50	0	2	50	48	3.8
52	0	1	44	55	0	1	46	53	3.3
60	6	41	53	0	12	35	53	0	5.0
70	0	1	51	48	0	2	43	55	2.0
81	0	4	46	50	5	7	58	30	3.7
82	0	0	32	68	0	0	14	86	0.7
90	0	2	28	70	0	1	62	37	2.7
96	0	1	58	41	0	3	76	21	2.8
97	0	4	96	0	0	13	87	0	7.0
State	0	3	53	44	1	5	65	29	2.5

Texas Agricultural Districts

- 11 Northern High Plains
- 12 Southern High Plains
- 21 Northern Low Plains
- 22 Southern Low Plains
- 30 Cross Timbers
- 40 Blacklands
- 51 North East
- 52 South East
- 60 Trans-Pecos
- 70 Edwards Plateau
- 81 South Central
- 82 Coastal Bend
- 90 Upper Coast
- 96 South
- 97 Lower Valley

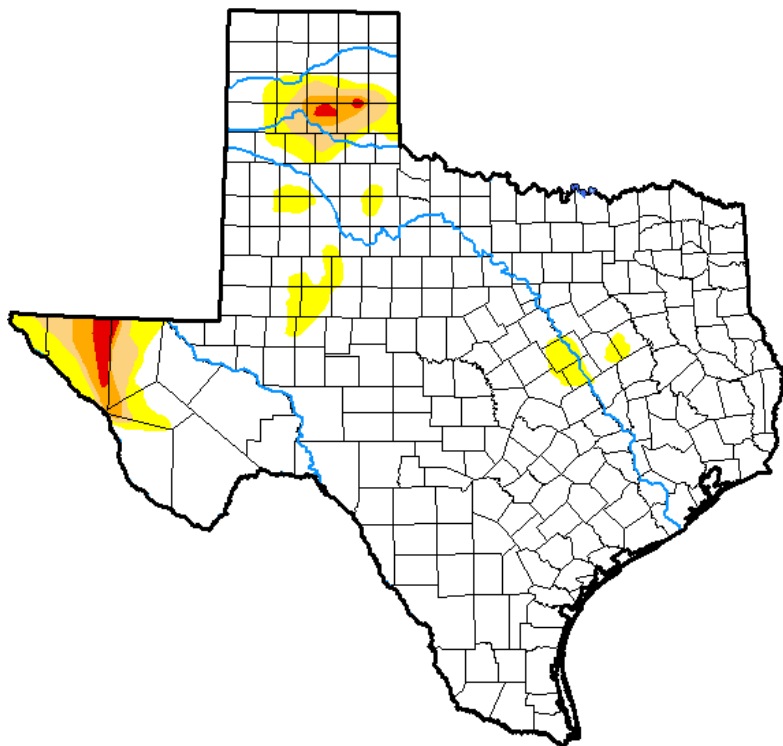


Seven Day Observed Regional Precipitation, October 21, 2018.



Source: National Weather Service, www.nws.noaa.gov.

Drought Monitor, Valid October 16, 2018.



Drought Conditions (Percent Area)

	None	D0-D4	D1-D4	D2-D4	D3-D4	D4
Current	90.35	9.65	3.92	1.73	0.54	0.00
Last Week <i>10-09-2018</i>	69.42	30.58	11.67	3.04	0.59	0.00
3 Months Ago <i>07-17-2018</i>	27.67	72.33	45.81	18.78	3.38	0.00
Start of Calendar Year <i>01-02-2018</i>	33.37	66.63	33.56	5.94	0.11	0.00
Start of Water Year <i>09-25-2018</i>	57.46	42.54	20.19	7.03	0.96	0.00
One Year Ago <i>10-17-2017</i>	80.83	19.17	4.32	0.00	0.00	0.00

Intensity:

- D0 Abnormally Dry
- D1 Moderate Drought
- D2 Severe Drought
- D3 Extreme Drought
- D4 Exceptional Drought

The Drought Monitor focuses on broad-scale conditions. Local conditions may vary. See accompanying text summary for forecast statements.

Author:

Eric Luebehusen
U.S. Department of Agriculture



Source: National Drought Mitigation Center, a partnership with USDA, U.S. Department of Commerce/NOAA, <http://droughtmonitor.unl.edu>.

Texas Crop Progress and Condition (October 2018)

USDA, National Agricultural Statistics Service, Southern Plains Regional Field Office