



Texas Crop Progress and Condition

Southern Plains Regional Field Office
Post Office Box 70 Austin, Texas 78767
(800) 626-3142 · FAX (855) 270-2725 · www.nass.usda.gov/tx

Issue: TX-CW3618

Weekly Summary for October 22- 28

Released: October 29, 2018

Slightly warmer temperatures were experienced across the state last week. Precipitation ranged between 0.5 and 2 inches, with isolated areas in the Upper Coast getting upwards of 5 inches. There were 3.6 days suitable for fieldwork.

Small Grains: Winter wheat was emerging in the Northern High Plains. Excessive rains caused some producers to consider reseeding fields in areas where erosion and drowning had caused poor stand potential. Winter wheat seedings remained at a standstill due to wet conditions in the Cross Timbers, the Blacklands, East Texas, the Edwards Plateau and South Texas. Drier conditions in the Lower Valley enabled wheat seeding to progress.

Row Crops: Some producers began harvesting cotton in the Northern Plains, while others in the Northern Low Plains and the Southern High Plains were spraying defoliant. Cotton, soybeans and sorghum harvest continued to be delayed in some areas of the state due to wet field conditions. Peanut digging had started in areas of South Texas.

Fruit, Vegetable and Specialty Crops: Pecan harvest was nearing completion in South Texas, but producers in the Cross Timbers, the Trans-Pecos, the Edwards Plateau and areas of South Central Texas were waiting for drier conditions to start harvest. Spinach and cabbage planting continued in South Texas.

Livestock, Range and Pasture: There were some cattle losses in the Cross Timbers due to weather exposure. Cattle in the rest of the state were in good condition. Horn fly populations were on the rise in South Texas. Pasture and range condition was rated 73 percent good to fair.

Crop Condition

Crop	Percent of Acreage					Index ¹	
	Excellent	Good	Fair	Poor	Very Poor	2018	2017
Corn	2	27	35	24	12	54	87
Cotton	6	20	30	19	25	49	70
Peanuts	1	62	36	1	0	79	80
Sorghum	5	18	39	26	12	52	85
Soybeans	9	18	58	12	3	64	76
Wheat	10	36	32	15	7	67	68
Range and Pasture	14	43	30	11	2	--	--

¹ The formula for the condition index is $I = (5V + 25P + 60F + 90G + 110E)/100$ where I = crop condition index and V, P, F, G, E = percentage of crop rated very poor, poor, fair, good, excellent.

Crop Progress

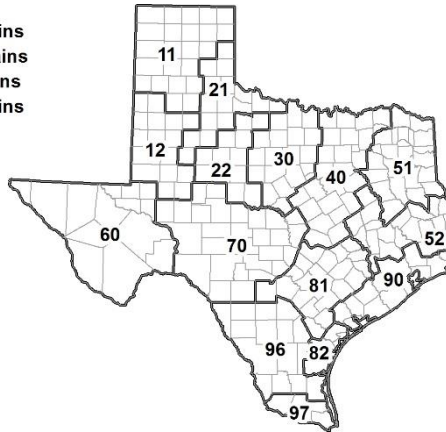
Stage	Percent of Acreage			
	Current Week	Previous Week	Previous Year	5 Year Average
Corn				
Harvested	85	79	87	86
Cotton				
Bolls Opening	86	83	89	91
Harvested	36	35	36	33
Peanuts				
Mature	55	54	53	52
Harvested	35	21	43	50
Sorghum				
Mature	94	91	96	94
Harvested	83	82	82	79
Soybeans				
Dropping Leaves	94	93	94	95
Harvested	80	79	88	79
Sunflowers				
Harvested	73	72	72	73
Winter Wheat				
Planted	67	63	78	75
Emerged	56	45	59	56
Oats				
Planted	70	64	88	76
Emerged	50	45	62	40

Soil Moisture and Days Suitable by District

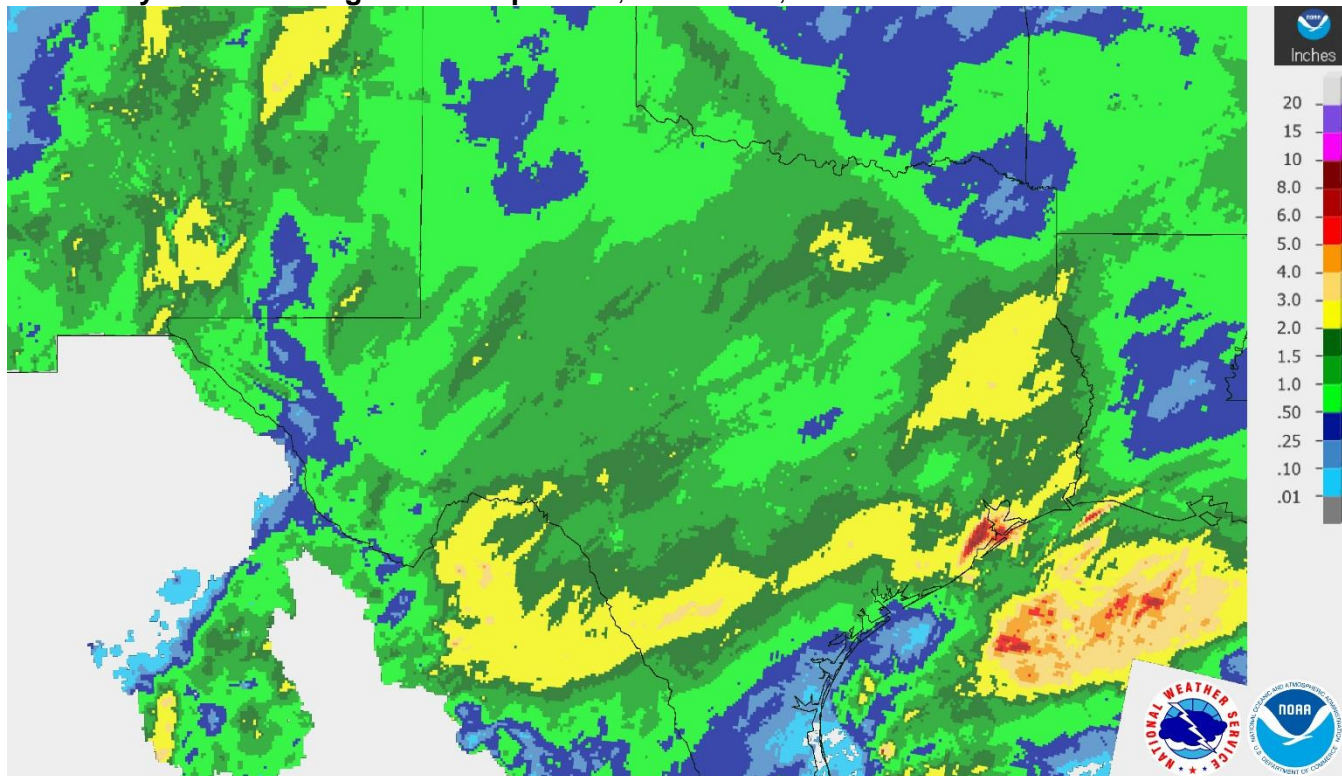
District	Topsoil Moisture Condition by District				Subsoil Moisture Condition by District				Days Suitable for Fieldwork
	Percentage of Acreage				Percentage of Acreage				
	Very Short	Short	Adequate	Surplus	Very Short	Short	Adequate	Surplus	
11	0	5	78	17	1	11	86	2	4.9
12	0	0	40	60	0	7	67	26	2.8
21	1	9	74	16	1	11	75	13	4.4
22	0	0	36	64	0	2	51	47	2.2
30	0	0	50	50	0	0	43	57	3.5
40	0	1	36	63	0	2	37	61	1.6
51	0	1	63	36	0	2	50	48	6.0
52	0	1	51	48	0	1	46	53	3.6
60	6	40	54	0	12	35	53	0	5.1
70	0	0	49	51	0	0	50	50	3.7
81	0	3	60	37	2	8	65	25	3.8
82	0	0	47	53	0	0	47	53	1.5
90	0	2	25	73	0	0	64	36	3.3
96	0	1	72	27	1	2	78	19	3.3
97	0	4	96	0	0	13	87	0	6.6
State	0	3	55	42	1	6	63	30	3.6

Texas Agricultural Districts

- 11 Northern High Plains
- 12 Southern High Plains
- 21 Northern Low Plains
- 22 Southern Low Plains
- 30 Cross Timbers
- 40 Blacklands
- 51 North East
- 52 South East
- 60 Trans-Pecos
- 70 Edwards Plateau
- 81 South Central
- 82 Coastal Bend
- 90 Upper Coast
- 96 South
- 97 Lower Valley

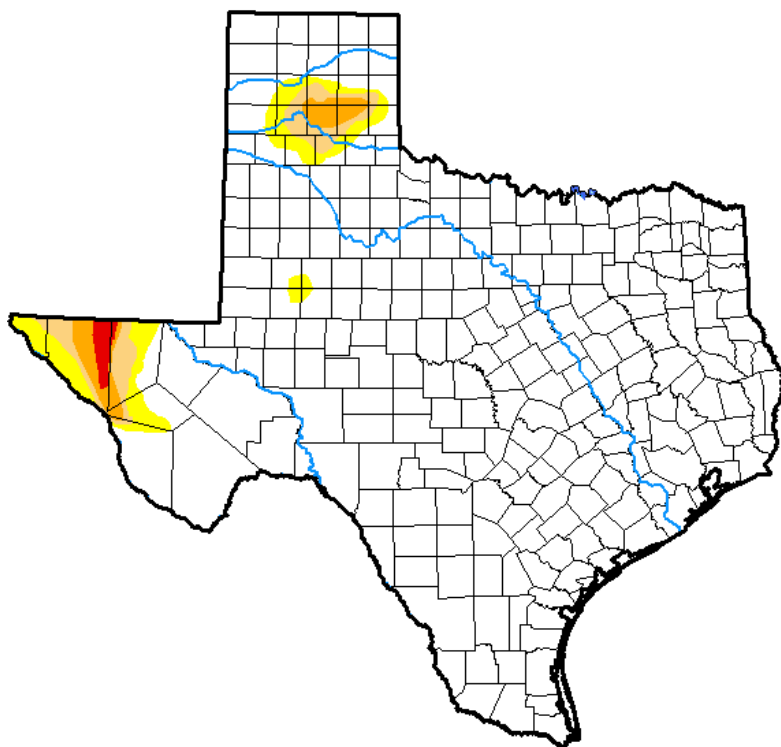


Seven Day Observed Regional Precipitation, October 28, 2018.



Source: National Weather Service, www.nws.noaa.gov.

Drought Monitor, Valid October 23, 2018.



Drought Conditions (Percent Area)

	None	D0-D4	D1-D4	D2-D4	D3-D4	D4
Current	93.19	6.81	3.62	1.72	0.42	0.00
Last Week <i>10-16-2018</i>	90.35	9.65	3.92	1.73	0.54	0.00
3 Months Ago <i>07-24-2018</i>	24.54	75.46	50.13	28.15	4.32	0.00
Start of Calendar Year <i>01-02-2018</i>	33.37	66.63	33.56	5.94	0.11	0.00
Start of Water Year <i>09-25-2018</i>	57.46	42.54	20.19	7.03	0.96	0.00
One Year Ago <i>10-24-2017</i>	80.89	19.11	1.74	0.00	0.00	0.00

Intensity:

- D0 Abnormally Dry
- D1 Moderate Drought
- D2 Severe Drought
- D3 Extreme Drought
- D4 Exceptional Drought

The Drought Monitor focuses on broad-scale conditions. Local conditions may vary. See accompanying text summary for forecast statements.

Author:

Eric Luebehusen
U.S. Department of Agriculture



Source: National Drought Mitigation Center, a partnership with USDA, U.S. Department of Commerce/NOAA, <http://droughtmonitor.unl.edu>.

Texas Crop Progress and Condition (29 October 2018)

USDA, National Agricultural Statistics Service, Southern Plains Regional Field Office