



# Texas Crop Progress and Condition

Southern Plains Regional Field Office  
Post Office Box 70 Austin, Texas 78767  
(800) 626-3142 · FAX (855) 270-2725 · [www.nass.usda.gov/tx](http://www.nass.usda.gov/tx)

**Issue: TX-CW3718**

**Weekly Summary for Oct 29-Nov 4**

**Released: November 5, 2018**

Last week's highest concentration of rainfall was reported in East Texas, the Upper Coast, areas of the Blacklands, and South Central Texas. Totals ranged from 2 to 3 inches, with isolated areas getting upwards of 5 inches. Precipitation in the rest of the state ranged from trace amounts to 1.5 inches. There were 4.6 days suitable for fieldwork.

**Small Grains:** Winter wheat seeding was active in the Northern High Plains, South Texas, areas of the Southern Low Plains and areas of the Edwards Plateau. Oats seeding was ongoing in South Texas. Wheat and oats conditions improved across many parts of the state thanks to the recent rains.

**Row Crops:** Producers in the High Plains, South East Texas and South Texas were able to resume cotton harvest. However, top soil moisture and mid-week rains further delayed harvest in many other parts of the state. Producers in the Northern High Plains were able to complete soybean harvest, while sorghum and corn harvest were in full swing. Harvest of peanuts progressed in South Texas.

**Fruit, Vegetable and Specialty Crops:** Moisture continued to delay pecan harvest in the Edwards Plateau and areas of South Central Texas. Spinach planting was ongoing in South Texas, while harvest of watermelons and cantaloupes reached completion. Sugarcane, citrus and vegetable harvest continued in the Lower Valley.

**Livestock, Range and Pasture:** Cattle were mostly rated in good condition. Producers looking for spring lambs and kids were managing sheep and goat herds in preparation for breeding season. Pasture and range condition was rated 73 percent good to fair.

### Crop Condition

Crop	Percent of Acreage					Index <sup>1</sup>	
	Excellent	Good	Fair	Poor	Very Poor	2018	2017
Corn	2	27	35	24	12	54	87
Cotton	4	18	32	19	27	46	63
Peanuts	0	53	34	6	7	70	80
Sorghum	5	18	39	26	12	52	85
Soybeans	9	18	58	12	3	64	76
Wheat	10	32	36	16	6	66	72
Range and Pasture	14	43	30	10	3	--	--

<sup>1</sup> The formula for the condition index is  $I = (5V + 25P + 60F + 90G + 110E)/100$  where I = crop condition index and V, P, F, G, E = percentage of crop rated very poor, poor, fair, good, excellent.

### Crop Progress

Stage	Percent of Acreage			
	Current Week	Previous Week	Previous Year	5 Year Average
<b>Corn</b>				
Harvested	90	85	91	91
<b>Cotton</b>				
Bolls Opening	90	86	93	94
Harvested	38	36	43	40
<b>Peanuts</b>				
Mature	68	55	(NA)	(NA)
Harvested	45	35	58	66
<b>Sorghum</b>				
Mature	97	94	99	96
Harvested	85	83	84	83
<b>Soybeans</b>				
Dropping Leaves	99	94	(NA)	(NA)
Harvested	82	80	92	82
<b>Sunflowers</b>				
Harvested	78	73	79	77
<b>Winter Wheat</b>				
Planted	72	67	84	82
Emerged	62	56	68	66
<b>Oats</b>				
Planted	80	70	93	85
Emerged	54	50	68	53

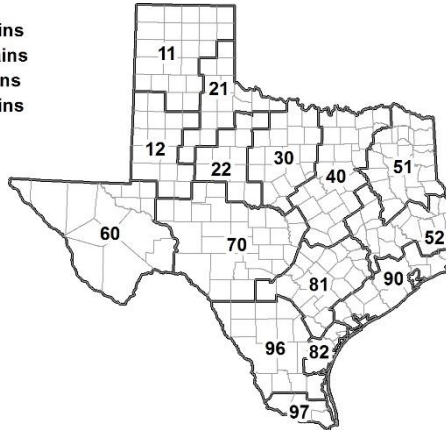
(NA) Not available.

### Soil Moisture and Days Suitable by District

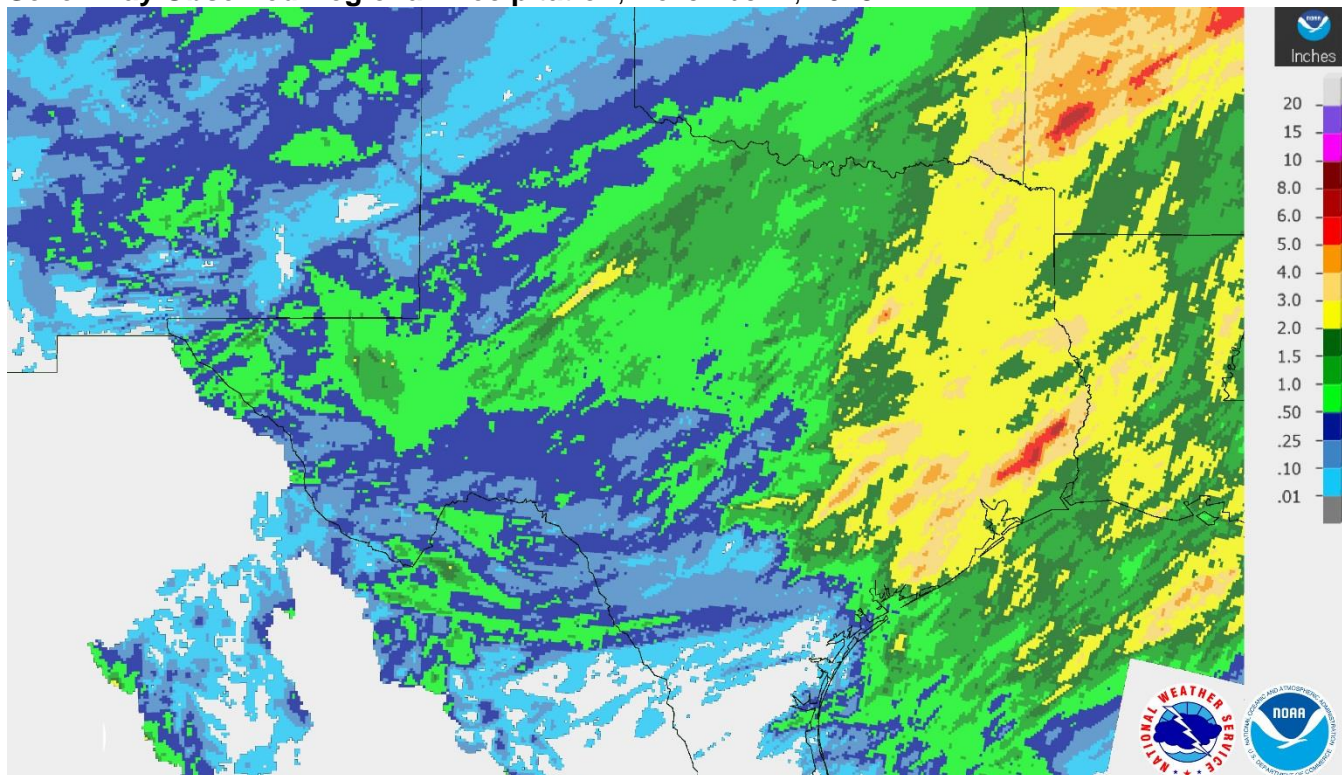
District	Topsoil Moisture Condition by District				Subsoil Moisture Condition by District				Days Suitable for Fieldwork
	Percentage of Acreage				Percentage of Acreage				
	Very Short	Short	Adequate	Surplus	Very Short	Short	Adequate	Surplus	
11	0	5	82	13	1	12	85	2	5.9
12	0	0	70	30	0	5	75	20	4.9
21	1	16	61	22	1	16	66	17	4.1
22	0	0	66	34	0	4	60	36	3.1
30	0	0	61	39	0	0	58	42	3.8
40	0	1	33	66	0	1	36	63	2.2
51	0	1	54	45	0	1	52	47	5.8
52	0	1	39	60	0	1	40	59	4.2
60	6	37	57	0	11	31	58	0	5.3
70	0	0	54	46	0	0	53	47	5.5
81	0	2	59	39	0	11	72	17	5.0
82	0	0	48	52	0	0	38	62	5.5
90	0	1	26	73	0	1	25	74	2.4
96	0	6	90	4	0	2	95	3	6.3
97	0	4	96	0	0	13	87	0	7.0
State	0	3	63	34	0	6	65	29	4.6

### Texas Agricultural Districts

- 11 Northern High Plains
- 12 Southern High Plains
- 21 Northern Low Plains
- 22 Southern Low Plains
- 30 Cross Timbers
- 40 Blacklands
- 51 North East
- 52 South East
- 60 Trans-Pecos
- 70 Edwards Plateau
- 81 South Central
- 82 Coastal Bend
- 90 Upper Coast
- 96 South
- 97 Lower Valley

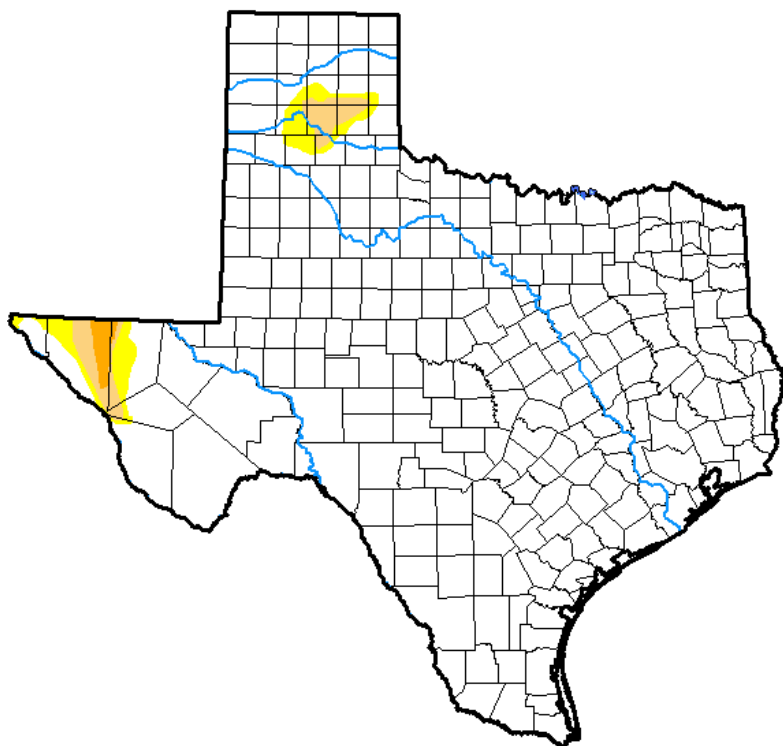


## Seven Day Observed Regional Precipitation, November 4, 2018.



Source: National Weather Service, [www.nws.noaa.gov](http://www.nws.noaa.gov).

## Drought Monitor, Valid October 30, 2018.



Drought Conditions (Percent Area)

	None	D0-D4	D1-D4	D2-D4	D3-D4	D4
<b>Current</b>	96.15	3.85	1.84	0.43	0.00	0.00
<b>Last Week</b> 10-23-2018	93.19	6.81	3.62	1.72	0.42	0.00
<b>3 Months Ago</b> 07-31-2018	21.82	78.18	59.26	35.93	8.48	0.00
<b>Start of Calendar Year</b> 01-02-2018	33.37	66.63	33.56	5.94	0.11	0.00
<b>Start of Water Year</b> 09-25-2018	57.46	42.54	20.19	7.03	0.96	0.00
<b>One Year Ago</b> 10-31-2017	71.18	28.82	2.52	0.11	0.00	0.00

**Intensity:**

- D0 Abnormally Dry
- D1 Moderate Drought
- D2 Severe Drought
- D3 Extreme Drought
- D4 Exceptional Drought

The Drought Monitor focuses on broad-scale conditions. Local conditions may vary. See accompanying text summary for forecast statements.

**Author:**

Deborah Bathke  
National Drought Mitigation Center



Source: National Drought Mitigation Center, a partnership with USDA, U.S. Department of Commerce/NOAA, <http://droughtmonitor.unl.edu>.

## Texas Crop Progress and Condition (November 5, 2018)

USDA, National Agricultural Statistics Service, Southern Plains Regional Field Office