



Texas Crop Progress and Condition

Southern Plains Regional Field Office
Post Office Box 70 Austin, Texas 78767
(800) 626-3142 · FAX (855) 270-2725 · www.nass.usda.gov/tx

Issue: TX-CW3818

Weekly Summary for November 5 - 11

Released: November 13, 2018

Most areas of the state experienced cool mornings with mild afternoons during the previous week. Areas of East Texas received 2 to 6 inches of rainfall, while the rest of the state got trace amounts to 1 inch of precipitation. There were 4.6 days suitable for fieldwork.

Small Grains: Small grain seedings were underway in areas of East Texas, South Central Texas, the Edwards Plateau and South Texas. Producers in other areas of the state were waiting for drier conditions to start seeding.

Row Crops: Cotton harvest progressed in the High Plains, and was underway in the Northern Low Plains, the Trans-Pecos and the Edwards Plateau. Peanut harvest was in full swing in South Texas. Some sorghum fields were being cut for hay in the Edwards Plateau.

Fruit, Vegetable and Specialty Crops: Wet conditions slowed pecan harvest in North East Texas and South Central Texas. Planting of cabbage and spinach continued in South Texas. Sugarcane, citrus and vegetable harvest continued in the Lower Valley.

Livestock, Range and Pasture: Cool, wet weather was affecting livestock conditions in the Cross Timbers. However, statewide, cattle and livestock were mostly rated in good condition. Producers in the Blacklands and North East Texas were providing supplemental feed to cattle. Pasture and range condition was rated 75 percent good to fair.

Crop Condition

Crop	Percent of Acreage					Index ¹	
	Excellent	Good	Fair	Poor	Very Poor	2018	2017
Corn	2	27	35	24	12	54	87
Cotton	4	18	33	20	25	47	78
Peanuts	0	53	34	6	7	70	80
Sorghum	5	18	39	26	12	52	85
Soybeans	9	18	58	12	3	64	76
Wheat	8	39	36	10	7	68	70
Range and Pasture	12	44	31	9	4	--	--

¹ The formula for the condition index is $I = (5V + 25P + 60F + 90G + 110E)/100$ where I = crop condition index and V, P, F, G, E = percentage of crop rated very poor, poor, fair, good, excellent.

Crop Progress

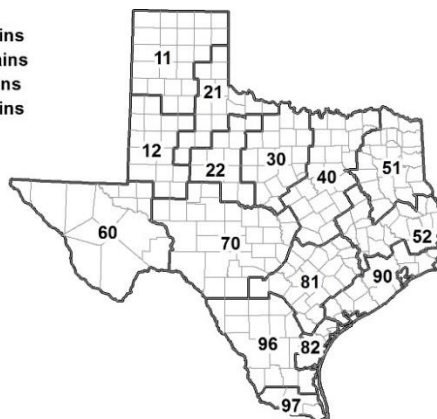
Stage	Percent of Acreage			
	Current Week	Previous Week	Previous Year	5 Year Average
Corn				
Harvested	94	90	95	94
Cotton				
Bolls Opening	93	90	95	97
Harvested	42	38	53	48
Peanuts				
Mature	73	68	74	72
Harvested	58	45	77	80
Sorghum				
Harvested	89	85	90	88
Soybeans				
Harvested	85	82	95	85
Sunflowers				
Harvested	82	78	83	81
Winter Wheat				
Planted	80	72	88	86
Emerged	67	62	77	73
Oats				
Planted	88	80	96	89
Emerged	59	54	78	65

Soil Moisture and Days Suitable by District

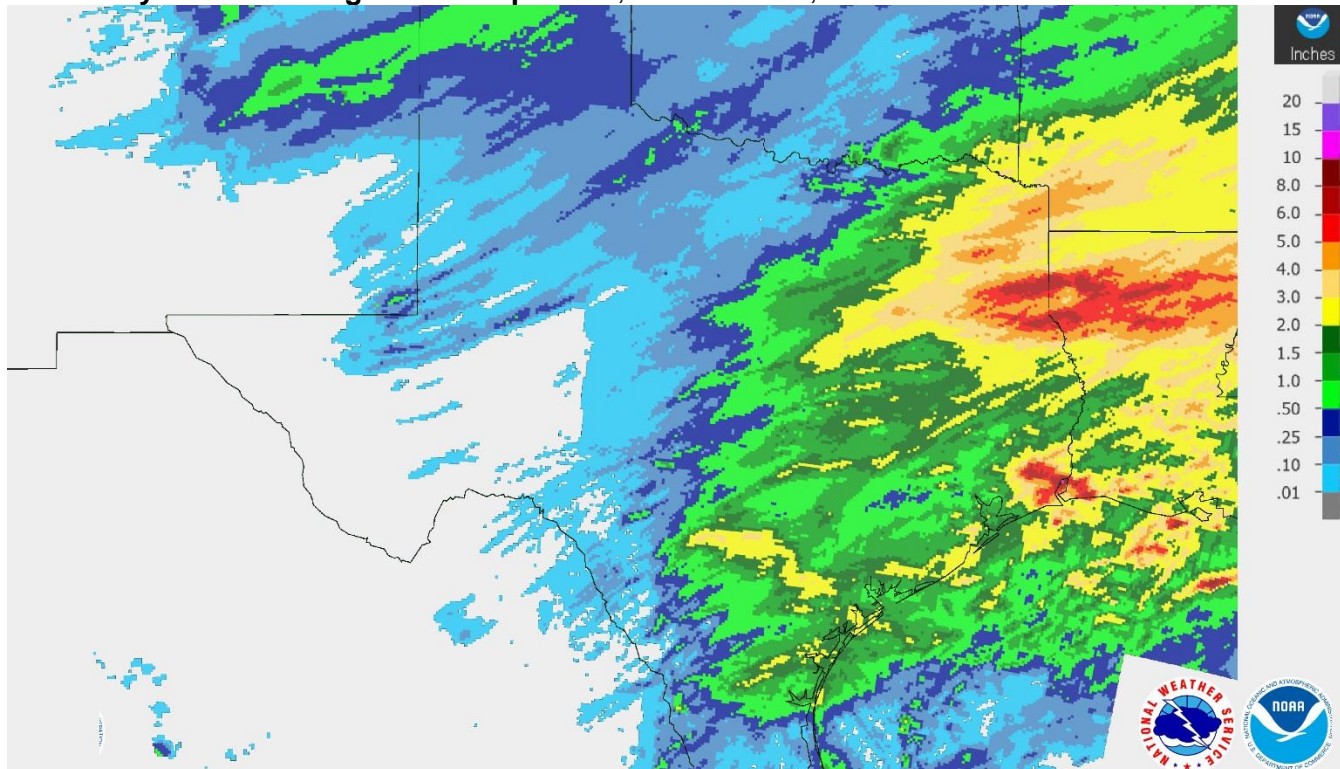
District	Topsoil Moisture Condition by District				Subsoil Moisture Condition by District				Days Suitable for Fieldwork
	Percentage of Acreage				Percentage of Acreage				
	Very Short	Short	Adequate	Surplus	Very Short	Short	Adequate	Surplus	
11	0	4	84	12	0	9	89	2	6.1
12	0	7	70	23	0	12	68	20	4.6
21	1	13	77	9	1	12	81	6	5.5
22	0	0	43	57	0	0	44	56	3.3
30	0	0	62	38	0	0	57	43	4.2
40	0	2	26	72	0	1	31	68	1.6
51	0	1	43	56	0	1	41	58	5.1
52	0	1	35	64	0	2	35	63	4.2
60	6	37	57	0	12	31	57	0	6.2
70	0	0	61	39	0	0	62	38	6.0
81	0	1	59	40	0	1	80	19	4.0
82	0	16	33	51	0	0	33	67	6.2
90	0	0	13	87	0	0	14	86	3.0
96	0	10	82	8	0	5	90	5	5.2
97	0	4	96	0	0	13	87	0	7.0
State	0	5	59	36	0	6	62	32	4.6

Texas Agricultural Districts

- 11 Northern High Plains
- 12 Southern High Plains
- 21 Northern Low Plains
- 22 Southern Low Plains
- 30 Cross Timbers
- 40 Blacklands
- 51 North East
- 52 South East
- 60 Trans-Pecos
- 70 Edwards Plateau
- 81 South Central
- 82 Coastal Bend
- 90 Upper Coast
- 96 South
- 97 Lower Valley

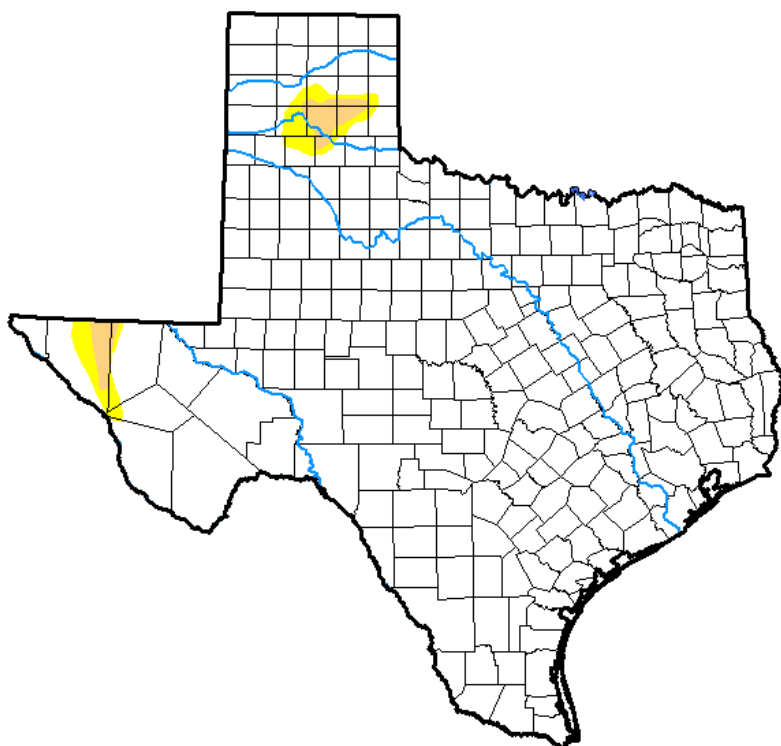


Seven Day Observed Regional Precipitation, November 12, 2018.



Source: National Weather Service, www.nws.noaa.gov.

Drought Monitor, Valid November 6, 2018.



Drought Conditions (Percent Area)

	None	D0-D4	D1-D4	D2-D4	D3-D4	D4
Current	97.17	2.83	1.15	0.00	0.00	0.00
Last Week <i>10-30-2018</i>	96.15	3.85	1.84	0.43	0.00	0.00
3 Months Ago <i>08-07-2018</i>	21.55	78.45	63.94	45.45	19.43	0.36
Start of Calendar Year <i>01-02-2018</i>	33.37	66.63	33.56	5.94	0.11	0.00
Start of Water Year <i>09-23-2018</i>	57.46	42.54	20.19	7.03	0.96	0.00
One Year Ago <i>11-07-2017</i>	58.23	41.77	8.80	0.56	0.00	0.00

Intensity:

- D0 Abnormally Dry
- D1 Moderate Drought
- D2 Severe Drought
- D3 Extreme Drought
- D4 Exceptional Drought

The Drought Monitor focuses on broad-scale conditions. Local conditions may vary. See accompanying text summary for forecast statements.

Author:

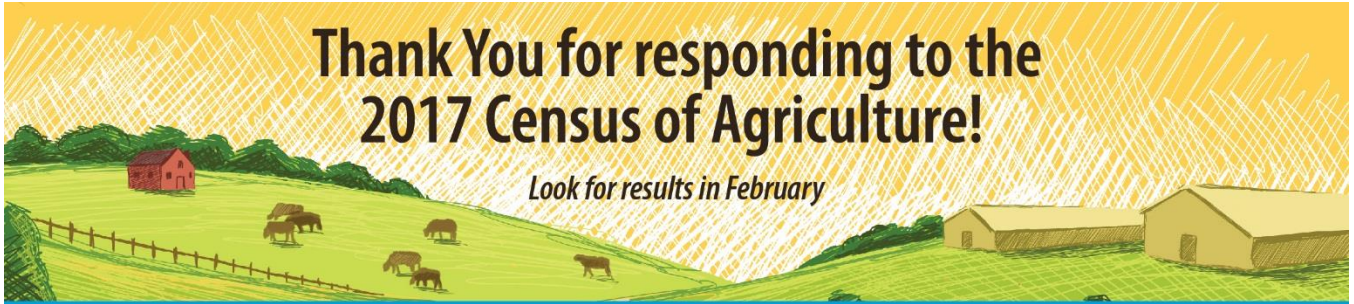
David Simeral
Western Regional Climate Center



Source: National Drought Mitigation Center, a partnership with USDA, U.S. Department of Commerce/NOAA, <http://droughtmonitor.unl.edu>.

Thank You for responding to the 2017 Census of Agriculture!

Look for results in February



For more information about the census and its upcoming special studies, visit www.nass.usda.gov/AgCensus