



Texas Crop Progress and Condition

Southern Plains Regional Field Office
Post Office Box 70 Austin, Texas 78767
(800) 626-3142 · FAX (855) 270-2725 · www.nass.usda.gov/tx

Issue: TX-CW3918

Weekly Summary for November 12- 18

Released: November 19, 2018

A frost early in the week affected areas of the Plains and the Cross Timbers. The first significant snow storm was experienced in areas of the High Plains. The rest of the week remained cool and dry in most areas of the state. Areas of East Texas and South Central Texas received between 0.2 and 2 inches of rain, while the rest of the state received only trace amounts of precipitation. There were 4.7 days suitable for fieldwork.

Small Grains: Producers in the Northern High Plains were waiting for better conditions to continue wheat seedings, while seeding resumed in the Low Plains. Small grain seedings continued in the Edwards Plateau, South Central Texas, and South Texas.

Row Crops: Cotton harvest in the Northern High Plains was set back by snow early in the week, but continued in the Southern High Plains, the Low Plains, the Cross Timbers, the Trans-Pecos and the Edwards Plateau. Producers were concerned with possible toxicity levels in sorghum due to last week's freeze in the Cross Timbers. Peanut harvest progressed in South Texas.

Fruit, Vegetable and Specialty Crops: Pecan harvest was ongoing in the Cross Timbers. Spinach was making good progress in South Texas. Spinach and cabbage harvest was expected to start in the next few weeks. Sugarcane, citrus and vegetable harvest continued in the Lower Valley.

Livestock, Range and Pasture: Cattle and livestock were mostly rated in good condition. Producers in the Northern High Plains, the Southern Low Plains, the Cross Timbers, Blacklands and North East Texas were providing supplementing feed to cattle. Pasture and range condition was rated 76 percent good to fair.

Crop Condition

Crop	Percent of Acreage					Index ¹	
	Excellent	Good	Fair	Poor	Very Poor	2018	2017
Corn	2	27	35	24	12	54	(NA)
Cotton	5	25	34	20	16	52	78
Peanuts	0	53	34	6	7	70	80
Sorghum	5	18	39	26	12	52	85
Soybeans	9	18	58	12	3	64	(NA)
Wheat	12	44	35	8	1	76	67
Oats	5	41	34	12	8	66	67
Range and Pasture	8	41	35	11	5	--	--

¹ The formula for the condition index is $I = (5V + 25P + 60F + 90G + 110E)/100$ where I = crop condition index and V, P, F, G, E = percentage of crop rated very poor, poor, fair, good, excellent.
(NA) Not available.

Crop Progress

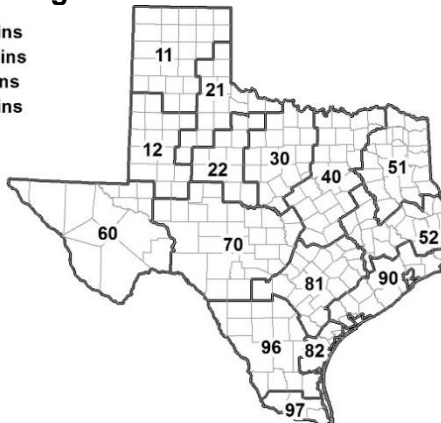
Stage	Percent of Acreage			
	Current Week	Previous Week	Previous Year	5 Year Average
Corn				
Harvested	95	94	97	97
Cotton				
Bolls Opening	95	93	97	98
Harvested	47	42	65	56
Peanuts				
Mature	78	73	78	78
Harvested	70	58	84	87
Sorghum				
Harvested	93	89	94	91
Soybeans				
Harvested	89	85	98	89
Sunflowers				
Harvested	86	82	86	86
Winter Wheat				
Planted	85	80	90	89
Emerged	72	67	79	77
Oats				
Planted	93	88	99	92
Emerged	71	59	82	71

Soil Moisture and Days Suitable by District

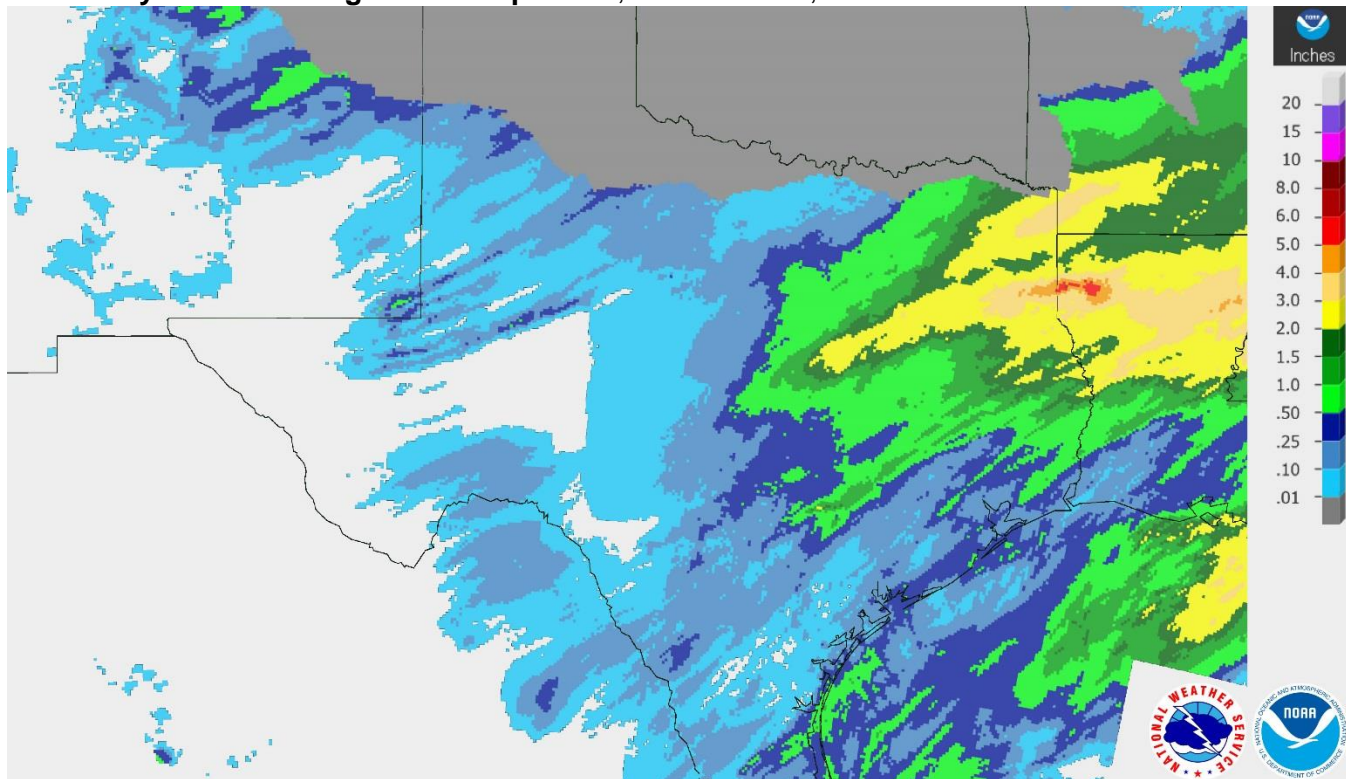
District	Topsoil Moisture Condition by District				Subsoil Moisture Condition by District				Days Suitable for Fieldwork
	Percentage of Acreage				Percentage of Acreage				
	Very Short	Short	Adequate	Surplus	Very Short	Short	Adequate	Surplus	
11	0	0	87	13	0	2	95	3	3.4
12	0	11	84	5	0	17	80	3	6.6
21	1	15	79	5	1	15	80	4	4.5
22	0	0	78	22	0	2	71	27	5.5
30	1	0	52	47	1	0	45	54	5.2
40	0	0	39	61	0	1	44	55	2.3
51	0	1	65	34	0	1	63	36	6.1
52	0	1	55	44	0	1	49	50	5.1
60	6	37	57	0	12	27	61	0	6.8
70	4	5	72	19	0	2	78	20	6.6
81	0	0	70	30	0	0	86	14	4.4
82	0	0	77	23	0	0	77	23	4.7
90	0	0	30	70	0	0	29	71	2.8
96	0	9	89	2	0	3	93	4	6.1
97	0	4	96	0	0	13	87	0	7.0
State	0	4	72	24	0	6	72	22	4.7

Texas Agricultural Districts

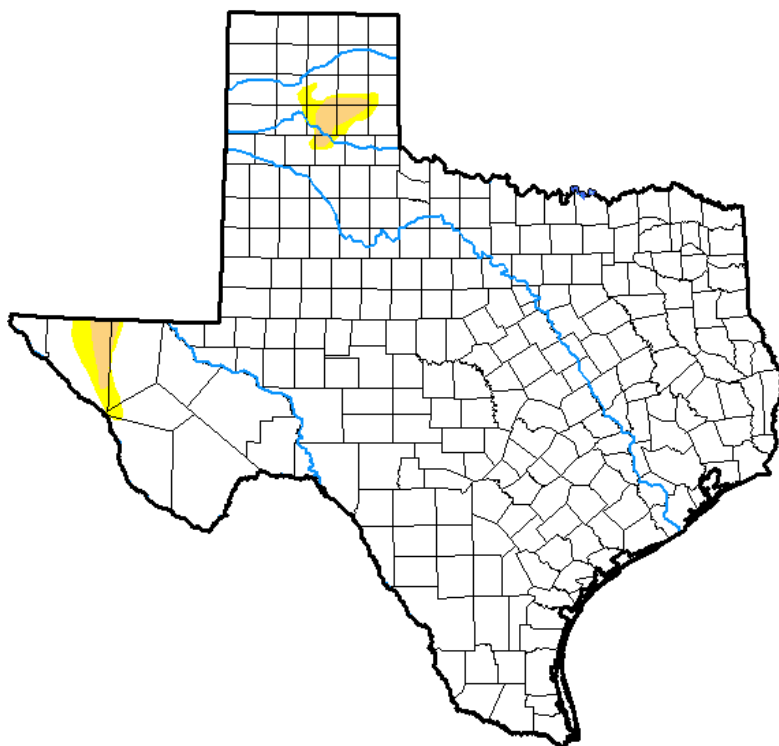
- 11 Northern High Plains
- 12 Southern High Plains
- 21 Northern Low Plains
- 22 Southern Low Plains
- 30 Cross Timbers
- 40 Blacklands
- 51 North East
- 52 South East
- 60 Trans-Pecos
- 70 Edwards Plateau
- 81 South Central
- 82 Coastal Bend
- 90 Upper Coast
- 96 South
- 97 Lower Valley



Seven Day Observed Regional Precipitation, November 18, 2018.



Drought Monitor, Valid November 13, 2018.



Drought Conditions (Percent Area)

	None	D0-D4	D1-D4	D2-D4	D3-D4	D4
Current	97.73	2.27	0.99	0.00	0.00	0.00
Last Week <i>11-06-2018</i>	97.17	2.83	1.15	0.00	0.00	0.00
3 Months Ago <i>08-14-2018</i>	22.28	77.72	59.18	32.14	6.22	0.35
Start of Calendar Year <i>01-02-2018</i>	33.37	66.63	33.56	5.94	0.11	0.00
Start of Water Year <i>09-25-2018</i>	57.46	42.54	20.19	7.03	0.96	0.00
One Year Ago <i>11-14-2017</i>	54.34	45.66	15.26	0.97	0.00	0.00

Intensity:

- D0 Abnormally Dry
- D1 Moderate Drought
- D2 Severe Drought
- D3 Extreme Drought
- D4 Exceptional Drought

The Drought Monitor focuses on broad-scale conditions. Local conditions may vary. See accompanying text summary for forecast statements.

Author:

David Simeral
Western Regional Climate Center



Source: National Drought Mitigation Center, a partnership with USDA, U.S. Department of Commerce/NOAA, <http://droughtmonitor.unl.edu>.

Thank You for responding to the 2017 Census of Agriculture!

Look for results in February

For more information about the census and its upcoming special studies, visit www.nass.usda.gov/AgCensus