



# Texas Crop Progress and Condition

Southern Plains Regional Field Office  
Post Office Box 70 Austin, Texas 78767  
(800) 626-3142 · FAX (855) 270-2725 · www.nass.usda.gov/tx

**Issue: TX-CW4018**

**Weekly Summary for November 19- 25**

**Released: November 26, 2018**

**Note:** This is the final weekly report for the 2018 season.

Weather last week was mostly cool and dry statewide. Precipitation in the Upper Coast and South East Texas ranged from 0.2 to 1 inch, with isolated areas getting upwards of 2 inches. There were 5.6 days suitable for fieldwork.

**Small Grains:** Small grain seeding continued in the Northern High Plains and the Southern Low Plains. Some areas in the Cross Timbers and the Blacklands were still too moist to continue with small grains seedings.

**Row Crops:** Cotton harvest continued in the Low Plains, the Cross Timbers, the Blacklands, the Trans-Pecos, the Edwards Plateau and the Upper Coast, while it progressed slowly in the Northern High Plains. Sorghum harvest as ongoing in the Northern High Plains while corn harvest was nearing completion. Harvest of peanuts was underway in the Cross Timbers and continued progressing in South Texas.

**Fruit, Vegetable and Specialty Crops:** Pecan harvest was underway in the Edwards Plateau and the Cross Timbers. Pecan harvest was delayed in areas of South Central Texas, causing pecans to sprout in the shell. Cooler conditions and supplemental water applications provided excellent growing conditions for spinach and cabbage in South Texas. Sugarcane, citrus and vegetable harvest continued in the Lower Valley.

**Livestock, Range and Pasture:** Use of supplemental feeding was increasing in the Cross Timbers. Cattle and livestock were mostly rated in good to fair condition. Freezing temperatures induced dormancy in pastures in many areas of the state. Pasture and range condition was rated 77 percent fair to good.

## Crop Condition

Crop	Percent of Acreage					Index <sup>1</sup>	
	Excellent	Good	Fair	Poor	Very Poor	2018	2017
Cotton	5	25	34	20	16	54	78
Peanuts	0	53	34	6	7	70	80
Sorghum	5	18	39	26	12	52	(NA)
Soybeans	9	18	58	12	3	64	(NA)
Wheat	7	41	36	11	5	69	64
Oats	6	35	34	16	9	63	62
Range and Pasture	5	34	43	14	4	--	--

<sup>1</sup>The formula for the condition index is  $I = (5V + 25P + 60F + 90G + 110E)/100$  where I = crop condition index and V, P, F, G, E = percentage of crop rated very poor, poor, fair, good, excellent.

<sup>2</sup>(NA) Not available.

### Crop Progress

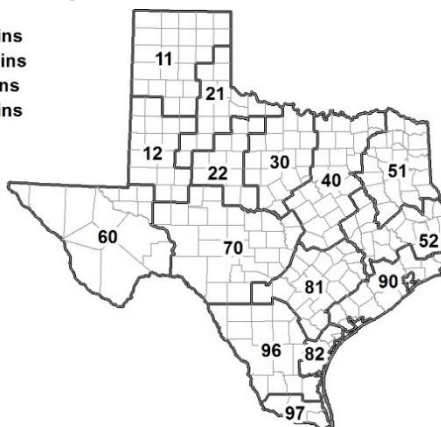
Stage	Percent of Acreage			
	Current Week	Previous Week	Previous Year	5 Year Average
<b>Cotton</b>				
Harvested	60	47	70	65
<b>Peanuts</b>				
Mature	85	78	82	83
Harvested	80	70	90	93
<b>Sorghum</b>				
Harvested	96	93	96	93
<b>Soybeans</b>				
Harvested	93	89	100	92
<b>Sunflowers</b>				
Harvested	89	86	90	88
<b>Winter Wheat</b>				
Planted	90	85	92	91
Emerged	80	72	83	81
<b>Oats</b>				
Planted	96	93	99	93
Emerged	77	71	85	77

### Soil Moisture and Days Suitable by District

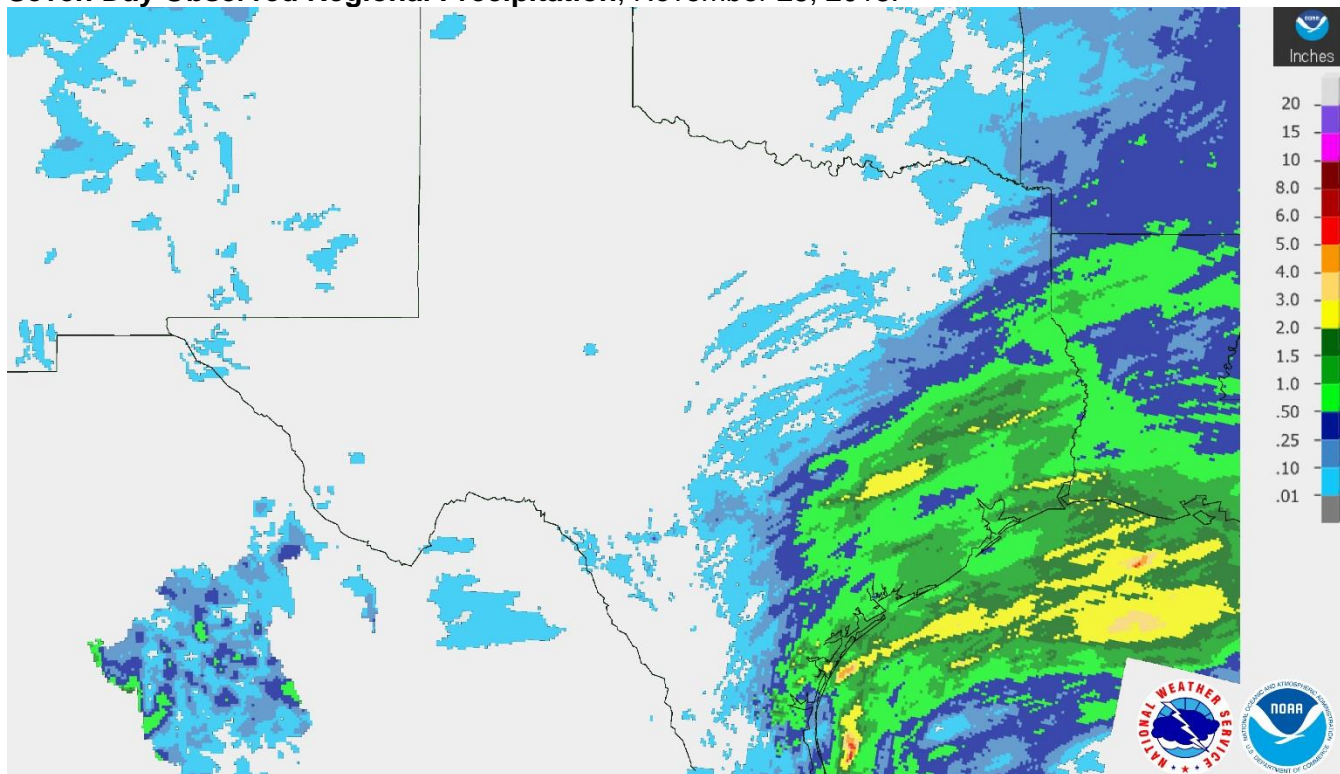
District	Topsoil Moisture Condition by District				Subsoil Moisture Condition by District				Days Suitable for Fieldwork
	Percentage of Acreage				Percentage of Acreage				
	Very Short	Short	Adequate	Surplus	Very Short	Short	Adequate	Surplus	
11	0	6	86	8	0	7	93	0	5.5
12	0	11	85	4	0	20	77	3	5.9
21	2	23	70	5	2	28	63	7	6.4
22	0	3	77	20	0	3	65	32	6.2
30	0	3	83	14	0	3	71	26	6.2
40	0	3	73	24	0	3	56	41	4.9
51	0	3	68	29	0	3	67	30	6.9
52	0	3	71	26	0	3	61	36	6.0
60	5	33	62	0	9	26	65	0	6.8
70	0	5	79	16	0	4	74	22	6.9
81	0	4	77	19	0	4	86	10	5.4
82	0	0	84	16	0	0	84	16	3.9
90	0	0	4	96	0	0	3	97	1.5
96	0	14	83	3	0	10	87	3	6.8
97	0	20	80	0	0	13	87	0	7.0
State	0	7	76	17	0	9	72	19	5.6

### Texas Agricultural Districts

- 11 Northern High Plains
- 12 Southern High Plains
- 21 Northern Low Plains
- 22 Southern Low Plains
- 30 Cross Timbers
- 40 Blacklands
- 51 North East
- 52 South East
- 60 Trans-Pecos
- 70 Edwards Plateau
- 81 South Central
- 82 Coastal Bend
- 90 Upper Coast
- 96 South
- 97 Lower Valley

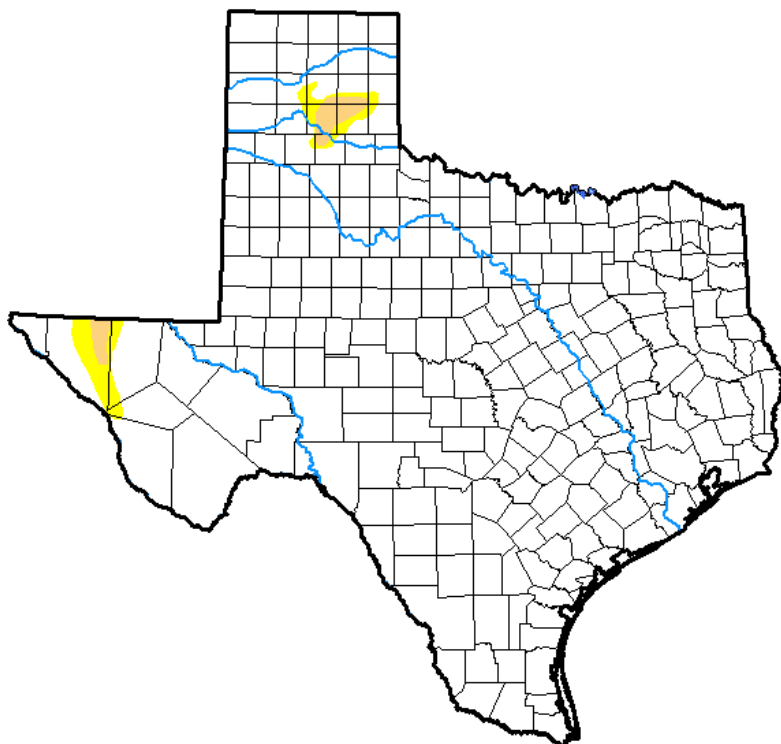


**Seven Day Observed Regional Precipitation, November 25, 2018.**



Source: National Weather Service, [www.nws.noaa.gov](http://www.nws.noaa.gov).

**Drought Monitor**, Valid November 20, 2018.



*Drought Conditions (Percent Area)*

	None	D0-D4	D1-D4	D2-D4	D3-D4	D4
<b>Current</b>	97.73	2.27	0.80	0.00	0.00	0.00
<b>Last Week</b> <i>11-13-2018</i>	97.73	2.27	0.99	0.00	0.00	0.00
<b>3 Months Ago</b> <i>08-21-2018</i>	18.99	81.01	59.88	28.00	5.22	0.30
<b>Start of Calendar Year</b> <i>01-02-2018</i>	33.37	66.63	33.56	5.94	0.11	0.00
<b>Start of Water Year</b> <i>09-25-2018</i>	57.46	42.54	20.19	7.03	0.96	0.00
<b>One Year Ago</b> <i>11-21-2017</i>	40.02	59.98	20.23	3.25	0.00	0.00

Intensity:

- D0 Abnormally Dry
- D1 Moderate Drought
- D2 Severe Drought
- D3 Extreme Drought
- D4 Exceptional Drought

*The Drought Monitor focuses on broad-scale conditions. Local conditions may vary. See accompanying text summary for forecast statements.*

Author:

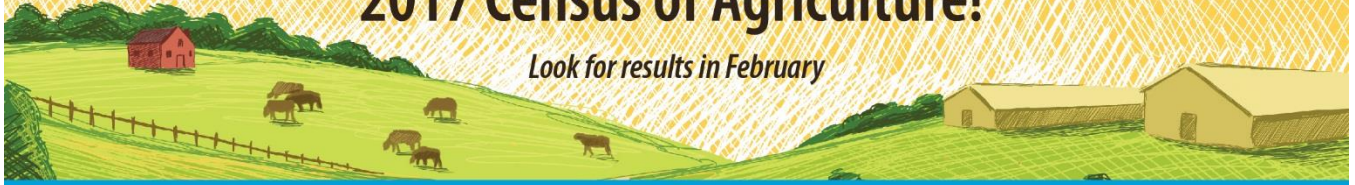
Richard Heim  
NCEI/NOAA



Source: National Drought Mitigation Center, a partnership with USDA, U.S. Department of Commerce/NOAA, <http://droughtmonitor.unl.edu>.

# Thank You for responding to the 2017 Census of Agriculture!

*Look for results in February*



For more information about the census and its upcoming special studies, visit [www.nass.usda.gov/AgCensus](http://www.nass.usda.gov/AgCensus)