



Texas Crop Progress and Condition

Southern Plains Regional Field Office
Post Office Box 70 Austin, Texas 78767
(800) 626-3142 · FAX (855) 270-2725 · www.nass.usda.gov/tx

Issue: TX-CW0219

Weekly Summary for February 4-10

Released: February 11, 2019

A strong cold front passed through late last week, resulting in colder temperatures in most areas of the state. Precipitation in East Texas, parts of the Cross Timbers, and the Blacklands ranged from 0.5 up to 2 inches. Most other areas in the state received from trace amounts up to 0.5 of an inch. There were 5.4 days suitable for fieldwork.

Small Grains: Small grain crops continued to progress over areas of the state with adequate moisture. Some wheat damage was reported due to Hessian fly populations in the Edwards Plateau. Winter wheat condition was rated 68 percent fair to good across the state and oats condition was rated 71 percent fair to good.

Row Crops: Cotton harvest was still ongoing in the Southern Low Plains due to unusually wet weather experienced earlier in the harvest season. Corn planting had begun in areas of the Coastal Bend, while planting was expected to be delayed in the Upper Coast due to soil saturation.

Fruit, Vegetable and Specialty Crops: Recent freeze in the Cross Timbers had fruit producers concerned over possible damage on their crops. Potato planting along with cabbage and spinach harvest continued in South Texas. Sugarcane harvest continued in the Lower Valley.

Livestock, Range and Pasture: Use of supplemental feeding continued across much of the state, which helped maintain cattle conditions in the mostly fair to good range. Pasture and range condition was rated 67 percent fair to good, though pasture conditions varied greatly across the state.

Crop Progress

Stage	Percent of Acreage			
	Current Week	Previous Week	Previous Year	5 Year Average
Cotton Harvested	95	92	100	100

Crop Condition

Crop	Percent of Acreage					Index ¹	
	Excellent	Good	Fair	Poor	Very Poor	2019	2018
Wheat	6	25	43	19	7	60	(NA)
Oats	2	34	37	6	21	58	(NA)
Range and Pasture	4	29	38	23	6	--	--

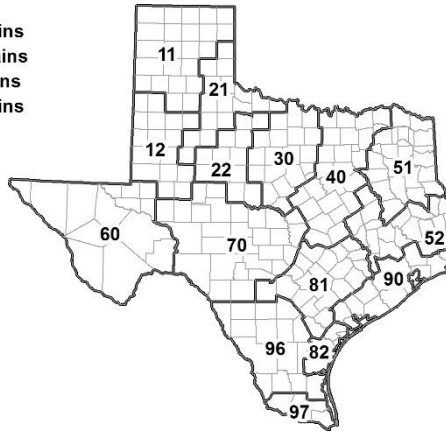
¹ The formula for the condition index is $I = (5V + 25P + 60F + 90G + 110E)/100$ where I = crop condition index and V, P, F, G, E = percentage of crop rated very poor, poor, fair, good, excellent.
(NA) Not available.

Soil Moisture and Days Suitable by District

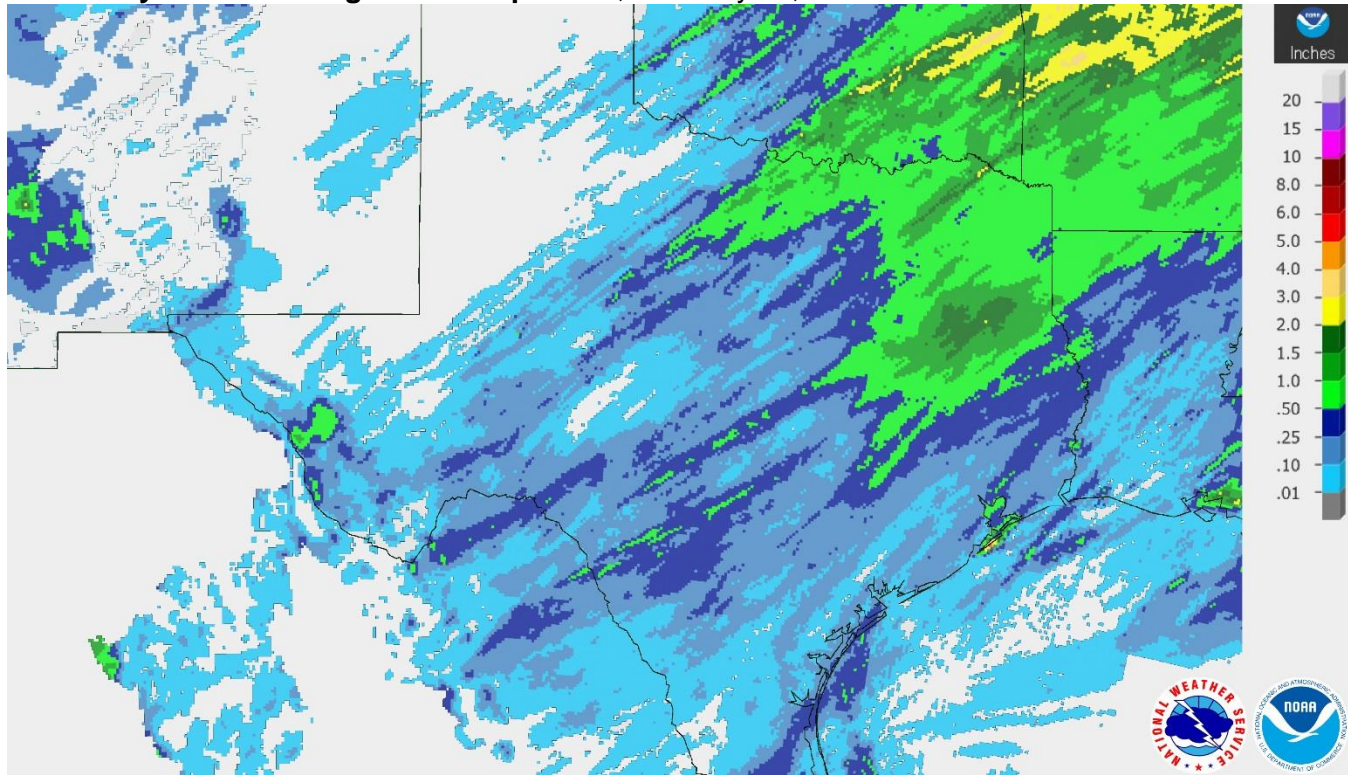
District	Topsoil Moisture Condition by District				Subsoil Moisture Condition by District				Days Suitable for Fieldwork
	Percentage of Acreage				Percentage of Acreage				
	Very Short	Short	Adequate	Surplus	Very Short	Short	Adequate	Surplus	
11	26	40	34	0	14	30	56	0	5.8
12	39	48	13	0	17	45	38	0	6.5
21	5	50	45	0	3	37	58	2	6.5
22	0	11	81	8	0	2	75	23	6.1
30	2	9	78	11	1	2	92	5	5.8
40	0	0	59	41	0	0	40	60	3.9
51	0	0	44	56	0	0	42	58	5.9
52	1	4	34	61	1	1	39	59	4.1
60	36	30	34	0	35	33	32	0	6.5
70	2	7	89	2	0	7	77	16	6.8
81	0	2	50	48	0	2	71	27	4.0
82	0	6	77	17	0	2	89	9	3.4
90	0	0	13	87	0	0	11	89	2.4
96	2	32	63	3	17	18	62	3	6.4
97	20	60	20	0	20	60	20	0	4.8
State	14	25	43	18	8	20	52	20	5.4

Texas Agricultural Districts

- 11 Northern High Plains
- 12 Southern High Plains
- 21 Northern Low Plains
- 22 Southern Low Plains
- 30 Cross Timbers
- 40 Blacklands
- 51 North East
- 52 South East
- 60 Trans-Pecos
- 70 Edwards Plateau
- 81 South Central
- 82 Coastal Bend
- 90 Upper Coast
- 96 South
- 97 Lower Valley

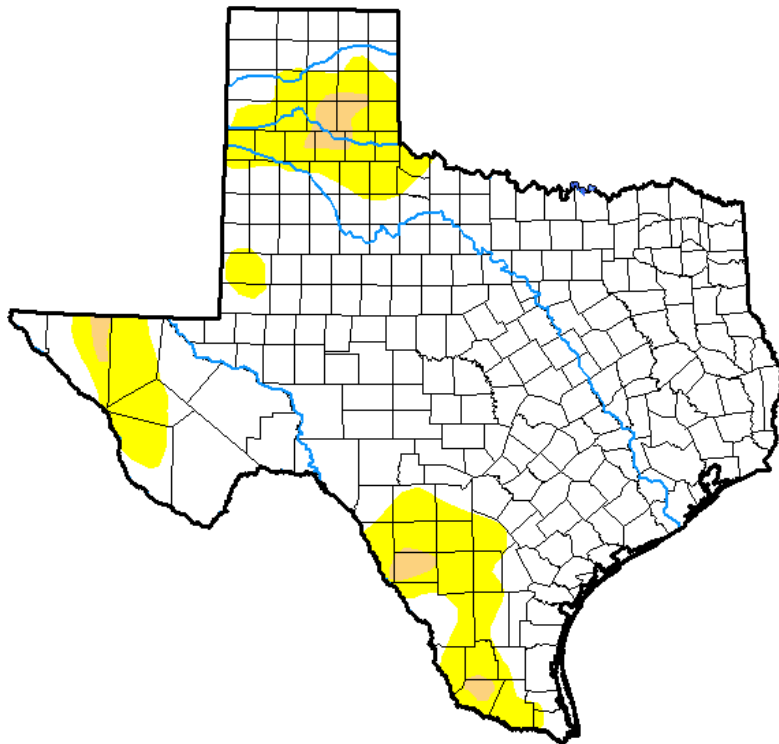


Seven Day Observed Regional Precipitation, February 10, 2019.



Source: National Weather Service, www.nws.noaa.gov.

Drought Monitor, Valid February 5, 2019.



Drought Conditions (Percent Area)

	None	D0-D4	D1-D4	D2-D4	D3-D4	D4
Current	81.97	18.03	1.81	0.00	0.00	0.00
Last Week <i>01-29-2019</i>	90.22	9.78	1.15	0.00	0.00	0.00
3 Months Ago <i>11-06-2018</i>	97.17	2.83	1.15	0.00	0.00	0.00
Start of Calendar Year <i>01-01-2019</i>	92.99	7.01	1.32	0.00	0.00	0.00
Start of Water Year <i>09-25-2018</i>	57.46	42.54	20.19	7.03	0.96	0.00
One Year Ago <i>02-06-2018</i>	9.76	90.24	64.88	29.56	11.79	0.00

Intensity:

- D0 Abnormally Dry
- D1 Moderate Drought
- D2 Severe Drought
- D3 Extreme Drought
- D4 Exceptional Drought

The Drought Monitor focuses on broad-scale conditions. Local conditions may vary. See accompanying text summary for forecast statements.

Author:

Richard Tinker
CPC/NOAA/NWS/NCEP



Source: National Drought Mitigation Center, a partnership with USDA, U.S. Department of Commerce/NOAA, <http://droughtmonitor.unl.edu>.