



# Texas Crop Progress and Condition

Southern Plains Regional Field Office  
Post Office Box 70 Austin, Texas 78767  
(800) 626-3142 · FAX (855) 270-2725 · www.nass.usda.gov/tx

Issue: TX-CW0519

Weekly Summary for February 25-March 3

Released: March 4, 2019

Last week started off warm and dry, but turned colder late in the week. Precipitation in East Texas, the Upper Coast and the Coastal Bend ranged from 0.2 to 1.5 inches with areas of the Upper Coast receiving upwards of 4 inches. The rest of the state recorded little to no precipitation. There were 5.3 days suitable for fieldwork.

**Small Grains:** Non irrigated winter wheat in the Plains remained in fair to poor conditions due to cool, dry and windy weather. The weather also slowed the growth of small grains in the Cross Timbers and the Blacklands. Small grains in the Edwards Plateau were in need of moisture. Small grain crops continued to progress in South Texas with producers applying irrigation as needed.

**Row Crops:** Corn planting was active in the Blacklands, South Texas, the Coastal Bend, South Central Texas, and the Upper Coast. Field preparations were underway in anticipation of corn, sorghum and cotton planting in the Edwards Plateau. Sorghum planting continued in South Texas and the Coastal Bend.

**Fruit, Vegetable and Specialty Crops:** Pear and peach trees were blooming in the Trans-Pecos. Producers in South Texas completed potato planting and continued cabbage and spinach harvest. Sugarcane harvest continued in the Lower Valley.

**Livestock, Range and Pasture:** Livestock condition across the state was mostly fair to good. Cold, windy weather caused health problems in some areas of the Low Plains. Use of supplemental feed increased in many parts of the state. Pasture and range condition was rated 67 percent fair to good with many areas of the state in need of spring precipitation.

## Crop Progress

Stage	Percent of Acreage			
	Current Week	Previous Week	Previous Year	5 Year Average
Corn	5	(NA)	11	8
Sorghum	10	(NA)	16	6

(NA) Not available.

## Crop Condition

Crop	Percent of Acreage					Index <sup>1</sup>	
	Excellent	Good	Fair	Poor	Very Poor	2019	2018
Wheat	8	28	40	19	5	63	34
Oats	2	35	35	6	22	57	52
Range and Pasture	5	30	37	21	7	--	--

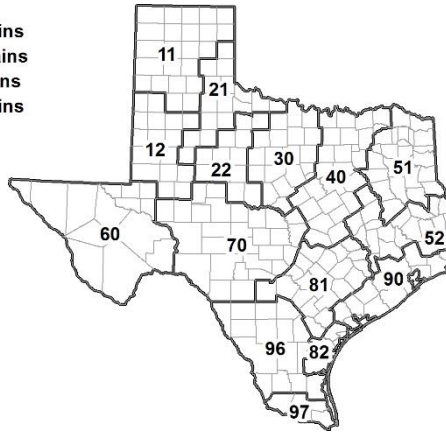
<sup>1</sup> The formula for the condition index is  $I = (5V + 25P + 60F + 90G + 110E)/100$  where I = crop condition index and V, P, F, G, E = percentage of crop rated very poor, poor, fair, good, excellent.

### Soil Moisture and Days Suitable by District

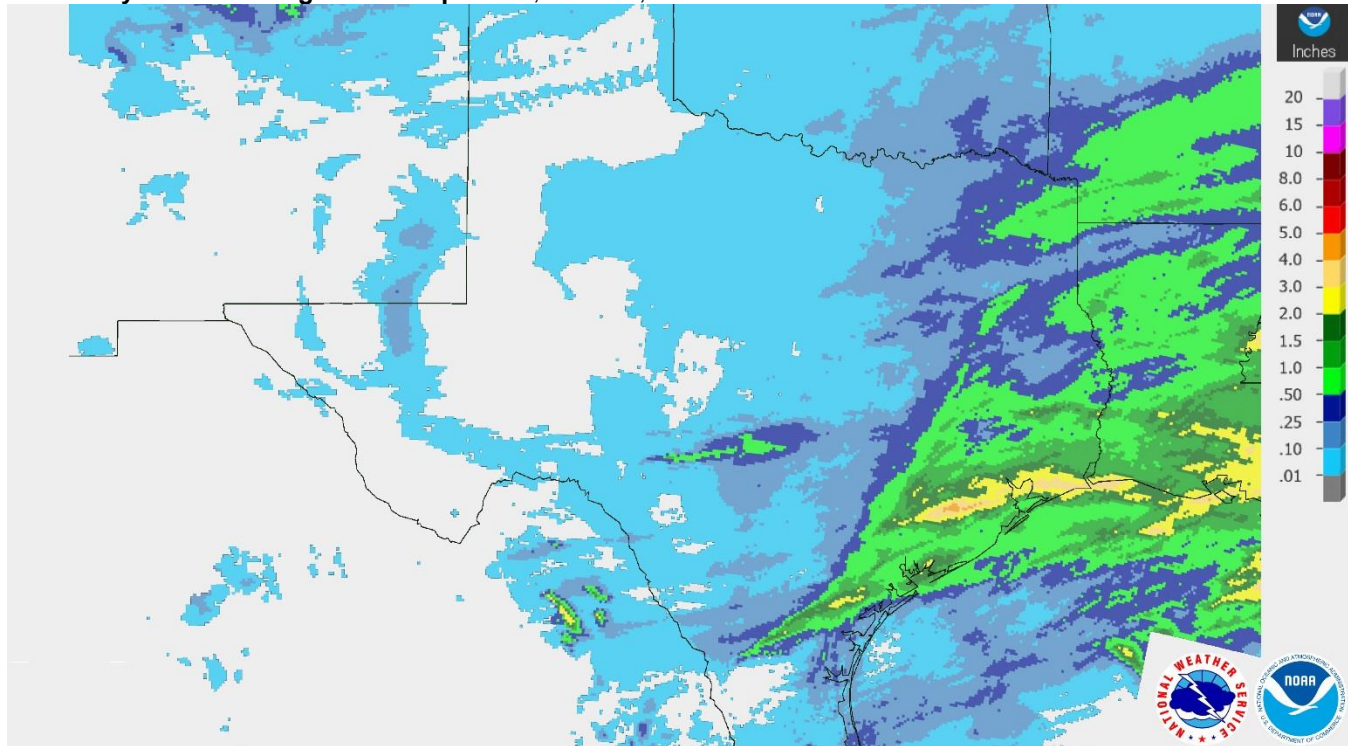
District	Topsoil Moisture Condition by District				Subsoil Moisture Condition by District				Days Suitable for Fieldwork
	Percentage of Acreage				Percentage of Acreage				
	Very Short	Short	Adequate	Surplus	Very Short	Short	Adequate	Surplus	
11	36	35	29	0	21	38	41	0	6.1
12	39	32	28	1	39	16	44	1	6.5
21	27	37	34	2	9	45	45	1	6.4
22	4	32	54	10	2	11	77	10	6.2
30	4	9	83	4	2	5	89	4	5.6
40	0	3	63	34	0	1	54	45	3.3
51	0	0	36	64	0	0	31	69	5.0
52	0	0	65	35	0	0	53	47	5.0
60	96	3	1	0	96	3	1	0	6.1
70	2	55	42	1	1	20	72	7	6.9
81	0	11	56	33	1	11	67	21	3.8
82	0	3	76	21	0	3	76	21	3.6
90	0	0	14	86	0	0	21	79	0.9
96	3	44	53	0	17	29	54	0	6.3
97	20	60	20	0	20	60	20	0	5.4
State	18	24	42	16	14	19	50	17	5.3

### Texas Agricultural Districts

- 11 Northern High Plains
- 12 Southern High Plains
- 21 Northern Low Plains
- 22 Southern Low Plains
- 30 Cross Timbers
- 40 Blacklands
- 51 North East
- 52 South East
- 60 Trans-Pecos
- 70 Edwards Plateau
- 81 South Central
- 82 Coastal Bend
- 90 Upper Coast
- 96 South
- 97 Lower Valley

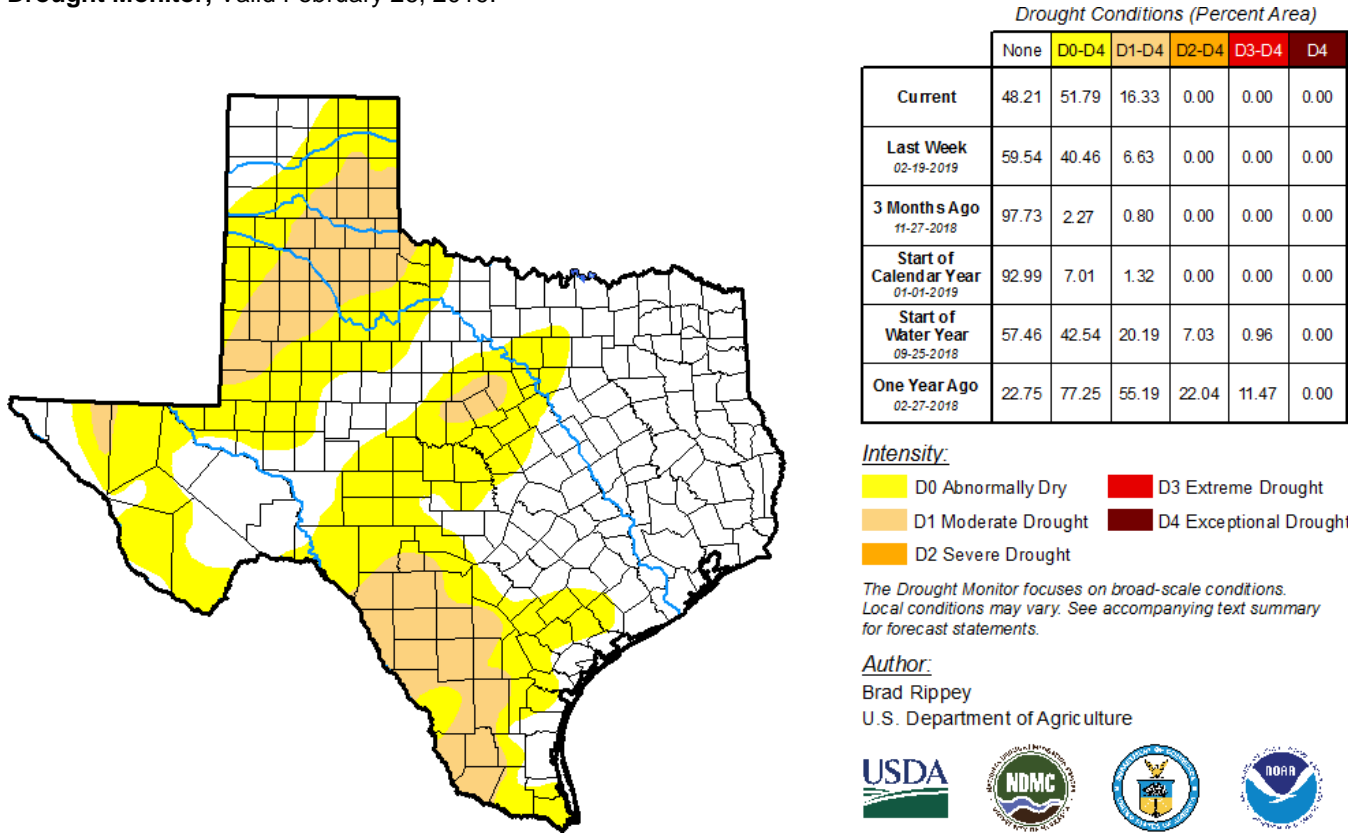


**Seven Day Observed Regional Precipitation, March 3, 2019.**



Source: National Weather Service, [www.nws.noaa.gov](http://www.nws.noaa.gov).

**Drought Monitor, Valid February 26, 2019.**



Source: National Drought Mitigation Center, a partnership with USDA, U.S. Department of Commerce/NOAA, <http://droughtmonitor.unl.edu>.

# Thank You for responding to the 2017 Census of Agriculture!

*Results April 11, 2019*



*For more information about the census and its special studies, visit [www.nass.usda.gov/AgCensus](http://www.nass.usda.gov/AgCensus)*