



Texas Crop Progress and Condition

Southern Plains Regional Field Office
Post Office Box 70 Austin, Texas 78767
(800) 626-3142 · FAX (855) 270-2725 · www.nass.usda.gov/tx

Issue: TX-CW0619

Weekly Summary for March 4-10

Released: March 11, 2019

Last week started off cold and dry, but turned warmer late in the week. Precipitation ranged from trace amounts to 1.5 inches in North East Texas, the Blacklands, the Cross Timbers, the Northern Low Plains and the Trans-Pecos. Areas of North East Texas reported upwards of 3 inches. The rest of the state recorded little to no precipitation. There were 5.8 days suitable for fieldwork.

Small Grains: Winter wheat in areas of the High Plains, the Southern Low Plains and the Edwards Plateau were still in need of moisture. Development of some small grains in the Cross Timbers was stunted by cold temperatures. Producers were applying fertilizer to small grains in the Blacklands.

Row Crops: Corn planting was active in the Cross Timbers, South Central Texas, the Coastal Bend and South Texas. Meanwhile, planting was halted in the Blacklands due to cold temperatures. Producers were concerned that forecast precipitation would further delay planting. Corn and sorghum were emerging and cotton planting was underway in the Coastal Bend.

Fruit, Vegetable and Specialty Crops: Fruit trees were in full bloom in the Edwards Plateau. Harvest of spinach and cabbage remained active in South Texas. Producers were irrigating pecans in the Trans-Pecos. Damage to fruits and vegetables due to freezing temperatures was still being assessed across the state. Sugarcane harvest continued in the Lower Valley.

Livestock, Range and Pasture: Livestock condition across the state was mostly fair to good. Cattle in the Blacklands were showing stress due to widely fluctuating temperatures. Producers in North East Texas were short on hay. Use of supplemental feed continued across much of the state. Pasture and range condition was rated 67 percent fair to good.

Crop Progress

Stage	Percent of Acreage			
	Current Week	Previous Week	Previous Year	5 Year Average
Corn	11	5	24	16
Sorghum	11	10	18	11

Crop Condition

Crop	Percent of Acreage					Index ¹	
	Excellent	Good	Fair	Poor	Very Poor	2019	2018
Wheat	1	27	42	23	7	57	40
Oats	2	31	41	8	18	58	54
Range and Pasture	6	30	37	20	7	--	--

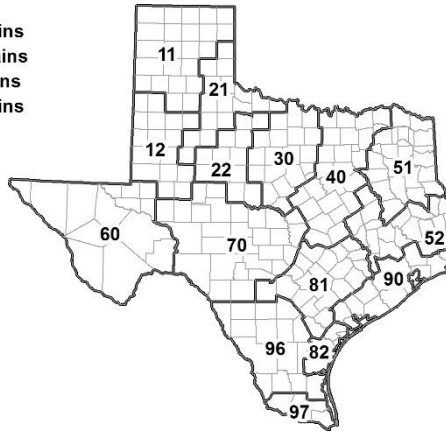
¹ The formula for the condition index is $I = (5V + 25P + 60F + 90G + 110E)/100$ where I = crop condition index and V, P, F, G, E = percentage of crop rated very poor, poor, fair, good, excellent.

Soil Moisture and Days Suitable by District

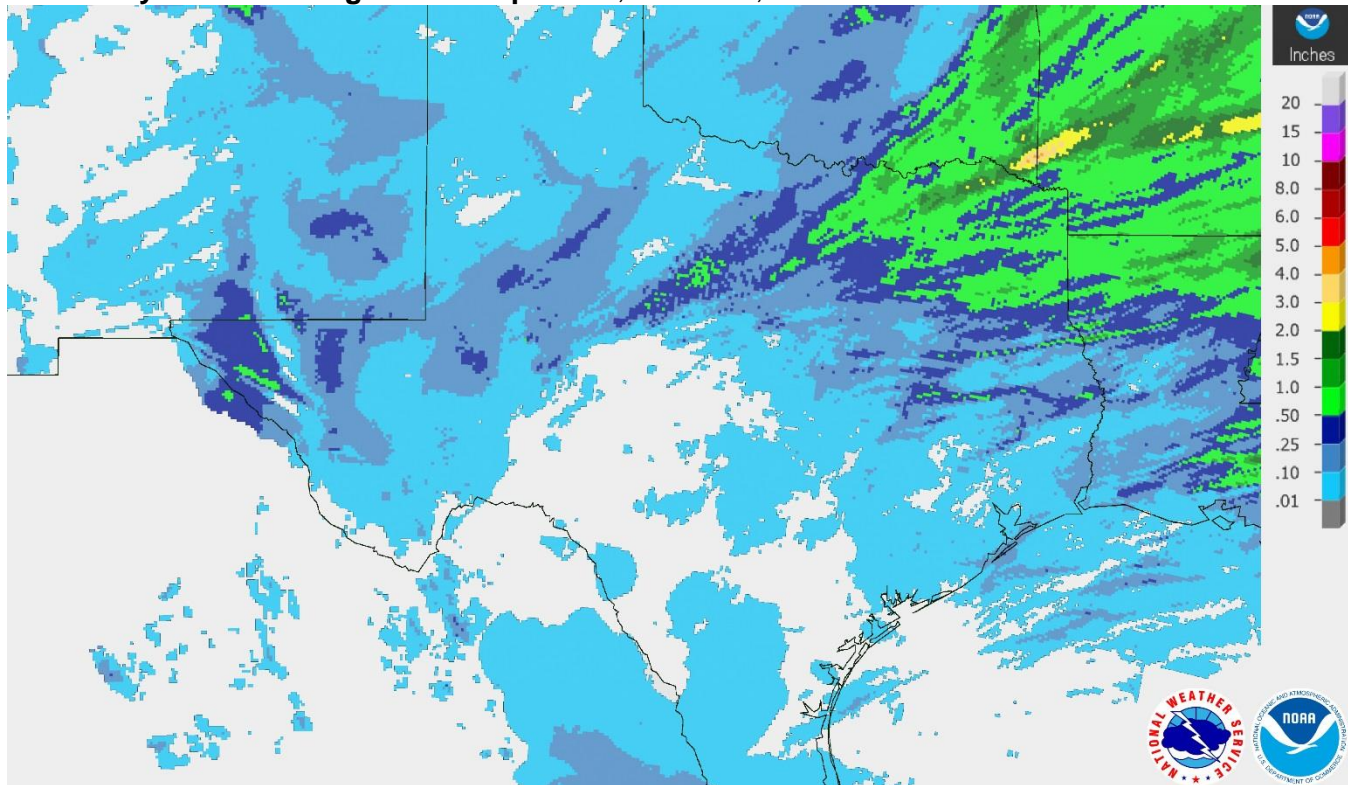
District	Topsoil Moisture Condition by District				Subsoil Moisture Condition by District				Days Suitable for Fieldwork
	Percentage of Acreage				Percentage of Acreage				
	Very Short	Short	Adequate	Surplus	Very Short	Short	Adequate	Surplus	
11	41	37	22	0	15	52	33	0	6.0
12	38	31	29	2	38	16	44	2	6.5
21	42	37	19	2	13	53	34	0	6.6
22	4	43	49	4	2	17	74	7	6.7
30	4	10	84	2	3	6	89	2	5.8
40	0	3	69	28	0	0	64	36	4.2
51	0	1	45	54	0	0	45	55	6.2
52	1	7	52	40	1	7	55	37	5.6
60	76	1	23	0	76	1	23	0	6.5
70	6	53	40	1	1	28	70	1	6.6
81	1	14	70	15	1	7	88	4	4.8
82	0	10	80	10	0	3	87	10	5.7
90	0	0	20	80	0	0	15	85	2.2
96	18	30	52	0	18	28	54	0	6.7
97	20	60	20	0	20	60	20	0	7.0
State	20	26	41	13	13	23	50	14	5.8

Texas Agricultural Districts

- 11 Northern High Plains
- 12 Southern High Plains
- 21 Northern Low Plains
- 22 Southern Low Plains
- 30 Cross Timbers
- 40 Blacklands
- 51 North East
- 52 South East
- 60 Trans-Pecos
- 70 Edwards Plateau
- 81 South Central
- 82 Coastal Bend
- 90 Upper Coast
- 96 South
- 97 Lower Valley

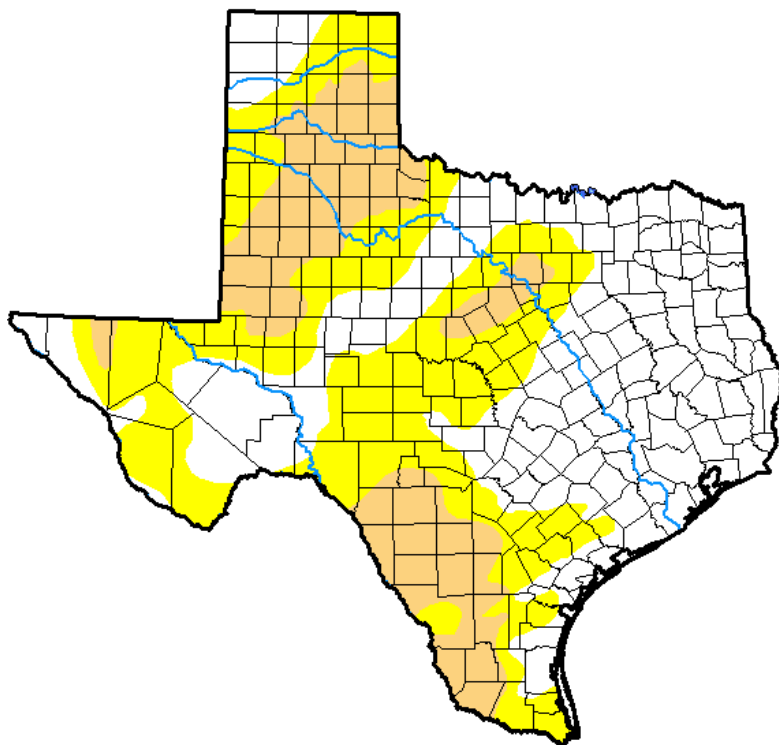


Seven Day Observed Regional Precipitation, March 10, 2019.



Source: National Weather Service, www.nws.noaa.gov.

Drought Monitor, Valid March 5, 2019.



Drought Conditions (Percent Area)

	None	D0-D4	D1-D4	D2-D4	D3-D4	D4
Current	45.94	54.06	19.92	0.00	0.00	0.00
Last Week <i>02-26-2019</i>	48.21	51.79	16.33	0.00	0.00	0.00
3 Months Ago <i>12-04-2018</i>	96.13	3.87	0.80	0.00	0.00	0.00
Start of Calendar Year <i>01-01-2019</i>	92.99	7.01	1.32	0.00	0.00	0.00
Start of Water Year <i>09-25-2018</i>	57.46	42.54	20.19	7.03	0.96	0.00
One Year Ago <i>03-06-2018</i>	25.76	74.24	54.22	21.74	14.16	0.00

Intensity:

- D0 Abnormally Dry
- D1 Moderate Drought
- D2 Severe Drought
- D3 Extreme Drought
- D4 Exceptional Drought

The Drought Monitor focuses on broad-scale conditions. Local conditions may vary. See accompanying text summary for forecast statements.

Author:

Eric Luebehusen
U.S. Department of Agriculture



Source: National Drought Mitigation Center, a partnership with USDA, U.S. Department of Commerce/NOAA, <http://droughtmonitor.unl.edu>.



Thank You for responding to the 2017 Census of Agriculture!

Results April 11, 2019

For more information about the census and its special studies, visit www.nass.usda.gov/AgCensus