



Texas Crop Progress and Condition

Southern Plains Regional Field Office
Post Office Box 70 Austin, Texas 78767
(800) 626-3142 · FAX (855) 270-2725 · www.nass.usda.gov/tx

Issue: TX-CW0719

Weekly Summary for March 11-17

Released: March 18, 2019

Cool, windy conditions were experienced across much of the state last week. Precipitation in the Plains, the Cross Timbers, the Blacklands, East Texas, and the Edwards Plateau ranged from 0.5 to 1.5 inches, with isolated areas in South East Texas getting upwards of 2 inches. The rest of the state recorded little to no precipitation. There were 4.7 days suitable for fieldwork.

Small Grains: Winter wheat condition in the Plains varied widely, ranging from poor to excellent. Freeze damage was detected in some small grain fields in the Cross Timbers. Wheat development progressed well in the Blacklands and the Edwards Plateau thanks to the recent showers.

Row Crops: Field activities continued in the High Plains in preparation of the upcoming planting of row crops. Corn planting began in the Southern Low Plains and continued in the Blacklands, the Cross Timbers, South Central Texas, the Upper Coast and South Texas. Corn and sorghum were emerging in the Coastal Bend. Sorghum and cotton plantings were ongoing in the Coastal Bend and South Texas.

Fruit, Vegetable and Specialty Crops: Producers continued planting vegetables in South East Texas and South Texas with growth of carrots and onions progressing well. Spinach and cabbage harvest continued in South Texas, while sugarcane harvest continued in the Lower Valley.

Livestock, Range and Pasture: Livestock condition across the state remained mostly fair to good. Use of supplemental feed continued across much of the state. Some cattle producers in the Northern Low Plains were considering the possibility of downsizing herds due to overgrazing pastures during the winter. Also, sheep producers were busy with lambing duties. Pasture and range condition was rated 70 percent fair to good.

Crop Progress

Stage	Percent of Acreage			
	Current Week	Previous Week	Previous Year	5 Year Average
Corn				
Planted	26	11	34	23
Sorghum				
Planted	19	11	24	17

Crop Condition

Crop	Percent of Acreage					Index ¹	
	Excellent	Good	Fair	Poor	Very Poor	2019	2018
Wheat	6	27	44	17	6	62	35
Oats	3	34	42	7	14	62	55
Range and Pasture	5	32	38	19	6	--	--

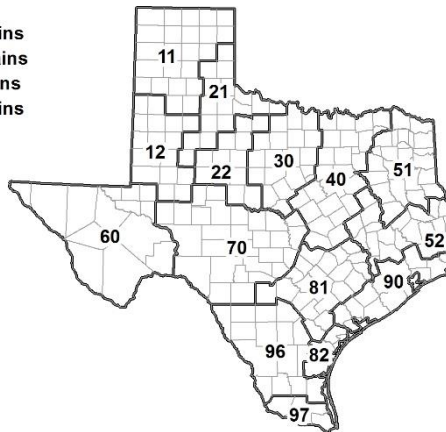
¹ The formula for the condition index is $I = (5V + 25P + 60F + 90G + 110E)/100$ where I = crop condition index and V, P, F, G, E = percentage of crop rated very poor, poor, fair, good, excellent.

Soil Moisture and Days Suitable by District

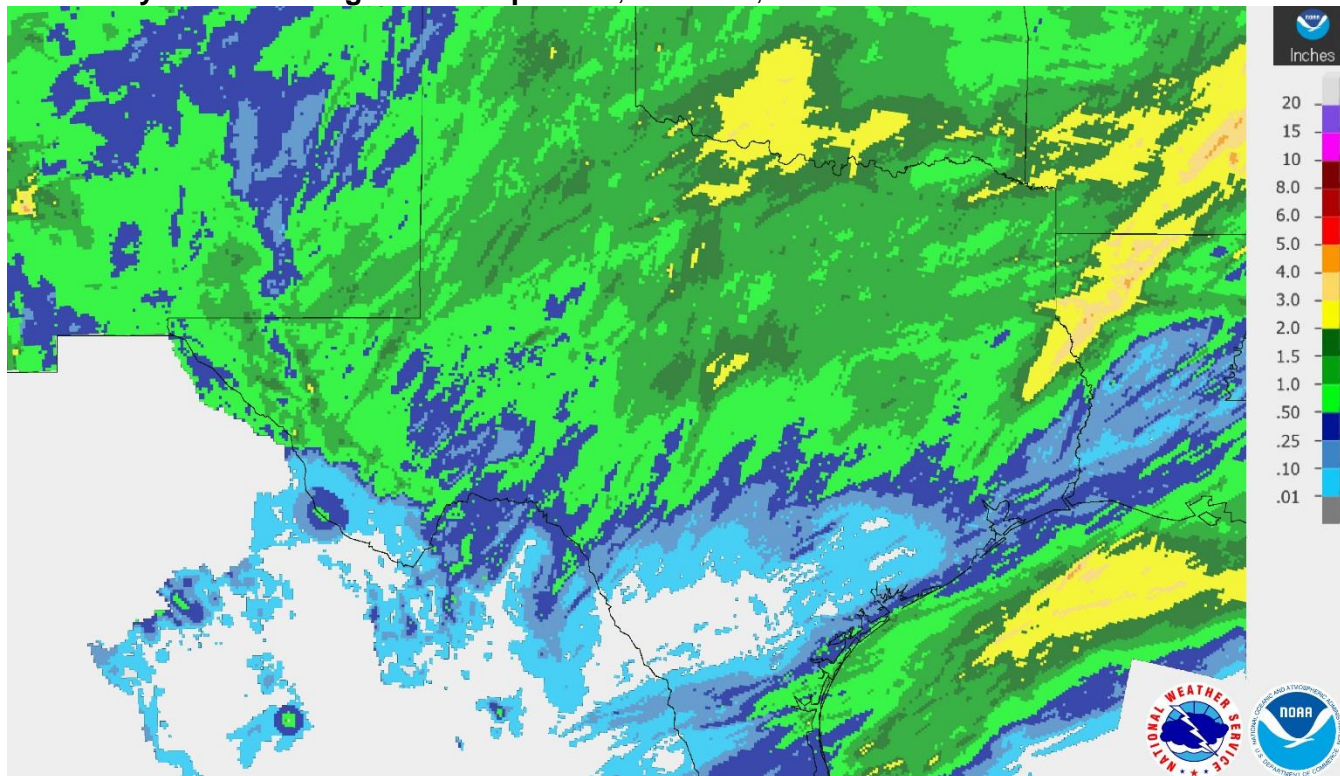
District	Topsoil Moisture Condition by District				Subsoil Moisture Condition by District				Days Suitable for Fieldwork
	Percentage of Acreage				Percentage of Acreage				
	Very Short	Short	Adequate	Surplus	Very Short	Short	Adequate	Surplus	
11	20	20	60	0	10	35	55	0	4.1
12	4	60	35	1	3	36	56	5	4.7
21	20	35	44	1	9	42	49	0	4.9
22	3	25	63	9	2	10	83	5	4.6
30	1	3	91	5	1	4	91	4	5.1
40	0	1	59	40	0	1	50	49	3.3
51	0	3	56	41	0	3	57	40	6.2
52	1	7	63	29	1	7	62	30	6.1
60	33	24	43	0	37	22	41	0	5.8
70	4	15	74	7	2	21	70	7	6.6
81	1	23	54	22	1	8	80	11	5.2
82	0	13	85	2	0	3	93	4	5.0
90	0	1	45	54	0	1	28	71	3.4
96	16	35	49	0	16	31	53	0	6.5
97	20	60	20	0	20	60	20	0	7.0
State	8	25	54	13	5	22	59	14	4.7

Texas Agricultural Districts

- 11 Northern High Plains
- 12 Southern High Plains
- 21 Northern Low Plains
- 22 Southern Low Plains
- 30 Cross Timbers
- 40 Blacklands
- 51 North East
- 52 South East
- 60 Trans-Pecos
- 70 Edwards Plateau
- 81 South Central
- 82 Coastal Bend
- 90 Upper Coast
- 96 South
- 97 Lower Valley

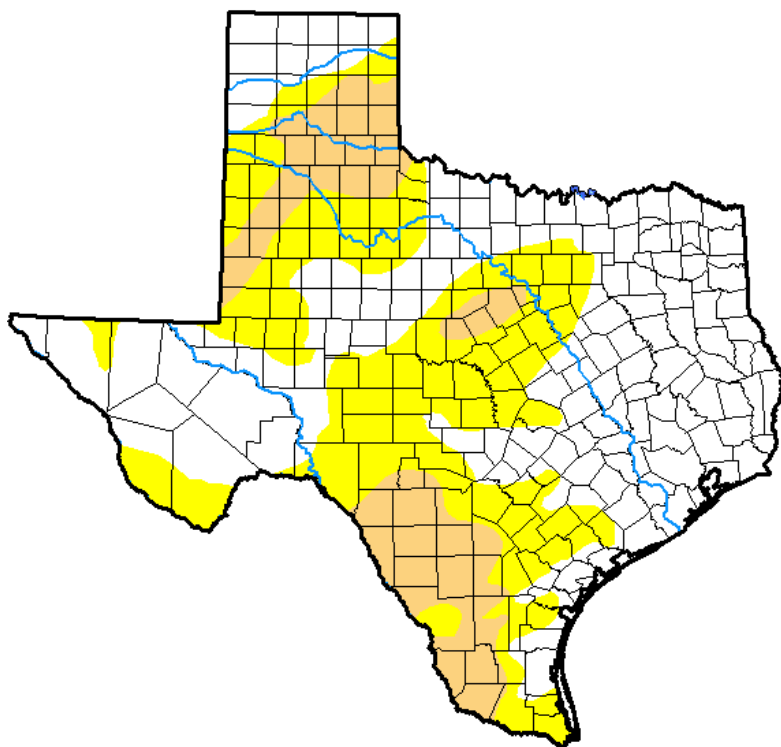


Seven Day Observed Regional Precipitation, March 17, 2019.



Source: National Weather Service, www.nws.noaa.gov.

Drought Monitor, Valid March 12, 2019.



Drought Conditions (Percent Area)

	None	D0-D4	D1-D4	D2-D4	D3-D4	D4
Current	52.86	47.14	14.69	0.00	0.00	0.00
Last Week <i>03-05-2019</i>	45.94	54.06	19.92	0.00	0.00	0.00
3 Months Ago <i>12-11-2018</i>	96.30	3.70	0.80	0.00	0.00	0.00
Start of Calendar Year <i>01-01-2019</i>	92.99	7.01	1.32	0.00	0.00	0.00
Start of Water Year <i>09-25-2018</i>	57.46	42.54	20.19	7.03	0.96	0.00
One Year Ago <i>03-13-2018</i>	24.83	75.17	54.19	22.29	14.19	0.00

Intensity:

- D0 Abnormally Dry
- D1 Moderate Drought
- D2 Severe Drought
- D3 Extreme Drought
- D4 Exceptional Drought

The Drought Monitor focuses on broad-scale conditions. Local conditions may vary. See accompanying text summary for forecast statements.

Author:

Jessica Blunden
NCEI/NOAA



Source: National Drought Mitigation Center, a partnership with USDA, U.S. Department of Commerce/NOAA, <http://droughtmonitor.unl.edu>.

Thank You for responding to the 2017 Census of Agriculture!

Results April 11, 2019



For more information about the census and its special studies, visit www.nass.usda.gov/AgCensus