



Texas Crop Progress and Condition

Southern Plains Regional Field Office
Post Office Box 70 Austin, Texas 78767
(800) 626-3142 · FAX (855) 270-2725 · www.nass.usda.gov/tx

Issue: TX-CW0819

Weekly Summary for March 18-24

Released: March 25, 2019

Much of the state experienced warmer temperatures during the past week. Precipitation ranging from 0.5 to 2.0 inches was reported in the Northern Plains, North East Texas, the Blacklands, and the Trans-Pecos. However, the rest of the state recorded little to no rainfall. Areas of severe drought were developing in South Texas. There were 5.8 days suitable for fieldwork.

Small Grains: Wheat producers continued to apply irrigation, fertilizer, and weed control in areas of the Northern High Plains. Recent rains and warmer temperatures improved wheat condition in the Low Plains. Freeze damage was reported in wheat in areas of South Central Texas. Wheat was in the heading stage in the Coastal Bend and South Texas. Small grains condition was mostly good in the Blacklands, the Cross Timbers and the Edwards Plateau.

Row Crops: Field work in preparation for cotton planting was active in the Low Plains, South East Texas, the Trans-Pecos and the Edwards Plateau. Meanwhile, cotton planting continued in the Coastal Bend, the Upper Coast and South Texas. Corn planting was ongoing in the Southern Low Plains, the Cross Timbers, the Blacklands and South Central Texas. Corn and sorghum were emerging in the Coastal Bend and the Blacklands. Producers continued planting sorghum in the Upper Coast and the Edwards Plateau. Rice was being planted in the Upper Coast.

Fruit, Vegetable and Specialty Crops: Some vegetable producers in South Texas were preparing fields for the next season, while others were already planting. Spinach harvest continued. Growth of onions and cabbage continued to progress.

Livestock, Range and Pasture: Livestock condition across the state remained mostly fair to good. Use of supplemental feed, while continuing, had decreased across much of the state. Wild hogs were still causing problems in North East Texas. Pasture and range condition was rated 73 percent fair to good.

Crop Condition

Crop	Percent of Acreage					Index ¹	
	Excellent	Good	Fair	Poor	Very Poor	2019	2018
Wheat	7	32	39	16	6	64	35
Oats	2	40	40	10	8	65	58
Range and Pasture	4	32	41	18	5	--	--

¹ The formula for the condition index is $I = (5V + 25P + 60F + 90G + 110E)/100$ where I = crop condition index and V, P, F, G, E = percentage of crop rated very poor, poor, fair, good, excellent.

Crop Progress

Stage	Percent of Acreage			
	Current Week	Previous Week	Previous Year	5 Year Average
Corn				
Planted	38	26	42	31
Emerged	12	(NA)	17	7
Cotton				
Planted	3	(NA)	7	3
Rice				
Planted	15	(NA)	44	16
Sorghum				
Planted	35	19	31	23
Winter Wheat				
Headed	1	(NA)	4	4
Oats				
Headed	2	(NA)	14	8

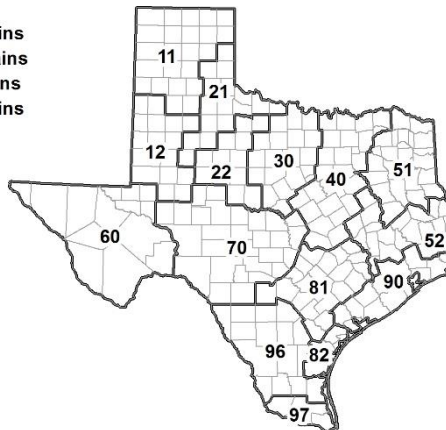
(NA) Not available.

Soil Moisture and Days Suitable by District

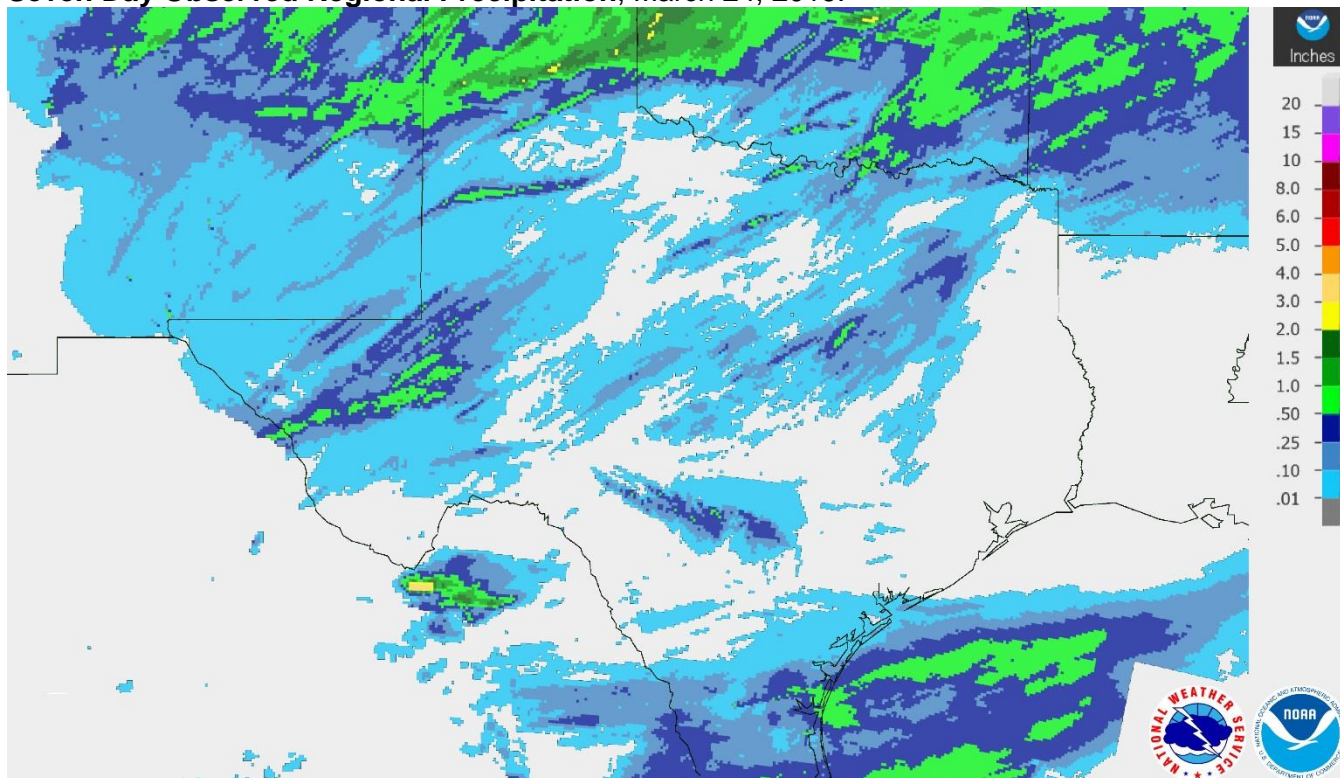
District	Topsoil Moisture Condition by District				Subsoil Moisture Condition by District				Days Suitable for Fieldwork
	Percentage of Acreage				Percentage of Acreage				
	Very Short	Short	Adequate	Surplus	Very Short	Short	Adequate	Surplus	
11	14	24	62	0	11	26	63	0	5.1
12	1	67	31	1	1	35	61	3	5.7
21	20	44	36	0	10	48	42	0	5.9
22	5	27	65	3	3	16	74	7	6.1
30	2	15	82	1	1	5	94	0	6.3
40	0	5	65	30	0	2	65	33	5.2
51	0	5	75	20	0	3	77	20	6.8
52	2	7	73	18	1	7	68	24	6.8
60	30	29	41	0	33	28	39	0	6.1
70	2	24	73	1	1	22	76	1	6.2
81	1	50	48	1	1	27	70	2	6.3
82	0	22	78	0	0	8	89	3	5.9
90	0	5	65	30	0	3	28	69	6.0
96	18	39	43	0	18	36	46	0	6.5
97	20	60	20	0	20	60	20	0	7.0
State	7	31	55	7	5	22	63	10	5.8

Texas Agricultural Districts

- 11 Northern High Plains
- 12 Southern High Plains
- 21 Northern Low Plains
- 22 Southern Low Plains
- 30 Cross Timbers
- 40 Blacklands
- 51 North East
- 52 South East
- 60 Trans-Pecos
- 70 Edwards Plateau
- 81 South Central
- 82 Coastal Bend
- 90 Upper Coast
- 96 South
- 97 Lower Valley

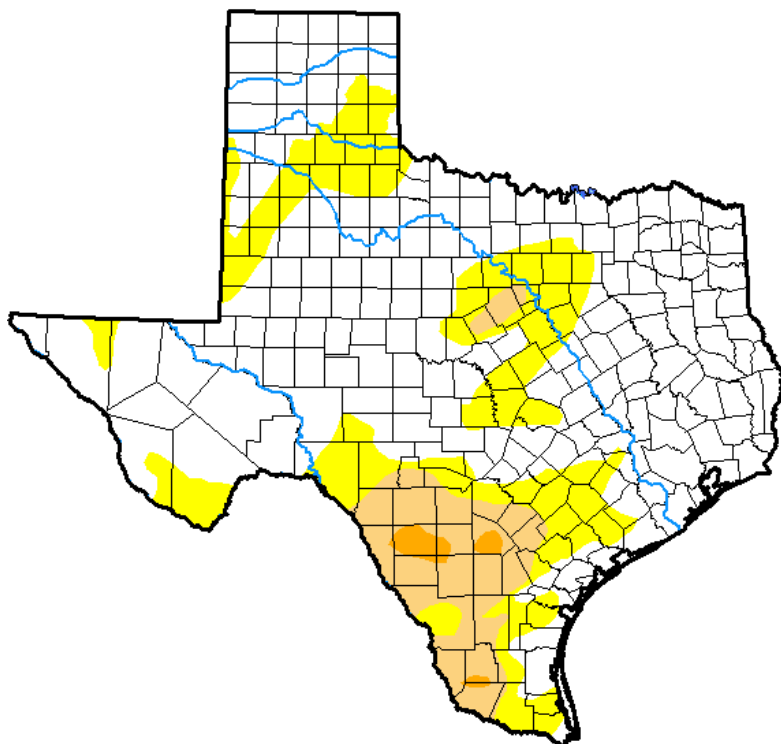


Seven Day Observed Regional Precipitation, March 24, 2019.



Source: National Weather Service, www.nws.noaa.gov.

Drought Monitor, Valid March 19, 2019.



Drought Conditions (Percent Area)

	None	D0-D4	D1-D4	D2-D4	D3-D4	D4
Current	69.05	30.95	9.67	0.90	0.00	0.00
Last Week <i>03-12-2019</i>	52.86	47.14	14.69	0.00	0.00	0.00
3 Months Ago <i>12-18-2018</i>	94.51	5.49	0.80	0.00	0.00	0.00
Start of Calendar Year <i>01-01-2019</i>	92.99	7.01	1.32	0.00	0.00	0.00
Start of Water Year <i>09-25-2018</i>	57.46	42.54	20.19	7.03	0.96	0.00
One Year Ago <i>03-20-2018</i>	25.50	74.50	61.14	25.84	15.08	0.00

Intensity:

- D0 Abnormally Dry
- D1 Moderate Drought
- D2 Severe Drought
- D3 Extreme Drought
- D4 Exceptional Drought

The Drought Monitor focuses on broad-scale conditions. Local conditions may vary. See accompanying text summary for forecast statements.

Author:

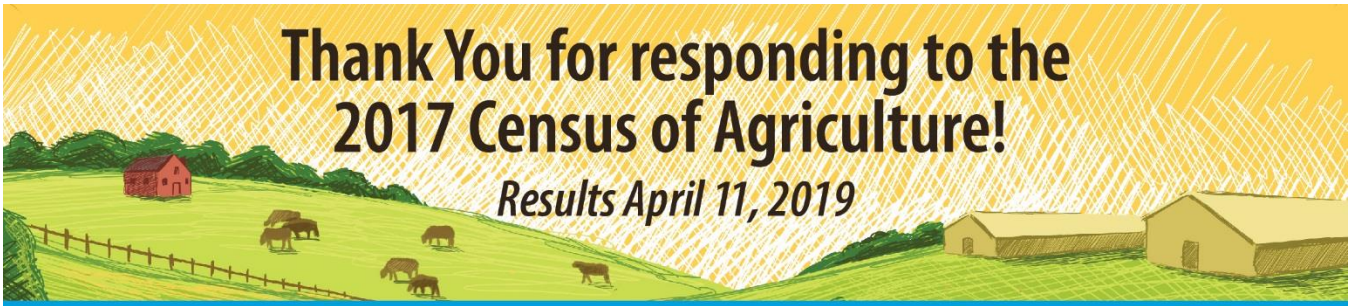
Jessica Blunden
NCEI/NOAA



Source: National Drought Mitigation Center, a partnership with USDA, U.S. Department of Commerce/NOAA, <http://droughtmonitor.unl.edu>.

Thank You for responding to the 2017 Census of Agriculture!

Results April 11, 2019



For more information about the census and its special studies, visit www.nass.usda.gov/AgCensus