



Texas Crop Progress and Condition

Southern Plains Regional Field Office
Post Office Box 70 Austin, Texas 78767
(800) 626-3142 · FAX (855) 270-2725 · www.nass.usda.gov/tx

Issue: TX-CW0919

Weekly Summary for March 25-31

Released: April 1, 2019

Mostly dry and warm weather prevailed across the state during the past week. The only significant rains were experienced in the Upper Coast, the Coastal Bend, South Texas and the Lower Valley, where precipitation ranged from trace amounts up to 2 inches. The rest of the state recorded little to no rainfall. There were 6.5 days suitable for fieldwork.

Small Grains: Wheat conditions improved in the High Plains. Some wheat fields in the Southern Low Plains showed signs of freeze damage. Rust was found in some fields in the Cross Timbers. Small grains were progressing in the Blacklands and the Edwards Plateau.

Row Crops: Producers in the Southern High Plains and the Northern Low Plains were preparing fields for planting season. Corn and sorghum planting continued in the Blacklands, the Edwards Plateau and the Upper Coast. Corn was emerging in the Cross Timbers, South Central Texas, the Blacklands, the Coastal Bend and South Texas. Alfalfa weevils were spotted in areas of the Trans-Pecos.

Fruit, Vegetable and Specialty Crops: Field preparation for vegetable planting continued in South Texas. Cabbage and spinach harvest were ongoing. Pecan growers were applying irrigation in the Trans-Pecos, meanwhile trees were beginning to leaf in the Edwards Plateau.

Livestock, Range and Pasture: Livestock condition across the state remained mostly fair to good. Use of supplemental feed was reported in the Northern High Plains, the Blacklands, North East Texas, South Central Texas, and South Texas. Sheep producers in the Northern Low Plains were lambing and had not encountered parasite issues. Feral hogs continued to cause concern in the Blacklands and North East Texas. Producers were working in conjunction with extension agents on control measures in some areas. Pasture and range condition was rated 77 percent fair to good.

Crop Progress

Stage	Percent of Acreage			
	Current Week	Previous Week	Previous Year	5 Year Average
Corn				
Planted	51	38	53	41
Emerged	25	12	25	15
Cotton				
Planted	7	3	11	5
Rice				
Planted	17	15	59	29
Emerged	0	(NA)	18	9
Sorghum				
Planted	43	35	41	31
Winter Wheat				
Headed	8	1	10	11
Oats				
Planted	19	(NA)	100	100
Emerged	18	(NA)	100	100
Headed	16	2	25	15

(NA) Not available.

Crop Condition

Crop	Percent of Acreage					Index ¹	
	Excellent	Good	Fair	Poor	Very Poor	2019	2018
Wheat	8	33	41	14	4	67	35
Oats	5	40	41	8	6	68	61
Range and Pasture	6	35	40	16	3	--	--

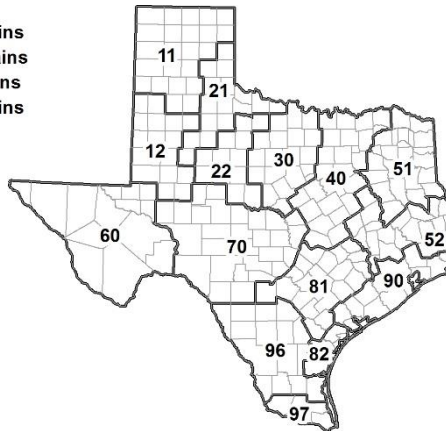
¹ The formula for the condition index is $I = (5V + 25P + 60F + 90G + 110E)/100$ where I = crop condition index and V, P, F, G, E = percentage of crop rated very poor, poor, fair, good, excellent.

Soil Moisture and Days Suitable by District

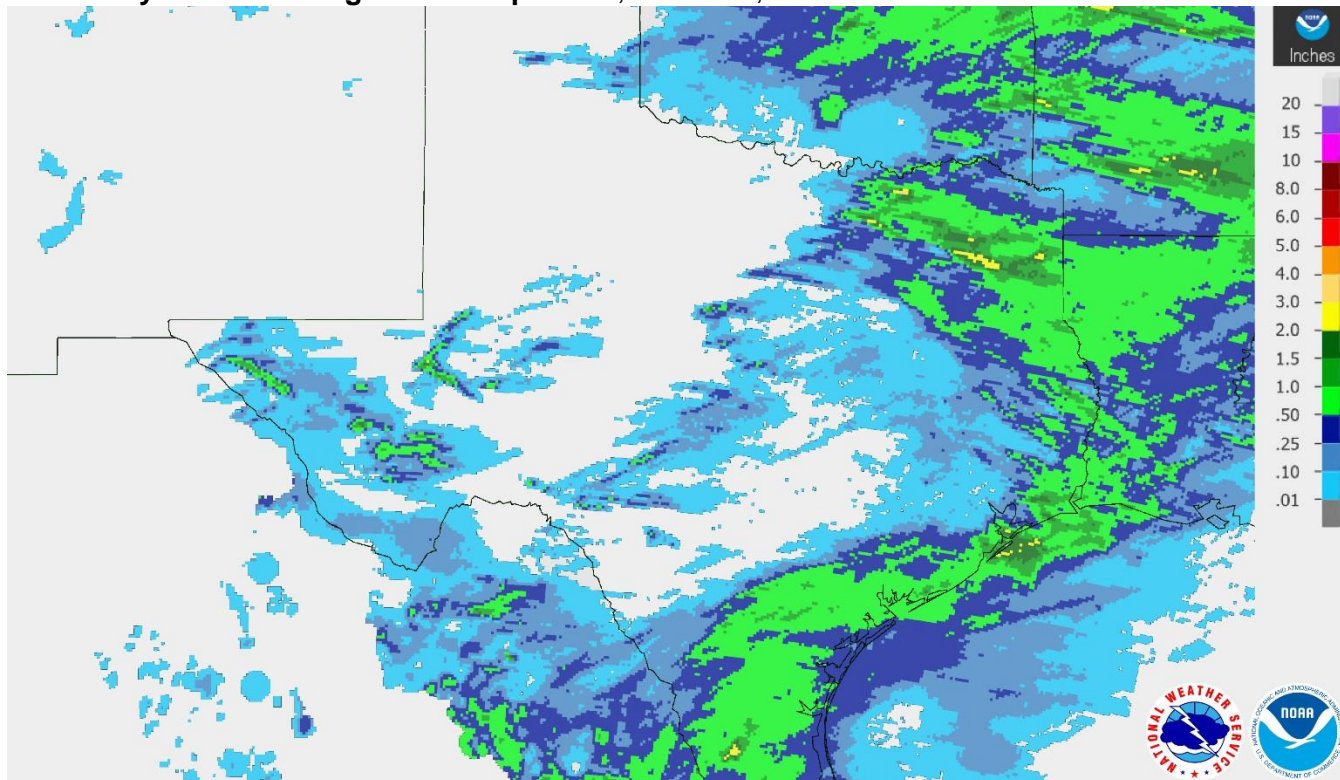
District	Topsoil Moisture Condition by District				Subsoil Moisture Condition by District				Days Suitable for Fieldwork
	Percentage of Acreage				Percentage of Acreage				
	Very Short	Short	Adequate	Surplus	Very Short	Short	Adequate	Surplus	
11	4	36	60	0	4	33	63	0	6.3
12	6	59	35	0	4	44	49	3	6.8
21	18	50	32	0	8	52	40	0	6.7
22	5	37	58	0	3	17	75	5	6.3
30	7	36	56	1	2	23	74	1	6.2
40	1	15	67	17	0	4	74	22	5.8
51	0	14	79	7	0	9	87	4	6.9
52	0	10	82	8	0	10	79	11	6.8
60	28	31	41	0	34	28	38	0	6.7
70	5	50	45	0	3	23	74	0	7.0
81	1	59	40	0	1	28	71	0	6.6
82	3	23	74	0	1	14	80	5	7.0
90	0	39	44	17	0	5	43	52	6.3
96	24	29	46	1	27	23	50	0	6.6
97	20	60	20	0	20	60	20	0	7.0
State	6	39	52	3	4	27	62	7	6.5

Texas Agricultural Districts

- 11 Northern High Plains
- 12 Southern High Plains
- 21 Northern Low Plains
- 22 Southern Low Plains
- 30 Cross Timbers
- 40 Blacklands
- 51 North East
- 52 South East
- 60 Trans-Pecos
- 70 Edwards Plateau
- 81 South Central
- 82 Coastal Bend
- 90 Upper Coast
- 96 South
- 97 Lower Valley

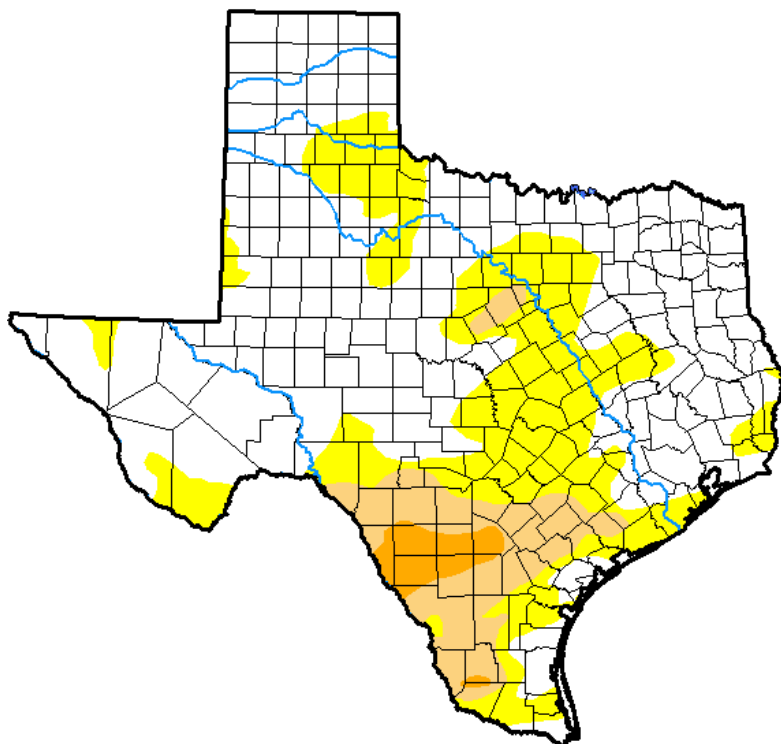


Seven Day Observed Regional Precipitation, March 31, 2019.



Source: National Weather Service, www.nws.noaa.gov.

Drought Monitor, Valid March 26, 2019.



Drought Conditions (Percent Area)

	None	D0-D4	D1-D4	D2-D4	D3-D4	D4
Current	61.92	38.08	11.44	2.38	0.00	0.00
Last Week <i>03-19-2019</i>	69.05	30.95	9.67	0.90	0.00	0.00
3 Months Ago <i>12-25-2018</i>	90.02	9.98	0.80	0.00	0.00	0.00
Start of Calendar Year <i>01-01-2019</i>	92.99	7.01	1.32	0.00	0.00	0.00
Start of Water Year <i>09-25-2018</i>	57.46	42.54	20.19	7.03	0.96	0.00
One Year Ago <i>03-27-2018</i>	26.19	73.81	64.23	28.30	15.08	1.21

Intensity:

- D0 Abnormally Dry
- D1 Moderate Drought
- D2 Severe Drought
- D3 Extreme Drought
- D4 Exceptional Drought

The Drought Monitor focuses on broad-scale conditions. Local conditions may vary. See accompanying text summary for forecast statements.

Author:

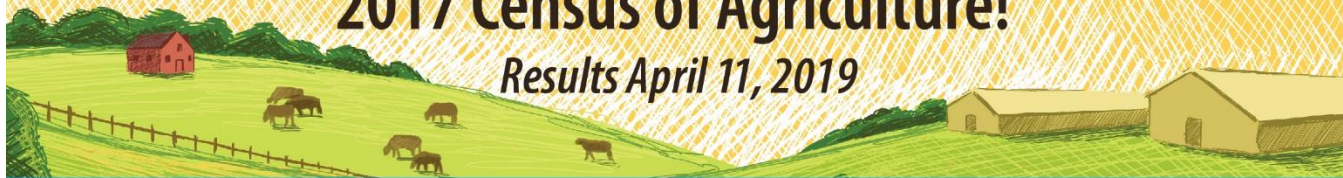
Eric Luebehusen
U.S. Department of Agriculture



Source: National Drought Mitigation Center, a partnership with USDA, U.S. Department of Commerce/NOAA, <http://droughtmonitor.unl.edu>.

Thank You for responding to the 2017 Census of Agriculture!

Results April 11, 2019



For more information about the census and its special studies, visit www.nass.usda.gov/AgCensus