



# Texas Crop Progress and Condition

Southern Plains Regional Field Office  
Post Office Box 70 Austin, Texas 78767  
(800) 626-3142 · FAX (855) 270-2725 · www.nass.usda.gov/tx

**Issue: TX-CW1119**

**Weekly Summary for April 8 - 14**

**Released: April 15, 2019**

Early in the week most of the state experienced warm and windy conditions. A strong storm system moved through the state late in the week bringing severe weather, cooler temperatures and moderate precipitation to many areas. Precipitation in the Low Plains, the Cross Timbers, the Blacklands, South Central, and East Texas ranged from 1 to upwards of 5 inches. Rainfall in the rest of the state ranged from traces amounts up to 1 inch. There were 5.7 days suitable for fieldwork.

**Small Grains:** Wheat continued to progress in the Northern High Plains. Small grains in the Northern Low Plains, the Blacklands and the Edwards Plateau were in the heading stage. Wheat in South Texas was turning color.

**Row Crops:** Corn planting was underway in the Northern Low Plains. Corn and Sorghum were emerging in the Southern High Plains and progressed in the Blacklands, the Coastal Bend, the Upper Coast and South Texas. Insects damaged corn and sorghum in areas of South Texas. Field preparation for cotton planting was ongoing in the Southern Low Plains, while cotton planting was underway in the Blacklands and the Trans-Pecos. Rice planting continued in South Central Texas and the Upper Coast.

**Fruit, Vegetable and Specialty Crops:** Pecans were progressing in the Southern High Plains and the Trans-Pecos. Vegetable planting was underway in the Edwards Plateau. Melon and vegetables planting was active in South Texas, while cabbage harvest was completed this past week.

**Livestock, Range and Pasture:** Livestock condition remained mostly good to fair across the state. Variable temperatures were affecting the livestock in the Northern Low Plains. Newborn calves were lost due to baseball size hail in North East Texas. The reported use of supplemental feed was minimal. Pasture and range condition continued benefitting from precipitation and warmer temperatures, and was rated mostly fair to good.

## Crop Progress

Stage	Percent of Acreage			
	Current Week	Previous Week	Previous Year	5 Year Average
<b>Corn</b>				
Planted	57	53	60	54
Emerged	40	32	43	38
<b>Cotton</b>				
Planted	11	9	13	10
<b>Rice</b>				
Planted	55	38	69	64
Emerged	26	9	53	41
<b>Sorghum</b>				
Planted	55	47	63	51
<b>Winter Wheat</b>				
Headed	27	15	37	32
<b>Oats</b>				
Headed	45	26	63	39

### Crop Condition

Crop	Percent of Acreage					Index <sup>1</sup>	
	Excellent	Good	Fair	Poor	Very Poor	2019	2018
Wheat	8	43	35	11	3	71	36
Oats	7	46	39	5	3	74	57
Range and Pasture	7	37	43	10	3	--	--

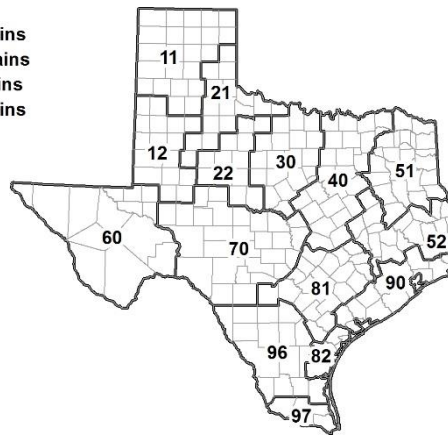
<sup>1</sup> The formula for the condition index is  $I = (5V + 25P + 60F + 90G + 110E)/100$  where I = crop condition index and V, P, F, G, E = percentage of crop rated very poor, poor, fair, good, excellent.

### Soil Moisture and Days Suitable by District

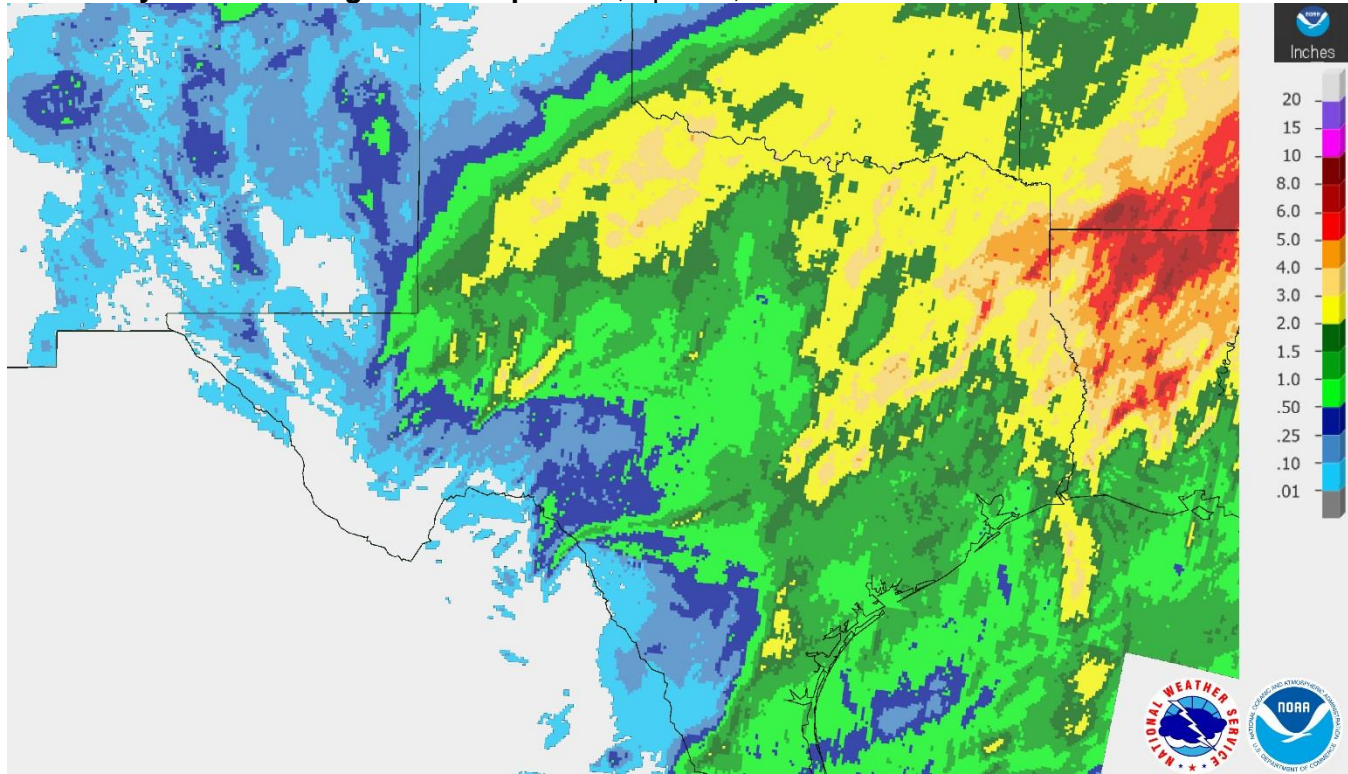
District	Topsoil Moisture Condition by District				Subsoil Moisture Condition by District				Days Suitable for Fieldwork
	Percentage of Acreage				Percentage of Acreage				
	Very Short	Short	Adequate	Surplus	Very Short	Short	Adequate	Surplus	
11	2	44	54	0	2	37	61	0	5.9
12	6	47	42	5	4	45	48	3	6.2
21	3	49	45	3	4	40	55	1	5.6
22	0	15	69	16	0	12	77	11	6.2
30	4	26	63	7	2	25	72	1	5.8
40	0	2	62	36	0	4	62	34	3.6
51	0	2	68	30	0	0	66	34	5.8
52	0	8	62	30	0	5	67	28	4.6
60	36	16	48	0	45	8	47	0	6.5
70	7	60	28	5	5	19	76	0	6.8
81	0	49	49	2	0	37	61	2	5.5
82	0	5	38	57	0	5	75	20	6.3
90	9	20	66	5	3	12	67	18	5.7
96	13	33	52	2	18	25	55	2	4.7
97	20	60	20	0	20	60	20	0	7.0
State	4	32	53	11	4	27	60	9	5.7

### Texas Agricultural Districts

- 11 Northern High Plains
- 12 Southern High Plains
- 21 Northern Low Plains
- 22 Southern Low Plains
- 30 Cross Timbers
- 40 Blacklands
- 51 North East
- 52 South East
- 60 Trans-Pecos
- 70 Edwards Plateau
- 81 South Central
- 82 Coastal Bend
- 90 Upper Coast
- 96 South
- 97 Lower Valley

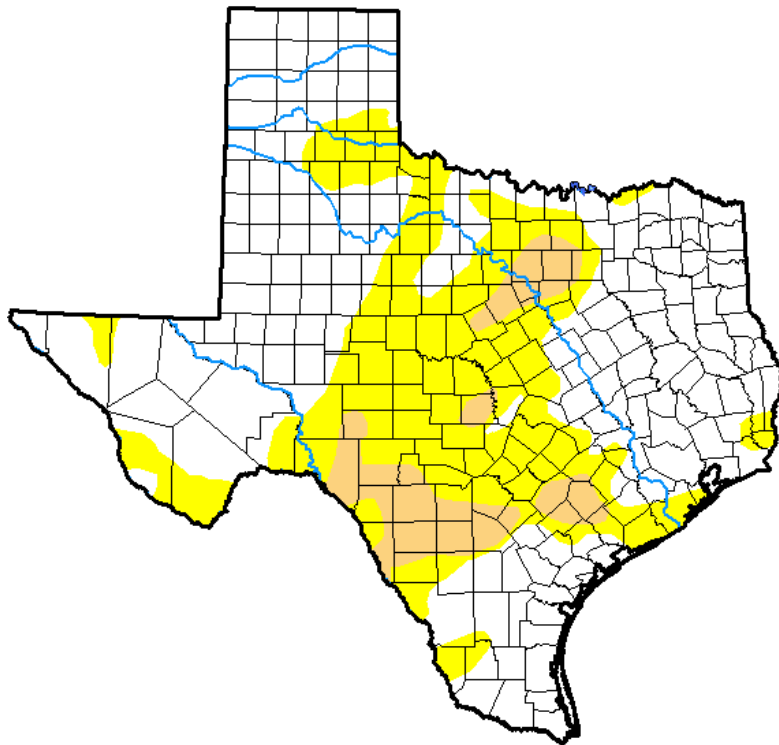


**Seven Day Observed Regional Precipitation, April 14, 2019.**



Source: National Weather Service, [www.nws.noaa.gov](http://www.nws.noaa.gov).

**Drought Monitor, Valid April 9, 2019.**



*Drought Conditions (Percent Area)*

	None	D0-D4	D1-D4	D2-D4	D3-D4	D4
<b>Current</b>	61.20	38.80	7.83	0.00	0.00	0.00
<b>Last Week</b> <i>04-02-2019</i>	54.27	45.73	12.20	2.61	0.00	0.00
<b>3 Months Ago</b> <i>01-08-2019</i>	92.71	7.29	1.51	0.00	0.00	0.00
<b>Start of Calendar Year</b> <i>01-01-2019</i>	92.99	7.01	1.32	0.00	0.00	0.00
<b>Start of Water Year</b> <i>09-25-2018</i>	57.46	42.54	20.19	7.03	0.96	0.00
<b>One Year Ago</b> <i>04-10-2018</i>	34.90	65.10	49.01	22.20	13.21	4.27

Intensity:

- D0 Abnormally Dry
- D1 Moderate Drought
- D2 Severe Drought
- D3 Extreme Drought
- D4 Exceptional Drought

*The Drought Monitor focuses on broad-scale conditions. Local conditions may vary. See accompanying text summary for forecast statements.*

Author:

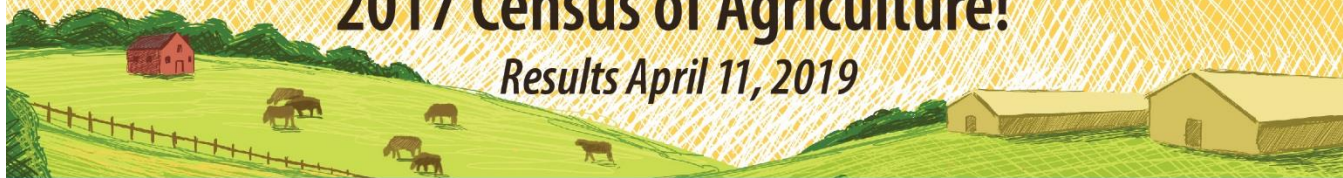
Deborah Bathke  
National Drought Mitigation Center



Source: National Drought Mitigation Center, a partnership with USDA, U.S. Department of Commerce/NOAA, <http://droughtmonitor.unl.edu>.

# Thank You for responding to the 2017 Census of Agriculture!

*Results April 11, 2019*



*For more information about the census and its special studies, visit [www.nass.usda.gov/AgCensus](http://www.nass.usda.gov/AgCensus)*