



Texas Crop Progress and Condition

Southern Plains Regional Field Office
Post Office Box 70 Austin, Texas 78767
(800) 626-3142 · FAX (855) 270-2725 · www.nass.usda.gov/tx

Issue: TX-CW1219

Weekly Summary for April 15 - 21

Released: April 22, 2019

Windy conditions remained in most of the state. The Low Plains, the Southern High Plains, the Trans-Pecos and the Lower Valley received little to no precipitation. Rainfall in the rest of the state ranged from 0.5 to 3 inches, with areas in the Cross Timbers getting upwards of 5 inches. There were 5.5 days suitable for fieldwork.

Small Grains: Recent rains improved wheat condition in the Northern High Plains. Wheat was heading in the Southern Low Plains. Wheat producers in the Edwards Plateau reported damage from the previous week's storms. Small grains in South Texas were maturing.

Row Crops: Corn planting was underway in the Northern High Plains. Corn was struggling in areas of the Cross Timber and the Blacklands due to recent cold temperatures and excessive soil moisture. Recent rains improved corn and sorghum conditions in South Central Texas, the Upper Coast and South Texas. Sorghum planting was ongoing in the Southern Low Plains. Rice planting continued in the Upper Coast but was delayed by rain in areas of South Central Texas. Cotton planting was ongoing in South Central Texas, the Coastal Bend, the Upper Coast and South Texas.

Fruit, Vegetable and Specialty Crops: Pecan producers were irrigating their trees and placing pecan nut casebearer traps in the Trans-Pecos, while nut development progressed in the Blacklands. Potatoes in South Texas were flowering. Vegetable crops in the Cross Timbers were in need of heat unit accumulation.

Livestock, Range and Pasture: Livestock condition remained mostly good to fair across the state. Strong winds damaged chicken houses and killed some livestock in South East Texas. Pasture and range condition continued benefitting from precipitation and warmer temperatures, and was rated mostly good to fair.

Crop Progress

Stage	Percent of Acreage			
	Current Week	Previous Week	Previous Year	5 Year Average
Corn				
Planted	59	57	64	59
Emerged	45	40	46	48
Cotton				
Planted	12	11	14	11
Rice				
Planted	64	55	73	71
Emerged	43	26	61	55
Sorghum				
Planted	57	55	76	59
Soybeans				
Planted	15	(NA)	24	20
Winter Wheat				
Headed	41	27	54	50
Oats				
Headed	60	45	73	60

(NA) Not available.

Crop Condition

Crop	Percent of Acreage					Index ¹	
	Excellent	Good	Fair	Poor	Very Poor	2019	2018
Wheat	12	40	37	9	2	74	35
Oats	3	44	40	6	7	69	56
Range and Pasture	8	41	40	9	2	--	--

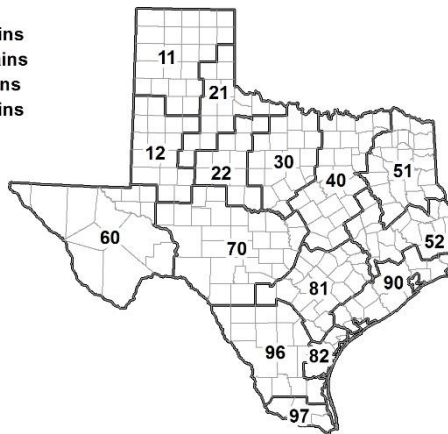
¹ The formula for the condition index is $I = (5V + 25P + 60F + 90G + 110E)/100$ where I = crop condition index and V, P, F, G, E = percentage of crop rated very poor, poor, fair, good, excellent.

Texas Soil Moisture and Days Suitable

Topsoil Moisture Condition				Subsoil Moisture Condition				Days Suitable for Fieldwork
Percentage of Acreage				Percentage of Acreage				
Very Short	Short	Adequate	Surplus	Very Short	Short	Adequate	Surplus	
2.0	29	60	9	2	24	62	12	5.5

Texas Agricultural Districts

- 11 Northern High Plains
- 12 Southern High Plains
- 21 Northern Low Plains
- 22 Southern Low Plains
- 30 Cross Timbers
- 40 Blacklands
- 51 North East
- 52 South East
- 60 Trans-Pecos
- 70 Edwards Plateau
- 81 South Central
- 82 Coastal Bend
- 90 Upper Coast
- 96 South
- 97 Lower Valley

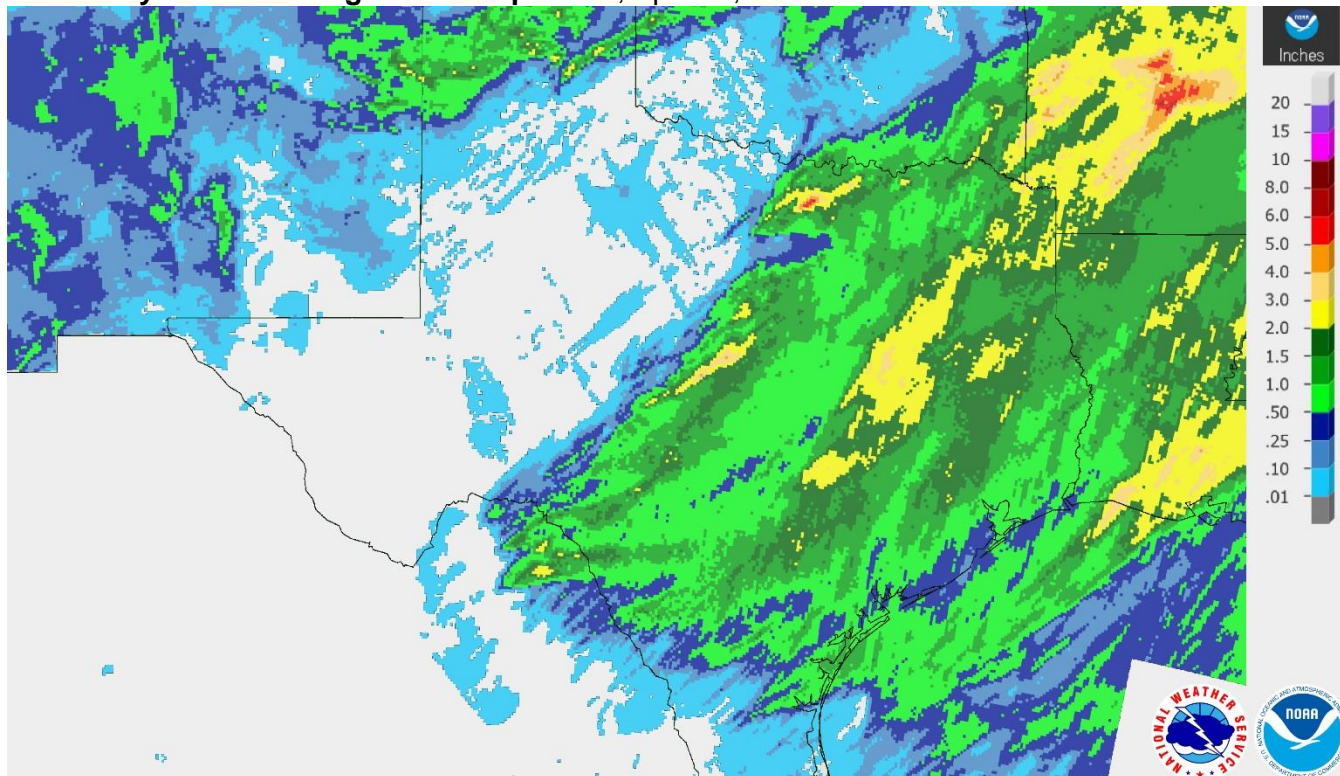


Thank You for responding to the 2017 Census of Agriculture!

Results April 11, 2019

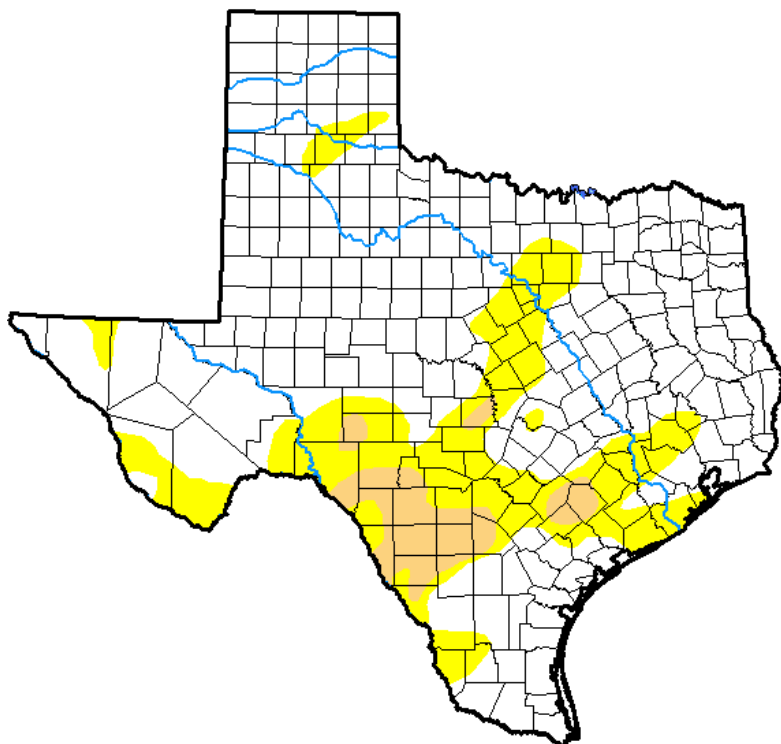
For more information about the census and its special studies, visit www.nass.usda.gov/AgCensus

Seven Day Observed Regional Precipitation, April 21, 2019.



Source: National Weather Service, www.nws.noaa.gov.

Drought Monitor, Valid April 16, 2019.



Drought Conditions (Percent Area)

	None	D0-D4	D1-D4	D2-D4	D3-D4	D4
Current	74.85	25.15	5.22	0.00	0.00	0.00
Last Week <i>04-09-2019</i>	61.20	38.80	7.83	0.00	0.00	0.00
3 Months Ago <i>01-15-2019</i>	91.82	8.18	1.60	0.00	0.00	0.00
Start of Calendar Year <i>01-01-2019</i>	92.99	7.01	1.32	0.00	0.00	0.00
Start of Water Year <i>09-25-2018</i>	57.46	42.54	20.19	7.03	0.96	0.00
One Year Ago <i>04-17-2018</i>	35.09	64.91	49.47	23.58	13.70	4.37

Intensity:

- D0 Abnormally Dry
- D1 Moderate Drought
- D2 Severe Drought
- D3 Extreme Drought
- D4 Exceptional Drought

The Drought Monitor focuses on broad-scale conditions. Local conditions may vary. See accompanying text summary for forecast statements.

Author:

David Miskus
NOAA/NWS/NCEP/CPC



Source: National Drought Mitigation Center, a partnership with USDA, U.S. Department of Commerce/NOAA, <http://droughtmonitor.unl.edu>.