



Texas Crop Progress and Condition

Southern Plains Regional Field Office
Post Office Box 70 Austin, Texas 78767
(800) 626-3142 · FAX (855) 270-2725 · www.nass.usda.gov/tx

Issue: TX-CW1619

Weekly Summary for May 13-May 19

Released: May 20, 2019

The weather during the past week was mostly dryer across the state than the week prior. Precipitation in the Southern Low Plains, the Cross Timbers, the Blacklands, East Texas, South Central Texas and the Edwards Plateau ranged from only trace amounts to 3 inches, with isolated areas in South East Texas getting upwards of 6 inches. Rainfall in the rest of the state ranged from trace amounts to 2 inches. There were 5.4 days suitable for fieldwork.

Small Grains: Wheat was progressing in the Plains and changing colors in the Cross Timbers. Wheat harvest was active in South Texas and areas of South Central Texas, but only a few producers had begun combining in the Blacklands. Wheat was drying down in the Edwards Plateau.

Row Crops: Producers in the High Plains, the Southern Low Plains, the Blacklands and the Edwards Plateau were planting cotton, where conditions allowed. Cotton was starting to square in the Coastal Bend and South Texas. Some corn fields were lost due to hail in the Edwards Plateau and were replanted with cotton. Producers resumed corn planting in the Northern High Plains. Corn and sorghum development was progressing in the Blacklands, the Coastal Bend and South Texas, but were growing slower than normal in the Edwards Plateau due to cooler and cloudy weather. Planting of peanuts was underway in South Texas.

Fruit, Vegetable and Specialty Crops: Pecan nut casebearer damage was reported in areas of South Central Texas where producers were unable to spray. Previous week's heavy rains and flooded fields resulted in loss of vegetables in areas of North East Texas. Potato, onion and cabbage harvests were in full swing in South Texas, while all other vegetables were reported in good condition.

Livestock, Range and Pasture: Sheep producers were weaning and selling lambs in the Northern Low Plains. Livestock condition remained mostly good to fair across the state, with little to no feed supplementation. Pasture and range condition continued to be rated mostly good to fair.

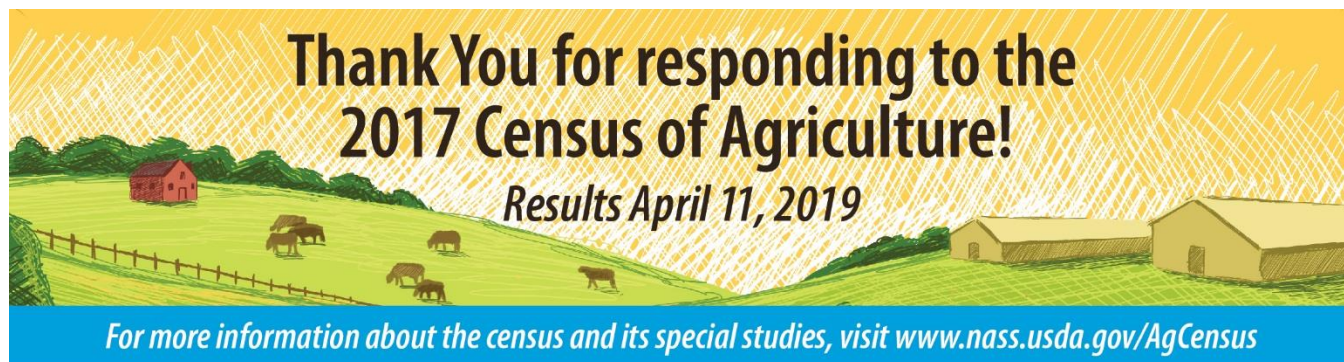
Crop Progress

Stage	Percent of Acreage			
	Current Week	Previous Week	Previous Year	5 Year Average
Corn				
Planted	92	75	87	84
Emerged	75	64	79	74
Silked	13	10	23	17
Cotton				
Planted	39	19	41	34
Squaring	6	3	7	5
Peanuts				
Planted	47	12	56	45
Rice				
Planted	83	83	98	91
Emerged	80	74	86	84
Sorghum				
Planted	79	75	89	79
Headed	22	12	19	19
Soybeans				
Planted	64	57	73	67
Emerged	49	31	61	54
Winter Wheat				
Headed	95	87	91	94
Harvested	8	3	11	8
Oats				
Harvested	14	1	27	19

Crop Condition

Crop	Percent of Acreage					Index ¹	
	Excellent	Good	Fair	Poor	Very Poor	2019	2018
Corn	22	53	22	1	2	85	76
Rice	9	44	43	3	1	76	76
Sorghum	23	45	30	0	2	84	56
Wheat	22	39	31	6	2	80	37
Oats	6	42	37	8	7	69	55
Range and Pasture	18	51	25	5	1	--	--

¹ The formula for the condition index is $I = (5V + 25P + 60F + 90G + 110E)/100$ where I = crop condition index and V, P, F, G, E = percentage of crop rated very poor, poor, fair, good, excellent.

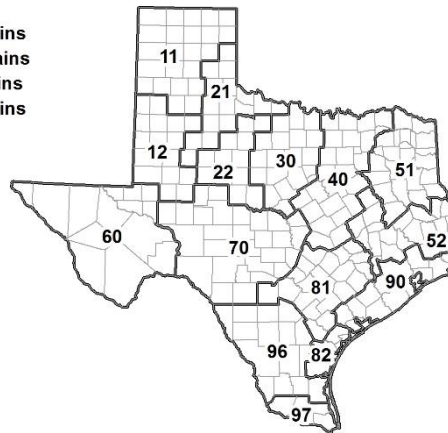


Soil Moisture and Days Suitable by District

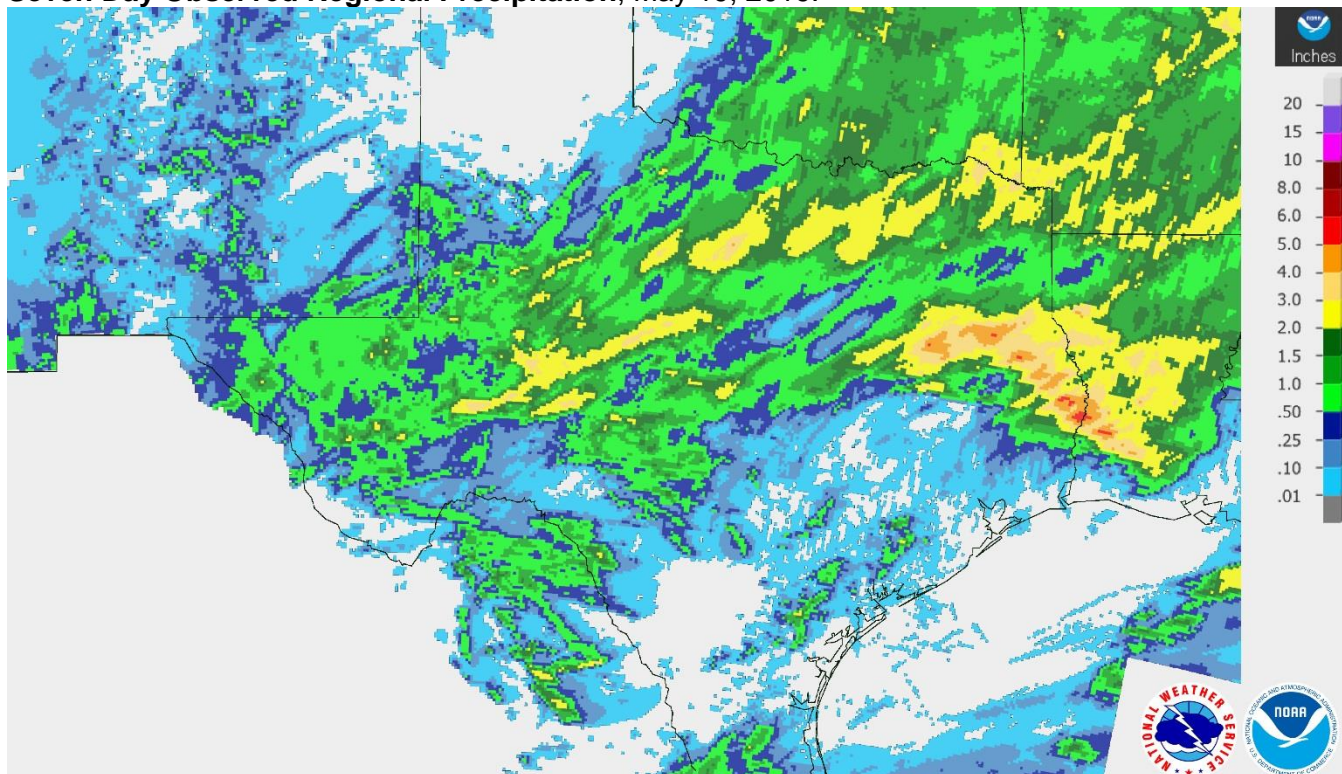
District	Topsoil Moisture Condition by District				Subsoil Moisture Condition by District				Days Suitable for Fieldwork
	Percentage of Acreage				Percentage of Acreage				
	Very Short	Short	Adequate	Surplus	Very Short	Short	Adequate	Surplus	
11	0	7	82	11	0	8	84	8	6.2
12	2	25	71	2	2	25	71	2	6.6
21	1	15	78	6	1	15	80	4	5.8
22	0	0	75	25	0	0	70	30	4.2
30	0	0	64	36	0	0	64	36	4.2
40	0	1	55	44	0	1	49	50	3.5
51	0	1	34	65	0	0	41	59	5.8
52	0	7	51	42	0	8	44	48	5.8
60	42	17	40	1	53	6	40	1	6.8
70	1	14	61	24	1	13	62	24	5.2
81	0	4	89	7	0	4	91	5	5.2
82	0	5	85	10	0	3	50	47	6.6
90	0	5	53	42	0	5	33	62	2.5
96	3	22	70	5	2	13	83	2	6.4
97	20	60	20	0	20	60	20	0	7.0
State	2	11	67	20	2	11	65	22	5.4

Texas Agricultural Districts

- 11 Northern High Plains
- 12 Southern High Plains
- 21 Northern Low Plains
- 22 Southern Low Plains
- 30 Cross Timbers
- 40 Blacklands
- 51 North East
- 52 South East
- 60 Trans-Pecos
- 70 Edwards Plateau
- 81 South Central
- 82 Coastal Bend
- 90 Upper Coast
- 96 South
- 97 Lower Valley

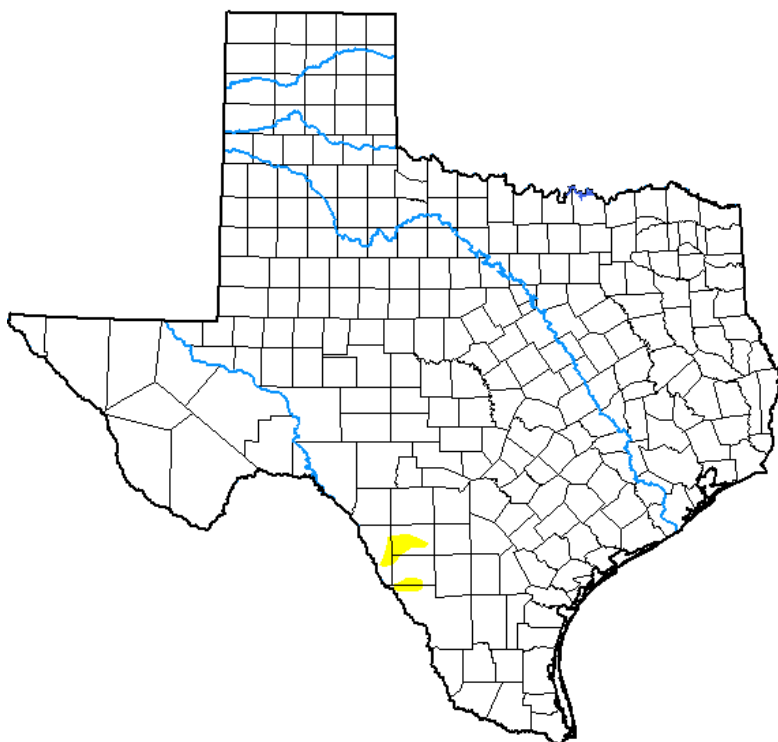


Seven Day Observed Regional Precipitation, May 19, 2019.



Source: National Weather Service, www.nws.noaa.gov.

Drought Monitor, Valid May 14, 2019.



Drought Conditions (Percent Area)

	None	D0-D4	D1-D4	D2-D4	D3-D4	D4
Current	99.57	0.43	0.00	0.00	0.00	0.00
Last Week <i>05-07-2019</i>	96.95	3.05	0.00	0.00	0.00	0.00
3 Months Ago <i>02-12-2019</i>	64.76	35.24	3.06	0.00	0.00	0.00
Start of Calendar Year <i>01-01-2019</i>	92.99	7.01	1.32	0.00	0.00	0.00
Start of Water Year <i>09-25-2018</i>	57.46	42.54	20.19	7.03	0.96	0.00
One Year Ago <i>05-15-2018</i>	36.32	63.68	43.39	25.33	12.98	4.02

Intensity:

- None
- D0 Abnormally Dry
- D1 Moderate Drought
- D2 Severe Drought
- D3 Extreme Drought
- D4 Exceptional Drought

The Drought Monitor focuses on broad-scale conditions. Local conditions may vary. See accompanying text summary for forecast statements.

Author:

Curtis Riganti
National Drought Mitigation Center



Source: National Drought Mitigation Center, a partnership with USDA, U.S. Department of Commerce/NOAA, <http://droughtmonitor.unl.edu>.

Texas Crop Progress and Condition (20 May 2019)

USDA, National Agricultural Statistics Service, Southern Plains Regional Field Office