



Texas Crop Progress and Condition

Southern Plains Regional Field Office
Post Office Box 70 Austin, Texas 78767
(800) 626-3142 · FAX (855) 270-2725 · www.nass.usda.gov/tx

Issue: TX-CW1719

Weekly Summary for May 20-May 26

Released: May 28, 2019

Conditions last week were mostly warm and windy across the state, with severe thunderstorms reported in several areas. Precipitation in the Plains, the Cross Timbers and the Edwards Plateau ranged from trace amounts to 4 inches, with isolated areas getting upwards of 6 inches. The rest of the state received little to no precipitation. There were 5.5 days suitable for fieldwork.

Small Grains: Producers in the Northern High Plains were assessing the damage on winter wheat from the previous week's storms. However, winter wheat was mostly in good condition in the Plains. Small grains harvest was in full swing in the Blacklands, South Central Texas, South Texas and the Edwards Plateau.

Row Crops: Cool temperatures slowed cotton germination in the Northern High Plains. Cotton planting in the Plains, the Edwards Plateau and the Blacklands was active where conditions allowed. Producers in some areas of the Southern High Plains were assessing the need to replant cotton due to high winds, hail and heavy precipitation from severe storms. Cotton was progressing in the Coastal Bend, the Upper Coast and South Texas. Corn in the Blacklands and the Upper Coast entered the tasseling stage. Rice planting was ongoing in South Central Texas, while peanut planting continued in South Texas and the Cross Timbers.

Fruit, Vegetable and Specialty Crops: The lack of warm temperatures delayed watermelon progress in the Southern Low Plains. Potato and onion harvests continued, while fruit development for watermelon and cantaloupes progressed in South Texas. Pecan producers sprayed zinc in the Southern High Plains.

Livestock, Range and Pasture: Livestock condition remained mostly good to fair across the state, with little to no feed supplementation. However, producers reported high insect activity in the Northern Low Plains, the Cross Timbers, the Blacklands and East Texas. Pasture and range condition continued to be rated mostly good to fair.

Crop Progress

Stage	Percent of Acreage			
	Current Week	Previous Week	Previous Year	5 Year Average
Corn				
Planted	93	92	90	89
Emerged	81	75	83	81
Silked	18	13	28	24
Cotton				
Planted	48	39	50	44
Squaring	7	6	11	7
Peanuts				
Planted	62	47	69	62
Rice				
Planted	85	83	100	94
Emerged	81	80	89	89
Sorghum				
Planted	80	79	92	81
Headed	28	22	29	26
Soybeans				
Planted	70	64	79	74
Emerged	55	49	66	61
Sunflowers				
Planted	27	NA	37	50
Winter Wheat				
Harvested	11	8	19	13
Oats				
Harvested	20	14	39	28

NA Not available.

Crop Condition

Crop	Percent of Acreage					Index ¹	
	Excellent	Good	Fair	Poor	Very Poor	2019	2018
Corn	17	58	21	2	2	84	73
Rice	10	49	40	1	0	79	87
Sorghum	23	54	22	0	1	87	47
Soybeans	21	48	15	8	8	78	63
Wheat	19	43	32	5	1	80	42
Oats	3	42	38	10	7	67	70
Range and Pasture	17	53	24	5	1	--	--

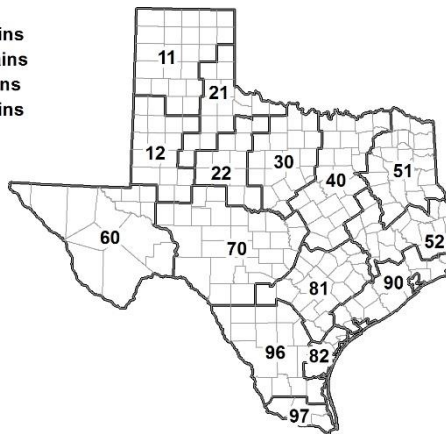
¹ The formula for the condition index is $I = (5V + 25P + 60F + 90G + 110E)/100$ where I = crop condition index and V, P, F, G, E = percentage of crop rated very poor, poor, fair, good, excellent.

Soil Moisture and Days Suitable by District

District	Topsoil Moisture Condition by District				Subsoil Moisture Condition by District				Days Suitable for Fieldwork
	Percentage of Acreage				Percentage of Acreage				
	Very Short	Short	Adequate	Surplus	Very Short	Short	Adequate	Surplus	
11	0	4	63	33	0	5	75	20	4.7
12	0	20	67	13	0	2	71	27	6.2
21	1	11	75	13	1	9	73	17	4.5
22	0	1	74	25	0	4	51	45	3.6
30	0	1	63	36	0	2	63	35	4.8
40	0	10	72	18	0	2	69	29	5.7
51	0	1	64	35	0	0	68	32	6.4
52	0	8	72	20	0	9	71	20	5.8
60	28	13	58	1	32	4	63	1	6.7
70	0	5	86	9	1	4	88	7	5.6
81	0	36	63	1	0	17	82	1	6.7
82	0	33	67	0	0	18	82	0	7.0
90	0	17	61	22	1	16	67	16	5.9
96	16	33	49	2	3	23	72	2	6.2
97	20	60	20	0	20	60	20	0	7.0
State	1	13	66	20	1	7	70	22	5.5

Texas Agricultural Districts

- 11 Northern High Plains
- 12 Southern High Plains
- 21 Northern Low Plains
- 22 Southern Low Plains
- 30 Cross Timbers
- 40 Blacklands
- 51 North East
- 52 South East
- 60 Trans-Pecos
- 70 Edwards Plateau
- 81 South Central
- 82 Coastal Bend
- 90 Upper Coast
- 96 South
- 97 Lower Valley

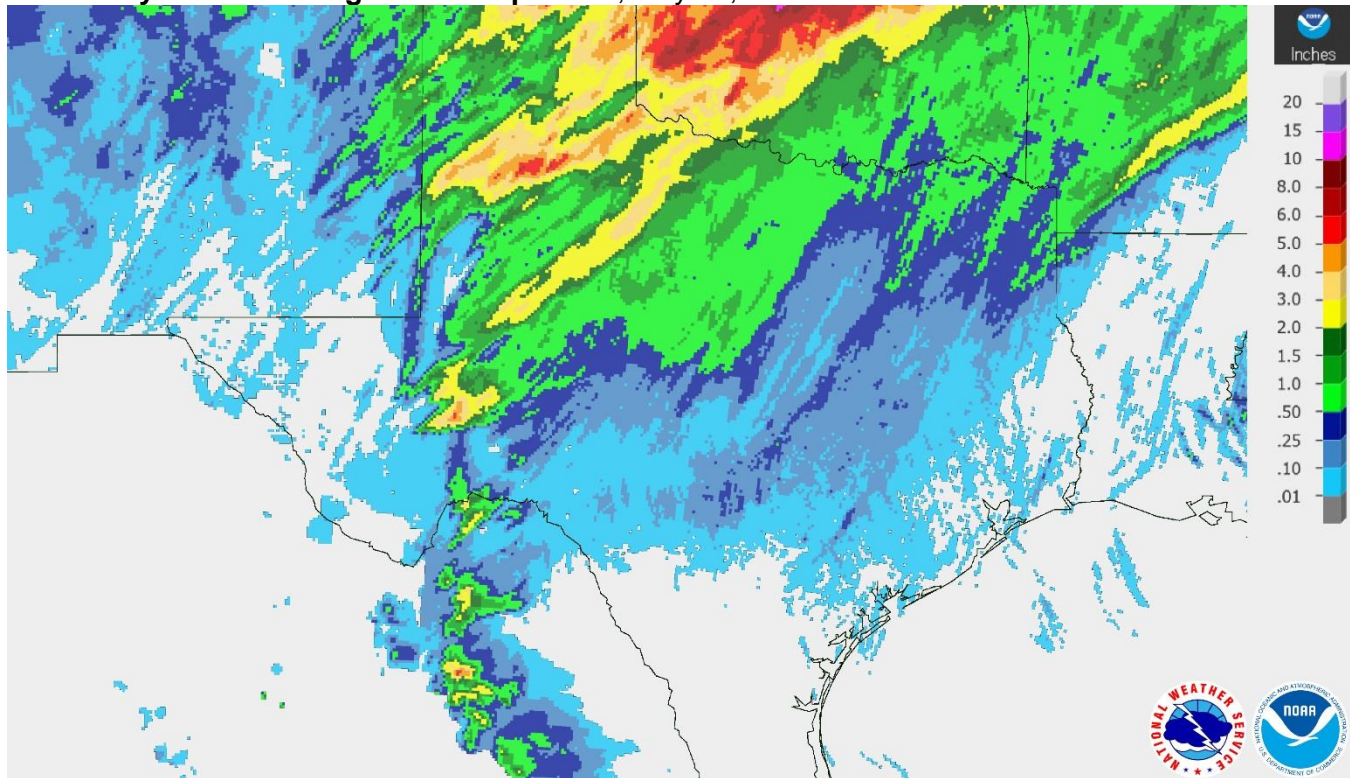


Thank You for responding to the 2017 Census of Agriculture!

Results April 11, 2019

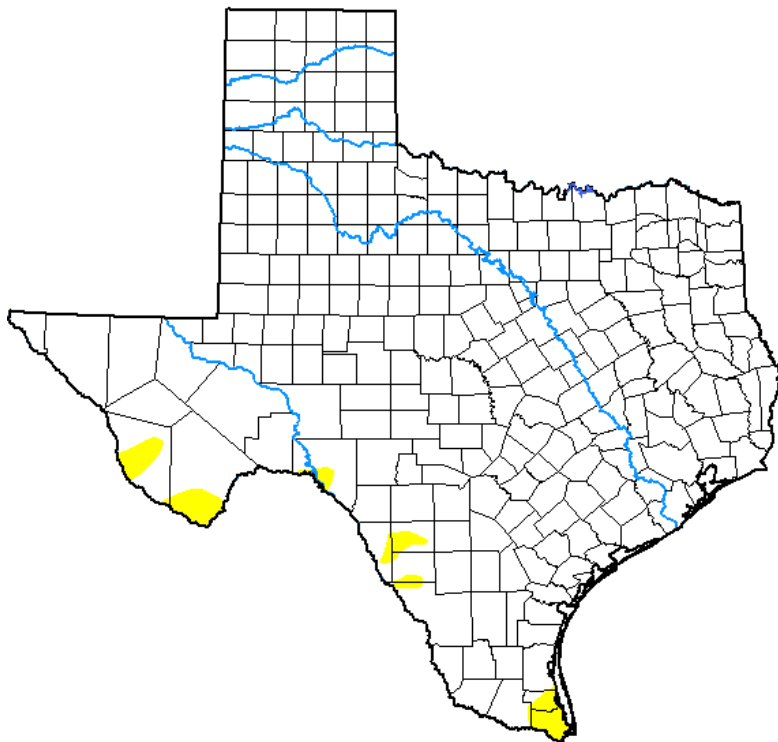
For more information about the census and its special studies, visit www.nass.usda.gov/AgCensus

Seven Day Observed Regional Precipitation, May 27, 2019.



Source: National Weather Service, www.nws.noaa.gov.

Drought Monitor, Valid May 21, 2019.



Drought Conditions (Percent Area)

	None	D0-D4	D1-D4	D2-D4	D3-D4	D4
Current	97.90	2.10	0.00	0.00	0.00	0.00
Last Week 05-14-2019	99.57	0.43	0.00	0.00	0.00	0.00
3 Months Ago 02-19-2019	59.54	40.46	6.63	0.00	0.00	0.00
Start of Calendar Year 01-01-2019	92.99	7.01	1.32	0.00	0.00	0.00
Start of Water Year 09-25-2018	57.46	42.54	20.19	7.03	0.96	0.00
One Year Ago 05-22-2018	37.32	62.68	40.53	22.46	9.20	2.54

Intensity:

- None
- D0 Abnormally Dry
- D1 Moderate Drought
- D2 Severe Drought
- D3 Extreme Drought
- D4 Exceptional Drought

The Drought Monitor focuses on broad-scale conditions. Local conditions may vary. See accompanying text summary for forecast statements.

Author:

Richard Heim
NCEI/NOAA



Source: National Drought Mitigation Center, a partnership with USDA, U.S. Department of Commerce/NOAA, <http://droughtmonitor.unl.edu>.

Texas Crop Progress and Condition (28 May 2019)

USDA, National Agricultural Statistics Service, Southern Plains Regional Field Office