



# Texas Crop Progress and Condition

Southern Plains Regional Field Office  
Post Office Box 70 Austin, Texas 78767  
(800) 626-3142 · FAX (855) 270-2725 · [www.nass.usda.gov/tx](http://www.nass.usda.gov/tx)

**Issue: TX-CW1919**

**Weekly Summary for June 3-June 9**

**Released: June 10, 2019**

Warm temperatures prevailed across most of the state during the past week, while isolated thunderstorms hit Central Texas, the Gulf Coast and the Edwards Plateau. Rainfall in those areas ranged from 1 to 5 inches, with isolated areas getting upwards of 15 inches. Areas of the Colorado River flooded and damaged crops in the Upper Coast. There were 4.2 days suitable for fieldwork.

**Small Grains:** Wheat was ripening in the Northern High Plains. Harvest of small grains in the Low Plains, the Cross Timbers, the Blacklands, and the Trans-Pecos was active where conditions allowed. Wheat harvest in South Texas was completed. Hail damage was reported in small grains in the Cross Timbers.

**Row Crops:** Cotton producers in some areas of the Northern High Plains were abandoning fields due to the RMA planting cutoff date and wet soil conditions, while other areas struggled with disease and poor germination, also caused by wet conditions. Cotton planting in the Plains, the Cross Timbers, East Texas, the Edwards Plateau, and the Edwards Plateau continued where conditions allowed. Producers in South Central Texas and the Coastal Bend reported problems with flea hoppers and cotton aphids. Corn and sorghum continued to progress across most of the state. However, sugarcane aphids were spotted in the Blacklands and the Coastal Bend. Peanut planting continued in South Texas.

**Fruit, Vegetable and Specialty Crops:** Producers in East Texas were harvesting blueberries, potatoes, tomatoes, sweet corn and other produce. Meanwhile, producers in South Texas were harvesting potatoes, sweet corn, and melons. Producers in the Trans-Pecos were having problems controlling the pecan nut casebearer populations.

**Livestock, Range and Pasture:** Livestock condition remained mostly good to fair across the state. Fly populations were a concern in East Texas, the Blacklands, and the Southern Low Plains. Pasture and range condition continued to be rated mostly good to fair.

### Crop Progress

Stage	Percent of Acreage			
	Current Week	Previous Week	Previous Year	5 Year Average
Corn				
Emerged	86	85	94	94
Silked	45	36	48	42
Cotton				
Planted	67	64	85	82
Squaring	13	11	14	11
Peanuts				
Planted	74	68	93	91
Rice				
Emerged	93	85	95	96
Headed	3	2	4	2
Sorghum				
Planted	90	85	99	90
Headed	44	35	49	40
Coloring	17	5	18	15
Soybeans				
Planted	85	75	89	88
Emerged	64	57	75	79
Blooming	9	6	13	11
Sunflowers				
Planted	63	56	68	78
Winter Wheat				
Harvested	27	22	55	42
Oats				
Headed	89	83	100	100
Harvested	72	50	71	57

### Crop Condition

Crop	Percent of Acreage					Index <sup>1</sup>	
	Excellent	Good	Fair	Poor	Very Poor	2019	2018
Corn	16	58	21	3	2	83	66
Cotton	9	25	47	8	11	63	56
Peanuts	1	97	1	1	0	89	60
Rice	5	30	61	3	1	70	75
Sorghum	22	50	28	0	0	86	52
Soybeans	12	31	45	6	6	70	69
Wheat	22	46	27	4	1	83	37
Oats	6	47	33	8	6	71	66
Range and Pasture	19	52	22	6	1	--	--

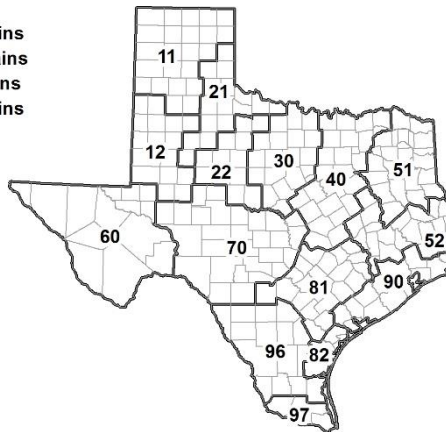
<sup>1</sup> The formula for the condition index is  $I = (5V + 25P + 60F + 90G + 110E)/100$  where I = crop condition index and V, P, F, G, E = percentage of crop rated very poor, poor, fair, good, excellent.

### Soil Moisture and Days Suitable by District

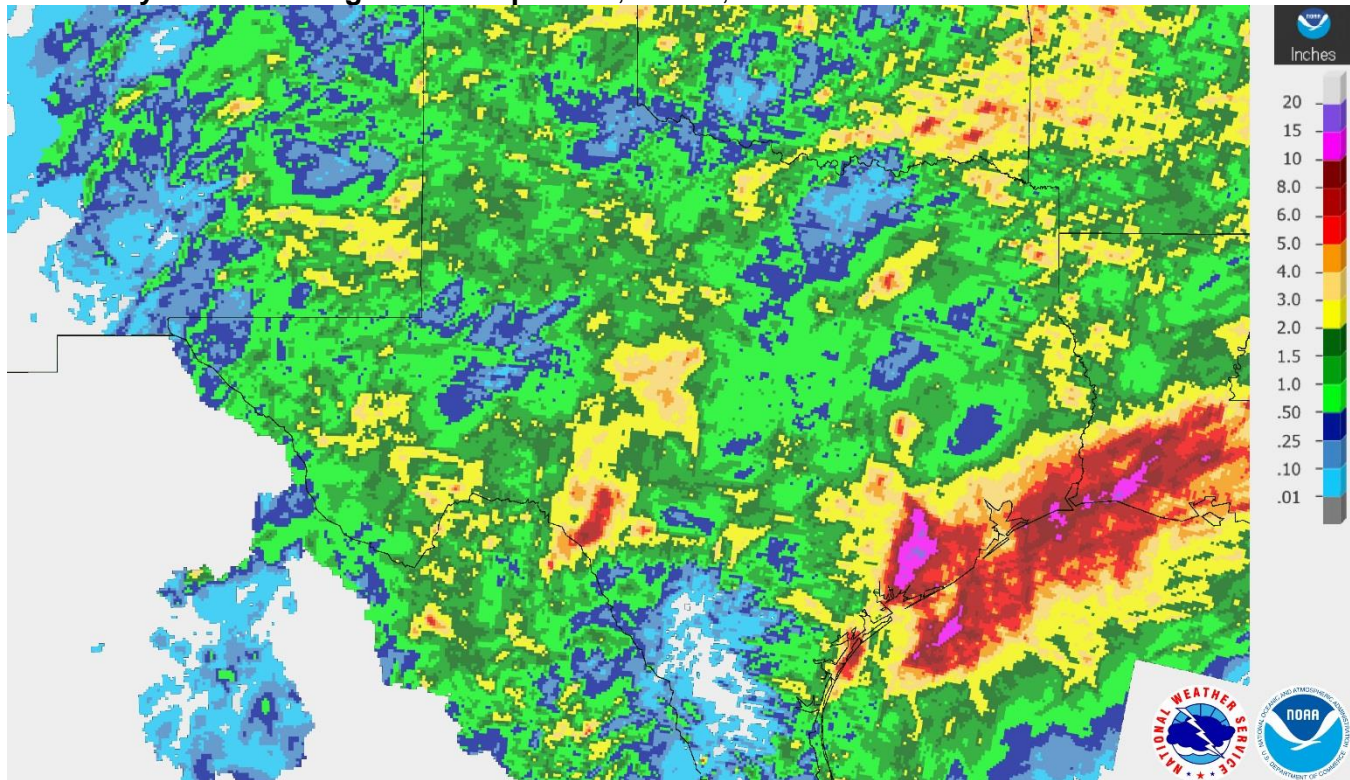
District	Topsoil Moisture Condition by District				Subsoil Moisture Condition by District				Days Suitable for Fieldwork
	Percentage of Acreage				Percentage of Acreage				
	Very Short	Short	Adequate	Surplus	Very Short	Short	Adequate	Surplus	
11	0	0	48	52	0	0	69	31	3.1
12	6	13	60	21	5	11	66	18	4.4
21	0	8	78	14	0	8	75	17	3.8
22	0	0	56	44	0	0	44	56	2.9
30	0	0	57	43	0	0	58	42	3.6
40	0	5	67	28	0	4	59	37	4.6
51	0	2	58	40	0	0	58	42	6.1
52	0	8	61	31	0	8	60	32	5.9
60	12	10	64	14	17	6	77	0	6.5
70	0	14	67	19	0	12	68	20	4.5
81	0	15	79	6	0	7	88	5	5.5
82	5	23	72	0	2	29	67	2	5.7
90	0	2	30	68	0	11	40	49	2.8
96	5	31	64	0	5	17	78	0	6.2
97	20	60	20	0	20	60	20	0	7.0
State	2	8	58	32	2	7	63	28	4.2

### Texas Agricultural Districts

- 11 Northern High Plains
- 12 Southern High Plains
- 21 Northern Low Plains
- 22 Southern Low Plains
- 30 Cross Timbers
- 40 Blacklands
- 51 North East
- 52 South East
- 60 Trans-Pecos
- 70 Edwards Plateau
- 81 South Central
- 82 Coastal Bend
- 90 Upper Coast
- 96 South
- 97 Lower Valley

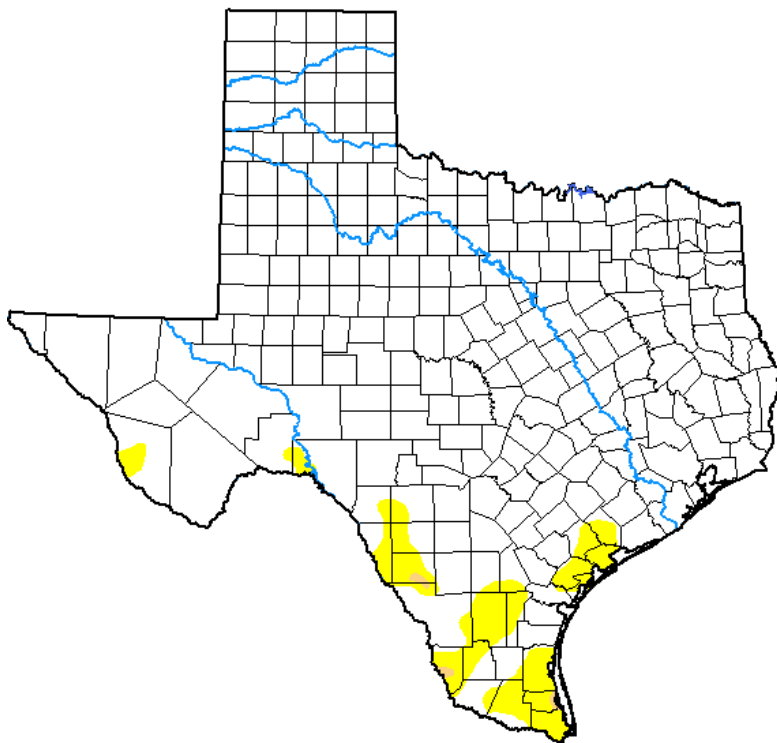


**Seven Day Observed Regional Precipitation, June 9, 2019.**



Source: National Weather Service, [www.nws.noaa.gov](http://www.nws.noaa.gov).

**Drought Monitor, Valid June 4, 2019.**



*Drought Conditions (Percent Area)*

	None	D0-D4	D1-D4	D2-D4	D3-D4	D4
<b>Current</b>	93.83	6.17	0.18	0.00	0.00	0.00
<b>Last Week</b> 05-28-2019	94.24	5.76	0.20	0.00	0.00	0.00
<b>3 Months Ago</b> 03-05-2019	45.94	54.06	19.92	0.00	0.00	0.00
<b>Start of Calendar Year</b> 01-01-2019	92.99	7.01	1.32	0.00	0.00	0.00
<b>Start of Water Year</b> 09-25-2018	57.46	42.54	20.19	7.03	0.96	0.00
<b>One Year Ago</b> 06-05-2018	21.20	78.80	44.37	23.44	7.29	1.59

Intensity:

- None
- D0 Abnormally Dry
- D1 Moderate Drought
- D2 Severe Drought
- D3 Extreme Drought
- D4 Exceptional Drought

*The Drought Monitor focuses on broad-scale conditions. Local conditions may vary. See accompanying text summary for forecast statements.*

Author:

David Simeral  
Western Regional Climate Center



Source: National Drought Mitigation Center, a partnership with USDA, U.S. Department of Commerce/NOAA, <http://droughtmonitor.unl.edu>.

**Texas Crop Progress and Condition (10 June 2019)**

USDA, National Agricultural Statistics Service, Southern Plains Regional Field Office