



Texas Crop Progress and Condition

Southern Plains Regional Field Office
Post Office Box 70 Austin, Texas 78767
(800) 626-3142 · FAX (855) 270-2725 · www.nass.usda.gov/tx

Issue: TX-CW2019

Weekly Summary for June 10-June 16

Released: June 17, 2019

Texas experienced warm temperatures and late-week thunderstorms in many areas last week. Precipitation in East Texas and the Gulf Coast ranged between 2 and 5 inches, with isolated areas reporting upwards of 6 inches. The rest of the state received from trace amounts to upwards of 2 inches of rain. There were 5.0 days suitable for fieldwork.

Small Grains: Wheat harvest was underway in the Northern Plains. Small grains harvest continued in the Plains, the Cross Timbers, the Blacklands and the Edwards Plateau. However, wet conditions continued to cause harvest delays in some areas.

Row Crops: Cotton replanting continued in the Plains where conditions allowed. However, producers in the Northern High Plains that were unable to plant were considering switching to alternate crops. Emerged cotton in areas of the Northern High Plains was behind schedule and suffering from fungal infections. Cotton was blooming in South Texas and the Upper Coast. Corn was damaged by severe weather in the Northern High Plains, North East Texas and South Central Texas. Producers were treating corn for rust in areas of the Upper Coast.

Fruit, Vegetable and Specialty Crops: Early peach harvest was underway in the Cross Timbers. Producers in East Texas were harvesting melons, beans, peaches and blueberries, while melon harvest continued in South Texas. Pecan orchards suffered wind damage in South Central Texas.

Livestock, Range and Pasture: Livestock condition remained mostly good to fair across the state. Fly populations increased in East Texas, while hog activity was on the rise as well. Pasture and range condition continued to be rated mostly good to fair.

Crop Progress

Stage	Percent of Acreage			
	Current Week	Previous Week	Previous Year	5 Year Average
Corn				
Emerged	90	86	96	96
Silked	50	45	52	47
Cotton				
Planted	86	67	94	91
Squaring	17	13	17	14
Peanuts				
Planted	78	74	96	96
Rice				
Emerged	97	93	95	98
Headed	4	3	13	8
Sorghum				
Planted	93	90	100	93
Headed	50	44	54	46
Coloring	26	17	28	24
Soybeans				
Planted	90	85	94	92
Emerged	73	64	84	86
Blooming	21	9	23	23
Sunflowers				
Planted	66	63	79	85
Winter Wheat				
Harvested	42	27	64	56
Oats				
Headed	90	89	100	100
Harvested	79	72	77	71

Crop Condition

Crop	Percent of Acreage					Index ¹	
	Excellent	Good	Fair	Poor	Very Poor	2019	2018
Corn	9	58	27	4	2	79	62
Cotton	7	34	39	14	6	66	51
Peanuts	1	95	4	0	0	89	66
Rice	7	33	57	2	1	72	79
Sorghum	27	55	16	2	0	89	55
Soybeans	8	40	41	6	5	71	66
Wheat	18	45	31	5	1	80	43
Oats	6	47	33	8	6	71	72
Range and Pasture	18	52	23	6	1	--	--

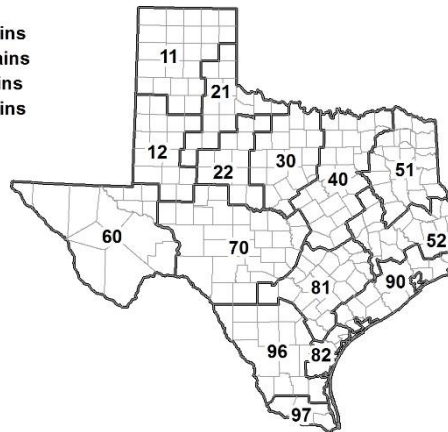
¹ The formula for the condition index is $I = (5V + 25P + 60F + 90G + 110E)/100$ where I = crop condition index and V, P, F, G, E = percentage of crop rated very poor, poor, fair, good, excellent.

Soil Moisture and Days Suitable by District

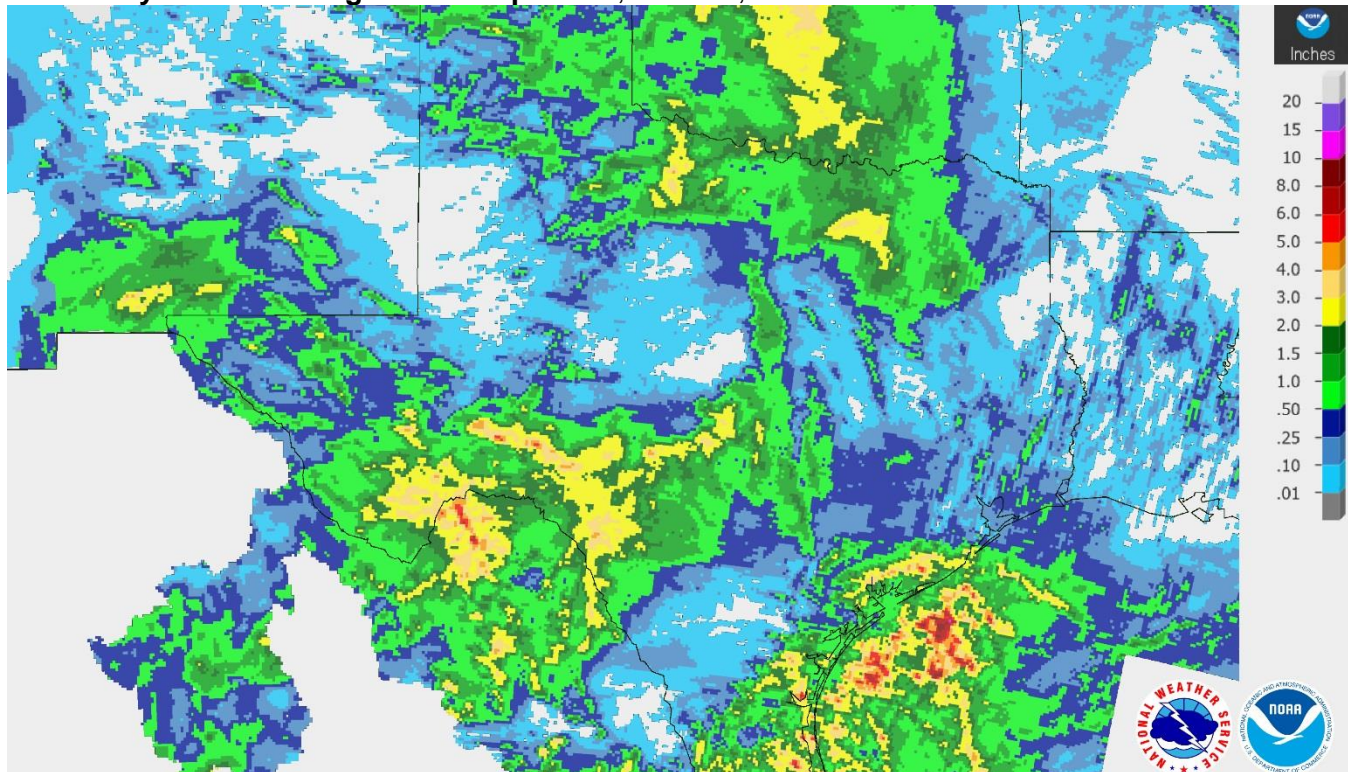
District	Topsoil Moisture Condition by District				Subsoil Moisture Condition by District				Days Suitable for Fieldwork
	Percentage of Acreage				Percentage of Acreage				
	Very Short	Short	Adequate	Surplus	Very Short	Short	Adequate	Surplus	
11	0	0	48	52	0	2	93	5	3.1
12	6	17	69	8	5	20	72	3	5.9
21	0	7	87	6	0	5	91	4	5.5
22	0	0	85	15	0	0	77	23	5.3
30	0	2	75	23	0	1	71	28	5.4
40	1	7	60	32	0	4	54	42	5.3
51	0	2	72	26	0	0	68	32	6.5
52	0	10	51	39	0	9	55	36	6.0
60	12	10	55	23	16	5	56	23	6.5
70	0	20	68	12	0	5	92	3	4.5
81	0	21	69	10	0	8	81	11	6.0
82	0	15	80	5	0	24	72	4	6.1
90	0	2	40	58	0	6	44	50	2.8
96	10	46	44	0	6	47	47	0	6.3
97	20	60	20	0	20	16	20	44	7.0
State	2	10	63	25	2	8	73	17	5.0

Texas Agricultural Districts

- 11 Northern High Plains
- 12 Southern High Plains
- 21 Northern Low Plains
- 22 Southern Low Plains
- 30 Cross Timbers
- 40 Blacklands
- 51 North East
- 52 South East
- 60 Trans-Pecos
- 70 Edwards Plateau
- 81 South Central
- 82 Coastal Bend
- 90 Upper Coast
- 96 South
- 97 Lower Valley

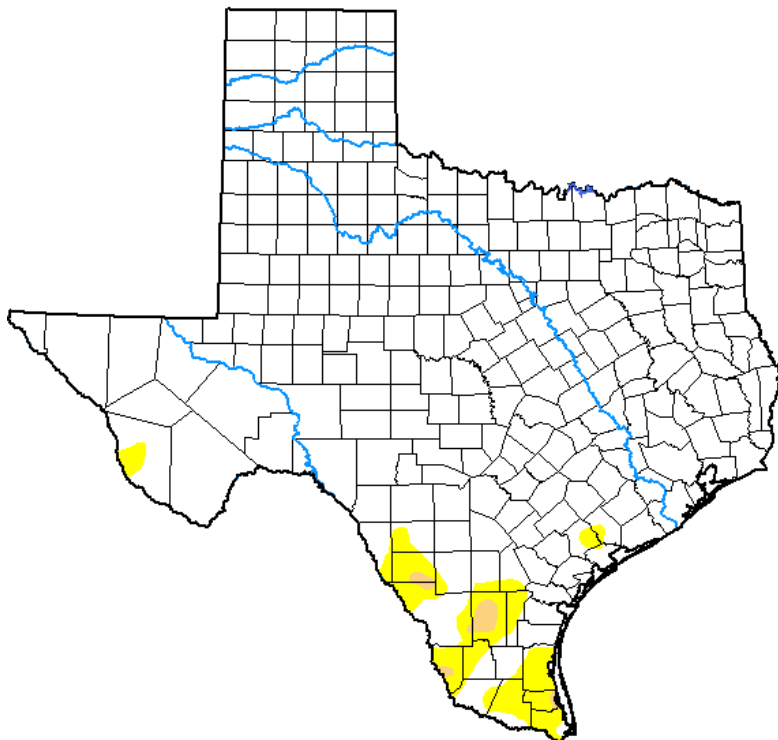


Seven Day Observed Regional Precipitation, June 16, 2019.



Source: National Weather Service, www.nws.noaa.gov.

Drought Monitor, Valid June 11, 2019.



Drought Conditions (Percent Area)

	None	D0-D4	D1-D4	D2-D4	D3-D4	D4
Current	94.90	5.10	0.52	0.00	0.00	0.00
Last Week 06-04-2019	93.83	6.17	0.18	0.00	0.00	0.00
3 Months Ago 03-12-2019	52.86	47.14	14.69	0.00	0.00	0.00
Start of Calendar Year 01-01-2019	92.99	7.01	1.32	0.00	0.00	0.00
Start of Water Year 09-25-2018	57.46	42.54	20.19	7.03	0.96	0.00
One Year Ago 06-12-2018	24.52	75.48	49.81	25.03	9.74	2.43

Intensity:

- None
- D0 Abnormally Dry
- D1 Moderate Drought
- D2 Severe Drought
- D3 Extreme Drought
- D4 Exceptional Drought

The Drought Monitor focuses on broad-scale conditions. Local conditions may vary. See accompanying text summary for forecast statements.

Author:

David Simeral
Western Regional Climate Center



Source: National Drought Mitigation Center, a partnership with USDA, U.S. Department of Commerce/NOAA, <http://droughtmonitor.unl.edu>.

Texas Crop Progress and Condition (17 June 2019)

USDA, National Agricultural Statistics Service, Southern Plains Regional Field Office