



# Texas Crop Progress and Condition

Southern Plains Regional Field Office  
Post Office Box 70 Austin, Texas 78767  
(800) 626-3142 · FAX (855) 270-2725 · [www.nass.usda.gov/tx](http://www.nass.usda.gov/tx)

**Issue: TX-CW2119**

**Weekly Summary for June 17-June 23**

**Released: June 24, 2019**

Scattered showers were experienced throughout the state last week. Precipitation in East Texas ranged between 3 and 5 inches, with isolated areas reporting upwards of 6 inches. Throughout most of the state rainfall ranged from trace amounts up to 1.5 inches. Hail storms were reported in some areas of the High Plains, Southern Low Plains, and the Blacklands.

**Small Grains:** Small grains harvest continued in the Plains, the Cross Timbers, and the Blacklands. Wheat harvest neared completion in areas of the Edwards Plateau.

**Row Crops:** Cotton progress was delayed across the Plains due to adverse weather conditions. Prevented planting and poor stands due to cool temperatures and severe storms have caused some Plains cotton producers to switch to alternative crops. In areas of the Blacklands, Upper Coast, Trans-Pecos, and South Texas cotton continued to progress. Corn neared maturity in South and South Central Texas while continuing to progress across the rest of the state.

**Fruit, Vegetable and Specialty Crops:** Watermelons and cantaloupes made progress in areas of South Texas. Pecan producers were optimistic as to the outlook for their crop but were monitoring insect populations closely in areas of the Cross Timbers, Trans-Pecos, Edwards Plateau, and South Texas.

**Livestock, Range and Pasture:** Livestock condition remained mostly good to fair across the state. Supplemental feeding was occurring in areas of South Texas and the Lower Valley with some producers supplying supplemental water as well. Pasture and range condition continued to be rated mostly good to fair.

### Crop Condition

Crop	Percent of Acreage					Index <sup>1</sup>	
	Excellent	Good	Fair	Poor	Very Poor	2019	2018
Corn	14	57	25	3	1	82	62
Cotton	3	38	34	19	6	63	56
Peanuts	1	93	6	0	0	88	65
Rice	5	46	49	0	0	76	78
Sorghum	26	51	20	3	0	87	58
Soybeans	13	42	34	6	5	74	69
Wheat	18	41	38	2	1	80	43
Oats	5	46	32	10	7	69	72
Range and Pasture	21	52	21	5	1	84	50

<sup>1</sup> The formula for the condition index is  $I = (5V + 25P + 60F + 90G + 110E)/100$  where I = crop condition index and V, P, F, G, E = percentage of crop rated very poor, poor, fair, good, excellent.

### Crop Progress

Stage	Percent of Acreage			
	Current Week	Previous Week	Previous Year	5 Year Average
Corn				
Emerged	94	90	99	98
Silked	52	50	56	51
Dough	14	(NA)	32	28
Cotton				
Planted	95	86	95	95
Squaring	27	17	22	19
Setting Bolls	4	(NA)	10	7
Peanuts				
Planted	87	78	96	96
Rice				
Headed	7	4	26	19
Sorghum				
Planted	96	93	100	96
Headed	53	50	57	52
Coloring	32	26	38	32
Soybeans				
Planted	93	90	95	94
Emerged	74	73	95	90
Blooming	30	21	34	33
Sunflowers				
Planted	67	66	84	89
Winter Wheat				
Harvested	58	42	70	72
Oats				
Headed	95	90	100	100
Harvested	85	79	86	84

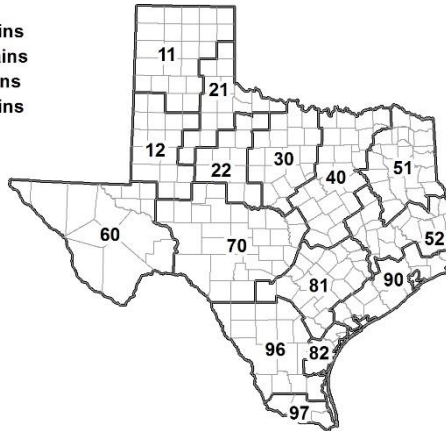
(NA) Not available.

### Soil Moisture and Days Suitable by District

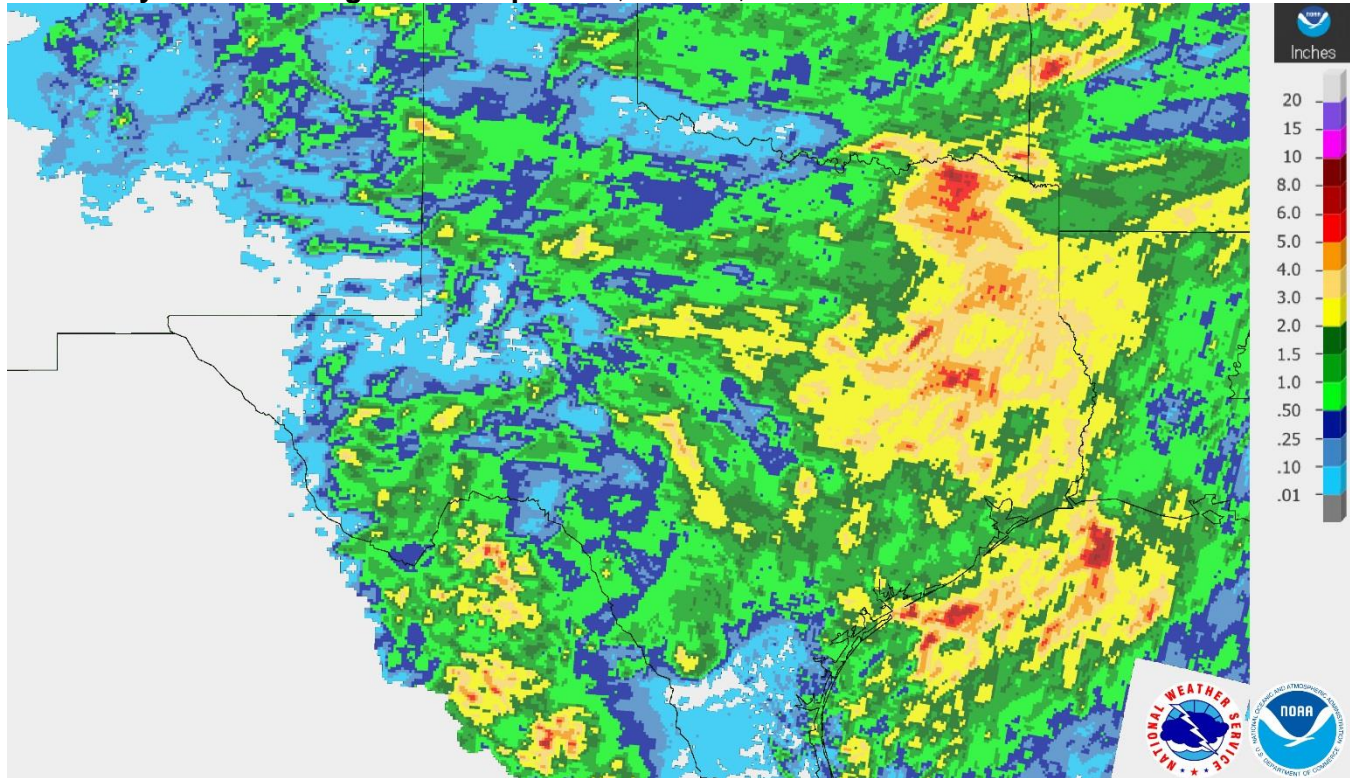
District	Topsoil Moisture Condition by District				Subsoil Moisture Condition by District				Days Suitable for Fieldwork
	Percentage of Acreage				Percentage of Acreage				
	Very Short	Short	Adequate	Surplus	Very Short	Short	Adequate	Surplus	
11	0	0	48	52	0	2	93	5	5.0
12	6	21	68	5	4	19	72	5	6.1
21	0	4	89	7	0	7	87	6	5.7
22	0	3	76	21	0	0	73	27	5.4
30	0	3	70	27	0	1	67	32	4.8
40	0	4	70	26	0	2	64	34	3.9
51	0	2	62	36	0	0	61	39	5.9
52	0	8	51	41	0	8	57	35	4.8
60	12	10	55	23	17	6	54	23	6.8
70	1	27	62	10	1	16	73	10	6.6
81	0	27	66	7	0	11	83	6	6.1
82	0	28	67	5	0	27	70	3	7.0
90	1	6	63	30	0	16	58	26	5.5
96	25	21	54	0	8	41	51	0	6.7
97	20	60	20	0	20	60	20	0	2.0
State	3	11	63	23	2	10	73	15	5.3

### Texas Agricultural Districts

- 11 Northern High Plains
- 12 Southern High Plains
- 21 Northern Low Plains
- 22 Southern Low Plains
- 30 Cross Timbers
- 40 Blacklands
- 51 North East
- 52 South East
- 60 Trans-Pecos
- 70 Edwards Plateau
- 81 South Central
- 82 Coastal Bend
- 90 Upper Coast
- 96 South
- 97 Lower Valley

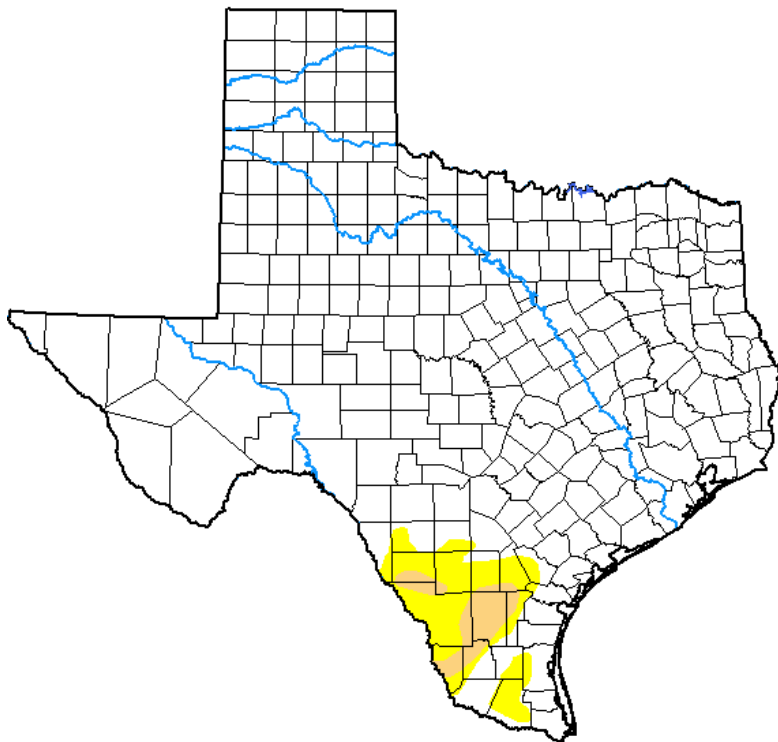


**Seven Day Observed Regional Precipitation, June 23, 2019.**



Source: National Weather Service, [www.nws.noaa.gov](http://www.nws.noaa.gov).

**Drought Monitor, Valid June 18, 2019.**



*Drought Conditions (Percent Area)*

	None	D0-D4	D1-D4	D2-D4	D3-D4	D4
<b>Current</b>	94.17	5.83	1.59	0.00	0.00	0.00
<b>Last Week</b> <i>06-11-2019</i>	94.90	5.10	0.52	0.00	0.00	0.00
<b>3 Months Ago</b> <i>03-19-2019</i>	69.05	30.95	9.67	0.90	0.00	0.00
<b>Start of Calendar Year</b> <i>01-01-2019</i>	92.99	7.01	1.32	0.00	0.00	0.00
<b>Start of Water Year</b> <i>09-25-2018</i>	57.46	42.54	20.19	7.03	0.96	0.00
<b>One Year Ago</b> <i>06-19-2018</i>	25.97	74.03	47.12	18.88	3.78	0.64

Intensity:

- None
- D0 Abnormally Dry
- D1 Moderate Drought
- D2 Severe Drought
- D3 Extreme Drought
- D4 Exceptional Drought

*The Drought Monitor focuses on broad-scale conditions. Local conditions may vary. See accompanying text summary for forecast statements.*

Author:

Brad Pugh  
CPC/NOAA



Source: National Drought Mitigation Center, a partnership with USDA, U.S. Department of Commerce/NOAA, <http://droughtmonitor.unl.edu>.

**Texas Crop Progress and Condition (June 2019)**

USDA, National Agricultural Statistics Service, Southern Plains Regional Field Office