



Texas Crop Progress and Condition

Southern Plains Regional Field Office
Post Office Box 70 Austin, Texas 78767
(800) 626-3142 · FAX (855) 270-2725 · www.nass.usda.gov/tx

Issue: TX-CW2219

Weekly Summary for June 24-June 30

Released: July 1, 2019

Texas experienced warm temperatures and scattered thunderstorms throughout most of the state last week. Precipitation in East Texas and the Gulf Coast ranged between 2 and 6 inches, with isolated areas reporting upwards of 8 inches. The rest of the state received trace amounts of rainfall with a few Districts reaching upwards of 1.5 inches. Meanwhile, areas in Edward Plateau experienced a tornado and hail storms.

Small Grains: Wheat harvest is wrapping up in North Central regions. Small grains harvest was nearly complete in the Northern and Southern Low Plains, while weather conditions allowed harvest to advance rapidly in the High Plains.

Row Crops: Cotton progressed well due to warm temperatures. However, some areas in the Northern and Southern High Plains are still struggling with poor stands due to weather conditions. Most of Southern and Central Districts are progressing nicely. Cotton is blooming and setting bolls in South Texas and the Upper Coast. Meanwhile, corn and sorghum continued to make good progress throughout the state, with producers gearing up for harvest in the Coastal Bend.

Fruit, Vegetable and Specialty Crops: Watermelons and cantaloupes continued to progress in areas of South Texas. Fruit and vegetable harvest continued in areas of Cross Timbers, South Texas and South East Texas, with some areas in South East Texas experiencing a set back with peas caused by pods not developing.

Livestock, Range and Pasture: Livestock condition remained mostly good to fair across the state. Areas in the Northern Low Plains are experiencing a problem with grasshoppers and heat stress due to intense heat and lack of moisture. Pasture and range condition continued to be rated mostly good to fair across the state.

Crop Progress

Stage	Percent of Acreage			
	Current Week	Previous Week	Previous Year	5 Year Average
Corn				
Emerged	99	94	100	100
Silked	71	52	59	57
Dough	40	14	47	41
Cotton				
Squaring	29	27	30	27
Setting Bolls	7	4	13	10
Peanuts				
Planted	95	87	96	97
Rice				
Headed	27	7	48	37
Sorghum				
Headed	60	53	60	58
Coloring	37	32	48	40
Soybeans				
Planted	97	93	95	97
Emerged	90	74	97	93
Blooming	42	30	45	42
Sunflowers				
Planted	75	67	89	92
Winter Wheat				
Harvested	81	58	79	82
Oats				
Harvested	90	85	92	92

Crop Condition

Crop	Percent of Acreage					Index ¹	
	Excellent	Good	Fair	Poor	Very Poor	2019	2018
Corn	13	56	28	2	1	82	57
Cotton	6	38	31	18	7	64	54
Peanuts	11	83	6	0	0	90	67
Rice	6	44	47	2	1	75	79
Sorghum	22	55	23	0	0	88	53
Soybeans	10	39	43	4	4	73	64
Wheat	18	41	38	2	1	80	43
Oats	5	46	32	10	7	69	72
Range and Pasture	19	53	22	5	1	83	52

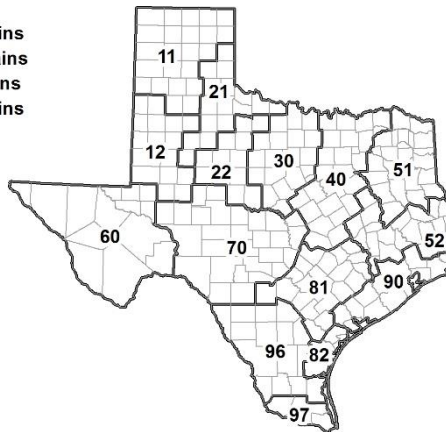
¹ The formula for the condition index is $I = (5V + 25P + 60F + 90G + 110E)/100$ where I = crop condition index and V, P, F, G, E = percentage of crop rated very poor, poor, fair, good, excellent.

Soil Moisture and Days Suitable by District

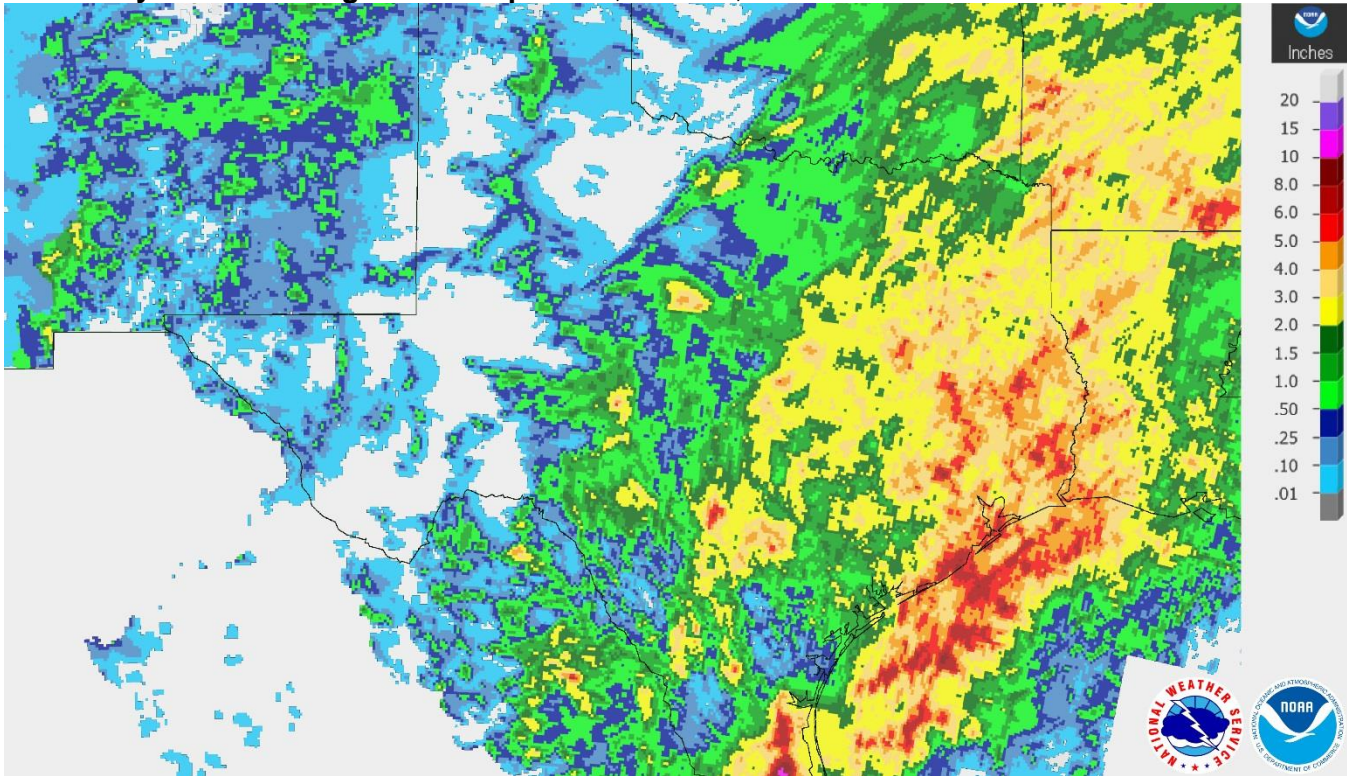
District	Topsoil Moisture Condition by District				Subsoil Moisture Condition by District				Days Suitable for Fieldwork
	Percentage of Acreage				Percentage of Acreage				
	Very Short	Short	Adequate	Surplus	Very Short	Short	Adequate	Surplus	
11	1	38	61	0	1	14	85	0	6.9
12	0	37	59	4	0	18	73	9	7.0
21	0	20	80	0	0	15	84	1	6.8
22	0	5	82	13	0	3	67	30	6.4
30	0	7	86	7	0	2	80	18	5.5
40	0	2	82	16	0	1	83	16	4.5
51	0	2	61	37	0	0	63	37	6.2
52	0	4	67	29	0	4	74	22	4.9
60	12	10	67	11	17	6	66	11	6.8
70	1	27	70	2	1	16	75	8	6.7
81	0	11	82	7	0	6	87	7	5.1
82	3	36	61	0	3	29	68	0	6.6
90	0	3	44	53	0	11	25	64	2.7
96	6	36	58	0	6	41	53	0	6.6
97	20	60	20	0	20	60	20	0	7.0
State	1	22	67	10	1	13	73	13	6.1

Texas Agricultural Districts

- 11 Northern High Plains
- 12 Southern High Plains
- 21 Northern Low Plains
- 22 Southern Low Plains
- 30 Cross Timbers
- 40 Blacklands
- 51 North East
- 52 South East
- 60 Trans-Pecos
- 70 Edwards Plateau
- 81 South Central
- 82 Coastal Bend
- 90 Upper Coast
- 96 South
- 97 Lower Valley

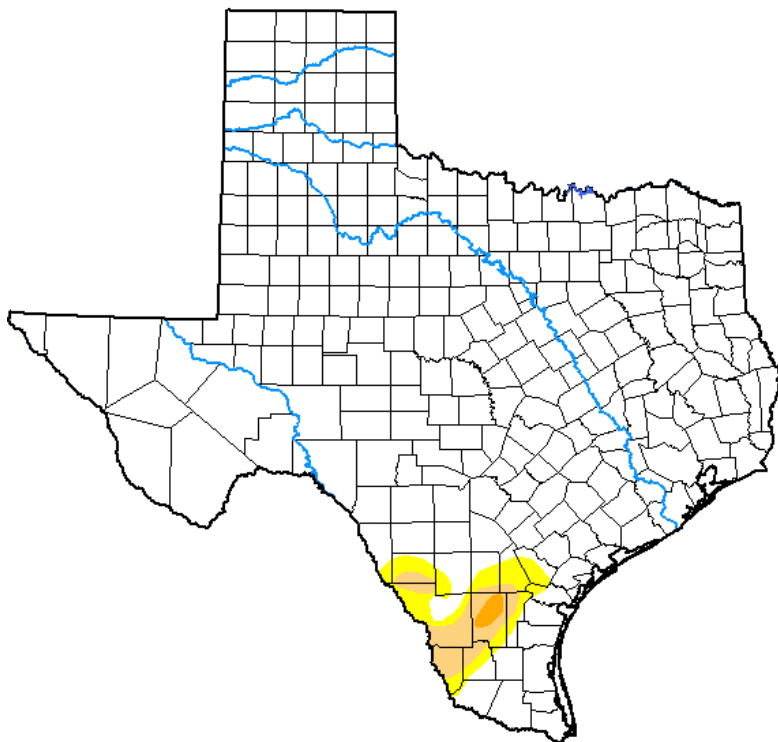


Seven Day Observed Regional Precipitation, June 30, 2019.



Source: National Weather Service, www.nws.noaa.gov.

Drought Monitor, Valid June 25, 2019.



Drought Conditions (Percent Area)

	None	D0-D4	D1-D4	D2-D4	D3-D4	D4
Current	95.84	4.16	1.93	0.23	0.00	0.00
Last Week <i>06-18-2019</i>	94.17	5.83	1.59	0.00	0.00	0.00
3 Months Ago <i>03-26-2019</i>	61.92	38.08	11.44	2.38	0.00	0.00
Start of Calendar Year <i>01-01-2019</i>	92.99	7.01	1.32	0.00	0.00	0.00
Start of Water Year <i>09-25-2018</i>	57.46	42.54	20.19	7.03	0.96	0.00
One Year Ago <i>06-26-2018</i>	27.33	72.67	47.80	17.91	5.07	0.00

Intensity:

- None
- D0 Abnormally Dry
- D1 Moderate Drought
- D2 Severe Drought
- D3 Extreme Drought
- D4 Exceptional Drought

The Drought Monitor focuses on broad-scale conditions. Local conditions may vary. See accompanying text summary for forecast statements.

Author:

Brad Pugh
CPC/NOAA



Source: National Drought Mitigation Center, a partnership with USDA, U.S. Department of Commerce/NOAA, <http://droughtmonitor.unl.edu>.

Texas Crop Progress and Condition (1 July 2019)

USDA, National Agricultural Statistics Service, Southern Plains Regional Field Office