



# Texas Crop Progress and Condition

Southern Plains Regional Field Office  
Post Office Box 70 Austin, Texas 78767  
(800) 626-3142 · FAX (855) 270-2725 · [www.nass.usda.gov/tx](http://www.nass.usda.gov/tx)

Issue: TX-CW2519

Weekly Summary for July 15-July 21

Released: July 22, 2019

Weather was mostly hot, dry and windy across the state. Most of the state received little to no precipitation. However, precipitation in areas in the Trans-Pecos, the Northern High Plains and the Upper Coast ranged from traces amounts to 2 inches. There were 6.8 days suitable for fieldwork.

**Small Grains:** There was still some wheat being harvested in the Northern High Plains, while small grain harvest was completed in the rest of the state.

**Row Crops:** Dryland cotton in the Northern Plains was showing signs of heat stress, while the rest of the cotton in the Plains continued to progress. Producers were irrigating cotton in South Texas. Sorghum was maturing in the Low Plains and the Edwards Plateau. Corn and sorghum harvest continued in the Coastal Bend, the Upper Coast and South Texas. Peanuts were pegging in South Texas.

**Fruit, Vegetable and Specialty Crops:** Watermelon harvest continued in the Southern High Plains and North East Texas. High temperatures were having a negative effect on vegetable quality in South East Texas. Peach harvest was winding down in the Cross Timbers.

**Livestock, Range and Pasture:** Livestock condition remained mostly good to fair across the state. Fly numbers were on the rise in cattle of the Blacklands and the Edwards Plateau. Sheep producers in the Northern Low Plains were able to get under control a small coccidiosis outbreak in the Northern Low Plains. Pasture and range condition continued to be rated mostly good to fair across the state. Chances of fires have increased in many areas of the state due to hot, dry and windy conditions.

2017 CENSUS OF AGRICULTURE

**RESULTS NOW AVAILABLE**

[www.nass.usda.gov/AgCensus](http://www.nass.usda.gov/AgCensus)

USDA United States Department of Agriculture  
National Agricultural Statistics Service

-over-

### Crop Progress

Stage	Percent of Acreage			
	Current Week	Previous Week	Previous Year	5 Year Average
Corn				
Silked	81	75	84	82
Dough	58	50	64	59
Dented	45	(NA)	55	51
Cotton				
Squaring	74	52	70	74
Setting Bolls	24	12	28	26
Bolls Opening	5	(NA)	10	6
Peanuts				
Pegging	26	10	54	46
Rice				
Headed	78	64	86	79
Sorghum				
Headed	73	67	74	78
Coloring	53	49	65	59
Mature	27	(NA)	56	47
Harvested	18	(NA)	43	29
Soybeans				
Blooming	65	62	70	64
Setting Pods	35	17	37	33
Sunflowers				
Harvested	20	4	44	(NA)

(NA) Not available.

### Crop Condition

Crop	Percent of Acreage					Index <sup>1</sup>	
	Excellent	Good	Fair	Poor	Very Poor	2019	2018
Corn	18	50	29	3	0	83	56
Cotton	10	48	30	9	3	75	45
Peanuts	9	90	1	0	0	92	76
Rice	3	39	56	2	0	72	71
Sorghum	26	48	25	1	0	87	54
Soybeans	13	40	36	5	6	73	60
Range and Pasture	14	44	28	12	2	75	49

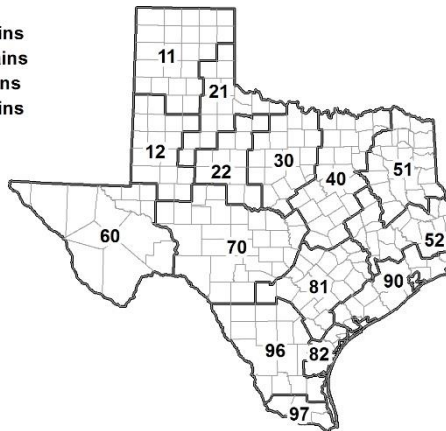
<sup>1</sup> The formula for the condition index is  $I = (5V + 25P + 60F + 90G + 110E)/100$  where I = crop condition index and V, P, F, G, E = percentage of crop rated very poor, poor, fair, good, excellent.

### Soil Moisture and Days Suitable by District

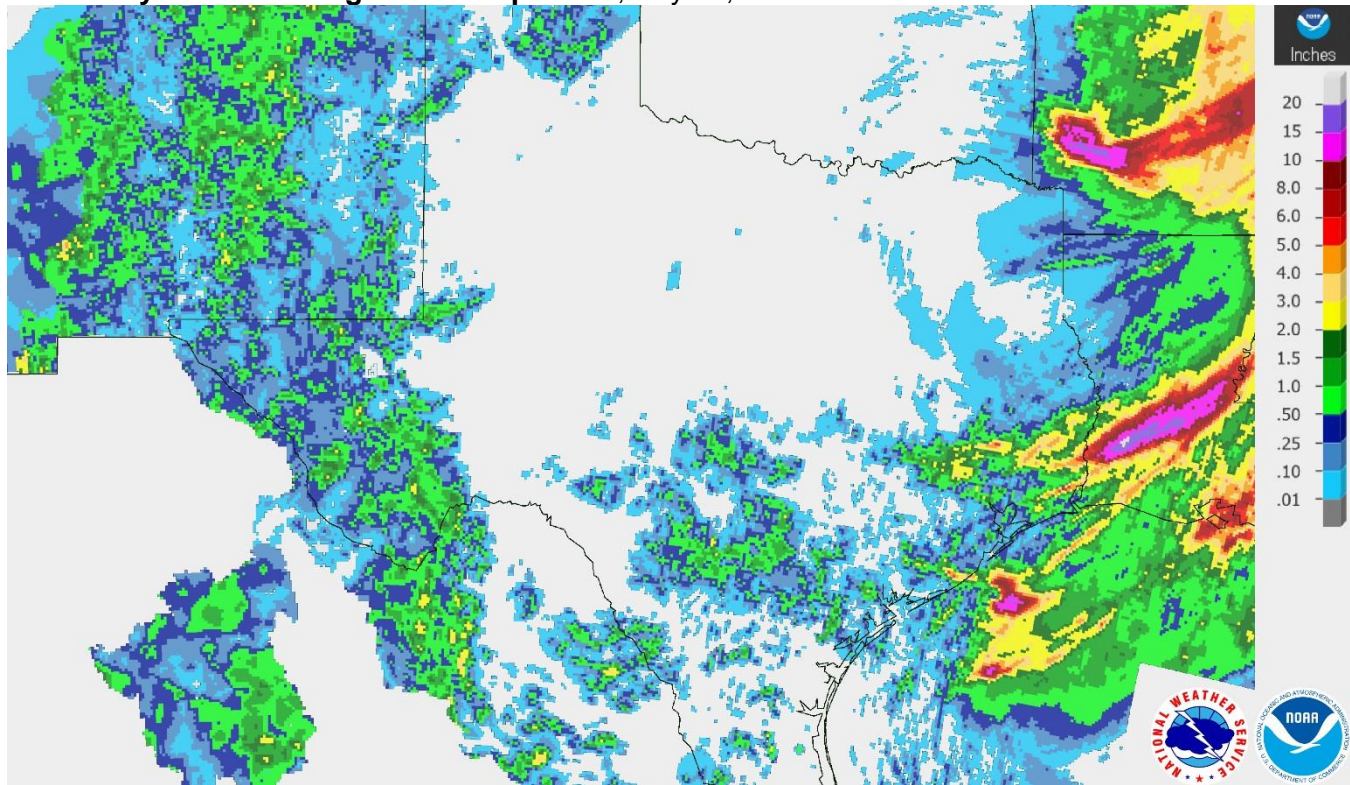
District	Topsoil Moisture Condition by District				Subsoil Moisture Condition by District				Days Suitable for Fieldwork
	Percentage of Acreage				Percentage of Acreage				
	Very Short	Short	Adequate	Surplus	Very Short	Short	Adequate	Surplus	
11	13	43	44	0	7	26	67	0	6.8
12	6	52	42	0	0	44	49	7	6.8
21	20	46	34	0	4	42	54	0	6.8
22	5	50	42	3	1	30	66	3	6.8
30	5	23	71	1	2	9	85	4	6.4
40	8	52	38	2	4	45	49	2	7.0
51	0	16	72	12	0	16	70	14	7.0
52	2	21	70	7	1	17	62	20	6.9
60	14	53	33	0	19	47	34	0	6.6
70	4	50	46	0	3	35	62	0	6.9
81	5	37	58	0	3	21	76	0	6.6
82	40	55	5	0	33	55	12	0	7.0
90	8	44	45	3	8	17	64	11	6.4
96	29	59	12	0	25	59	16	0	6.6
97	20	60	20	0	20	60	20	0	7.0
State	10	45	44	1	5	34	57	4	6.8

### Texas Agricultural Districts

- 11 Northern High Plains
- 12 Southern High Plains
- 21 Northern Low Plains
- 22 Southern Low Plains
- 30 Cross Timbers
- 40 Blacklands
- 51 North East
- 52 South East
- 60 Trans-Pecos
- 70 Edwards Plateau
- 81 South Central
- 82 Coastal Bend
- 90 Upper Coast
- 96 South
- 97 Lower Valley

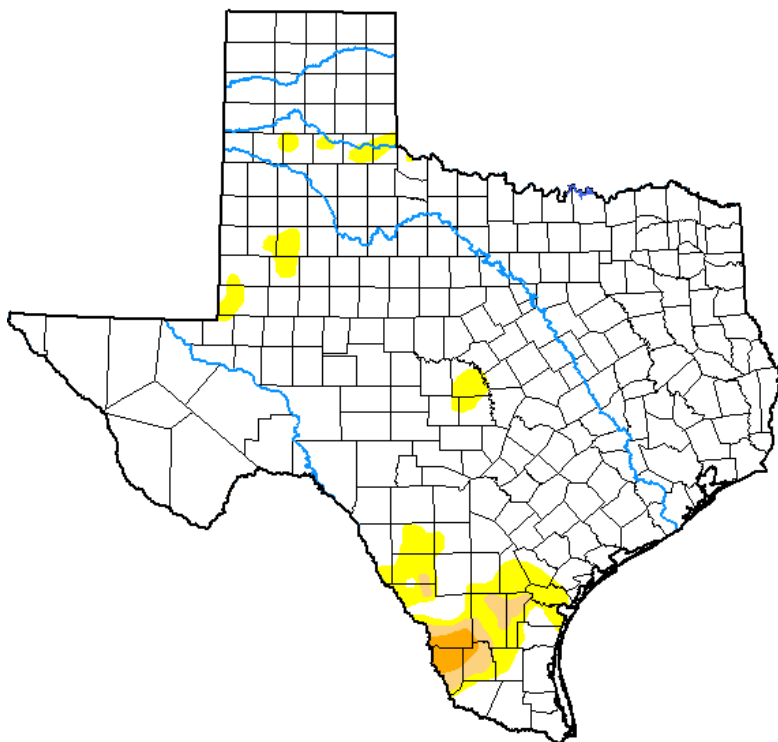


## Seven Day Observed Regional Precipitation, July 21, 2019.



Source: National Weather Service, [www.nws.noaa.gov](http://www.nws.noaa.gov).

## Drought Monitor, Valid July 16, 2019.



*Drought Conditions (Percent Area)*

	None	D0-D4	D1-D4	D2-D4	D3-D4	D4
<b>Current</b>	93.14	6.86	1.67	0.58	0.00	0.00
<b>Last Week</b> 07-09-2019	95.13	4.87	1.30	0.20	0.00	0.00
<b>3 Months Ago</b> 04-16-2019	74.85	25.15	5.22	0.00	0.00	0.00
<b>Start of Calendar Year</b> 01-01-2019	92.99	7.01	1.32	0.00	0.00	0.00
<b>Start of Water Year</b> 09-25-2018	57.46	42.54	20.19	7.03	0.96	0.00
<b>One Year Ago</b> 07-17-2018	27.67	72.33	45.81	18.78	3.38	0.00

Intensity:

- None
- D0 Abnormally Dry
- D1 Moderate Drought
- D2 Severe Drought
- D3 Extreme Drought
- D4 Exceptional Drought

*The Drought Monitor focuses on broad-scale conditions. Local conditions may vary. See accompanying text summary for forecast statements.*

Author:

Brad Rippey  
U.S. Department of Agriculture



Source: National Drought Mitigation Center, a partnership with USDA, U.S. Department of Commerce/NOAA, <http://droughtmonitor.unl.edu>.

## Texas Crop Progress and Condition (July 2019)

USDA, National Agricultural Statistics Service, Southern Plains Regional Field Office