



Texas Crop Progress and Condition

Southern Plains Regional Field Office
Post Office Box 70 Austin, Texas 78767
(800) 626-3142 · FAX (855) 270-2725 · www.nass.usda.gov/tx

Issue: TX-CW2819

Weekly Summary for August 5-August 11

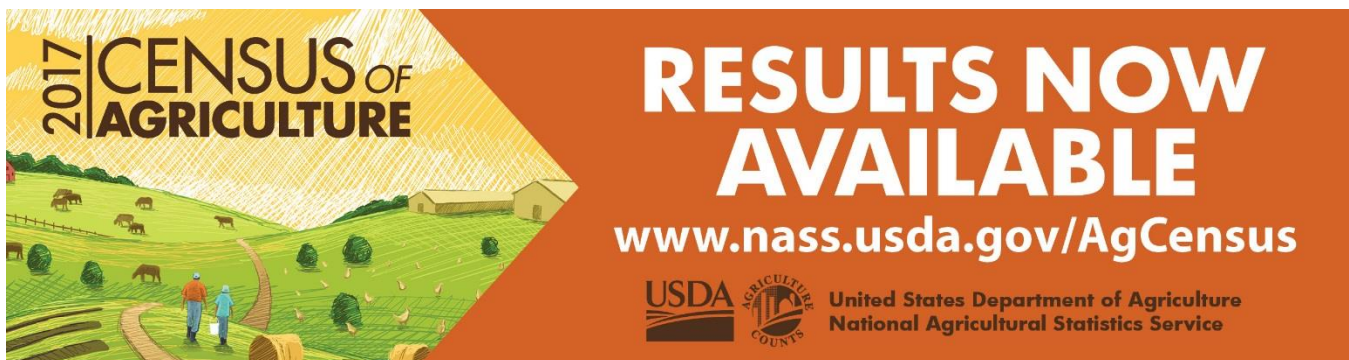
Released: August 12, 2019

Conditions across the state continued to be mostly hot and dry. These conditions, combined with the occasional winds, expanded the drought across South Central Texas, the Plains, the Coastal Bend and South Texas. While most of the state remained dry, minor precipitation ranging from trace amounts to 2 inches was received in the Plains, the Upper Coast and the Trans-Pecos.. There were 6.7 days suitable for fieldwork.

Row Crops: Cotton growth and development continued in the Northern Plains, but was showing signs of moisture stress in the Low Plains. Harvest was in full swing in the Coastal Bend, the Lower Valley and South Texas. Irrigation of corn, soybeans and sorghum was active in the Northern High Plains. Corn and sorghum harvest continued in the Blacklands, East Texas, the Edwards Plateau, South Central Texas, the Coastal Bend and South Texas. Rice harvest was ongoing in South Central Texas and the Upper Coast.

Fruit, Vegetable and Specialty Crops: Peas, okra, melons and tomatoes were progressing in North East Texas. Harvest of melons and cantaloupes in South Texas was nearing completion, while other vegetable crops were being irrigated. Pecan producers were setting weevil traps in the Southern High Plains.


Livestock, Range and Pasture: Livestock condition continued to be rated mostly fair to good across the state. However, weight gains were expected to slow down due to hot conditions. Producers in the southern parts of the state began to use more supplemental feeding due to a decrease in pasture availability. Pasture and range condition continued to decline throughout most of the state and was rated mostly fair to good.



2017 CENSUS OF AGRICULTURE

RESULTS NOW AVAILABLE

www.nass.usda.gov/AgCensus

USDA  United States Department of Agriculture
National Agricultural Statistics Service

Crop Progress

Stage	Percent of Acreage			
	Current Week	Previous Week	Previous Year	5 Year Average
Corn				
Dough	83	74	90	85
Dented	74	62	78	66
Mature	44	31	52	52
Cotton				
Squaring	96	94	94	96
Setting Bolls	72	50	68	69
Bolls Opening	31	14	17	13
Peanuts				
Pegging	83	63	79	84
Rice				
Headed	96	94	100	98
Harvested	21	8	41	36
Sorghum				
Headed	85	82	87	88
Coloring	72	71	77	73
Mature	65	63	61	62
Harvested	51	45	58	47
Soybeans				
Blooming	88	79	97	88
Setting Pods	74	60	75	72
Dropping Leaves	24	5	21	18
Sunflowers				
Harvested	39	34	54	29

Crop Condition

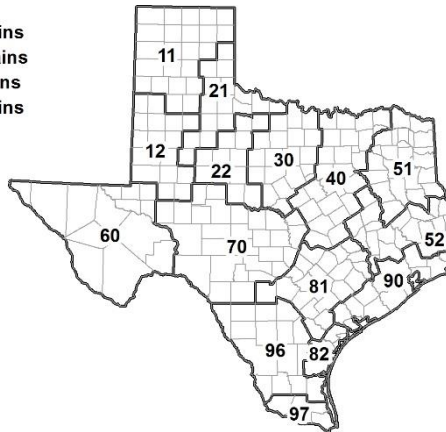
Crop	Percent of Acreage					Index ¹	
	Excellent	Good	Fair	Poor	Very Poor	2019	2018
Corn	13	43	37	6	1	77	54
Cotton	8	44	36	11	1	73	44
Peanuts	6	75	17	1	1	85	74
Rice	9	55	32	4	0	80	74
Sorghum	28	39	27	5	1	83	52
Soybeans	10	37	38	9	6	70	60
Range and Pasture	3	27	37	22	11	--	--

¹ The formula for the condition index is $I = (5V + 25P + 60F + 90G + 110E)/100$ where I = crop condition index and V, P, F, G, E = percentage of crop rated very poor, poor, fair, good, excellent.

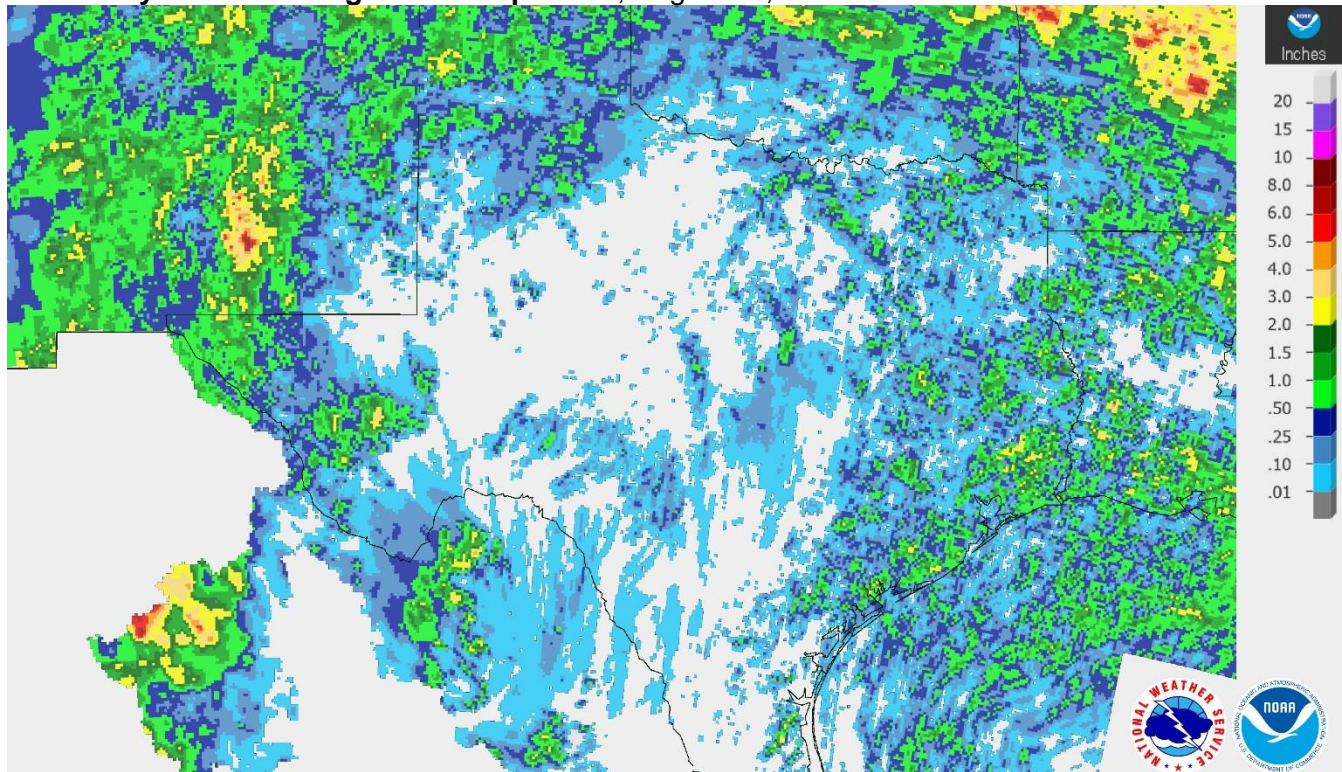
Soil Moisture and Days Suitable by District

District	Topsoil Moisture Condition by District				Subsoil Moisture Condition by District				Days Suitable for Fieldwork
	Percentage of Acreage				Percentage of Acreage				
	Very Short	Short	Adequate	Surplus	Very Short	Short	Adequate	Surplus	
11	26	60	14	0	17	41	42	0	7.0
12	11	71	18	0	10	62	28	0	5.8
21	47	38	15	0	30	52	18	0	6.4
22	29	59	12	0	4	67	29	0	6.8
30	16	55	29	0	14	37	49	0	7.0
40	31	52	17	0	30	48	22	0	6.7
51	9	43	44	4	13	35	48	4	6.9
52	5	56	33	6	4	49	41	6	6.9
60	15	53	32	0	54	12	34	0	6.6
70	49	37	14	0	13	62	25	0	6.6
81	26	59	15	0	14	62	24	0	6.8
82	42	50	8	0	34	55	11	0	7.0
90	46	31	23	0	10	46	43	1	7.0
96	42	55	3	0	43	54	3	0	7.0
97	13	51	32	4	9	40	40	11	7.0
State	26	56	18	0	17	50	32	1	6.7

- 11 Northern High Plains
- 12 Southern High Plains
- 21 Northern Low Plains
- 22 Southern Low Plains
- 30 Cross Timbers
- 40 Blacklands
- 51 North East
- 52 South East
- 60 Trans-Pecos
- 70 Edwards Plateau
- 81 South Central
- 82 Coastal Bend
- 90 Upper Coast
- 96 South
- 97 Lower Valley

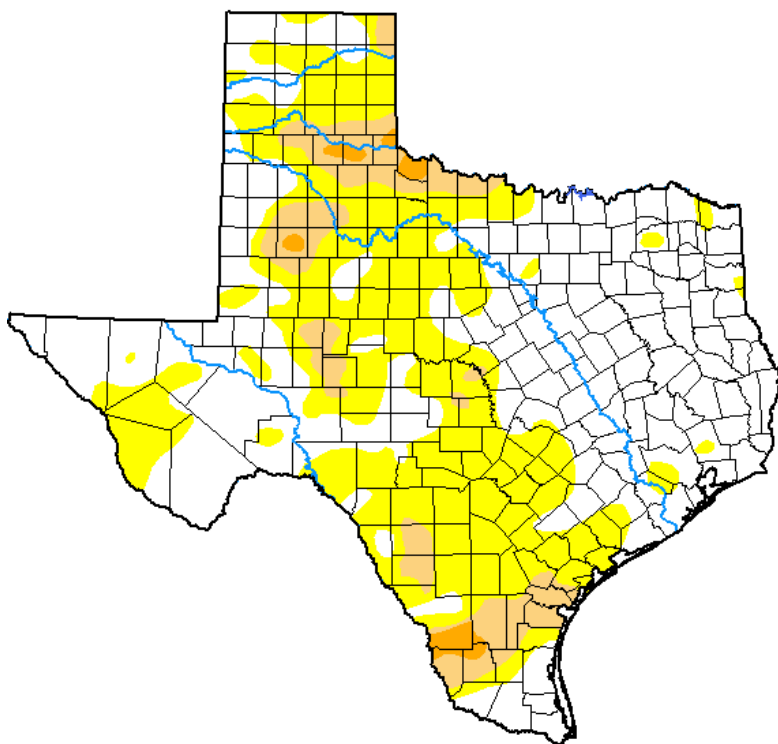


Seven Day Observed Regional Precipitation, August 11, 2019.



Source: National Weather Service, www.nws.noaa.gov.

Drought Monitor, Valid August 6, 2019.



Drought Conditions (Percent Area)

	None	D0-D4	D1-D4	D2-D4	D3-D4	D4
Current	53.05	46.95	9.79	1.21	0.00	0.00
Last Week 07-30-2019	76.49	23.51	4.31	0.42	0.00	0.00
3 Months Ago 05-07-2019	96.95	3.05	0.00	0.00	0.00	0.00
Start of Calendar Year 01-01-2019	92.99	7.01	1.32	0.00	0.00	0.00
Start of Water Year 09-25-2018	57.46	42.54	20.19	7.03	0.96	0.00
One Year Ago 08-07-2018	21.55	78.45	63.94	45.45	19.43	0.36

Intensity:

- None
- D0 Abnormally Dry
- D1 Moderate Drought
- D2 Severe Drought
- D3 Extreme Drought
- D4 Exceptional Drought

The Drought Monitor focuses on broad-scale conditions. Local conditions may vary. See accompanying text summary for forecast statements.

Author:

Richard Tinker
CPC/NOAA/NWS/NCEP



Source: National Drought Mitigation Center, a partnership with USDA, U.S. Department of Commerce/NOAA, <http://droughtmonitor.unl.edu>.

Texas Crop Progress and Condition (12 August 2019)

USDA, National Agricultural Statistics Service, Southern Plains Regional Field Office