



Texas Crop Progress and Condition

Southern Plains Regional Field Office
Post Office Box 70 Austin, Texas 78767
(800) 626-3142 · FAX (855) 270-2725 · www.nass.usda.gov/tx

Issue: TX-CW2919

Weekly Summary for August 12-August 18

Released: August 19, 2019

The hot and dry weather continued across most of the state during the past week. The areas affected by severe drought were expanding in the Northern Plains, and areas in South Texas reached levels of extreme drought. Precipitation ranging from trace amounts up to 2 inches was received in areas of the Northern Plains, the Trans-Pecos, the Edwards Plateau, South East Texas and the Upper Coast. The rest of the state received little to no precipitation. There were 6.8 days suitable for fieldwork.

Row Crops: Dryland cotton was in need of moisture in the Plains. Cotton was blooming in the Southern Low Plains and the Edwards Plateau. Stink bugs damaged upland cotton bolls in the Trans-Pecos. Harvest continued in Coastal Bend, the Lower Valley and South Texas. Meanwhile, cotton producers in South Central Texas and the Upper Coast were applying defoliant. Rice harvest was in full swing in South Central Texas and the Upper Coast. Sugarcane aphids were affecting sorghum in the Southern Low Plains, but harvest continued regardless. Corn and sorghum harvest continued in the Northern Low Plains, East Texas, the Edwards Plateau, South Central Texas and the Upper Coast. Soybean harvest was underway in the Upper Coast.

Fruit, Vegetable and Specialty Crops: Harvest of melons and cantaloupes in South Texas was nearing completion. Vegetables in East Texas were in need of moisture. Pecan orchards were being irrigated in the Cross Timbers and the Edwards Plateau.

Livestock, Range and Pasture: Lack of available forage and high temperatures pushed livestock condition to decline in many areas of the state, most notable in areas of the Trans-Pecos and the Edwards Plateau. Supplemental feeding continued in the southern parts of the state. Pasture and range condition continued to decline throughout most of the state and was rated mostly fair to poor.

Crop Progress

Stage	Percent of Acreage			
	Current Week	Previous Week	Previous Year	5 Year Average
Corn				
Dough	91	83	93	90
Dented	80	74	82	71
Mature	49	44	57	57
Harvested	26	(NA)	51	44
Cotton				
Setting Bolls	80	72	80	80
Bolls Opening	32	31	19	15
Harvested	4	(NA)	8	5
Peanuts				
Pegging	84	83	89	93
Rice				
Harvested	36	21	58	54
Sorghum				
Headed	89	85	90	90
Coloring	77	72	80	78
Mature	70	65	64	67
Harvested	54	51	60	51
Soybeans				
Blooming	92	88	100	92
Setting Pods	75	74	80	79
Dropping Leaves	29	24	29	29
Harvested	8	(NA)	5	2
Sunflowers				
Harvested	42	39	57	35

(NA) Not available.

Crop Condition

Crop	Percent of Acreage					Index ¹	
	Excellent	Good	Fair	Poor	Very Poor	2019	2018
Corn	10	42	38	8	2	74	54
Cotton	6	36	39	17	2	67	45
Peanuts	6	75	18	1	0	85	76
Rice	8	56	32	4	0	79	75
Sorghum	28	39	27	5	1	83	52
Soybeans	6	40	38	10	6	68	63
Range and Pasture	2	22	35	27	14	--	--

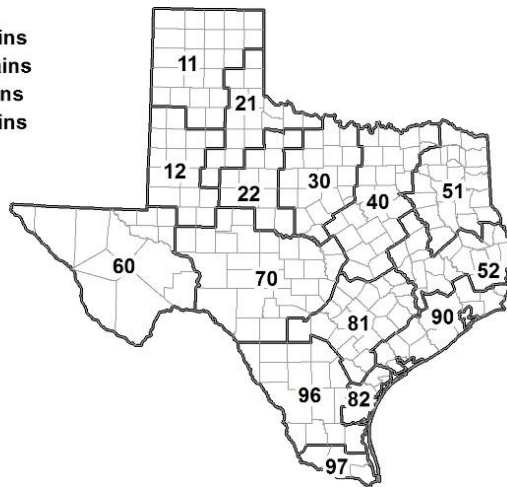
¹ The formula for the condition index is $I = (5V + 25P + 60F + 90G + 110E)/100$ where I = crop condition index and V, P, F, G, E = percentage of crop rated very poor, poor, fair, good, excellent.

Soil Moisture and Days Suitable by District

District	Topsoil Moisture Condition by District				Subsoil Moisture Condition by District				Days Suitable for Fieldwork
	Percentage of Acreage				Percentage of Acreage				
	Very Short	Short	Adequate	Surplus	Very Short	Short	Adequate	Surplus	
11	45	52	3	0	35	60	5	0	7.0
12	11	82	7	0	11	71	18	0	6.8
21	52	36	12	0	32	53	15	0	6.8
22	49	46	5	0	24	61	15	0	6.6
30	15	63	22	0	12	52	36	0	6.5
40	34	42	24	0	31	44	25	0	6.6
51	11	54	31	4	19	42	35	4	6.8
52	27	44	23	6	13	54	27	6	6.8
60	11	34	55	0	16	50	34	0	6.3
70	51	33	16	0	16	54	30	0	6.8
81	38	51	11	0	25	63	12	0	6.8
82	54	46	0	0	44	52	4	0	7.0
90	45	36	19	0	11	56	33	0	6.7
96	59	39	2	0	52	46	2	0	6.7
97	20	55	25	0	13	47	36	4	7.0
State	34	54	12	0	24	58	18	0	6.8

Texas Agricultural Districts

- 11 Northern High Plains
- 12 Southern High Plains
- 21 Northern Low Plains
- 22 Southern Low Plains
- 30 Cross Timbers
- 40 Blacklands
- 51 North East
- 52 South East
- 60 Trans-Pecos
- 70 Edwards Plateau
- 81 South Central
- 82 Coastal Bend
- 90 Upper Coast
- 96 South
- 97 Lower Valley



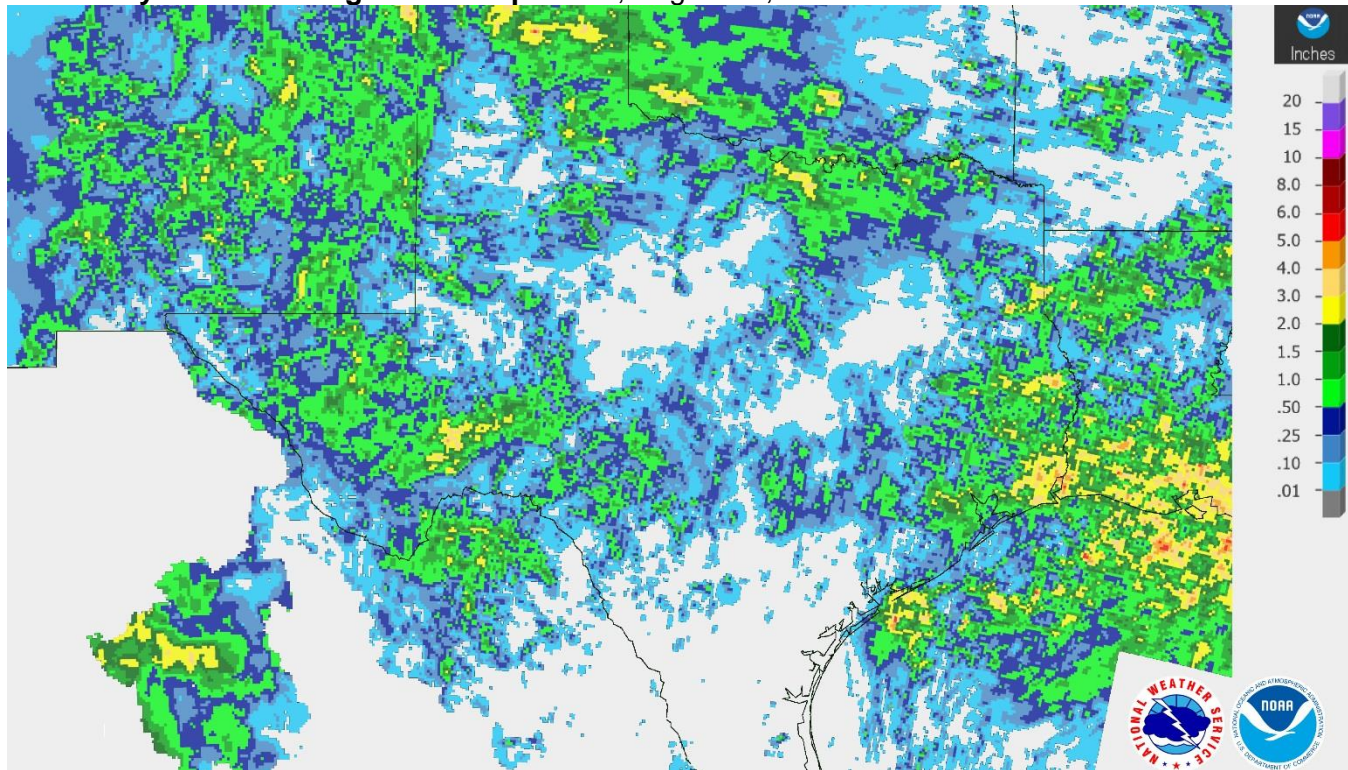
2017 CENSUS OF AGRICULTURE

RESULTS NOW AVAILABLE

www.nass.usda.gov/AgCensus

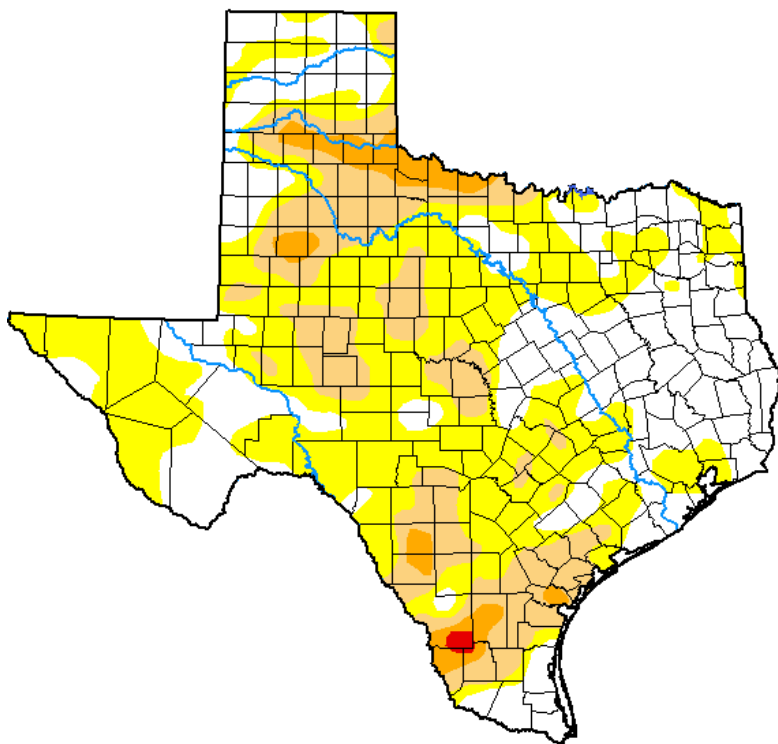
United States Department of Agriculture
National Agricultural Statistics Service

Seven Day Observed Regional Precipitation, August 18, 2019.



Source: National Weather Service, www.nws.noaa.gov.

Drought Monitor, Valid August 13, 2019.



Drought Conditions (Percent Area)

	None	D0-D4	D1-D4	D2-D4	D3-D4	D4
Current	35.20	64.80	22.18	4.08	0.21	0.00
Last Week 08-06-2019	53.05	46.95	9.79	1.21	0.00	0.00
3 Months Ago 05-14-2019	99.57	0.43	0.00	0.00	0.00	0.00
Start of Calendar Year 01-01-2019	92.99	7.01	1.32	0.00	0.00	0.00
Start of Water Year 09-25-2018	57.46	42.54	20.19	7.03	0.96	0.00
One Year Ago 08-14-2018	22.28	77.72	59.18	32.14	6.22	0.35

Intensity:

- None
- D0 Abnormally Dry
- D1 Moderate Drought
- D2 Severe Drought
- D3 Extreme Drought
- D4 Exceptional Drought

The Drought Monitor focuses on broad-scale conditions. Local conditions may vary. See accompanying text summary for forecast statements.

Author:

Richard Tinker
CPC/NOAA/NWS/NCEP



Source: National Drought Mitigation Center, a partnership with USDA, U.S. Department of Commerce/NOAA, <http://droughtmonitor.unl.edu>.

Texas Crop Progress and Condition (19 August 2019)

USDA, National Agricultural Statistics Service, Southern Plains Regional Field Office