



Texas Crop Progress and Condition

Southern Plains Regional Field Office

Post Office Box 70 Austin, Texas 78767

(800) 626-3142 · FAX (855) 270-2725 · www.nass.usda.gov/tx

Issue: TX-CW3219

Weekly Summary for September 2- 8

Released: September 9, 2019

Hot and dry conditions continued throughout Texas last week. Precipitation in South Texas and the Lower Valley ranged from 1 inch up to 4 inches and areas of the Trans-Pecos, the Southern Low Plains and the Northern High Plains received upwards of 2 inches. However, the rest of the state received little to no precipitation. There were 6.6 days suitable for fieldwork.

Small Grains: Some producers seeded oats in South Texas, while preparations for small grains seedings continued in the Plains, the Cross Timbers and the Blacklands.

Row Crops: Producers were irrigating cotton in the Plains, while dryland cotton in this area remained in mostly poor condition. Cotton harvest continued in South Texas, the Lower Valley, the Upper Coast and the Coastal Bend. Late planted cotton and sorghum were being irrigated in the Northern High Plains. Rice harvest continued in some areas of the Upper Coast.

Fruit, Vegetable and Specialty Crops: Vegetable field preparation activities were underway in South Texas. Pecan orchards were in mostly good condition across the state.

Livestock, Range and Pasture: Livestock condition remained mostly rated fair to good across the state. The use of supplemental feed increased throughout many parts of the state due to lack of grazing. The decline of range and pasture condition continued in many areas of the state. There were some reports of wildfires in the Low Plains and the Southern High Plains.

Crop Progress

Stage	Percent of Acreage			
	Current Week	Previous Week	Previous Year	5 Year Average
Corn				
Dented	94	89	92	86
Mature	58	52	71	68
Harvested	52	49	62	58
Cotton				
Bolls Opening	39	38	29	29
Harvested	13	12	17	12
Peanuts				
Pegging	96	92	97	99
Mature	10	6	14	11
Rice				
Harvested	78	63	91	88
Sorghum				
Coloring	93	90	89	85
Mature	80	76	77	76
Harvested	75	72	66	60
Soybeans				
Setting Pods	85	78	94	98
Dropping Leaves	58	46	56	56
Harvested	40	31	35	34
Sunflowers				
Harvested	57	48	62	51

Crop Condition

Crop	Percent of Acreage					Index ¹	
	Excellent	Good	Fair	Poor	Very Poor	2019	2018
Corn	11	41	38	9	1	74	54
Cotton	2	30	46	19	3	62	44
Peanuts	2	68	30	0	0	81	71
Rice	11	54	30	4	1	80	75
Sorghum	25	40	29	5	1	82	52
Soybeans	11	34	38	12	5	69	59
Range and Pasture	1	18	33	30	18	--	--

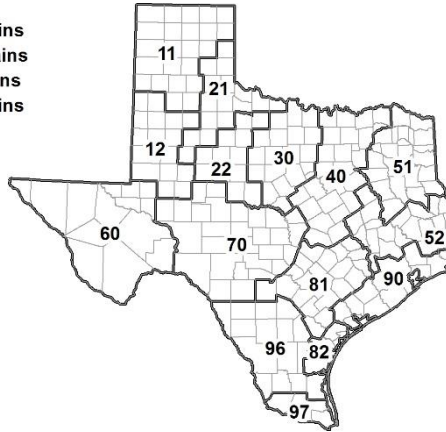
¹ The formula for the condition index is $I = (5V + 25P + 60F + 90G + 110E)/100$ where I = crop condition index and V, P, F, G, E = percentage of crop rated very poor, poor, fair, good, excellent.

Soil Moisture and Days Suitable by District

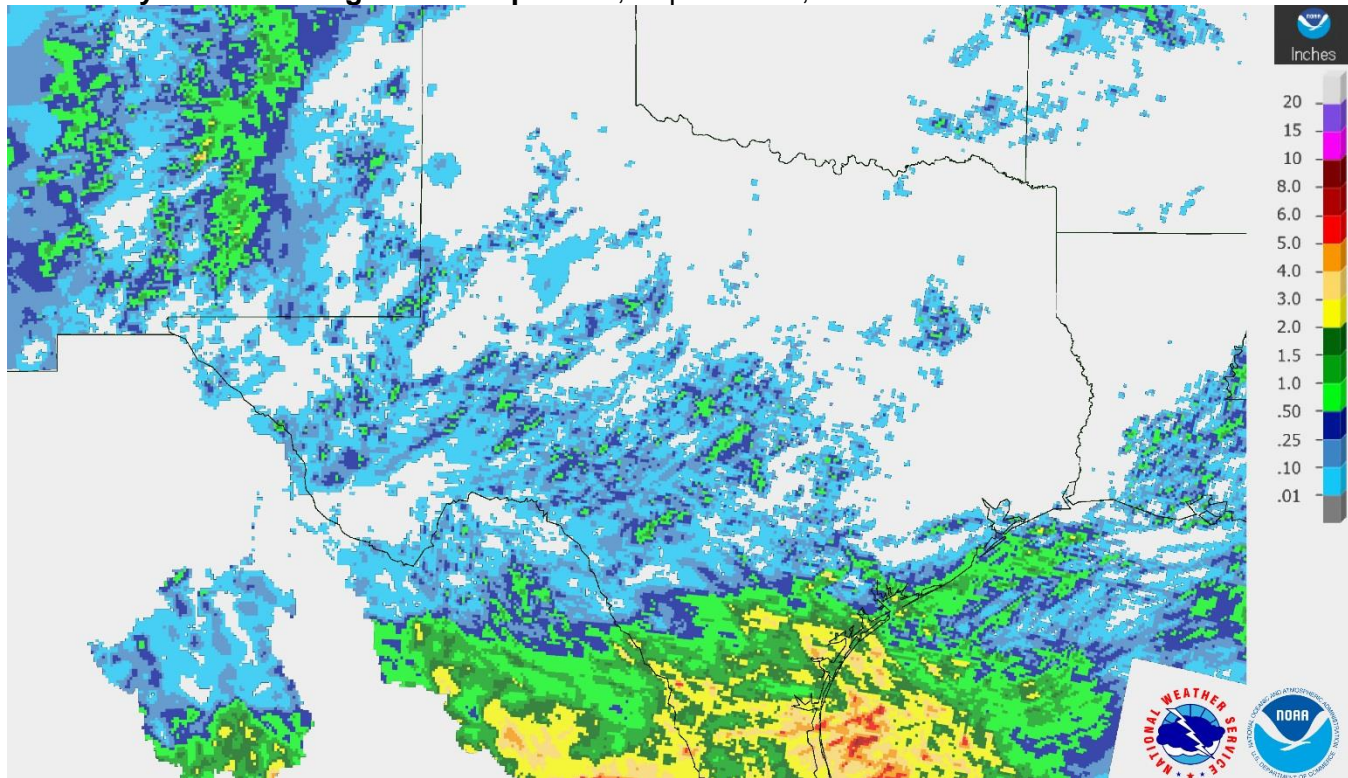
District	Topsoil Moisture Condition by District				Subsoil Moisture Condition by District				Days Suitable for Fieldwork
	Percentage of Acreage				Percentage of Acreage				
	Very Short	Short	Adequate	Surplus	Very Short	Short	Adequate	Surplus	
11	47	43	10	0	24	53	23	0	6.9
12	15	77	8	0	10	76	14	0	7.0
21	57	28	15	0	39	45	16	0	6.3
22	49	51	0	0	38	54	8	0	6.6
30	12	60	28	0	9	59	32	0	5.7
40	36	37	27	0	40	33	27	0	6.5
51	17	59	24	0	17	52	27	4	6.8
52	14	64	14	8	12	61	19	8	7.0
60	23	16	61	0	26	10	64	0	6.3
70	69	21	10	0	33	57	10	0	6.8
81	49	46	5	0	39	57	4	0	6.6
82	45	47	8	0	60	33	6	1	6.1
90	38	33	28	1	18	48	31	3	6.8
96	51	36	12	1	66	25	9	0	6.1
97	16	40	40	4	5	40	48	7	4.1
State	36	49	15	0	26	53	20	1	6.6

Texas Agricultural Districts

- 11 Northern High Plains
- 12 Southern High Plains
- 21 Northern Low Plains
- 22 Southern Low Plains
- 30 Cross Timbers
- 40 Blacklands
- 51 North East
- 52 South East
- 60 Trans-Pecos
- 70 Edwards Plateau
- 81 South Central
- 82 Coastal Bend
- 90 Upper Coast
- 96 South
- 97 Lower Valley

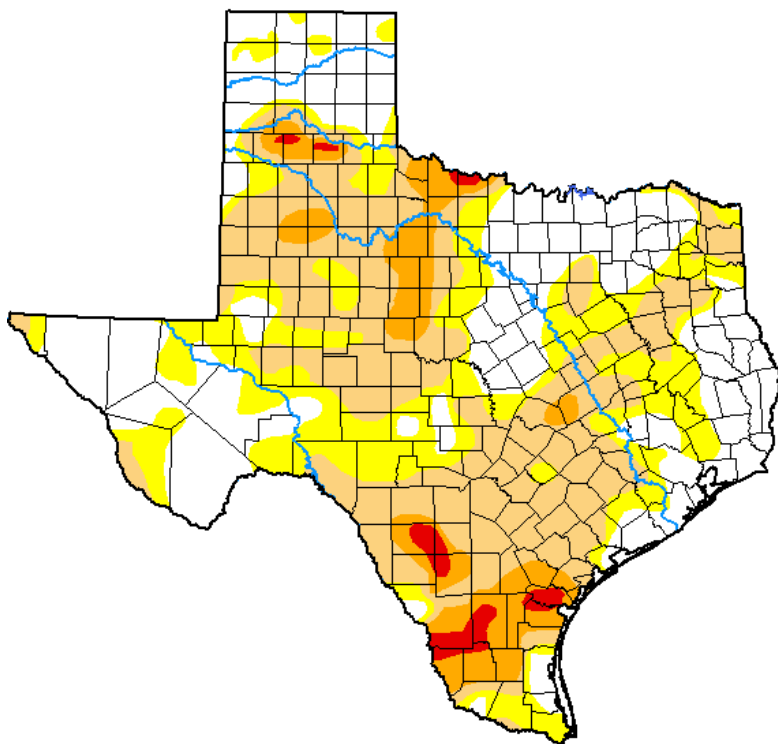


Seven Day Observed Regional Precipitation, September 8, 2019.



Source: National Weather Service, www.nws.noaa.gov.

Drought Monitor, Valid September 3, 2019.



Drought Conditions (Percent Area)

	None	D0-D4	D1-D4	D2-D4	D3-D4	D4
Current	33.59	66.41	42.90	10.26	1.73	0.00
Last Week 08-27-2019	25.90	74.10	37.58	8.75	1.21	0.00
3 Months Ago 06-04-2019	93.83	6.17	0.18	0.00	0.00	0.00
Start of Calendar Year 01-01-2019	92.99	7.01	1.32	0.00	0.00	0.00
Start of Water Year 09-25-2018	57.46	42.54	20.19	7.03	0.96	0.00
One Year Ago 09-04-2018	19.92	80.08	64.28	27.09	5.51	0.12

Intensity:

- None
- D0 Abnormally Dry
- D1 Moderate Drought
- D2 Severe Drought
- D3 Extreme Drought
- D4 Exceptional Drought

The Drought Monitor focuses on broad-scale conditions. Local conditions may vary. See accompanying text summary for forecast statements.

Author:

David Miskus
NOAA/NWS/NCEP/CPC



Source: National Drought Mitigation Center, a partnership with USDA, U.S. Department of Commerce/NOAA, <http://droughtmonitor.unl.edu>.

Texas Crop Progress and Condition (9 September 2019)

USDA, National Agricultural Statistics Service, Southern Plains Regional Field Office