



Texas Crop Progress and Condition

Southern Plains Regional Field Office
Post Office Box 70 Austin, Texas 78767
(800) 626-3142 · FAX (855) 270-2725 · www.nass.usda.gov/tx

Issue: TX-CW3619

Weekly Summary for September 30-October 6

Released: October 7, 2019

Weather conditions continued mostly hot and dry across the state of Texas. Precipitation in the High Plains ranged from 1 inch to upwards of 6 inches. Isolated areas in the Trans-Pecos, South Texas, East Texas and the Cross Timbers received between 2 and 3 inches of rain. The rest of the state received little to no precipitation. There were 5.5 days suitable for fieldwork.

Small Grains: Small grain seeding was underway in the Southern Low Plains, South Texas and the Blacklands. Heavy rains delayed seeding progress in the Northern High Plains. Producers in the Cross Timbers and the Edwards Plateau were waiting for more moisture to begin seeding.

Row Crops: In the Northern High Plains Cotton producers were concerned with possible loss of quality due to the lack of heat units and excess moisture. Bolls were opening in most areas of the High and Low Plains. Harvest was active in the Cross Timbers, the Blacklands, the Edwards Plateau and the Upper Coast. Corn harvest was underway in the Northern High Plains, while producers were waiting for sorghum to mature and fields to dry to begin harvest. Peanut digging was underway in South Texas.

Fruit, Vegetable and Specialty Crops: Pecan harvest was underway in areas of South Central Texas. Spinach and onion planting was active, while cabbage progress continued in South Texas.

Livestock, Range and Pasture: Livestock condition was mostly fair to good across the state. Supplemental feeding continued in many areas to maintain body condition. Army worm infestations were reported in the Blacklands and East Texas. Recent rains improved pasture conditions in areas of the High Plains. Range and pasture condition was rated mostly fair to poor across the state.

Crop Progress

Stage	Percent of Acreage			
	Current Week	Previous Week	Previous Year	5 Year Average
Corn				
Mature	84	79	87	86
Harvested	74	72	72	71
Cotton				
Bolls Opening	77	71	68	65
Harvested	25	18	28	22
Peanuts				
Mature	33	26	34	32
Harvested	1	0	8	13
Sorghum				
Mature	93	91	85	85
Harvested	87	86	77	72
Soybeans				
Dropping Leaves	82	80	83	83
Harvested	70	68	70	58
Sunflowers				
Harvested	71	69	68	66
Winter Wheat				
Planted	49	34	52	48
Emerged	25	6	18	23

Crop Condition

Crop	Percent of Acreage					Index ¹	
	Excellent	Good	Fair	Poor	Very Poor	2019	2018
Corn	11	41	38	9	1	74	54
Cotton	4	26	47	19	4	61	54
Peanuts	0	63	36	1	0	79	73
Rice	11	54	30	4	1	80	(NA)
Sorghum	25	40	29	5	1	82	52
Soybeans	1	30	48	16	5	61	64
Range and Pasture	2	17	32	30	19	--	--

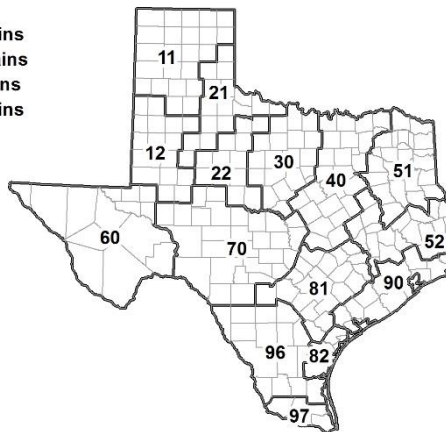
¹ The formula for the condition index is $I = (5V + 25P + 60F + 90G + 110E)/100$ where I = crop condition index and V, P, F, G, E = percentage of crop rated very poor, poor, fair, good, excellent.
 (NA) Not available.

Soil Moisture and Days Suitable by District

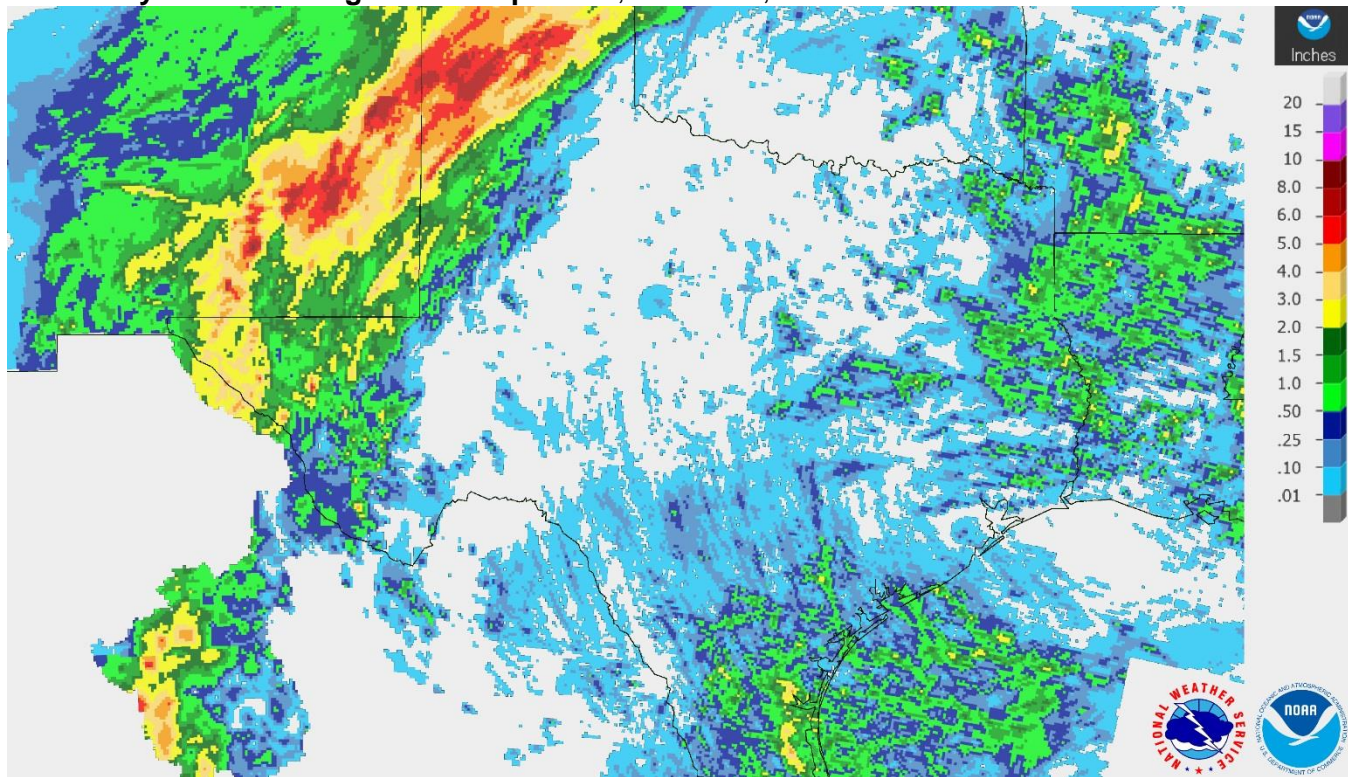
District	Topsoil Moisture Condition by District				Subsoil Moisture Condition by District				Days Suitable for Fieldwork
	Percentage of Acreage				Percentage of Acreage				
	Very Short	Short	Adequate	Surplus	Very Short	Short	Adequate	Surplus	
11	2	5	42	51	1	10	76	13	5.0
12	1	23	59	17	3	36	41	20	3.3
21	18	45	37	0	17	46	37	0	5.7
22	48	44	8	0	42	46	12	0	6.5
30	33	41	26	0	23	46	31	0	6.4
40	38	41	21	0	41	40	19	0	6.7
51	24	48	28	0	27	36	33	4	6.8
52	32	33	26	9	31	34	26	9	6.8
60	19	15	66	0	26	18	56	0	4.1
70	62	31	7	0	44	52	4	0	7.0
81	38	45	17	0	43	45	12	0	6.5
82	24	41	34	1	39	34	27	0	7.0
90	9	31	47	13	9	38	35	18	5.5
96	45	36	19	0	46	32	21	1	6.7
97	13	37	43	7	9	37	47	7	4.1
State	21	30	34	15	20	34	38	8	5.5

Texas Agricultural Districts

- 11 Northern High Plains
- 12 Southern High Plains
- 21 Northern Low Plains
- 22 Southern Low Plains
- 30 Cross Timbers
- 40 Blacklands
- 51 North East
- 52 South East
- 60 Trans-Pecos
- 70 Edwards Plateau
- 81 South Central
- 82 Coastal Bend
- 90 Upper Coast
- 96 South
- 97 Lower Valley

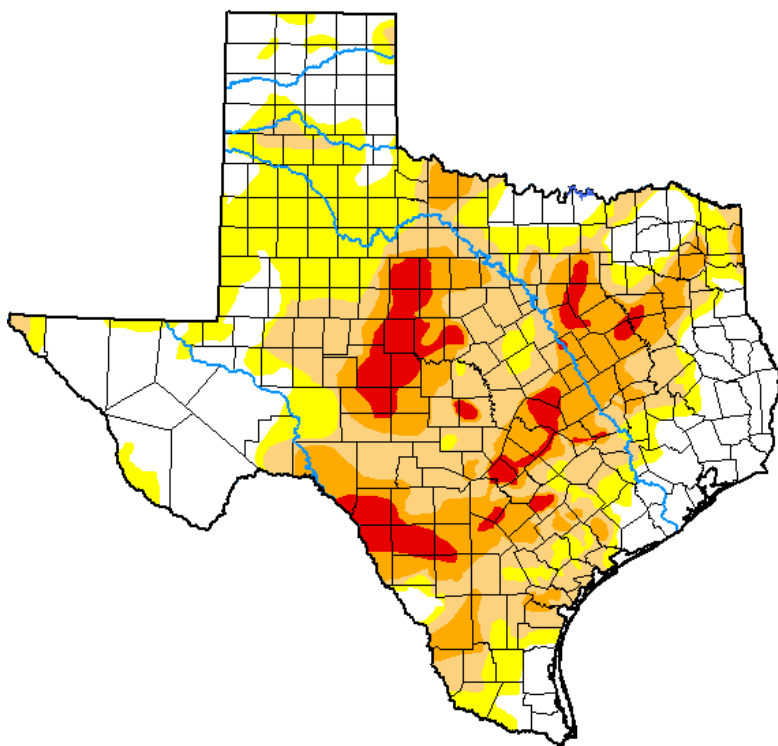


Seven Day Observed Regional Precipitation, October 6, 2019.



Source: National Weather Service, www.nws.noaa.gov.

Drought Monitor, Valid October 1, 2019.



Drought Conditions (Percent Area)

	None	D0-D4	D1-D4	D2-D4	D3-D4	D4
Current	31.74	68.26	46.05	22.33	6.32	0.00
Last Week 09-24-2019	34.78	65.22	48.33	19.69	3.50	0.00
3 Months Ago 07-02-2019	94.84	5.16	1.34	0.05	0.00	0.00
Start of Calendar Year 01-01-2019	92.99	7.01	1.32	0.00	0.00	0.00
Start of Water Year 10-01-2019	31.74	68.26	46.05	22.33	6.32	0.00
One Year Ago 10-02-2018	61.59	38.41	18.01	7.04	1.04	0.00

Intensity:

- None
- D0 Abnormally Dry
- D1 Moderate Drought
- D2 Severe Drought
- D3 Extreme Drought
- D4 Exceptional Drought

The Drought Monitor focuses on broad-scale conditions. Local conditions may vary. See accompanying text summary for forecast statements.

Author:

Brian Fuchs
National Drought Mitigation Center



Source: National Drought Mitigation Center, a partnership with USDA, U.S. Department of Commerce/NOAA, <http://droughtmonitor.unl.edu>.

Texas Crop Progress and Condition (6 October 2019)

USDA, National Agricultural Statistics Service, Southern Plains Regional Field Office