



Texas Crop Progress and Condition

Southern Plains Regional Field Office
Post Office Box 70 Austin, Texas 78767
(800) 626-3142 · FAX (855) 270-2725 · www.nass.usda.gov/tx

Issue: TX-CW3719

Weekly Summary for October 7-13

Released: October 15, 2019

Weather conditions were mostly cool and dry across the state last week. Freezing temperatures were reported in the Northern Plains and the Southern High Plains, causing damage to some row crops as two fairly strong cold fronts were experienced last week. Precipitation ranging from 0.5 of an inch to upwards of 2 inches was reported in East Texas, the Blacklands and South Central Texas. The rest of the state received little to no rainfall. There were 5.9 days suitable for fieldwork.

Small Grains: Small grain seeding was ongoing in the Northern High Plains. Lack of soil moisture slowed small grain seeding in the Southern Low Plains, the Cross Timbers and the Blacklands. Producers in the Edwards Plateau were waiting for cooler temperatures and more moisture to begin seeding operations.

Row Crops: Cotton producers discontinued defoliating cotton after the freeze in the Northern Plains and the Southern High Plains, with some reports of damage and leaves sticking due to the freeze. Harvest was active in the Southern Low Plains, the Cross Timbers, South East Texas, the Trans-Pecos and the Edwards Plateau. Corn harvest was ongoing in the Northern High Plains. Peanut digging continued in South Texas and the Cross Timbers.

Fruit, Vegetable and Specialty Crops: Cabbage and spinach were making progress in South Texas. Pecan harvest started in areas of the Cross Timbers, South Central Texas and the Edwards Plateau.

Livestock, Range and Pasture: Livestock condition remained mostly fair to good across the state. The use of supplemental feeding increased in the Plains and the Cross Timbers. Range and pasture condition decreased to mostly poor to fair across the state.

Crop Condition

Crop	Percent of Acreage					Index ¹	
	Excellent	Good	Fair	Poor	Very Poor	2019	2018
Corn	11	41	38	9	1	74	54
Cotton	5	21	47	22	5	58	53
Peanuts	1	59	38	2	0	78	77
Sorghum	25	40	29	5	1	82	52
Soybeans	1	30	48	16	5	61	64
Range and Pasture	2	15	30	36	17	--	--

¹ The formula for the condition index is $I = (5V + 25P + 60F + 90G + 110E)/100$ where I = crop condition index and V, P, F, G, E = percentage of crop rated very poor, poor, fair, good, excellent.

Crop Progress

Stage	Percent of Acreage			
	Current Week	Previous Week	Previous Year	5 Year Average
Corn				
Mature	91	84	90	90
Harvested	77	74	75	75
Cotton				
Bolls Opening	81	77	78	76
Harvested	27	25	30	25
Peanuts				
Mature	43	33	48	43
Harvested	15	1	13	19
Sorghum				
Mature	96	93	88	88
Harvested	89	87	80	75
Soybeans				
Dropping Leaves	85	82	88	87
Harvested	72	70	72	65
Sunflowers				
Harvested	73	71	70	70
Winter Wheat				
Planted	57	49	59	59
Emerged	40	25	33	33
Oats				
Planted	52	(NA)	50	49

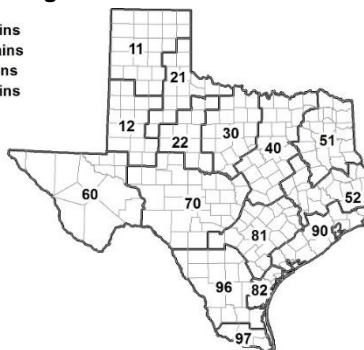
(NA) Not available.

Soil Moisture and Days Suitable by District

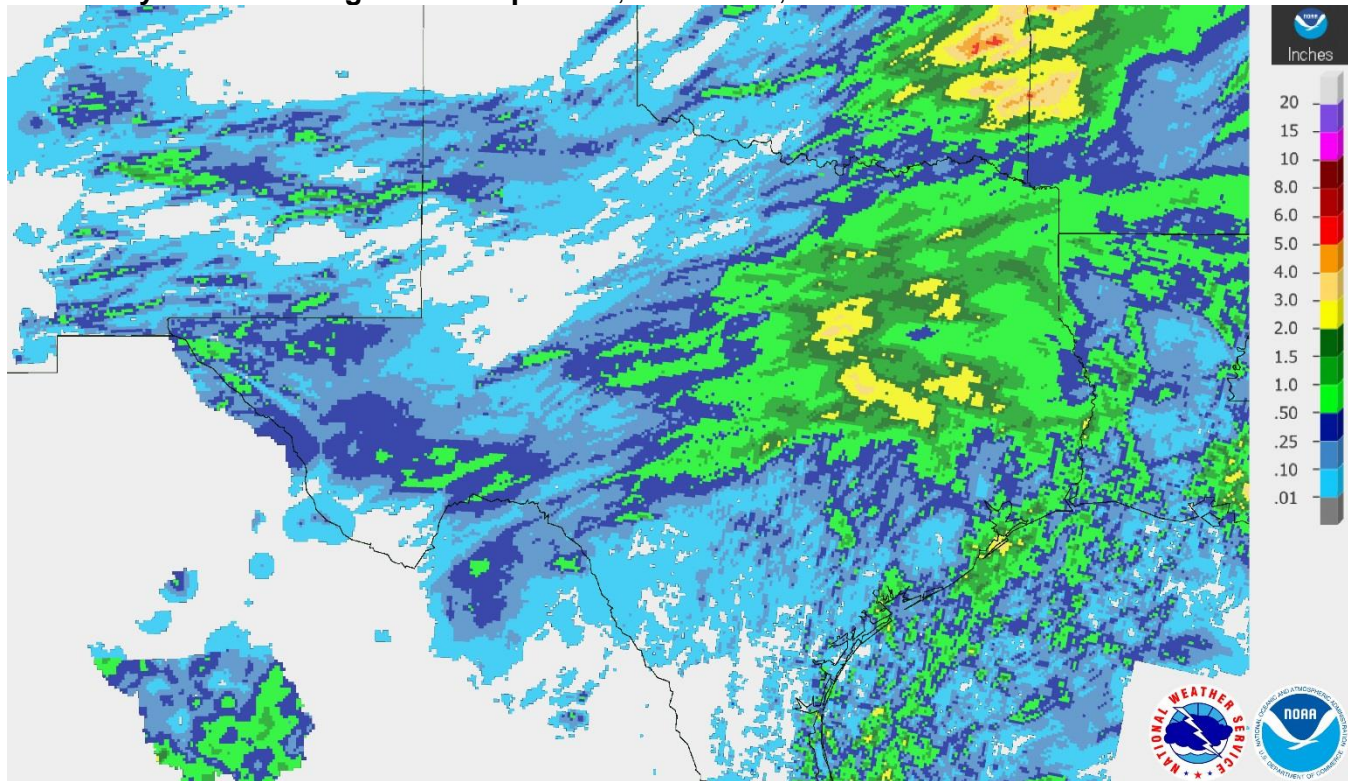
District	Topsoil Moisture Condition by District				Subsoil Moisture Condition by District				Days Suitable for Fieldwork
	Percentage of Acreage				Percentage of Acreage				
	Very Short	Short	Adequate	Surplus	Very Short	Short	Adequate	Surplus	
11	3	17	73	7	3	11	80	6	5.0
12	2	29	56	13	5	45	36	14	5.6
21	19	39	42	0	17	39	44	0	6.3
22	47	38	13	2	39	45	14	2	6.6
30	31	46	23	0	26	50	24	0	5.8
40	22	43	35	0	35	36	29	0	5.5
51	24	48	28	0	27	36	33	4	6.8
52	1	63	34	2	27	38	31	4	5.3
60	14	13	73	0	17	13	70	0	6.3
70	47	44	8	1	39	58	3	0	7.0
81	38	44	18	0	42	48	10	0	6.6
82	16	54	30	0	32	45	23	0	7.0
90	10	48	37	5	10	51	33	6	6.4
96	50	45	5	0	50	44	6	0	6.6
97	13	37	43	7	9	37	47	7	7.0
State	18	35	42	5	20	37	38	5	5.9

Texas Agricultural Districts

- 11 Northern High Plains
- 12 Southern High Plains
- 21 Northern Low Plains
- 22 Southern Low Plains
- 30 Cross Timbers
- 40 Blacklands
- 51 North East
- 52 South East
- 60 Trans-Pecos
- 70 Edwards Plateau
- 81 South Central
- 82 Coastal Bend
- 90 Upper Coast
- 96 South
- 97 Lower Valley

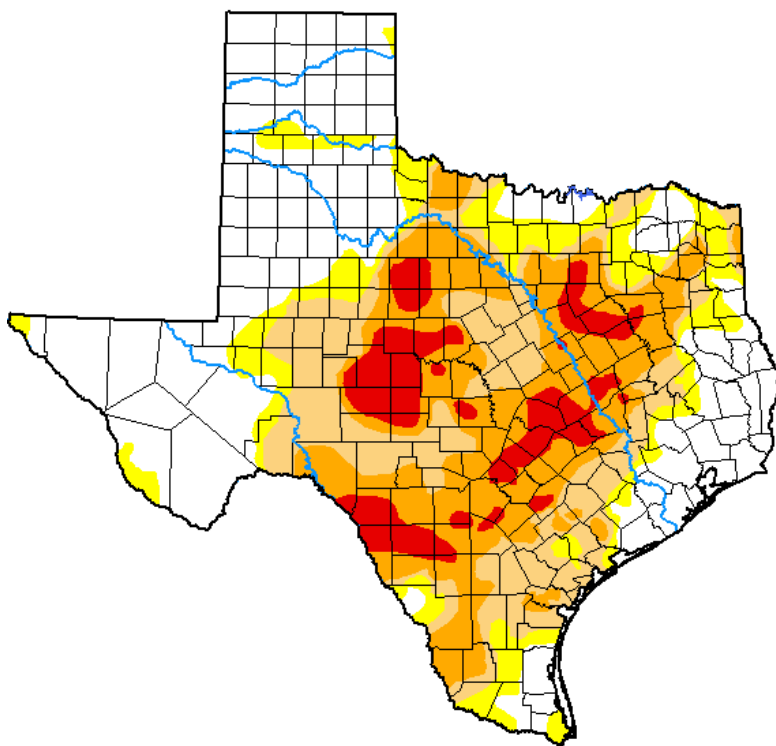


Seven Day Observed Regional Precipitation, October 13, 2019.



Source: National Weather Service, www.nws.noaa.gov.

Drought Monitor, Valid October 8, 2019.



Drought Conditions (Percent Area)

	None	D0-D4	D1-D4	D2-D4	D3-D4	D4
Current	39.05	60.95	48.52	29.91	8.60	0.00
Last Week <i>10-01-2019</i>	31.74	68.26	46.05	22.33	6.32	0.00
3 Months Ago <i>07-09-2019</i>	95.13	4.87	1.30	0.20	0.00	0.00
Start of Calendar Year <i>01-01-2019</i>	92.99	7.01	1.32	0.00	0.00	0.00
Start of Water Year <i>10-01-2019</i>	31.74	68.26	46.05	22.33	6.32	0.00
One Year Ago <i>10-09-2018</i>	69.42	30.58	11.67	3.04	0.59	0.00

Intensity:

- None
- D0 Abnormally Dry
- D1 Moderate Drought
- D2 Severe Drought
- D3 Extreme Drought
- D4 Exceptional Drought

The Drought Monitor focuses on broad-scale conditions. Local conditions may vary. See accompanying text summary for forecast statements.

Author:

Brian Fuchs
National Drought Mitigation Center



Source: National Drought Mitigation Center, a partnership with USDA, U.S. Department of Commerce/NOAA, <http://droughtmonitor.unl.edu>.