



Texas Crop Progress and Condition

Southern Plains Regional Field Office
Post Office Box 70 Austin, Texas 78767
(800) 626-3142 · FAX (855) 270-2725 · www.nass.usda.gov/tx

Issue: TX-CW3819

Weekly Summary for October 14 - 20

Released: October 21, 2019

Weather conditions were mostly warm and dry across the state last week. According to the US Drought Monitor, the area in extreme drought was spreading in South Texas and South Central Texas. Little to no precipitation was received in the Plains, the Trans-Pecos and South Texas, while the rest of the state received from traces amounts to 3 inches. Isolated areas in South East Texas received upwards of 6 inches of rainfall. There were 6.1 days suitable for fieldwork.

Small Grains: Small grain seeding was active in the Edwards plateau. However, the lack of moisture slowed wheat and oat seeding in the Plains and the Cross Timbers, while producers in the Blacklands were waiting for fields to dry up to start seeding. Field work to prepare for small grain seeding was underway in South Central Texas and in South Texas. Early planted wheat was emerging in the Northern High Plains.

Row Crops: Cotton harvest started in areas of the Plains. However, freezing conditions set back cotton progress in many areas, forcing some producers in the Northern Low Plains to plow or shred their cotton crop. Harvest continued in the Blacklands, South East Texas and the Edwards Plateau. Corn and sorghum harvest was active in the Northern High Plains. Harvest of peanuts continued in South Texas and the Southern High Plains.

Fruit, Vegetable and Specialty Crops: Pecans were starting to show some shuck split in the Southern High Plains, while harvest continued in the Cross Timbers. Cabbage and spinach progress continued in South Texas. Fall vegetable crops were being planted in North East Texas.

Livestock, Range and Pasture: Livestock condition remained mostly fair to good across the state. Producers in the Cross Timbers reported respiratory health problems in livestock due to temperature swings. Stock tanks levels were becoming a concern in the Cross Timbers, the Blacklands and the Edwards Plateau. Range and pasture condition continued mostly poor to fair across the state.

Crop Progress

Stage	Percent of Acreage			
	Current Week	Previous Week	Previous Year	5 Year Average
Corn				
Mature	96	91	94	95
Harvested	82	77	79	79
Cotton				
Bolls Opening	90	81	82	84
Harvested	32	27	34	29
Peanuts				
Mature	53	43	53	48
Harvested	26	15	20	29
Sorghum				
Harvested	93	89	82	78
Soybeans				
Dropping Leaves	91	85	92	92
Harvested	77	72	78	73
Sunflowers				
Harvested	76	73	72	73
Winter Wheat				
Planted	68	57	63	67
Emerging	43	40	44	44
Oats				
Planted	77	52	62	65
Emerging	34	(NA)	42	31

(NA) Not available.

Crop Condition

Crop	Percent of Acreage					Index ¹	
	Excellent	Good	Fair	Poor	Very Poor	2019	2018
Corn	11	41	38	9	1	74	54
Cotton	6	23	41	23	7	58	51
Peanuts	1	51	47	1	0	75	79
Sorghum	25	40	29	5	1	82	52
Wheat	11	25	45	15	4	66	64
Range and Pasture	2	16	31	35	16	--	--

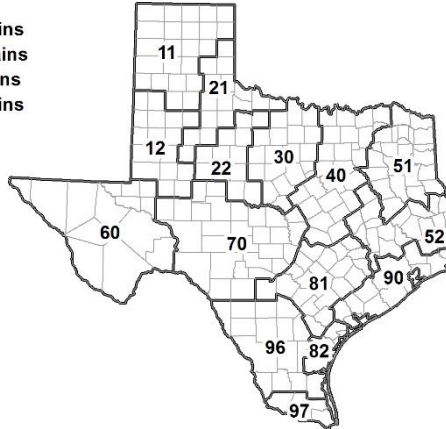
¹ The formula for the condition index is $I = (5V + 25P + 60F + 90G + 110E)/100$ where I = crop condition index and V, P, F, G, E = percentage of crop rated very poor, poor, fair, good, excellent.

Soil Moisture and Days Suitable by District

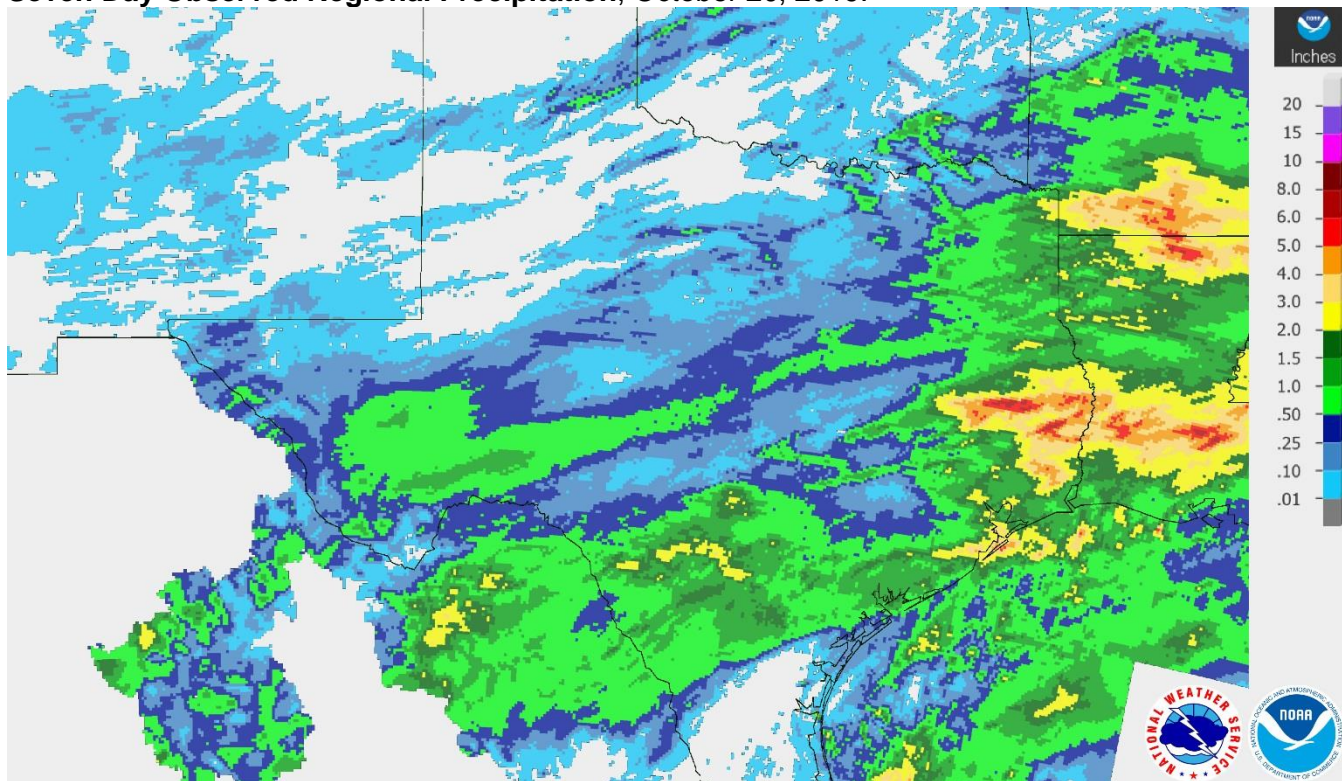
District	Topsoil Moisture Condition by District				Subsoil Moisture Condition by District				Days Suitable for Fieldwork
	Percentage of Acreage				Percentage of Acreage				
	Very Short	Short	Adequate	Surplus	Very Short	Short	Adequate	Surplus	
11	3	27	65	5	3	20	74	3	5.0
12	3	49	41	7	6	57	30	7	6.8
21	30	39	31	0	26	39	35	0	6.4
22	45	34	19	2	37	41	19	3	6.8
30	30	54	16	0	24	47	29	0	6.0
40	18	40	42	0	30	37	33	0	5.9
51	12	35	51	2	13	35	48	4	6.6
52	4	50	37	9	5	53	35	7	6.1
60	14	13	73	0	17	13	70	0	6.3
70	48	37	15	0	36	54	10	0	7.0
81	27	41	32	0	28	48	24	0	6.1
82	27	46	27	0	41	34	25	0	6.9
90	2	20	67	11	2	46	43	9	5.1
96	8	45	47	0	14	56	30	0	5.8
97	13	36	36	15	9	37	47	7	6.3
State	16	38	42	4	17	40	40	3	6.1

Texas Agricultural Districts

- 11 Northern High Plains
- 12 Southern High Plains
- 21 Northern Low Plains
- 22 Southern Low Plains
- 30 Cross Timbers
- 40 Blacklands
- 51 North East
- 52 South East
- 60 Trans-Pecos
- 70 Edwards Plateau
- 81 South Central
- 82 Coastal Bend
- 90 Upper Coast
- 96 South
- 97 Lower Valley

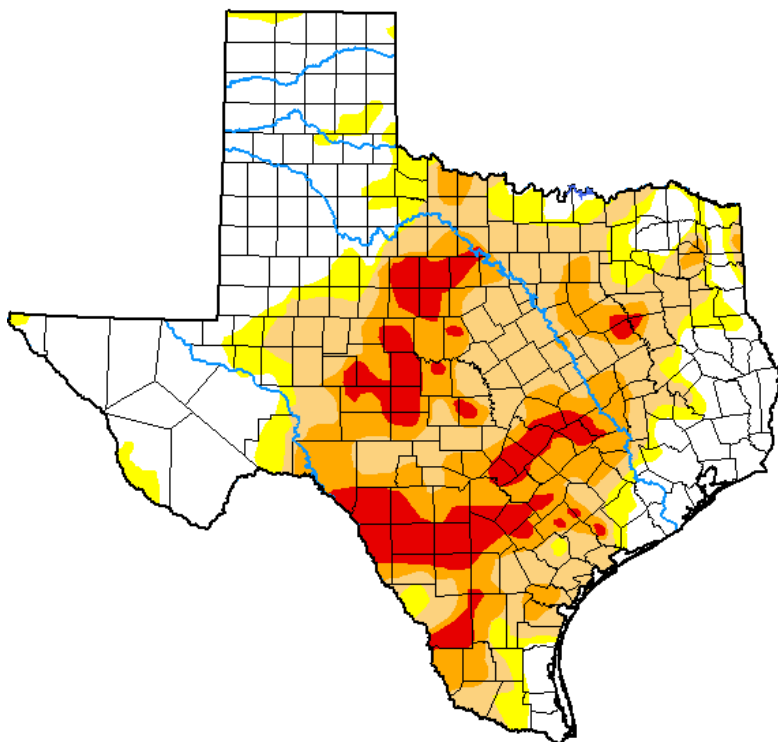


Seven Day Observed Regional Precipitation, October 20, 2019.



Source: National Weather Service, www.nws.noaa.gov.

Drought Monitor, Valid October 15, 2019.



Drought Conditions (Percent Area)

	None	D0-D4	D1-D4	D2-D4	D3-D4	D4
Current	38.24	61.76	50.39	26.33	9.37	0.00
Last Week 10-08-2019	39.05	60.95	48.52	29.91	8.60	0.00
3 Months Ago 07-16-2019	93.14	6.86	1.67	0.58	0.00	0.00
Start of Calendar Year 01-01-2019	92.99	7.01	1.32	0.00	0.00	0.00
Start of Water Year 10-01-2019	31.74	68.26	46.05	22.33	6.32	0.00
One Year Ago 10-16-2018	90.35	9.65	3.92	1.73	0.54	0.00

Intensity:

- None
- D0 Abnormally Dry
- D1 Moderate Drought
- D2 Severe Drought
- D3 Extreme Drought
- D4 Exceptional Drought

The Drought Monitor focuses on broad-scale conditions. Local conditions may vary. See accompanying text summary for forecast statements.

Author:

Richard Heim
NCEI/NOAA



Source: National Drought Mitigation Center, a partnership with USDA, U.S. Department of Commerce/NOAA, <http://droughtmonitor.unl.edu>.

Texas Crop Progress and Condition (21 October 2019)

USDA, National Agricultural Statistics Service, Southern Plains Regional Field Office