



# Texas Crop Progress and Condition

Southern Plains Regional Field Office  
Post Office Box 70 Austin, Texas 78767  
(800) 626-3142 · FAX (855) 270-2725 · [www.nass.usda.gov/tx](http://www.nass.usda.gov/tx)

**Issue: TX-CW3919**

**Weekly Summary for October 21-October 27**

**Released: October 28, 2019**

Weather conditions were mostly cool and dry across Texas last week. Freezing temperatures, however, were registered in areas of the High Plains. Precipitation in the central and eastern parts of the state ranged from 0.5 and 2 inches, with isolated areas in South Central Texas getting upwards of 5 inches. There were 5.5 days suitable for fieldwork.

**Small Grains:** Small grain seeding was active in the Blacklands, North East Texas, South Central Texas and South Texas, but snow halted seeding in the Northern High Plains. Meanwhile, most farmers in the Southern Low Plains and the Cross Timbers were waiting on more moisture to continue seeding activities.

**Row Crops:** Cotton harvest was underway in the Trans-Pecos and wrapping up in the Blacklands. Many producers in the Plains and the Cross Timbers were waiting on harvest for cotton to recover from the last freeze. Some farmers in the Southern High Plains and the Northern Low Plains were able to begin harvest. Corn and sorghum harvest continued in the Northern High Plains. Ratoon crop rice was being harvested in the Upper Coast, while peanut harvest continued in South Texas.

**Fruit, Vegetable and Specialty Crops:** Cabbage, onion and spinach development continued in South Texas. Pecan harvest was active in the Cross Timbers, the Trans-Pecos, the Edwards Plateau and South Texas.

**Livestock, Range and Pasture:** Livestock condition remained mostly fair to good across the state. Several wildfires were reported in the Edwards Plateau and fire danger remained high in other parts of the district. Range and pasture condition continued mostly poor to fair across the state.

### Crop Progress

Stage	Percent of Acreage			
	Current Week	Previous Week	Previous Year	5 Year Average
<b>Corn</b>				
Harvested	85	82	84	83
<b>Cotton</b>				
Bolls Opening	93	90	86	89
Harvested	36	32	36	34
<b>Peanuts</b>				
Mature	60	53	55	53
Harvested	33	26	33	43
<b>Sorghum</b>				
Harvested	96	93	83	80
<b>Soybeans</b>				
Dropping Leaves	95	91	94	94
Harvested	79	77	80	77
<b>Sunflowers</b>				
Harvested	80	76	73	76
<b>Winter Wheat</b>				
Planted	74	68	66	72
Emerged	51	43	54	54
<b>Oats</b>				
Planted	83	77	69	76
Emerged	60	34	49	40

### Crop Condition

Crop	Percent of Acreage					Index <sup>1</sup>	
	Excellent	Good	Fair	Poor	Very Poor	2019	2018
Corn	11	41	38	9	1	74	54
Cotton	4	24	45	20	7	58	49
Peanuts	0	48	51	1	0	74	79
Sorghum	25	40	29	5	1	82	52
Soybeans	1	30	48	16	5	61	64
Wheat	11	26	36	19	8	62	67
Range and Pasture	1	16	33	35	15	--	--

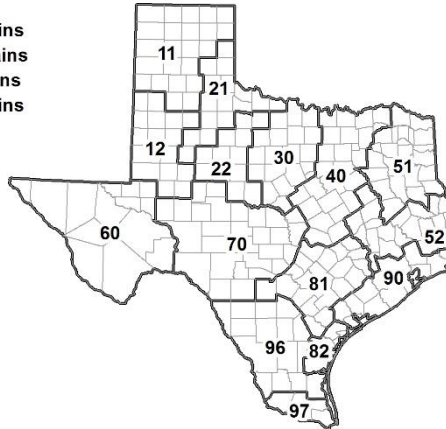
<sup>1</sup> The formula for the condition index is  $I = (5V + 25P + 60F + 90G + 110E)/100$  where I = crop condition index and V, P, F, G, E = percentage of crop rated very poor, poor, fair, good, excellent.

### Soil Moisture and Days Suitable by District

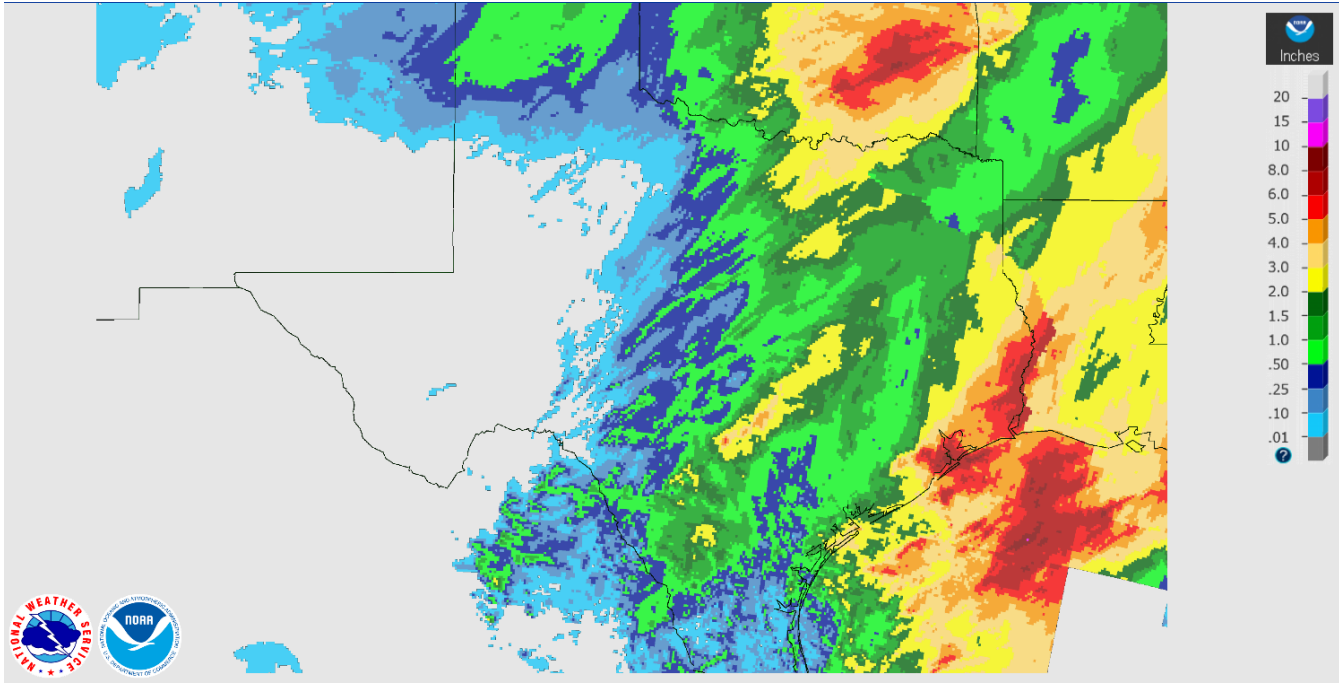
District	Topsoil Moisture Condition by District				Subsoil Moisture Condition by District				Days Suitable for Fieldwork
	Percentage of Acreage				Percentage of Acreage				
	Very Short	Short	Adequate	Surplus	Very Short	Short	Adequate	Surplus	
11	0	17	70	13	1	9	85	5	4.5
12	2	52	44	2	5	57	32	6	6.0
21	36	29	35	0	26	38	36	0	6.3
22	75	25	0	0	68	32	0	0	6.0
30	14	54	31	1	25	45	30	0	5.7
40	13	26	59	2	29	28	40	3	4.5
51	12	28	58	2	15	28	57	0	6.1
52	4	25	63	8	5	33	60	2	5.8
60	11	32	57	0	10	48	42	0	6.8
70	38	44	18	0	41	44	14	1	6.5
81	22	34	44	0	31	37	32	0	6.2
82	33	39	21	7	44	35	14	7	6.2
90	1	13	63	23	3	45	28	24	4.2
96	21	25	54	0	27	41	32	0	5.8
97	20	70	10	0	20	70	10	0	7.0
State	16	33	46	5	20	35	41	4	5.5

### Texas Agricultural Districts

- 11 Northern High Plains
- 12 Southern High Plains
- 21 Northern Low Plains
- 22 Southern Low Plains
- 30 Cross Timbers
- 40 Blacklands
- 51 North East
- 52 South East
- 60 Trans-Pecos
- 70 Edwards Plateau
- 81 South Central
- 82 Coastal Bend
- 90 Upper Coast
- 96 South
- 97 Lower Valley

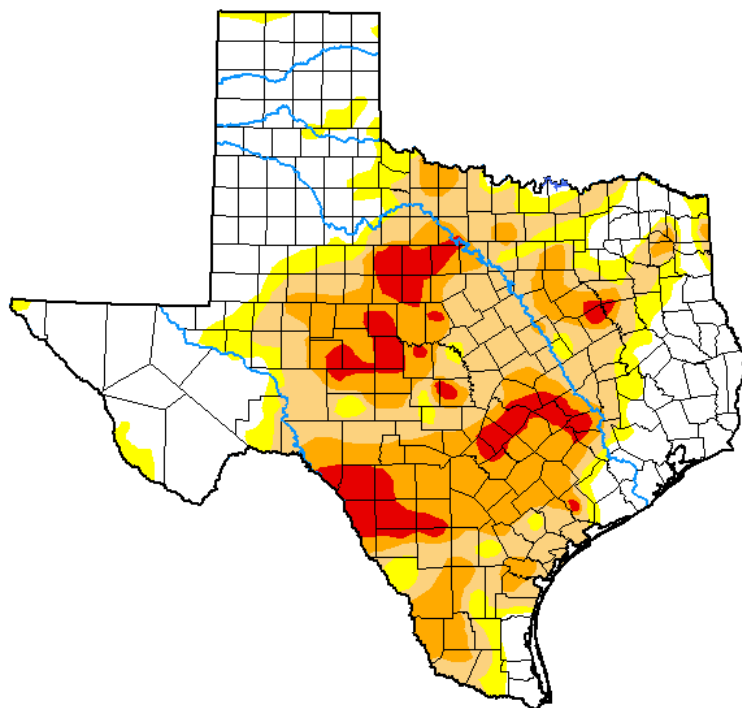


## Seven Day Observed Regional Precipitation, October 27, 2019.



Source: National Weather Service, [www.nws.noaa.gov](http://www.nws.noaa.gov)

## Drought Monitor, Valid October 22, 2019.



Drought Conditions (Percent Area)

	None	D0-D4	D1-D4	D2-D4	D3-D4	D4
<b>Current</b>	39.30	60.70	48.74	25.85	6.68	0.00
<b>Last Week</b> 10-15-2019	38.24	61.76	50.39	26.33	9.37	0.00
<b>3 Months Ago</b> 07-23-2019	89.88	10.12	1.99	0.66	0.00	0.00
<b>Start of Calendar Year</b> 01-01-2019	92.99	7.01	1.32	0.00	0.00	0.00
<b>Start of Water Year</b> 10-01-2019	31.74	68.26	46.05	22.33	6.32	0.00
<b>One Year Ago</b> 10-23-2018	93.19	6.81	3.62	1.72	0.42	0.00

**Intensity:**

- None
- D0 Abnormally Dry
- D1 Moderate Drought
- D2 Severe Drought
- D3 Extreme Drought
- D4 Exceptional Drought

The Drought Monitor focuses on broad-scale conditions. Local conditions may vary. See accompanying text summary for forecast statements.

**Author:**

Richard Heim  
NCEI/NOAA



[droughtmonitor.unl.edu](http://droughtmonitor.unl.edu)

Source: National Drought Mitigation Center, a partnership with USDA, U.S. Department of Commerce/NOAA, <http://droughtmonitor.unl.edu>

## Texas Crop Progress and Condition (28 October 2019)

USDA, National Agricultural Statistics Service, Southern Plains Regional Field Office