



Texas Crop Progress and Condition

Southern Plains Regional Field Office
Post Office Box 70 Austin, Texas 78767
(800) 626-3142 · FAX (855) 270-2725 · www.nass.usda.gov/tx

Issue: TX-CW0320

Weekly Summary for February 3-9

Released: February 10, 2020

Most of the state received from trace amounts to upwards of 2.0 inches of precipitation. Several areas of the Low Plains and the Cross Timbers received the largest amounts of rainfall. There were 4.8 days suitable for fieldwork.

Small Grains: Winter wheat in the High and Low Plains continued to develop but more rain was still needed in several areas. Small grains in the Cross Timbers and the Blacklands improved. Producers in North East Texas reported conditions favorable for development. Wheat and oats under irrigation in South Texas were in good condition.

Row Crops: Farmers prepared for corn and sorghum planting in the Blacklands. Some producers in the Upper Coast started planting corn while others considered preparation of rice seedlings. Meanwhile, producers in the Lower Valley pre-watered fields in preparation for planting corn, sorghum, sunflowers and cotton.

Fruit, Vegetable and Specialty Crops: Pecan harvest was completed in the Cross Timbers while Trans-Pecos pecan producers were harvesting late nuts while conducting seasonal orchard pruning. Spinach and cabbage harvest continued in South Texas, and potato planting continued.

Livestock, Range and Pasture: Livestock were rated in fair to good condition. The Blacklands were in need of more rain to fill stock tanks. Supplemental feeding continued across the state. Pasture and range condition was rated mostly fair to good, though pasture conditions varied greatly across the state. South Texas and the Lower Valley were observing increased drought conditions. East Texas reported feral hog damage in several areas.

Crop Progress

Stage	Percent of Acreage			
	Current Week	Previous Week	Previous Year	5 Year Average
Winter Wheat Headed	19	(NA)	1	(NA)
Oats Headed	7	1	1	(NA)

(NA) Not available.

Crop Condition

Crop	Percent of Acreage					Index ¹	
	Excellent	Good	Fair	Poor	Very Poor	2020	2019
Wheat	2	22	38	29	9	51	60
Oats	4	27	37	24	8	57	58
Range and Pasture	4	23	35	27	11	53	59

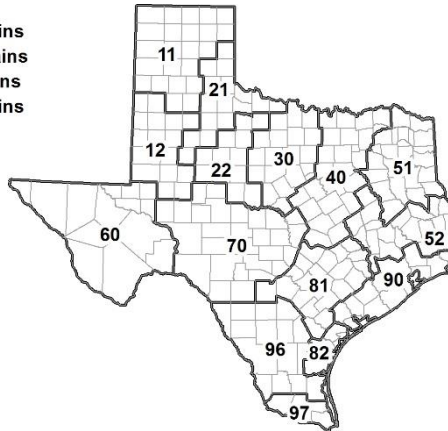
¹ The formula for the condition index is $I = (5V + 25P + 60F + 90G + 110E)/100$ where I = crop condition index and V, P, F, G, E = percentage of crop rated very poor, poor, fair, good, excellent.

Soil Moisture and Days Suitable by District

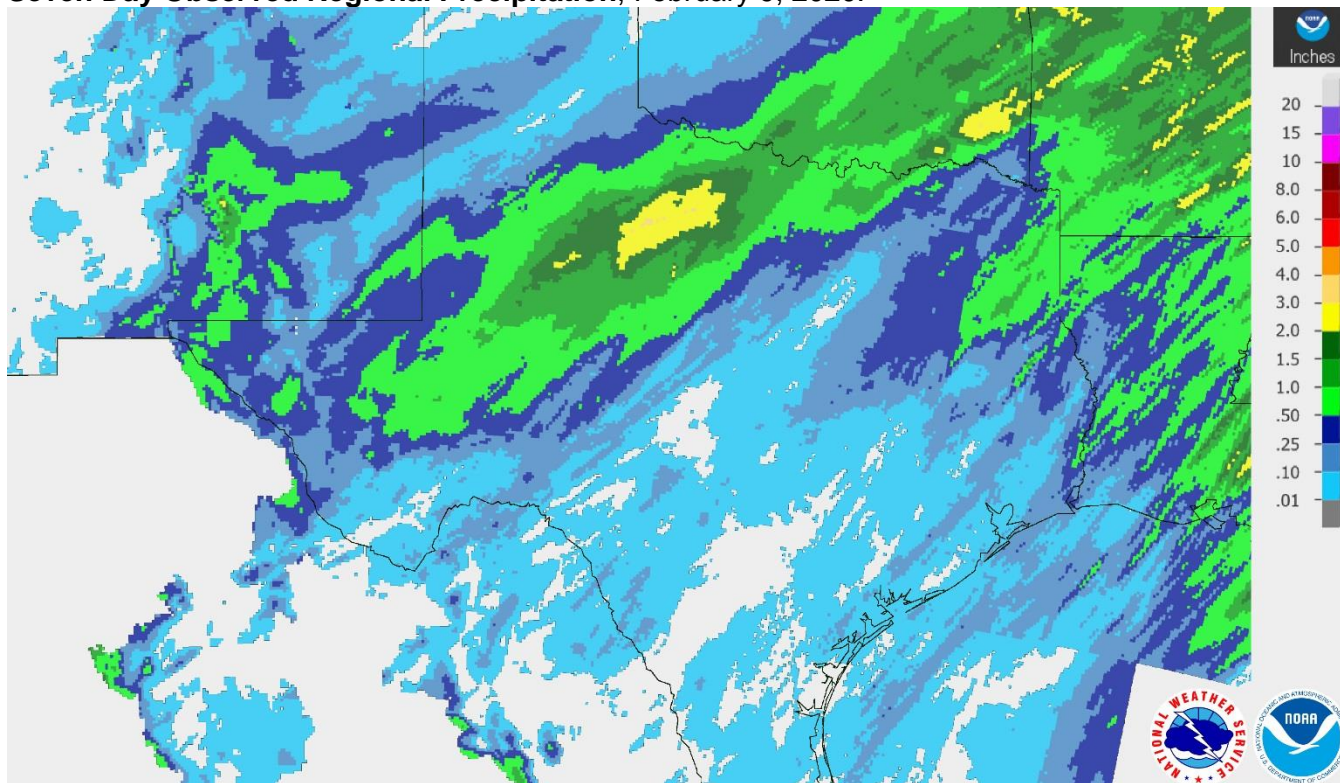
District	Topsoil Moisture Condition by District				Subsoil Moisture Condition by District				Days Suitable for Fieldwork
	Percentage of Acreage				Percentage of Acreage				
	Very Short	Short	Adequate	Surplus	Very Short	Short	Adequate	Surplus	
11	1	40	59	0	1	31	68	0	5.8
12	18	39	33	10	20	44	30	6	4.0
21	2	17	77	4	6	24	69	1	4.3
22	2	40	55	3	2	38	41	19	4.8
30	1	34	54	11	3	45	42	10	4.6
40	2	10	55	33	1	24	45	30	3.7
51	1	17	58	24	3	19	58	20	5.8
52	0	33	41	26	0	40	37	23	5.5
60	15	35	40	10	15	30	45	10	0.0
70	14	60	26	0	17	60	23	0	6.5
81	16	47	37	0	13	44	43	0	5.6
82	9	25	66	0	7	11	82	0	3.9
90	0	9	64	27	0	32	32	36	2.7
96	59	38	3	0	46	51	3	0	7.0
97	30	48	22	0	11	45	44	0	7.0
State	8	33	49	10	8	35	47	10	4.8

Texas Agricultural Districts

- 11 Northern High Plains
- 12 Southern High Plains
- 21 Northern Low Plains
- 22 Southern Low Plains
- 30 Cross Timbers
- 40 Blacklands
- 51 North East
- 52 South East
- 60 Trans-Pecos
- 70 Edwards Plateau
- 81 South Central
- 82 Coastal Bend
- 90 Upper Coast
- 96 South
- 97 Lower Valley

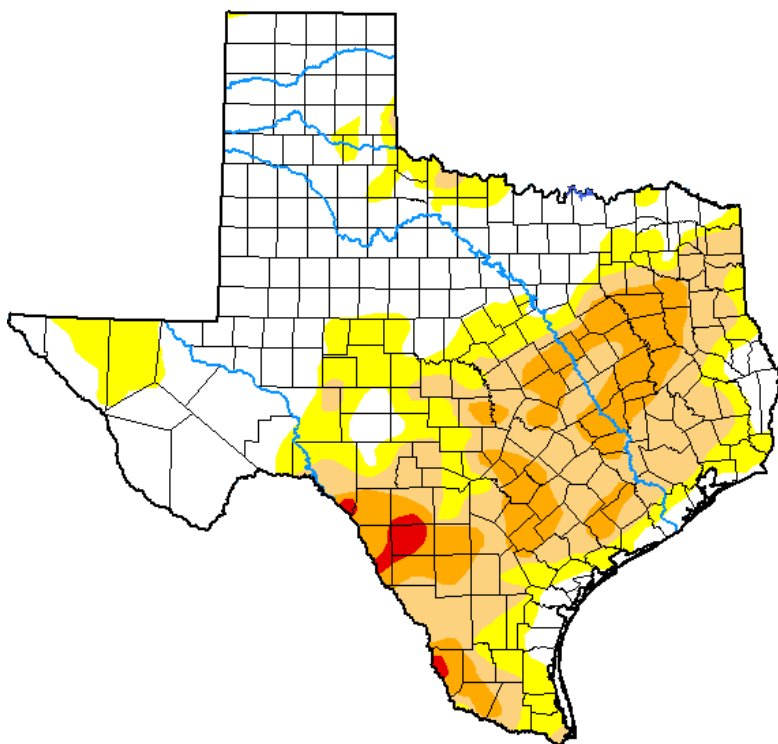


Seven Day Observed Regional Precipitation, February 9, 2020.



Source: National Weather Service, www.nws.noaa.gov

Drought Monitor, Valid February 4, 2020.



Drought Conditions (Percent Area)

	None	D0-D4	D1-D4	D2-D4	D3-D4	D4
Current	46.59	53.41	33.07	12.66	0.81	0.00
Last Week <i>01-28-2020</i>	44.00	56.00	34.09	11.92	0.57	0.00
3 Months Ago <i>11-05-2019</i>	42.29	57.71	40.96	19.22	6.00	0.00
Start of Calendar Year <i>12-31-2019</i>	44.69	55.31	36.12	9.19	0.74	0.00
Start of Water Year <i>10-01-2019</i>	31.74	68.26	46.05	22.33	6.32	0.00
One Year Ago <i>02-05-2019</i>	81.97	18.03	1.81	0.00	0.00	0.00

Intensity:

- None
- D0 Abnormally Dry
- D1 Moderate Drought
- D2 Severe Drought
- D3 Extreme Drought
- D4 Exceptional Drought

The Drought Monitor focuses on broad-scale conditions. Local conditions may vary. For more information on the Drought Monitor, go to <https://droughtmonitor.unl.edu/About.aspx>

Author:

Richard Tinker
CPC/NOAA/NWS/NCEP



Source: National Drought Mitigation Center, a partnership with USDA, U.S. Department of Commerce/NOAA, <http://droughtmonitor.unl.edu>