



# Texas Crop Progress and Condition

Southern Plains Regional Field Office  
Post Office Box 70 Austin, Texas 78767  
(800) 626-3142 · FAX (855) 270-2725 · [www.nass.usda.gov/tx](http://www.nass.usda.gov/tx)

**Issue: TX-CW0820 correction**

**Weekly Summary for March 9 - 15**

**Released: March 17, 2020**

Most of the state received from trace amounts to upwards of 1.0 inch of precipitation. Some areas in the Northern Low Plains, the Cross Timbers, the Blacklands and North East Texas received in excess of 2.0 inches with isolate reports up to 5.0 inches. There were 4.7 days suitable for fieldwork.

**Small Grains:** Small grains showed signs of improvement in areas of the High Plains, the Cross Timbers, the Blacklands, the Edwards Plateau and Northern Low Plains as weather conditions improved. Meanwhile, some areas of the Southern Low Plains had reported treating wheat crops for mites and Army worms.

**Row Crops:** Northern High Plains cotton producers were considering planting sorghum instead of cotton due to production costs. Meanwhile, cotton producers in the Southern Low Plains were pleased with the recent rains for upcoming plantings. Corn and sorghum planting continued in the Blacklands while row crop preparations began in the Trans-Pecos region. Cotton preparations continued in the Edwards Plateau while corn planting continued. Cotton continued to be planted and some had emerged in the Lower Valley. Dry conditions in some areas of South Texas delayed corn and sorghum plantings but planting progressed in other areas. Corn planting neared completion in areas of South Central Texas and the Upper Coast. Sorghum planting progressed in the South Central Texas. Meanwhile, cotton planting halted in some areas of the Coastal Bend due to inadequate moisture.

**Fruit, Vegetable and Specialty Crops:** North East Texas vegetable producers started some transplanting but delayed larger plantings due to excessive moisture. The potato crop in South Texas had emerged while spinach harvest continued. Onion harvest in the Lower Valley was expected to occur relatively soon based on crop progress. Pecan crops in the Trans-Pecos area were pruned while buds had formed in the Edwards Plateau.

**Livestock, Range and Pasture:** Livestock were rated in fair to good condition. Supplemental feeding continued across most of the state but slowed in areas of North East Texas. Pasture and range condition was rated mostly fair to good, though pasture conditions varied greatly across the state. Feral swine damage continued in areas of East Texas while hog sighting had increased in the Blacklands.

**Crop Progress (corrected)**

Stage	Percent of Acreage			
	Current Week	Previous Week	Previous Year	5 Year Average
Corn Planted	33	32	22	23
Sorghum Planted	29	28	17	16
Winter Wheat Headed	26	25	7	2
Oats Headed	18	13	12	3

**Crop Condition**

Crop	Percent of Acreage					Index <sup>1</sup>	
	Excellent	Good	Fair	Poor	Very Poor	2020	2019
Wheat	5	31	42	17	5	63	62
Oats	10	48	33	5	4	75	62
Range and Pasture	4	28	36	20	12	57	62

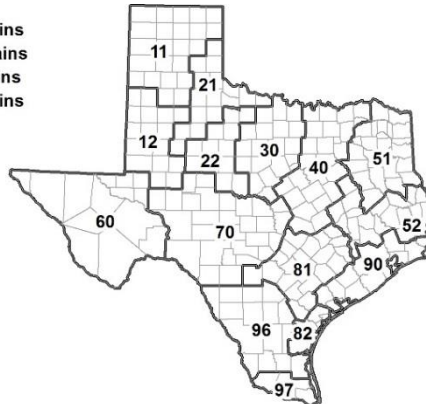
<sup>1</sup> The formula for the condition index is  $I = (5V + 25P + 60F + 90G + 110E)/100$  where I = crop condition index and V, P, F, G, E = percentage of crop rated very poor, poor, fair, good, excellent.

**Soil Moisture and Days Suitable by District**

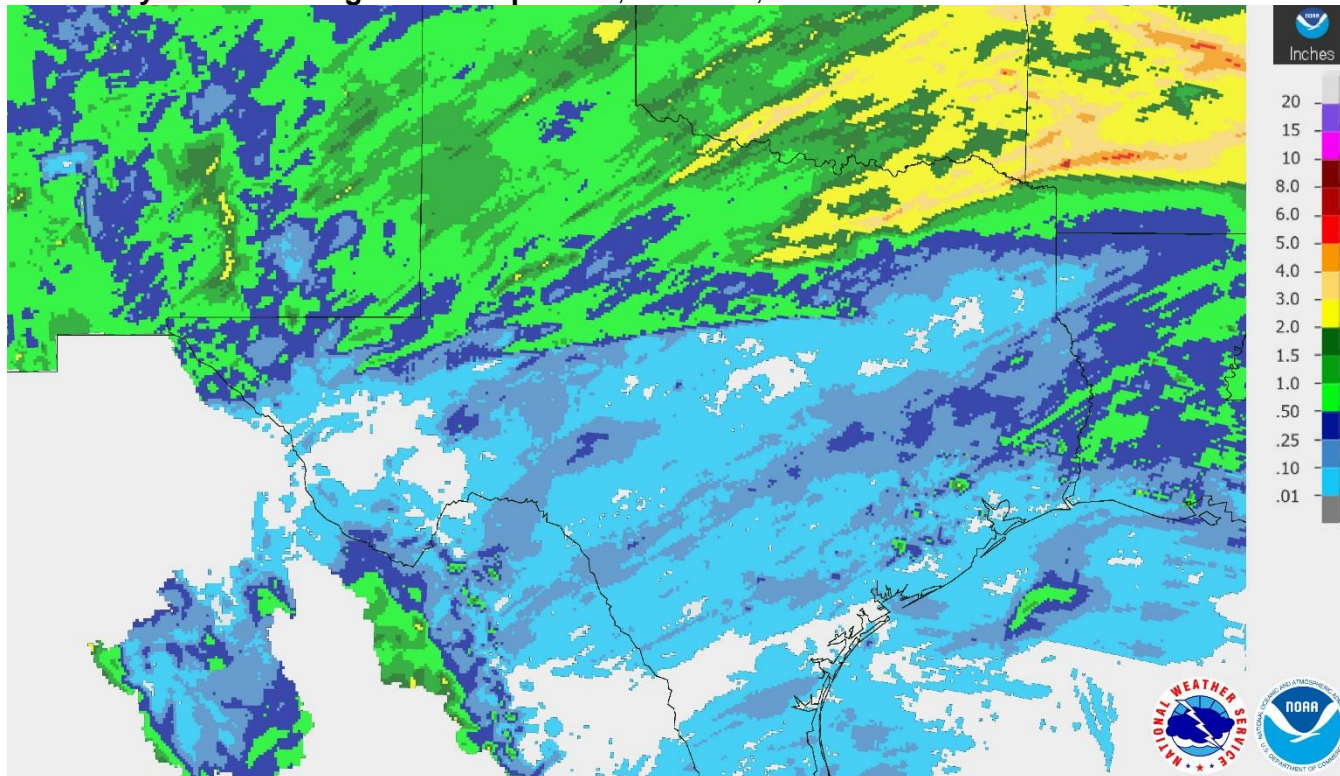
District	Topsoil Moisture Condition by District				Subsoil Moisture Condition by District				Days Suitable for Fieldwork
	Percentage of Acreage				Percentage of Acreage				
	Very Short	Short	Adequate	Surplus	Very Short	Short	Adequate	Surplus	
11	18	35	45	2	13	34	50	3	5.3
12	7	56	35	2	2	37	48	13	3.4
21	3	27	63	7	3	38	55	4	5.9
22	0	0	73	27	0	8	80	12	4.2
30	1	4	59	36	2	3	76	19	3.1
40	1	5	60	34	1	9	50	40	3.5
51	0	3	69	28	0	5	70	25	5.6
52	1	21	62	16	1	23	63	13	6.3
60	5	50	18	27	10	49	13	28	4.8
70	6	26	66	2	6	17	74	3	6.4
81	27	45	28	0	23	48	28	1	6.5
82	84	16	0	0	22	39	39	0	7.0
90	10	38	47	5	6	57	36	1	5.0
96	58	39	3	0	44	53	3	0	7.0
97	46	29	23	2	53	33	13	1	4.8
State	12	28	48	12	8	28	52	12	4.7

**Texas Agricultural Districts**

- 11 Northern High Plains
- 12 Southern High Plains
- 21 Northern Low Plains
- 22 Southern Low Plains
- 30 Cross Timbers
- 40 Blacklands
- 51 North East
- 52 South East
- 60 Trans-Pecos
- 70 Edwards Plateau
- 81 South Central
- 82 Coastal Bend
- 90 Upper Coast
- 96 South
- 97 Lower Valley

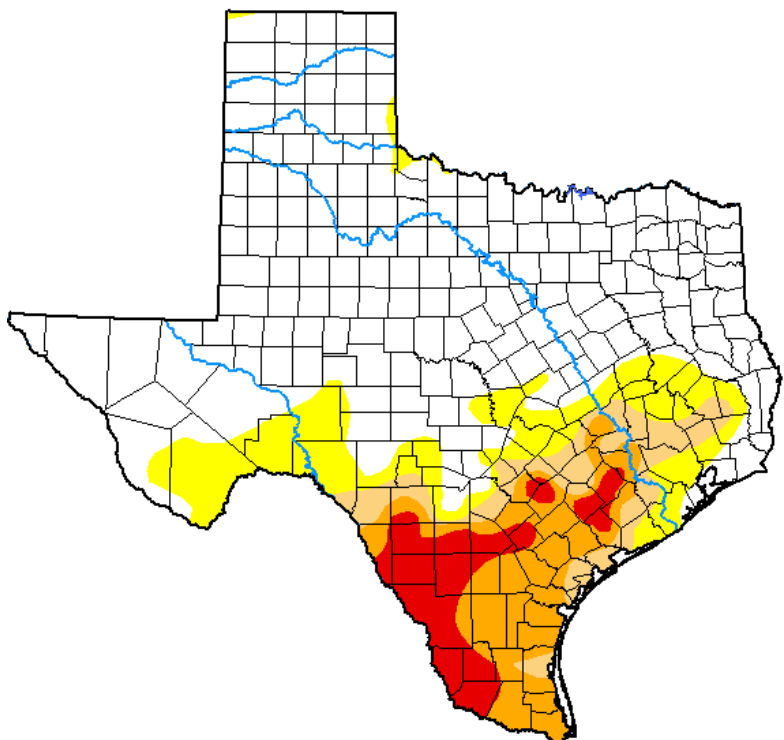


**Seven Day Observed Regional Precipitation, March 15, 2020.**



Source: National Weather Service, [www.nws.noaa.gov](http://www.nws.noaa.gov).

**Drought Monitor, Valid March 10, 2020.**



*Drought Conditions (Percent Area)*

	None	D0-D4	D1-D4	D2-D4	D3-D4	D4
<b>Current</b>	66.09	33.91	20.84	14.94	5.87	0.00
<b>Last Week</b> <i>03-03-2020</i>	65.58	34.42	21.16	13.93	5.87	0.00
<b>3 Months Ago</b> <i>12-10-2019</i>	45.58	54.42	34.88	8.06	0.67	0.00
<b>Start of Calendar Year</b> <i>12-31-2019</i>	44.69	55.31	36.12	9.19	0.74	0.00
<b>Start of Water Year</b> <i>10-01-2019</i>	31.74	68.26	46.05	22.33	6.32	0.00
<b>One Year Ago</b> <i>03-12-2019</i>	52.86	47.14	14.69	0.00	0.00	0.00

Intensity:

- None
- D0 Abnormally Dry
- D1 Moderate Drought
- D2 Severe Drought
- D3 Extreme Drought
- D4 Exceptional Drought

*The Drought Monitor focuses on broad-scale conditions. Local conditions may vary. For more information on the Drought Monitor, go to <https://droughtmonitor.unl.edu/About.aspx>*

Author:

Adam Hartman  
NOAA/NWS/NCEP/CPC



Source: National Drought Mitigation Center, a partnership with USDA, U.S. Department of Commerce/NOAA, <http://droughtmonitor.unl.edu>.