



Texas Crop Progress and Condition

Southern Plains Regional Field Office
Post Office Box 70 Austin, Texas 78767
(800) 626-3142 · FAX (855) 270-2725 · www.nass.usda.gov/tx

Issue: TX-CW1020

Weekly Summary for March 23-March 29

Released: March 30, 2020

Most of the state received from trace amounts to upwards of 2.0 inches of precipitation. Some areas in the Blacklands, North and South East Texas, the Edwards Plateau, and South Texas received in excess of 2.0 up to 6.0 inches. There were 4.7 days suitable for fieldwork.

Small Grains: Small grains continued to develop in most areas of the state due to increased moisture, however, cool weather slowed development in a few areas of the Cross Timbers and the Blacklands. Meanwhile, some areas of South Texas had reported premature heading as well as some failed fields due to dry conditions.

Row Crops: Producers applied pre-plant herbicides in the Southern High and Low Plains in preparation for cotton planting. Meanwhile, cotton planting plans were underway in some areas of the Northern High and Low Plains, and the Edwards Plateau. Corn had continued to emerge in areas of the Blacklands and some areas of the Edwards Plateau. Meanwhile, corn planting continued to progress in South Central Texas and the Coastal Bend. Corn and sorghum planting in the Upper Coast and South Texas had neared completion. Meanwhile, corn and sorghum fields in areas of the Lower Valley continued to be irrigated. Sorghum planting in the Edwards Plateau and South Central Texas had neared completion.

Fruit, Vegetable and Specialty Crops: Pecan trees budded in areas of the Cross Timbers while pruning neared completion and pre-irrigation had started in the Trans-Pecos region. Meanwhile, the peach crop in the Edwards Plateau had progressed. Onions continued to progress in South Texas while harvest continued in the Lower Valley. The potato crop in South Texas continued to develop while cabbage and spinach harvest continued.

Livestock, Range and Pasture: Livestock were rated in fair to good condition. Supplemental feeding continued across most of the state but slowed in areas of the Blacklands, the Cross Timbers, South Texas and the Edwards Plateau. Pasture and range condition was rated mostly fair to good. Livestock experienced a fly nuisance in areas of the Blacklands and North East Texas. Feral swine reports continued in areas of East Texas and the Blacklands.

Crop Progress

Stage	Percent of Acreage			
	Current Week	Previous Week	Previous Year	5 Year Average
Corn				
Planted	50	36	47	41
Emerged	24	(NA)	21	15
Cotton				
Planted	5	(NA)	6	5
Rice				
Planted	56	(NA)	16	25
Sorghum				
Planted	45	31	41	33
Winter Wheat				
Headed	28	27	6	9
Oats				
Headed	23	22	12	14

(NA) Not available.

Crop Condition

Crop	Percent of Acreage					Index ¹	
	Excellent	Good	Fair	Poor	Very Poor	2020	2019
Wheat	11	45	30	10	4	73	67
Oats	10	39	33	12	6	69	68
Range and Pasture	11	35	32	14	8	67	66

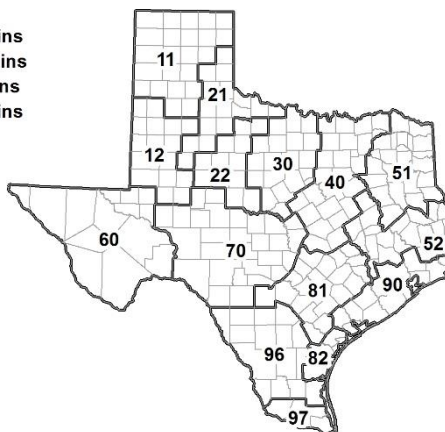
¹ The formula for the condition index is $I = (5V + 25P + 60F + 90G + 110E)/100$ where I = crop condition index and V, P, F, G, E = percentage of crop rated very poor, poor, fair, good, excellent.

Soil Moisture and Days Suitable by District

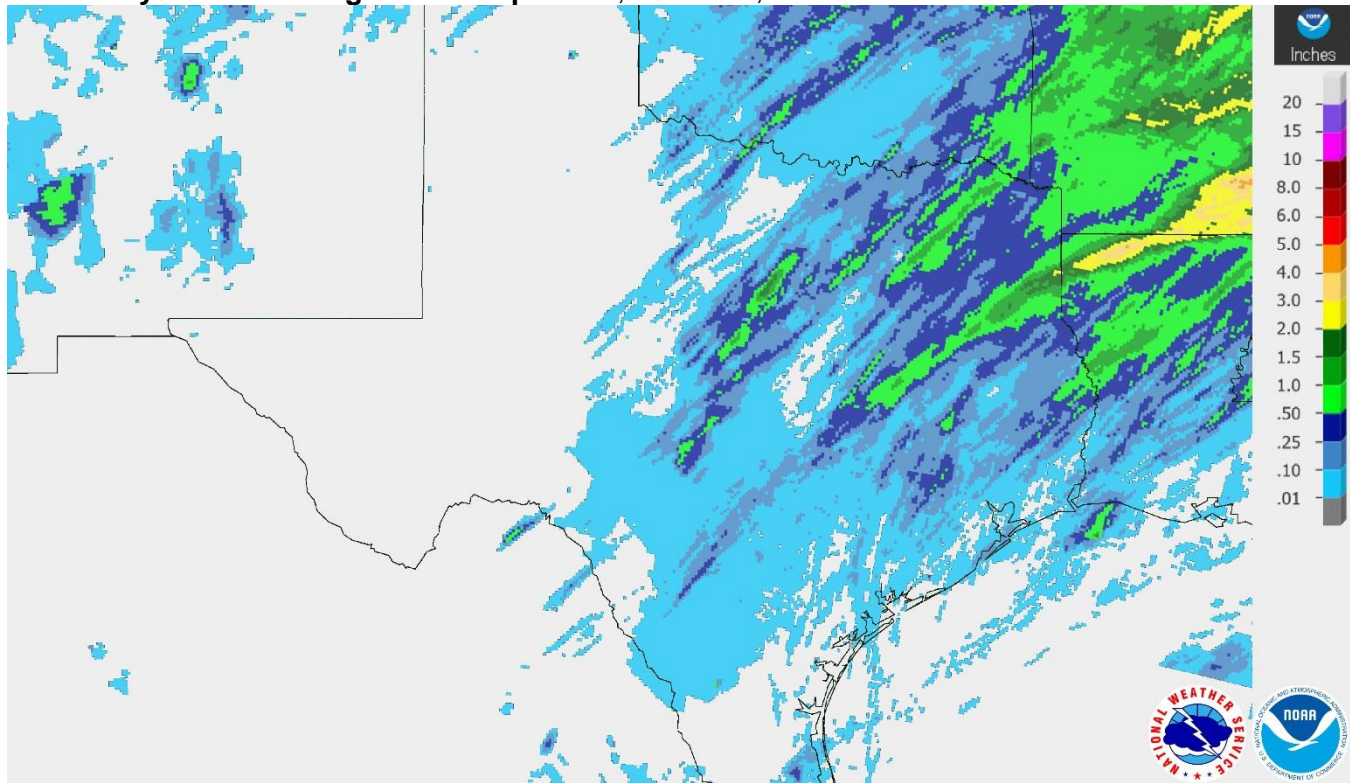
District	Topsoil Moisture Condition by District				Subsoil Moisture Condition by District				Days Suitable for Fieldwork
	Percentage of Acreage				Percentage of Acreage				
	Very Short	Short	Adequate	Surplus	Very Short	Short	Adequate	Surplus	
11	5	19	71	5	7	22	66	5	5.5
12	5	16	60	19	9	19	64	8	4.2
21	1	27	71	1	1	25	74	0	6.2
22	0	6	71	23	0	8	76	16	2.5
30	0	0	84	16	0	2	84	14	3.6
40	1	4	64	31	0	3	69	28	2.7
51	0	4	64	32	1	0	67	32	5.6
52	0	12	74	14	0	12	81	7	5.6
60	6	56	16	22	6	59	13	22	6.3
70	10	19	59	12	11	19	57	13	6.0
81	0	27	72	1	8	29	62	1	4.8
82	46	45	9	0	41	45	14	0	7.0
90	10	36	51	3	10	49	34	7	6.8
96	46	22	32	0	52	44	4	0	6.5
97	63	12	25	0	38	37	17	8	4.8
State	7	16	63	14	8	19	62	11	4.7

Texas Agricultural Districts

- 11 Northern High Plains
- 12 Southern High Plains
- 21 Northern Low Plains
- 22 Southern Low Plains
- 30 Cross Timbers
- 40 Blacklands
- 51 North East
- 52 South East
- 60 Trans-Pecos
- 70 Edwards Plateau
- 81 South Central
- 82 Coastal Bend
- 90 Upper Coast
- 96 South
- 97 Lower Valley

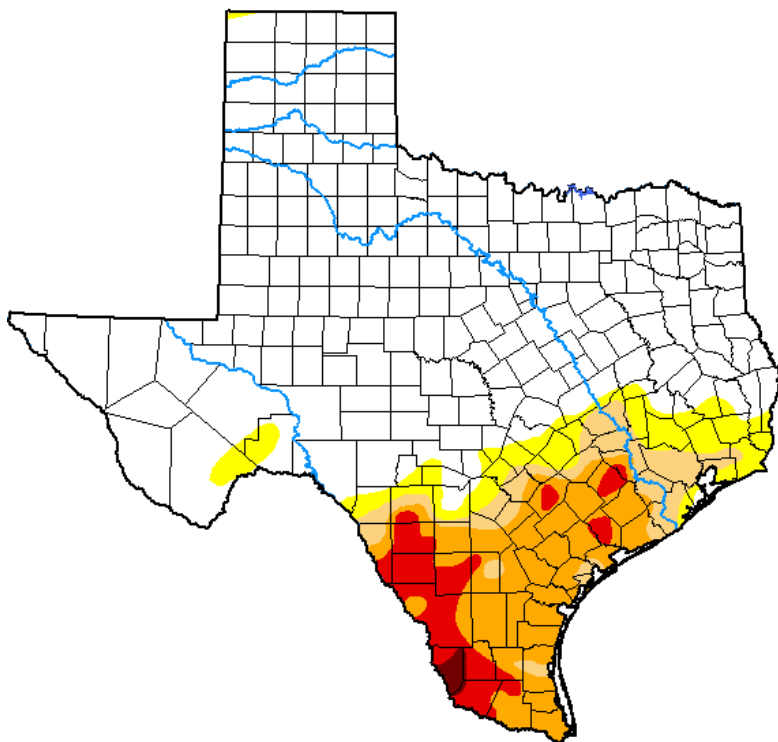


Seven Day Observed Regional Precipitation, March 29, 2020.



Source: National Weather Service, www.nws.noaa.gov.

Drought Monitor, Valid March 24, 2020.



Drought Conditions (Percent Area)

	None	D0-D4	D1-D4	D2-D4	D3-D4	D4
Current	73.64	26.36	19.78	14.89	4.44	0.35
Last Week 03-17-2020	69.38	30.62	22.05	15.97	6.96	0.29
3 Months Ago 12-24-2019	44.13	55.87	38.62	9.46	0.67	0.00
Start of Calendar Year 12-31-2019	44.69	55.31	36.12	9.19	0.74	0.00
Start of Water Year 10-01-2019	31.74	68.26	46.05	22.33	6.32	0.00
One Year Ago 03-26-2019	61.92	38.08	11.44	2.38	0.00	0.00

Intensity:

- None
- D0 Abnormally Dry
- D1 Moderate Drought
- D2 Severe Drought
- D3 Extreme Drought
- D4 Exceptional Drought

The Drought Monitor focuses on broad-scale conditions. Local conditions may vary. For more information on the Drought Monitor, go to <https://droughtmonitor.unl.edu/About.aspx>

Author:

Brad Rippey
U.S. Department of Agriculture



Source: National Drought Mitigation Center, a partnership with USDA, U.S. Department of Commerce/NOAA, <http://droughtmonitor.unl.edu>.

Texas Crop Progress and Condition (30 March 2020)

USDA, National Agricultural Statistics Service, Southern Plains Regional Field Office