



Texas Crop Progress and Condition

Southern Plains Regional Field Office
Post Office Box 70 Austin, Texas 78767
(800) 626-3142 · FAX (855) 270-2725 · www.nass.usda.gov/tx

Issue: TX-CW1420

Weekly Summary for April 20-April 26

Released: April 27, 2020

Most of the state received from trace amounts to upwards of 3.0 inches of precipitation. Isolated areas of North East Texas received up to 8.0 inches. There were 5.9 days suitable for fieldwork.

Small Grains: Small grains continued to mature in many areas of the state. Cattle grazing continued in fields that were not going to harvest in areas that had not reached maturity. Producers in the High and Low Plains and the Cross Timbers continued to assess possible damage to winter wheat fields caused by freezing temperatures.

Row Crops: Corn and sorghum planting was underway in the High and Low Plains. Corn and cotton planting continued in areas of the Blacklands while pima and upland cotton planting continued in the Trans-Pecos. Cotton planting neared completion in South Central Texas, the Upper Coast, and the Coastal Bend. Irrigated corn, cotton, and sorghum in South Texas made significant progress. Rice planting neared completion in the Upper Coast.

Fruit, Vegetable and Specialty Crops: Pecan trees were sprayed with zinc in the Southern High Plains and Trans-Pecos area. Onion harvest neared completion while sesame emerged in the Lower Valley. Vegetable and strawberry harvest continued in South Texas.

Livestock, Range and Pasture: Livestock were rated in fair to good condition. Supplemental feeding continued across most of the state but slowed in many areas. Pasture and range condition was rated mostly fair to good. Sheep producers in the Northern Low Plains began selling lambs. Feral swine controls were underway in areas of North East Texas but damage to cropland and pastures continued.

Crop Progress

Stage	Percent of Acreage			
	Current Week	Previous Week	Previous Year	5 Year Average
Corn				
Planted	67	64	63	62
Emerged	52	50	52	51
Cotton				
Planted	18	17	13	12
Peanuts				
Planted	7	(NA)	(NA)	2
Rice				
Planted	91	82	70	72
Emerged	86	71	50	62
Sorghum				
Planted	67	64	63	64
Soybeans				

Planted	32	15	26	28
Winter Wheat				
Headed	68	53	57	62
Oats				
Headed	72	55	77	75

(NA) Not available.

Crop Condition

Crop	Percent of Acreage					Index ¹	
	Excellent	Good	Fair	Poor	Very Poor	2020	2019
Corn	19	35	39	6	1	77	81
Rice	10	55	35	--	--	82	84
Wheat	13	44	30	12	1	75	77
Oats	17	46	27	6	4	78	69
Range and Pasture	13	41	30	11	5	72	75

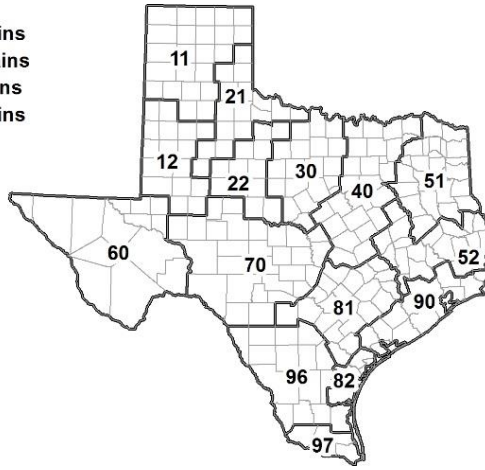
¹ The formula for the condition index is $I = (5V + 25P + 60F + 90G + 110E)/100$ where I = crop condition index and V, P, F, G, E = percentage of crop rated very poor, poor, fair, good, excellent.

Soil Moisture and Days Suitable by District

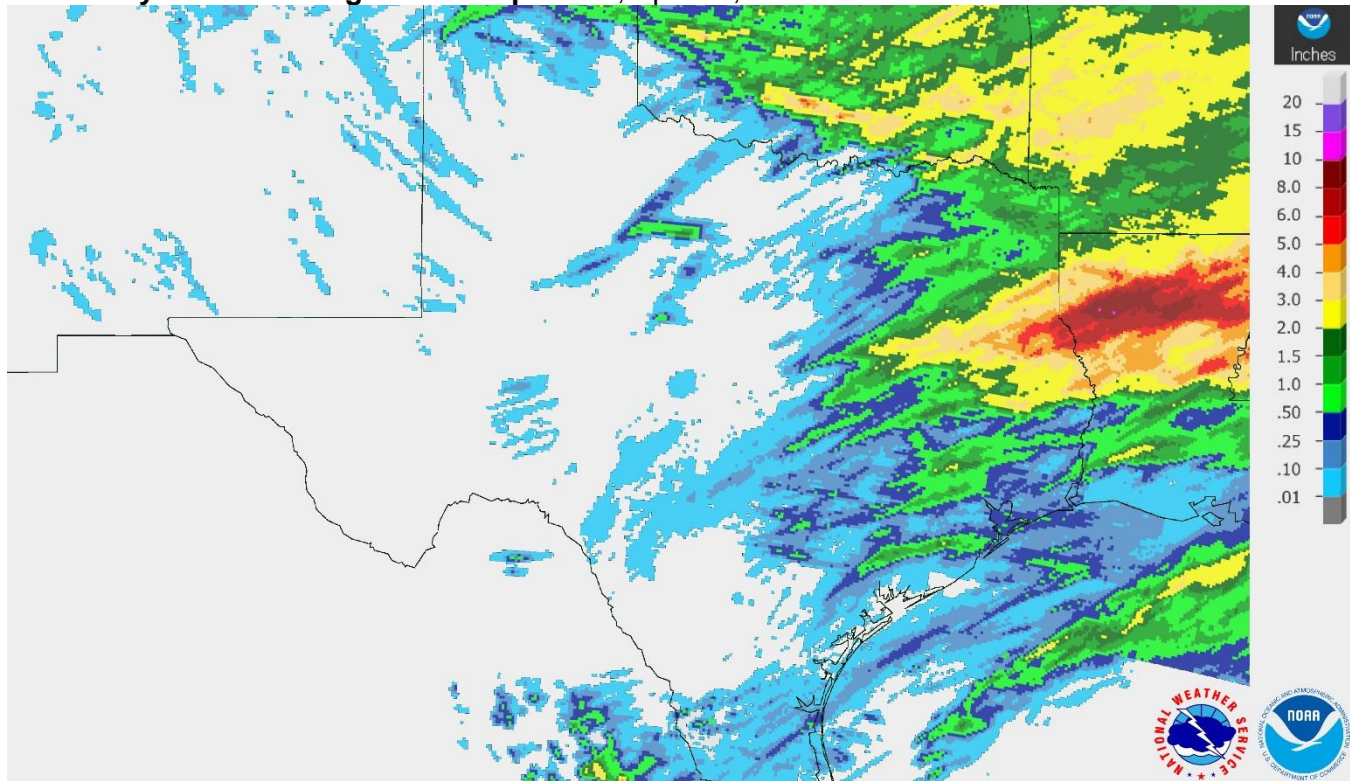
District	Topsoil Moisture Condition by District				Subsoil Moisture Condition by District				Days Suitable for Fieldwork
	Percentage of Acreage				Percentage of Acreage				
	Very Short	Short	Adequate	Surplus	Very Short	Short	Adequate	Surplus	
11	19	46	35	0	5	33	59	3	6.2
12	17	48	30	5	5	44	46	5	5.1
21	6	35	57	2	6	29	63	2	5.9
22	0	27	67	6	0	13	80	7	6.2
30	4	30	65	1	4	22	72	2	6.4
40	1	10	68	21	1	4	75	20	5.6
51	0	1	56	43	0	0	59	41	5.3
52	0	7	59	34	0	6	60	34	5.6
60	12	60	28	0	11	44	45	0	6.3
70	19	36	43	2	19	15	54	12	6.9
81	2	49	49	0	2	51	47	0	6.2
82	39	52	9	0	31	45	24	0	7.0
90	18	49	29	4	18	45	29	8	6.4
96	31	33	36	0	33	36	31	0	6.8
97	53	34	12	1	33	38	28	1	5.2
State	13	36	44	7	7	28	57	8	5.9

Texas Agricultural Districts

- 11 Northern High Plains
- 12 Southern High Plains
- 21 Northern Low Plains
- 22 Southern Low Plains
- 30 Cross Timbers
- 40 Blacklands
- 51 North East
- 52 South East
- 60 Trans-Pecos
- 70 Edwards Plateau
- 81 South Central
- 82 Coastal Bend
- 90 Upper Coast
- 96 South
- 97 Lower Valley

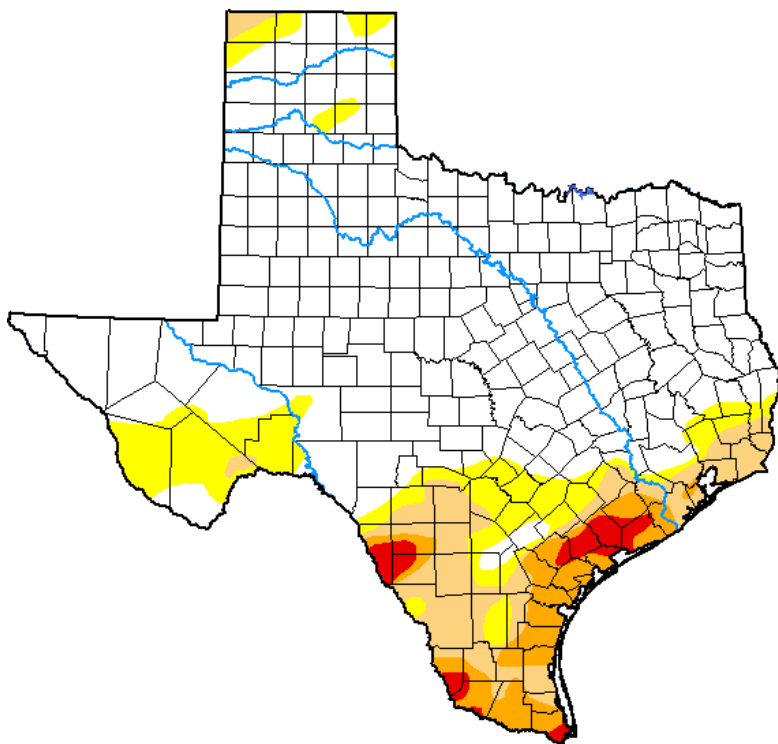


Seven Day Observed Regional Precipitation, April 26, 2020.



Source: National Weather Service, www.nws.noaa.gov.

Drought Monitor, Valid April 21, 2020.



Drought Conditions (Percent Area)

	None	D0-D4	D1-D4	D2-D4	D3-D4	D4
Current	72.28	27.72	16.05	7.16	1.92	0.00
Last Week <i>04-14-2020</i>	75.16	24.84	15.93	7.75	1.80	0.14
3 Months Ago <i>01-21-2020</i>	42.69	57.31	34.52	14.12	0.79	0.00
Start of Calendar Year <i>12-31-2019</i>	44.69	55.31	36.12	9.19	0.74	0.00
Start of Water Year <i>10-01-2019</i>	31.74	68.26	46.05	22.33	6.32	0.00
One Year Ago <i>04-23-2019</i>	79.75	20.25	1.29	0.00	0.00	0.00

Intensity:

- None
- D0 Abnormally Dry
- D1 Moderate Drought
- D2 Severe Drought
- D3 Extreme Drought
- D4 Exceptional Drought

The Drought Monitor focuses on broad-scale conditions. Local conditions may vary. For more information on the Drought Monitor, go to <https://droughtmonitor.unl.edu/About.aspx>

Author:

Brian Fuchs
National Drought Mitigation Center



Source: National Drought Mitigation Center, a partnership with USDA, U.S. Department of Commerce/NOAA, <http://droughtmonitor.unl.edu>.

Texas Crop Progress and Condition (27 April 2020)

USDA, National Agricultural Statistics Service, Southern Plains Regional Field Office