



## Texas Crop Progress and Condition

Southern Plains Regional Field Office  
Post Office Box 70 Austin, Texas 78767  
(800) 626-3142 · FAX (855) 270-2725 · [www.nass.usda.gov/tx](http://www.nass.usda.gov/tx)

**Issue: TX-CW1520**

**Weekly Summary for April 27-May 3**

**Released: May 4, 2020**

Most of the state received from trace amounts to upwards of 2.0 inches of precipitation. Isolated areas of South East Texas and the Upper Coast received up to 8.0 inches. There were 6.0 days suitable for fieldwork.

**Small Grains:** Some producers in the Plains continued to harvest wheat silage, while others cut and baled hay. Cattle grazed acreage that was not going to be harvested for grain. Small grain crops continued to progress in areas of the Edwards Plateau, South, and South Central Texas, with harvest anticipated very soon.

**Row Crops:** Corn and sorghum planting continued in the High and Low Plains. Excess moisture and hot temperatures in some areas of the Blacklands had slowed corn progress, while some producers began applying fertilizer. South East Texas corn and sorghum producers reported crop damage due to hail and high winds. Cotton had emerged in areas of the Trans-Pecos. Corn, cotton, and sorghum progressed in areas of the Coastal Bend, South, and South Central Texas but moisture was needed soon. Rice continued to progress in areas of the Upper Coast.

**Fruit, Vegetable and Specialty Crops:** In areas of South Texas, onion and cabbage crops continued to progress with harvest set to begin soon, meanwhile potato harvest continued. Peaches continued to progress and pecan orchards were being irrigated in the Trans-Pecos. Vegetable planting and harvesting continued in areas of North East Texas.

**Livestock, Range and Pasture:** Livestock were rated in fair to good condition. Supplemental feeding slowed in many areas. Pasture and range condition was rated mostly fair to good. Feral swine controls were underway in areas of the Blacklands, North East Texas, and South East Texas as property damage continued. Flies continued to stress livestock in areas of the Blacklands.

### Crop Progress

Stage	Percent of Acreage			
	Current Week	Previous Week	Previous Year	5 Year Average
Corn				
Planted	69	67	69	71
Emerged	56	52	59	57
Cotton				
Planted	21	18	15	15
Peanuts				
Planted	10	7	6	8
Rice				
Planted	93	91	78	77
Emerged	87	86	63	70
Sorghum				
Planted	69	67	69	70
Headed	10	(NA)	4	4
Soybeans				
Planted	42	32	37	45
Winter Wheat				
Headed	81	68	73	77
Oats				
Headed	94	72	88	87

(NA) Not available.

### Crop Condition

Crop	Percent of Acreage					Index <sup>1</sup>	
	Excellent	Good	Fair	Poor	Very Poor	2020	2019
Corn	14	28	48	8	2	72	81
Rice	11	50	39	0	0	81	---
Wheat	10	40	33	14	3	70	79
Oats	17	43	28	7	5	76	71
Range and Pasture	5	32	37	17	9	61	77

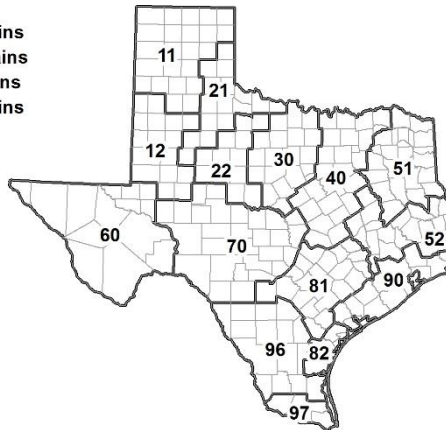
<sup>1</sup> The formula for the condition index is  $I = (5V + 25P + 60F + 90G + 110E)/100$  where I = crop condition index and V, P, F, G, E = percentage of crop rated very poor, poor, fair, good, excellent.

### Soil Moisture and Days Suitable by District

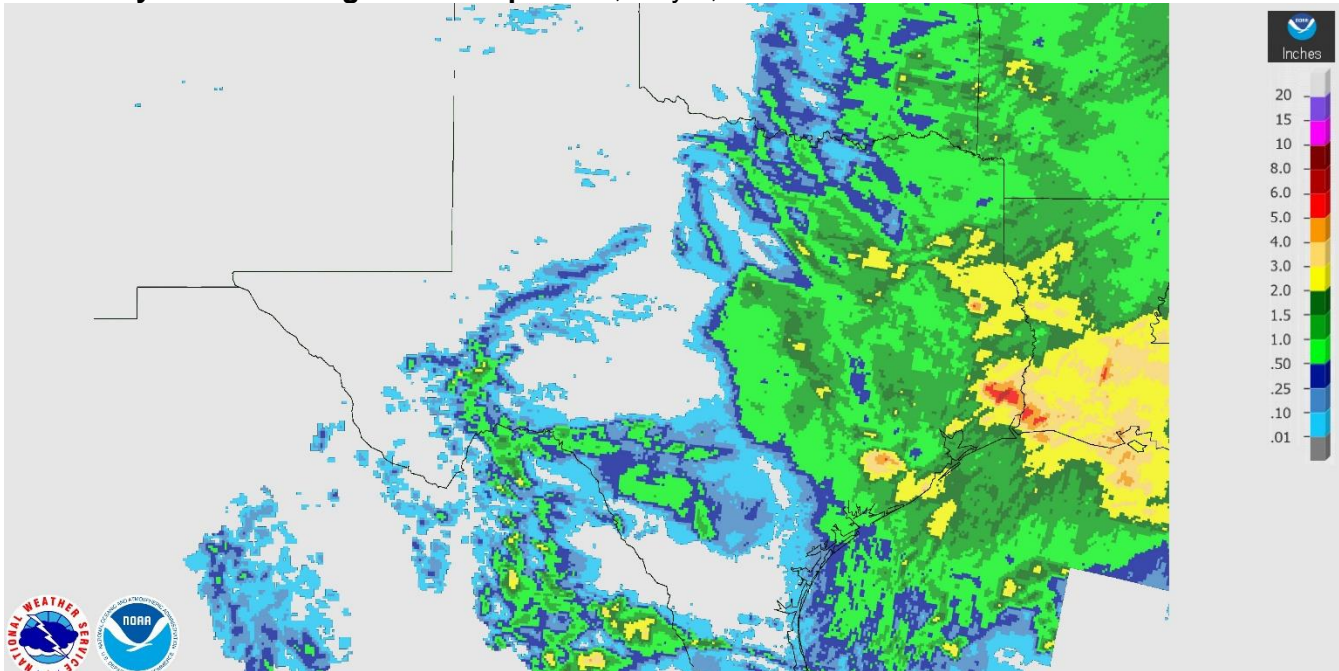
District	Topsoil Moisture Condition by District				Subsoil Moisture Condition by District				Days Suitable for Fieldwork
	Percentage of Acreage				Percentage of Acreage				
	Very Short	Short	Adequate	Surplus	Very Short	Short	Adequate	Surplus	
11	34	41	25	0	21	33	43	3	6.8
12	21	68	11	0	7	57	34	2	5.0
21	13	41	46	0	4	29	67	0	6.3
22	0	45	53	2	0	29	66	5	6.7
30	8	46	46	0	8	33	59	0	6.0
40	7	16	66	11	3	12	73	12	5.8
51	0	6	64	30	0	6	64	30	6.1
52	0	9	53	38	0	7	57	36	5.7
60	9	56	35	0	10	56	34	0	6.3
70	17	49	33	1	16	24	59	1	7.0
81	4	72	24	0	4	67	29	0	5.9
82	49	47	4	0	40	45	15	0	7.0
90	7	26	65	2	9	55	36	0	4.2
96	27	50	23	0	26	42	32	0	6.4
97	66	29	5	0	46	38	16	0	7.0
State	18	42	36	4	11	36	48	5	6.0

### Texas Agricultural Districts

- 11 Northern High Plains
- 12 Southern High Plains
- 21 Northern Low Plains
- 22 Southern Low Plains
- 30 Cross Timbers
- 40 Blacklands
- 51 North East
- 52 South East
- 60 Trans-Pecos
- 70 Edwards Plateau
- 81 South Central
- 82 Coastal Bend
- 90 Upper Coast
- 96 South
- 97 Lower Valley

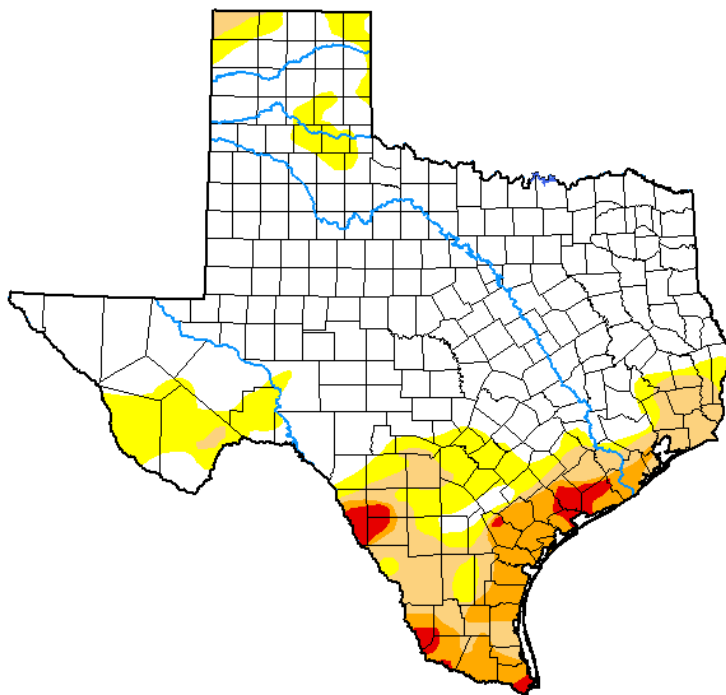


## Seven Day Observed Regional Precipitation, May 3, 2020.



Source: National Weather Service, [www.nws.noaa.gov](http://www.nws.noaa.gov).

## Drought Monitor, Valid April 28, 2020.



*Drought Conditions (Percent Area)*

	None	D0-D4	D1-D4	D2-D4	D3-D4	D4
<b>Current</b>	71.46	28.54	15.63	6.90	1.59	0.00
<b>Last Week</b> <i>04-21-2020</i>	72.28	27.72	16.05	7.16	1.92	0.00
<b>3 Months Ago</b> <i>01-28-2020</i>	44.00	56.00	34.09	11.92	0.57	0.00
<b>Start of Calendar Year</b> <i>12-31-2019</i>	44.69	55.31	36.12	9.19	0.74	0.00
<b>Start of Water Year</b> <i>10-01-2019</i>	31.74	68.26	46.05	22.33	6.32	0.00
<b>One Year Ago</b> <i>04-30-2019</i>	87.27	12.73	1.46	0.00	0.00	0.00

*Intensity:*

- None
- D0 Abnormally Dry
- D1 Moderate Drought
- D2 Severe Drought
- D3 Extreme Drought
- D4 Exceptional Drought

*The Drought Monitor focuses on broad-scale conditions. Local conditions may vary. For more information on the Drought Monitor, go to <https://droughtmonitor.unl.edu/About.aspx>*

*Author:*

Deborah Bathke  
National Drought Mitigation Center



Source: National Drought Mitigation Center, a partnership with USDA, U.S. Department of Commerce/NOAA, <http://droughtmonitor.unl.edu>.

## Texas Crop Progress and Condition (4 May 2020)

USDA, National Agricultural Statistics Service, Southern Plains Regional Field Office