



## Texas Crop Progress and Condition

Southern Plains Regional Field Office  
Post Office Box 70 Austin, Texas 78767  
(800) 626-3142 · FAX (855) 270-2725 · [www.nass.usda.gov/tx](http://www.nass.usda.gov/tx)

**Issue: TX-CW1620**

**Weekly Summary for May 4-May 10**

**Released: May 11, 2020**

Most of the state received from trace amounts to upwards of 2.0 inches of precipitation. Isolated areas of North East Texas, the Trans-Pecos, the Blacklands, the Southern Low Plains and the Upper Coast received up to 3.0 inches. There were 6.3 days suitable for fieldwork.

**Small Grains:** Small grain harvest started in some parts of the state while other areas planned to harvest in the upcoming weeks. Cattle grazing continued in fields that were not going to harvest. The Northern Low Plains experienced hail damage in some areas that had previously suffered freeze injury.

**Row Crops:** Corn and sorghum planting continued in the High and Low Plains. Hail damage to corn and cotton fields occurred in areas of the Cross Timbers. Cotton and corn progressed in most areas of the Blacklands while some producers began spraying insecticides for corn pests. Some corn producers in the Edwards Plateau reported water stress to their emerging crop while others were yet to plant. Early planted rice in South Central Texas experienced some crop flooding. Corn in some areas of the Upper Coast showed stress due to lack of moisture. Meanwhile, row crops continued to progress in South Texas while irrigated sunflowers had begun to emerge.

**Fruit, Vegetable and Specialty Crops:** Potato harvest continued in areas of South Texas while fruits and vegetables continued to progress. Onion and cabbage producers had begun planting in areas of the Edwards Plateau. Pecan crops progressed in many areas of Texas and spraying insecticides in some areas continued.

**Livestock, Range and Pasture:** Livestock were rated in fair to good condition. Supplemental feeding slowed in many areas. Pasture and range condition was rated mostly fair to good. Horn flies continued to stress livestock in areas of the Blacklands while many producers implemented control methods.

### Crop Progress

Stage	Percent of Acreage			
	Current Week	Previous Week	Previous Year	5 Year Average
<b>Corn</b>				
Planted	84	69	74	75
Emerged	70	56	63	64
Silked	6	(NA)	7	9
<b>Cotton</b>				
Planted	37	21	18	20
Squaring	1	(NA)	2	3
<b>Peanuts</b>				
Planted	15	10	11	19
<b>Rice</b>				
Planted	95	93	82	84
Emerged	90	87	72	77
<b>Sorghum</b>				
Planted	76	69	74	74
Headed	14	10	10	9
<b>Soybeans</b>				
Planted	55	42	52	59
<b>Winter Wheat</b>				
Headed	88	81	84	85
Harvested	2	(NA)	2	2
<b>Oats</b>				
Headed	97	94	94	95

(NA) Not available.

### Crop Condition

Crop	Percent of Acreage					Index <sup>1</sup>	
	Excellent	Good	Fair	Poor	Very Poor	2020	2019
Corn	13	36	41	7	3	73	83
Rice	15	52	33	0	0	83	74
Sorghum	5	28	47	7	13	61	82
Wheat	13	38	30	15	4	70	80
Oats	18	48	23	6	5	79	69
Range and Pasture	4	28	38	19	11	58	81

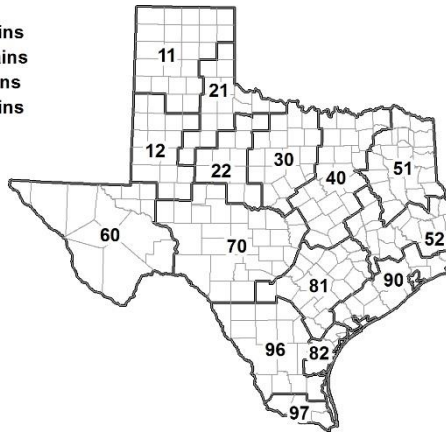
<sup>1</sup> The formula for the condition index is  $I = (5V + 25P + 60F + 90G + 110E)/100$  where I = crop condition index and V, P, F, G, E = percentage of crop rated very poor, poor, fair, good, excellent.

### Soil Moisture and Days Suitable by District

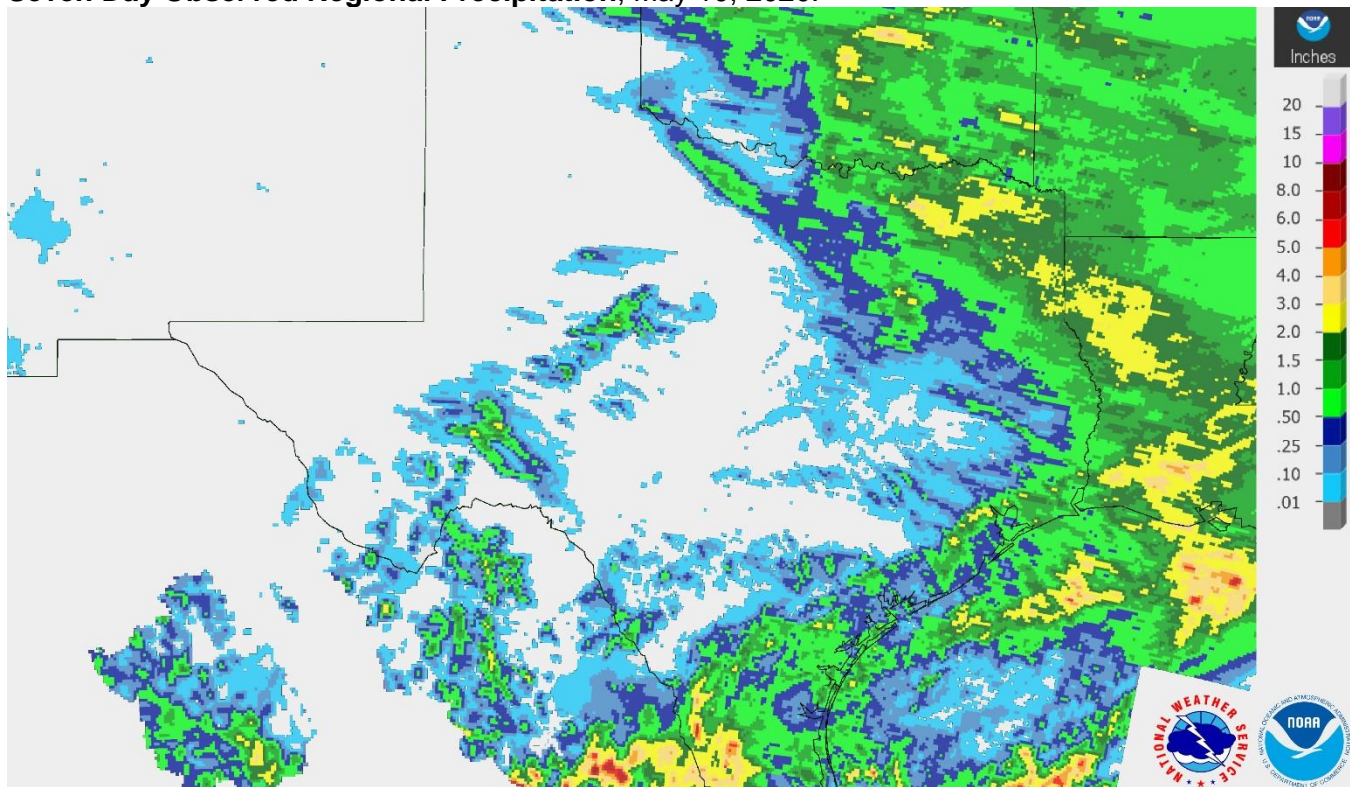
District	Topsoil Moisture Condition by District				Subsoil Moisture Condition by District				Days Suitable for Fieldwork
	Percentage of Acreage				Percentage of Acreage				
	Very Short	Short	Adequate	Surplus	Very Short	Short	Adequate	Surplus	
11	45	29	26	0	28	27	43	2	7.0
12	23	67	10	0	8	63	27	2	5.9
21	23	42	35	0	9	38	53	0	6.0
22	17	53	30	0	17	44	39	0	6.4
30	14	44	41	1	7	39	54	0	6.0
40	2	18	76	4	2	7	79	12	6.2
51	4	10	74	12	3	12	73	12	6.5
52	0	25	65	10	0	18	72	10	6.4
60	12	40	48	0	9	58	33	0	6.3
70	17	59	24	0	17	32	51	0	7.0
81	42	34	24	0	37	31	32	0	6.5
82	22	39	39	0	29	40	31	0	5.4
90	9	37	54	0	14	37	43	6	5.9
96	44	41	15	0	44	43	13	0	6.6
97	31	27	42	0	27	26	45	2	4.1
State	23	40	36	1	16	35	46	3	6.3

### Texas Agricultural Districts

- 11 Northern High Plains
- 12 Southern High Plains
- 21 Northern Low Plains
- 22 Southern Low Plains
- 30 Cross Timbers
- 40 Blacklands
- 51 North East
- 52 South East
- 60 Trans-Pecos
- 70 Edwards Plateau
- 81 South Central
- 82 Coastal Bend
- 90 Upper Coast
- 96 South
- 97 Lower Valley

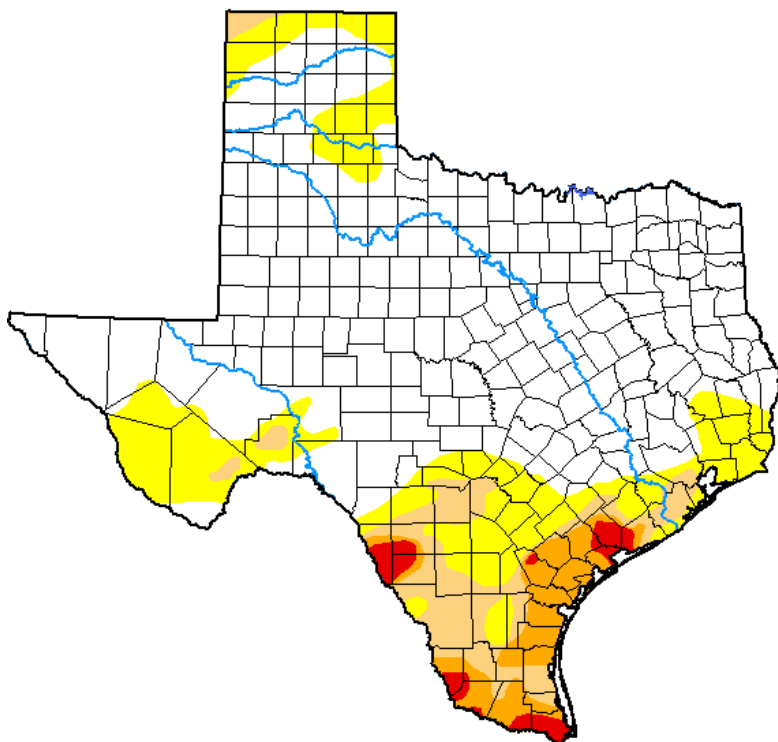


## Seven Day Observed Regional Precipitation, May 10, 2020.



Source: National Weather Service, [www.nws.noaa.gov](http://www.nws.noaa.gov).

## Drought Monitor, Valid May 5, 2020.



Drought Conditions (Percent Area)

	None	D0-D4	D1-D4	D2-D4	D3-D4	D4
<b>Current</b>	68.53	31.47	13.31	6.14	1.71	0.00
<b>Last Week</b> 04-28-2020	71.46	28.54	15.63	6.90	1.59	0.00
<b>3 Months Ago</b> 02-04-2020	46.59	53.41	33.07	12.66	0.81	0.00
<b>Start of Calendar Year</b> 12-31-2019	44.69	55.31	36.12	9.19	0.74	0.00
<b>Start of Water Year</b> 10-01-2019	31.74	68.26	46.05	22.33	6.32	0.00
<b>One Year Ago</b> 05-07-2019	96.95	3.05	0.00	0.00	0.00	0.00

Intensity:

- None
- D0 Abnormally Dry
- D1 Moderate Drought
- D2 Severe Drought
- D3 Extreme Drought
- D4 Exceptional Drought

The Drought Monitor focuses on broad-scale conditions. Local conditions may vary. For more information on the Drought Monitor, go to <https://droughtmonitor.unl.edu/About.aspx>

Author:

Brad Pugh  
CPC/NOAA



Source: National Drought Mitigation Center, a partnership with USDA, U.S. Department of Commerce/NOAA, <http://droughtmonitor.unl.edu>.

## Texas Crop Progress and Condition (11 May 2020)

USDA, National Agricultural Statistics Service, Southern Plains Regional Field Office