



Texas Crop Progress and Condition

Southern Plains Regional Field Office
Post Office Box 70 Austin, Texas 78767
(800) 626-3142 · FAX (855) 270-2725 · www.nass.usda.gov/tx

Issue: TX-CW1820

Weekly Summary for May 18-May 24

Released: May 26, 2020

Most of the state received from trace amounts to upwards of 3.0 inches of precipitation. Isolated areas of the Low Plains, the Cross Timbers, North East Texas and South Texas received up to 8.0 inches. There were 5.8 days suitable for fieldwork.

Small Grains: Small grain harvest progressed in some areas of the state, while producers waited for fields to mature in other areas. In the Northern High Plains, winter wheat had matured rapidly due to favorable weather conditions. Grazing of winter wheat continued in areas of the Edwards Plateau, the Northern Low Plains and the Blacklands. In the Northern Low Plains, harvest expectations were held in check by freeze damage in April followed by extreme heat and hail damage in areas last week.

Row Crops: Row crop planting continued across most areas of the state, although some producers in the Northern High Plains delayed planting dryland cotton. Hail and heavy rains damaged cotton in some areas of the Southern High Plains and the Edwards Plateau. Meanwhile, row crops throughout much of the state continued to progress with recent precipitation. Peanut planting was underway in areas of South Texas. Rice remained in flood stage in South Central Texas and the Upper Coast. Emerging sunflowers in areas of South Texas were stunted due to lack of moisture.

Fruit, Vegetable and Specialty Crops: Pecans continued to progress statewide. Producers in the Southern High Plains dealt with pests, while Lecanium scale was found in some Trans-Pecos orchards. Onions progressed in the Edwards Plateau while harvest neared completion in the Lower Valley. Melon crops continued to progress in the Southern High Plains and South Texas.

Livestock, Range and Pasture: Livestock were rated in fair to good condition. Supplemental feeding slowed in many areas. Pasture and range condition was rated mostly fair to good. Stock pond levels improved in many areas of the state but remained low in areas that did not receive adequate precipitation. Feral hog control continued in areas of North East Texas.

Crop Progress

Stage	Percent of Acreage			
	Current Week	Previous Week	Previous Year	5 Year Average
Corn				
Planted	94	93	93	87
Emerged	88	81	79	77
Silked	30	15	17	21
Cotton				
Planted	50	46	45	41
Squaring	11	8	7	7
Peanuts				
Planted	53	27	58	56
Rice				
Emerged	94	92	81	86
Sorghum				
Planted	85	80	80	80
Headed	35	20	26	26
Soybeans				
Planted	78	69	68	74
Emerged	50	35	53	60
Sunflowers				
Planted	20	16	(NA)	(NA)
Winter Wheat				
Harvested	27	8	10	12
Oats				
Harvested	36	14	18	25

(NA) Not available.

Crop Condition

Crop	Percent of Acreage					Index ¹	
	Excellent	Good	Fair	Poor	Very Poor	2020	2019
Corn	15	52	28	4	1	81	84
Cotton	2	26	67	5	0	67	---
Peanuts	4	61	22	8	5	75	---
Rice	12	53	35	0	0	82	79
Sorghum	7	42	35	10	6	69	87
Soybeans	8	47	40	3	2	76	78
Wheat	6	36	37	15	6	65	80
Oats	17	48	27	7	1	80	67
Range and Pasture	5	30	40	18	7	61	82

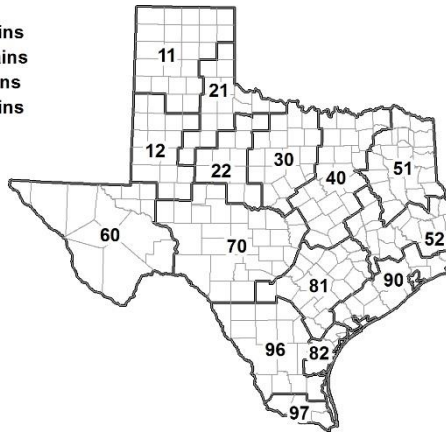
¹ The formula for the condition index is $I = (5V + 25P + 60F + 90G + 110E)/100$ where I = crop condition index and V, P, F, G, E = percentage of crop rated very poor, poor, fair, good, excellent.

Soil Moisture and Days Suitable by District

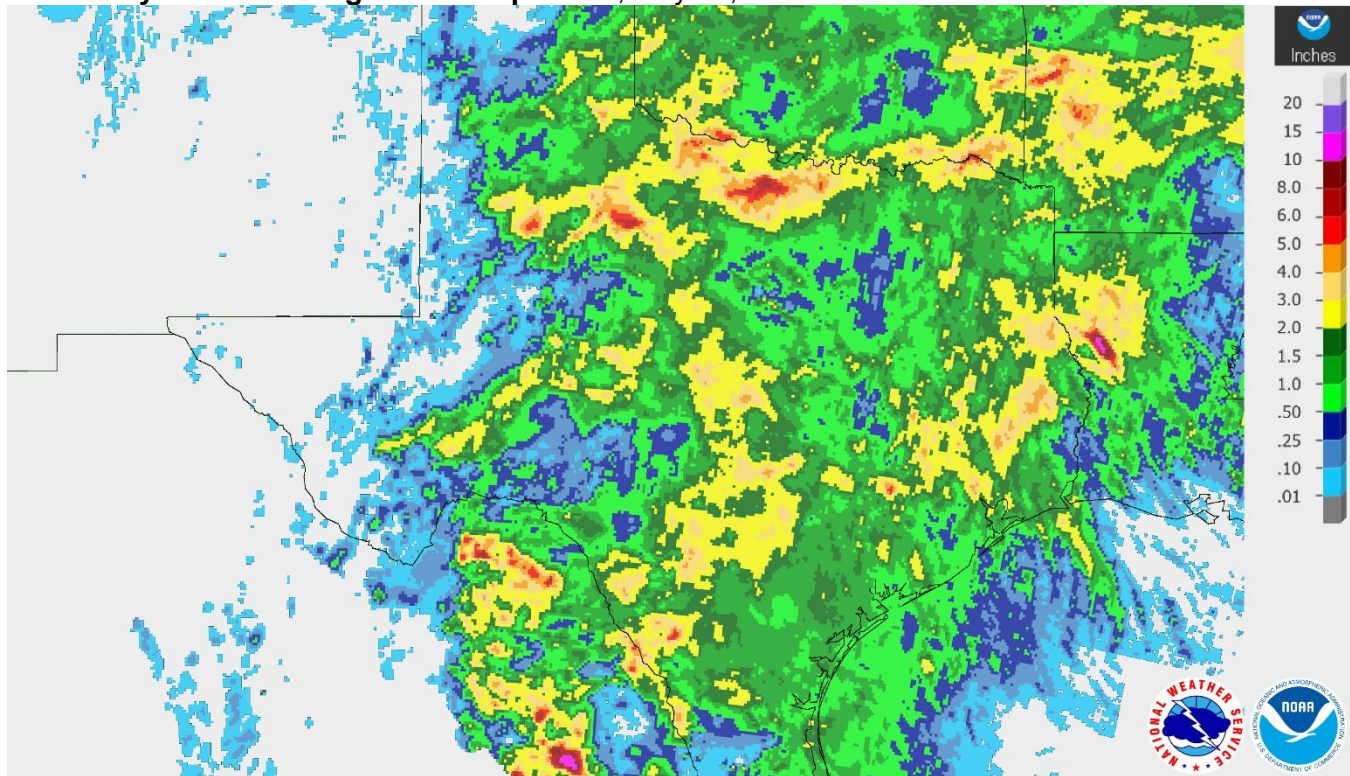
District	Topsoil Moisture Condition by District				Subsoil Moisture Condition by District				Days Suitable for Fieldwork
	Percentage of Acreage				Percentage of Acreage				
	Very Short	Short	Adequate	Surplus	Very Short	Short	Adequate	Surplus	
11	24	43	32	1	22	39	39	0	7.0
12	4	60	19	17	6	55	22	17	5.6
21	6	18	74	2	6	24	63	7	5.7
22	12	34	42	12	12	31	48	9	5.1
30	4	19	59	18	4	21	59	16	5.3
40	0	9	47	44	1	5	50	44	4.6
51	0	2	88	10	0	4	86	10	6.5
52	0	12	76	12	0	12	78	10	5.9
60	11	21	68	0	8	40	52	0	5.8
70	16	18	65	1	17	34	48	1	6.7
81	0	26	68	6	0	36	57	7	6.5
82	0	8	61	31	0	21	55	24	4.5
90	1	6	82	11	3	36	53	8	5.9
96	7	24	69	0	5	43	52	0	5.6
97	9	13	60	18	9	8	65	18	3.6
State	8	30	48	14	9	31	47	13	5.8

Texas Agricultural Districts

- 11 Northern High Plains
- 12 Southern High Plains
- 21 Northern Low Plains
- 22 Southern Low Plains
- 30 Cross Timbers
- 40 Blacklands
- 51 North East
- 52 South East
- 60 Trans-Pecos
- 70 Edwards Plateau
- 81 South Central
- 82 Coastal Bend
- 90 Upper Coast
- 96 South
- 97 Lower Valley

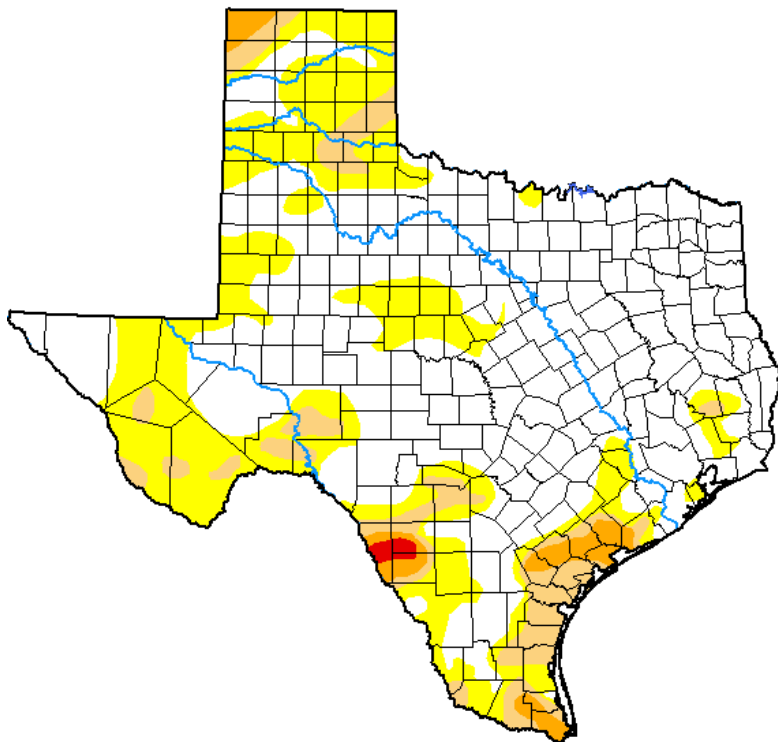


Seven Day Observed Regional Precipitation, May 25, 2020.



Source: National Weather Service, www.nws.noaa.gov.

Drought Monitor, Valid May 19, 2020.



Drought Conditions (Percent Area)

	None	D0-D4	D1-D4	D2-D4	D3-D4	D4
Current	62.26	37.74	10.73	2.87	0.34	0.00
Last Week <i>05-12-2020</i>	54.68	45.32	14.65	5.44	1.99	0.00
3 Months Ago <i>02-18-2020</i>	59.37	40.63	23.84	12.73	2.66	0.00
Start of Calendar Year <i>12-31-2019</i>	44.69	55.31	36.12	9.19	0.74	0.00
Start of Water Year <i>10-01-2019</i>	31.74	68.26	46.05	22.33	6.32	0.00
One Year Ago <i>05-21-2019</i>	97.90	2.10	0.00	0.00	0.00	0.00

Intensity:

- None
- D0 Abnormally Dry
- D1 Moderate Drought
- D2 Severe Drought
- D3 Extreme Drought
- D4 Exceptional Drought

The Drought Monitor focuses on broad-scale conditions. Local conditions may vary. For more information on the Drought Monitor, go to <https://droughtmonitor.unl.edu/About.aspx>

Author:

Brian Fuchs
National Drought Mitigation Center



Source: National Drought Mitigation Center, a partnership with USDA, U.S. Department of Commerce/NOAA, <http://droughtmonitor.unl.edu>.

Texas Crop Progress and Condition (26 May 2020)

USDA, National Agricultural Statistics Service, Southern Plains Regional Field Office